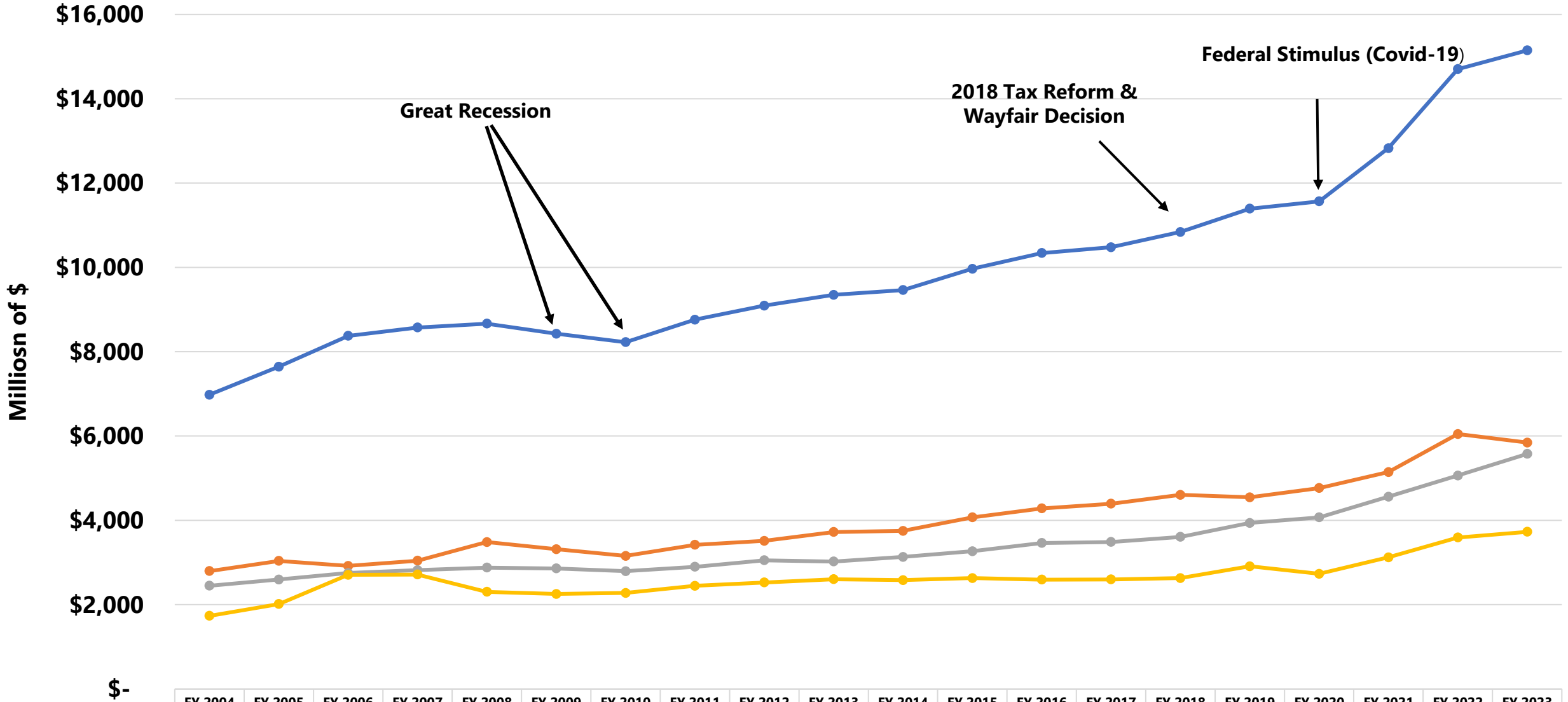


History and Trends in Revenue

Interim Joint Committee on Appropriations and Revenue

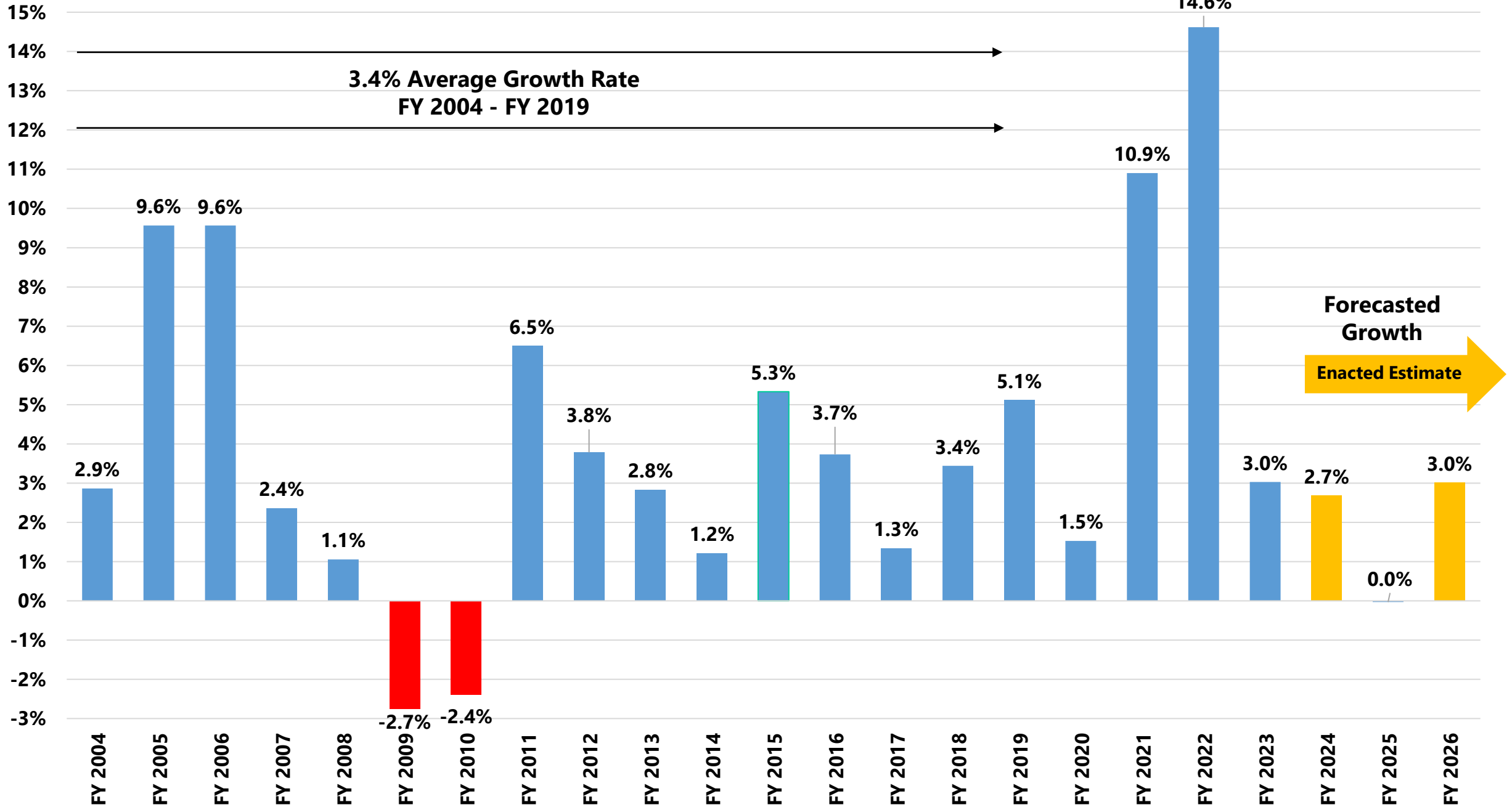
June 5, 2024

General Fund History, FY 2004 - FY 2023



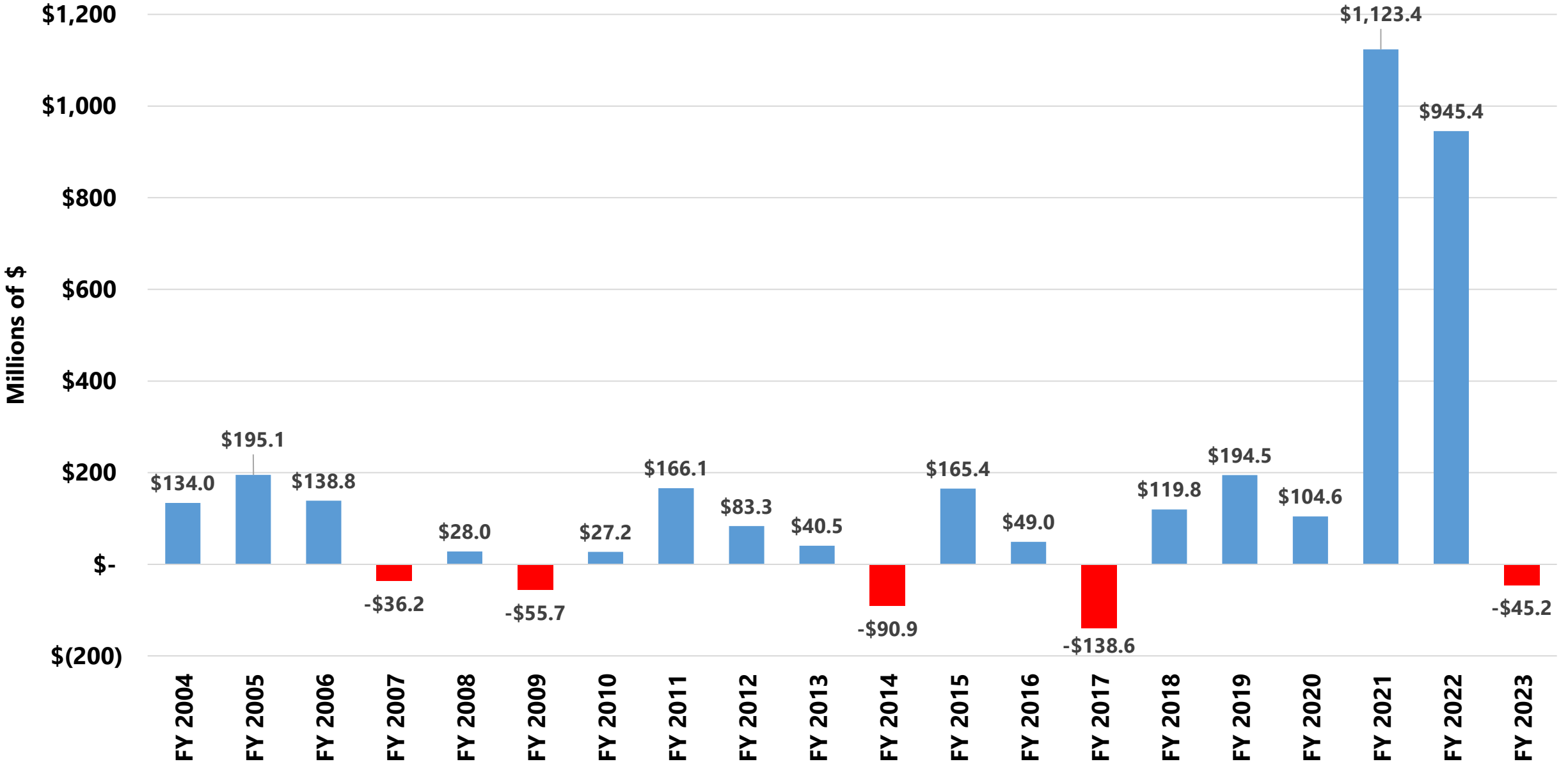
	FY 2004	FY 2005	FY 2006	FY 2007	FY 2008	FY 2009	FY 2010	FY 2011	FY 2012	FY 2013	FY 2014	FY 2015	FY 2016	FY 2017	FY 2018	FY 2019	FY 2020	FY 2021	FY 2022	FY 2023
Individual Income	\$2,796	\$3,036	\$2,919	\$3,042	\$3,483	\$3,315	\$3,154	\$3,418	\$3,512	\$3,723	\$3,749	\$4,070	\$4,282	\$4,394	\$4,604	\$4,545	\$4,765	\$5,144	\$6,048	\$5,844
Sales & Use	\$2,448	\$2,595	\$2,750	\$2,818	\$2,878	\$2,858	\$2,794	\$2,896	\$3,052	\$3,022	\$3,131	\$3,267	\$3,463	\$3,485	\$3,606	\$3,938	\$4,071	\$4,561	\$5,063	\$5,576
All Other	\$1,734	\$2,014	\$2,708	\$2,715	\$2,303	\$2,253	\$2,277	\$2,445	\$2,527	\$2,604	\$2,582	\$2,630	\$2,594	\$2,599	\$2,629	\$2,910	\$2,730	\$3,123	\$3,592	\$3,727
Total General Fund	\$6,978	\$7,645	\$8,376	\$8,574	\$8,664	\$8,426	\$8,225	\$8,759	\$9,091	\$9,348	\$9,462	\$9,967	\$10,339	\$10,478	\$10,838	\$11,393	\$11,567	\$12,827	\$14,702	\$15,148

General Fund Growth Rate, FY 2004 - FY 2026

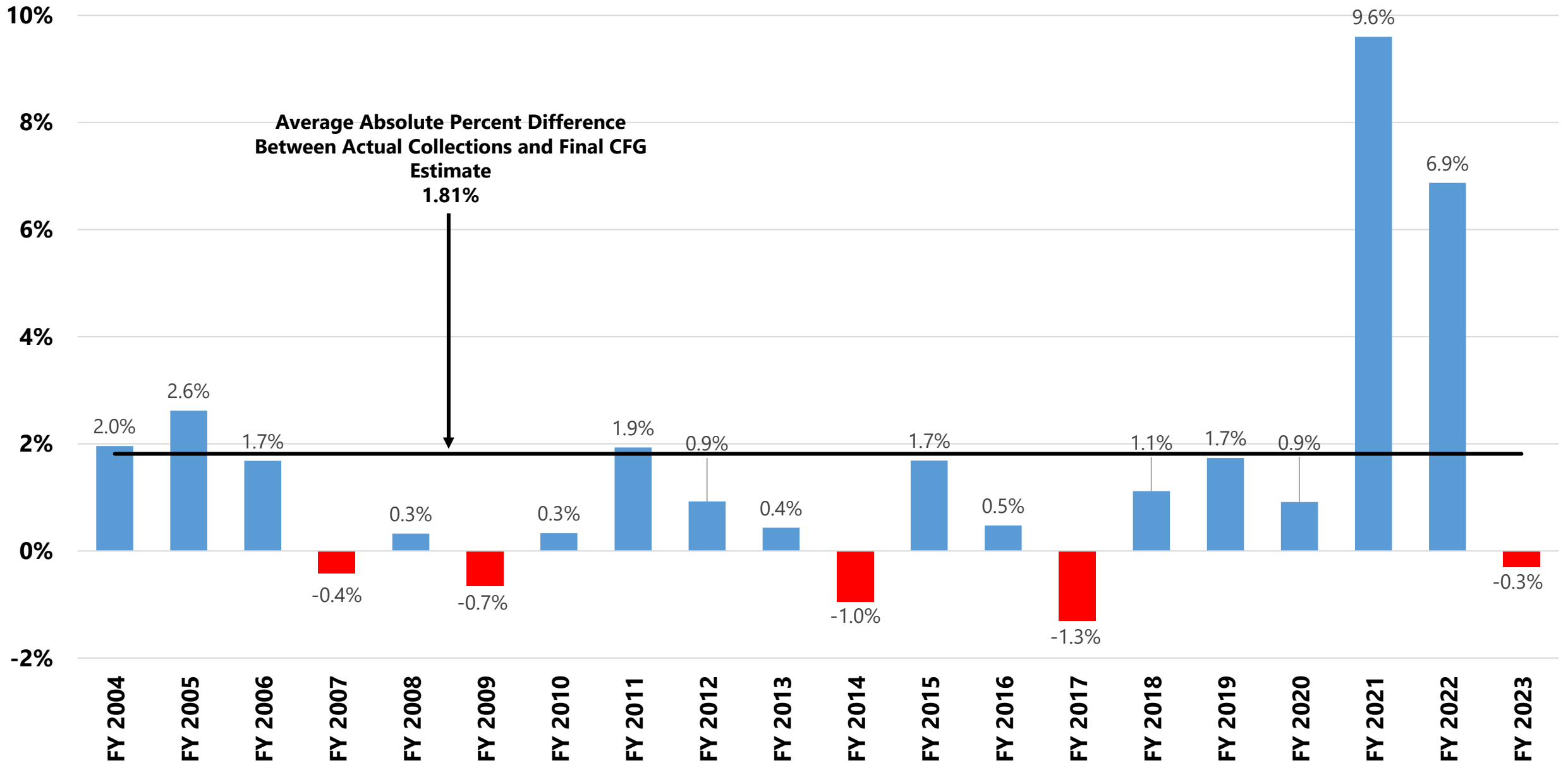


Difference Between Actual General Fund Collections and Final CFG Estimate

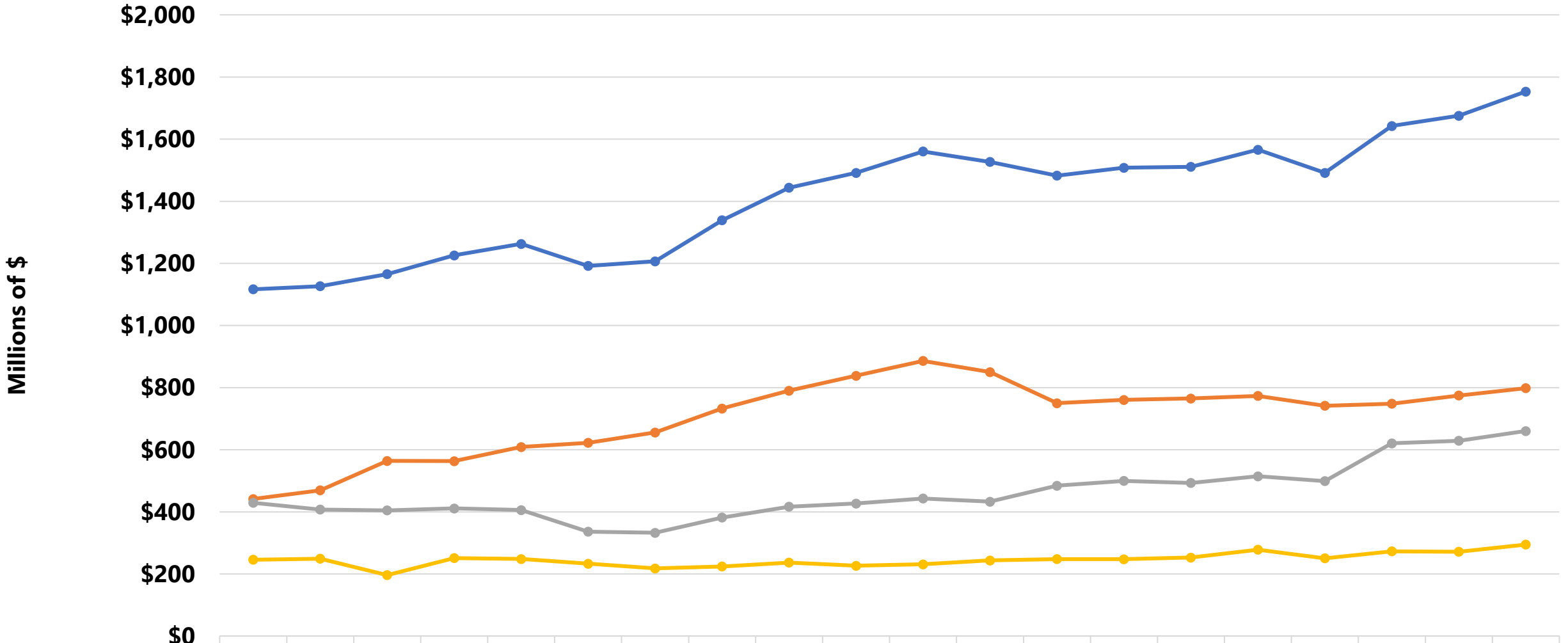
FY 2004 - FY 2023



Percent Difference Between Actual General Fund Collections and Final CFG Estimate, 2004 - 2023

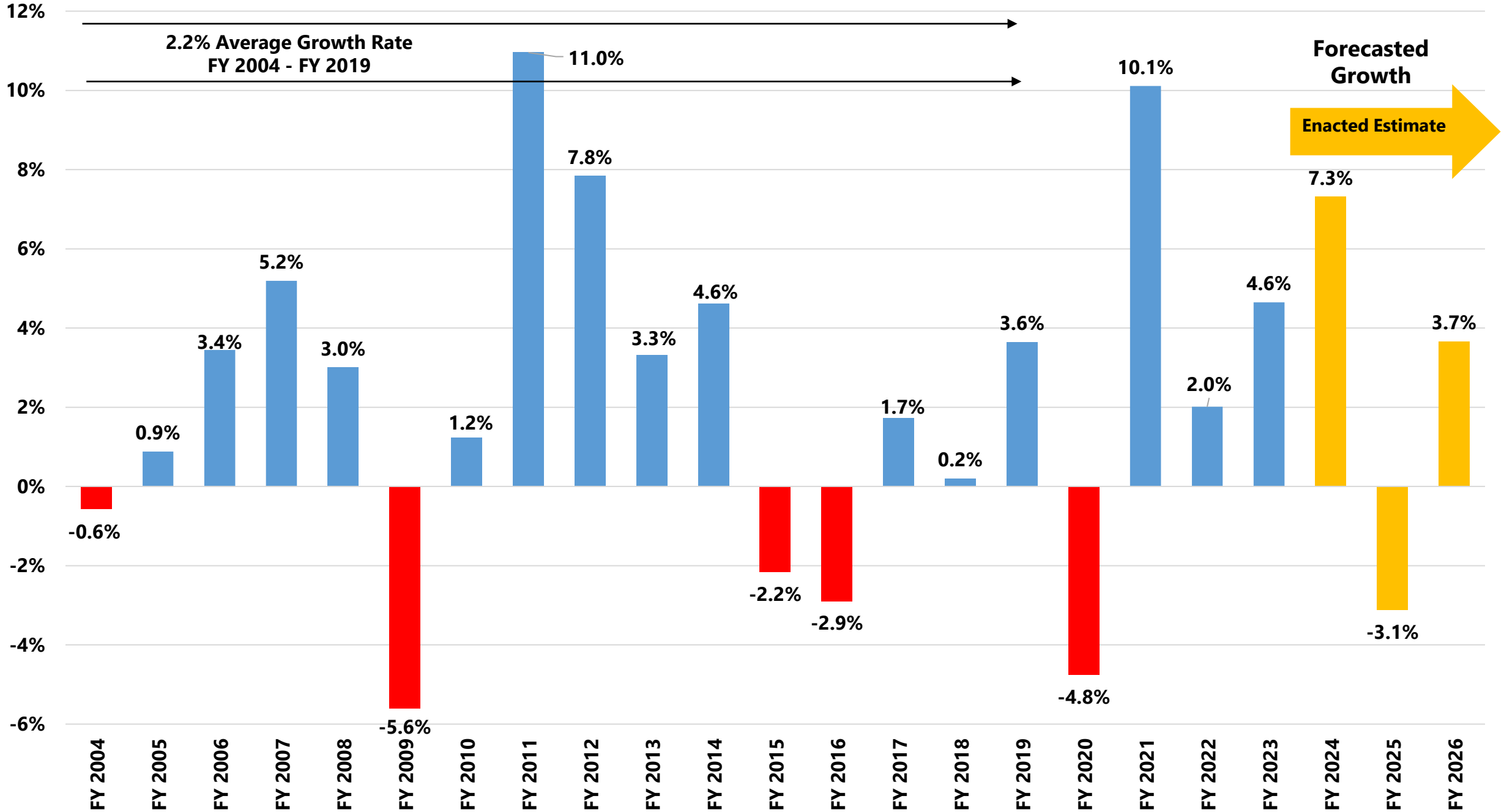


Road Fund History, FY 2004 - FY 2023

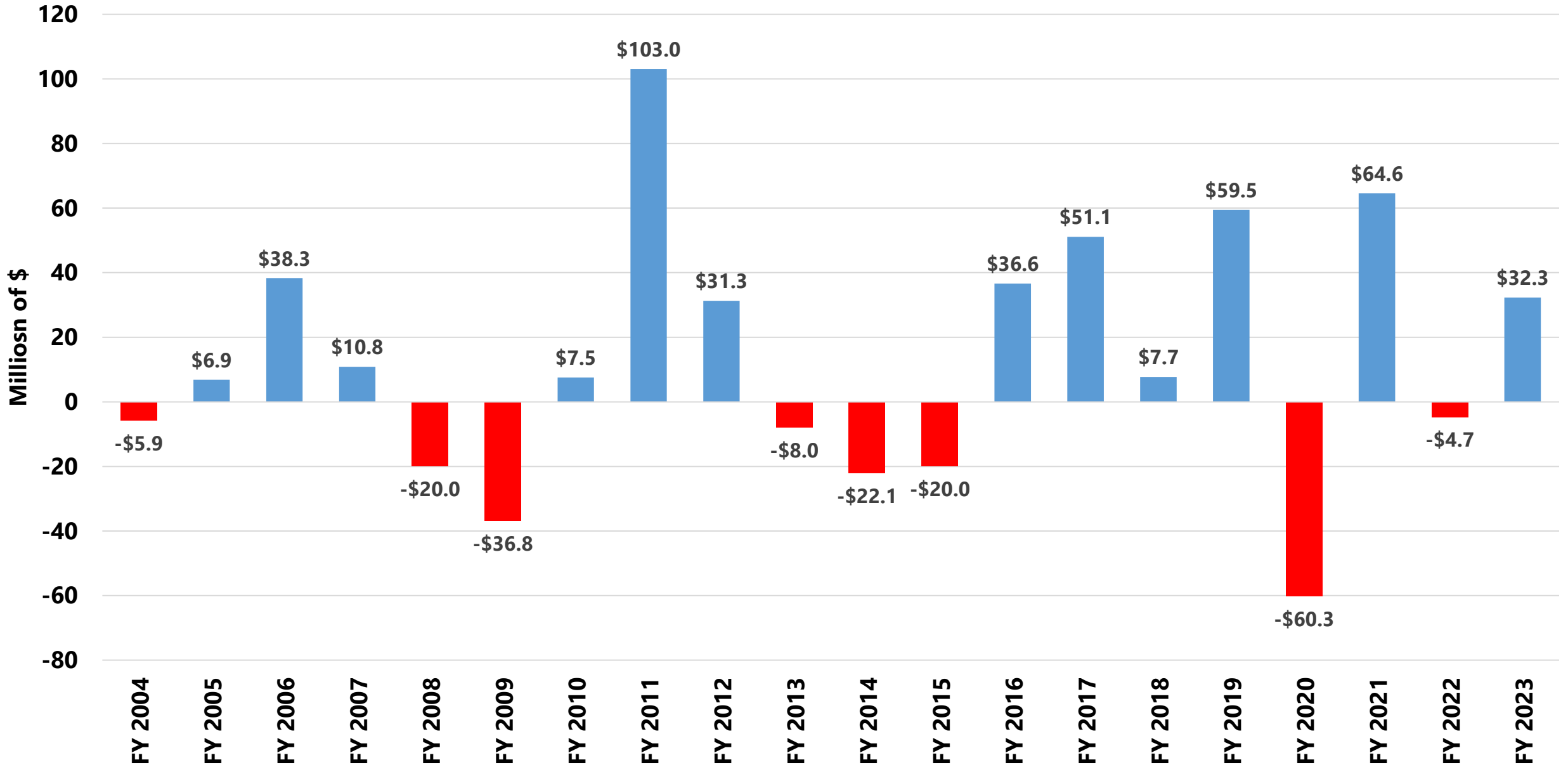


	FY 2004	FY 2005	FY 2006	FY 2007	FY 2008	FY 2009	FY 2010	FY 2011	FY 2012	FY 2013	FY 2014	FY 2015	FY 2016	FY 2017	FY 2018	FY 2019	FY 2020	FY 2021	FY 2022	FY 2023
Motor Fuels	\$441.4	\$469.6	\$563.9	\$563.4	\$608.8	\$622.5	\$655.8	\$732.8	\$790.2	\$838.3	\$886.2	\$850.3	\$750.0	\$760.5	\$764.9	\$773.2	\$741.6	\$748.4	\$774.6	\$798.3
Motor Vehicle Usage	\$429.2	\$407.5	\$404.8	\$411.3	\$405.8	\$336.3	\$332.8	\$381.8	\$416.9	\$426.8	\$443.0	\$432.8	\$484.4	\$499.8	\$493.1	\$514.5	\$499.3	\$620.9	\$629.1	\$660.3
All Other	\$246.1	\$249.4	\$196.7	\$251.3	\$248.2	\$233.2	\$218.1	\$224.2	\$236.7	\$226.4	\$231.3	\$243.7	\$248.1	\$247.7	\$252.9	\$278.3	\$250.6	\$273.1	\$271.6	\$294.7
Total Road Fund	\$1,116	\$1,126	\$1,165	\$1,225	\$1,262	\$1,192	\$1,206	\$1,338	\$1,443	\$1,491	\$1,560	\$1,526	\$1,482	\$1,508	\$1,511	\$1,566	\$1,491	\$1,642	\$1,675	\$1,753

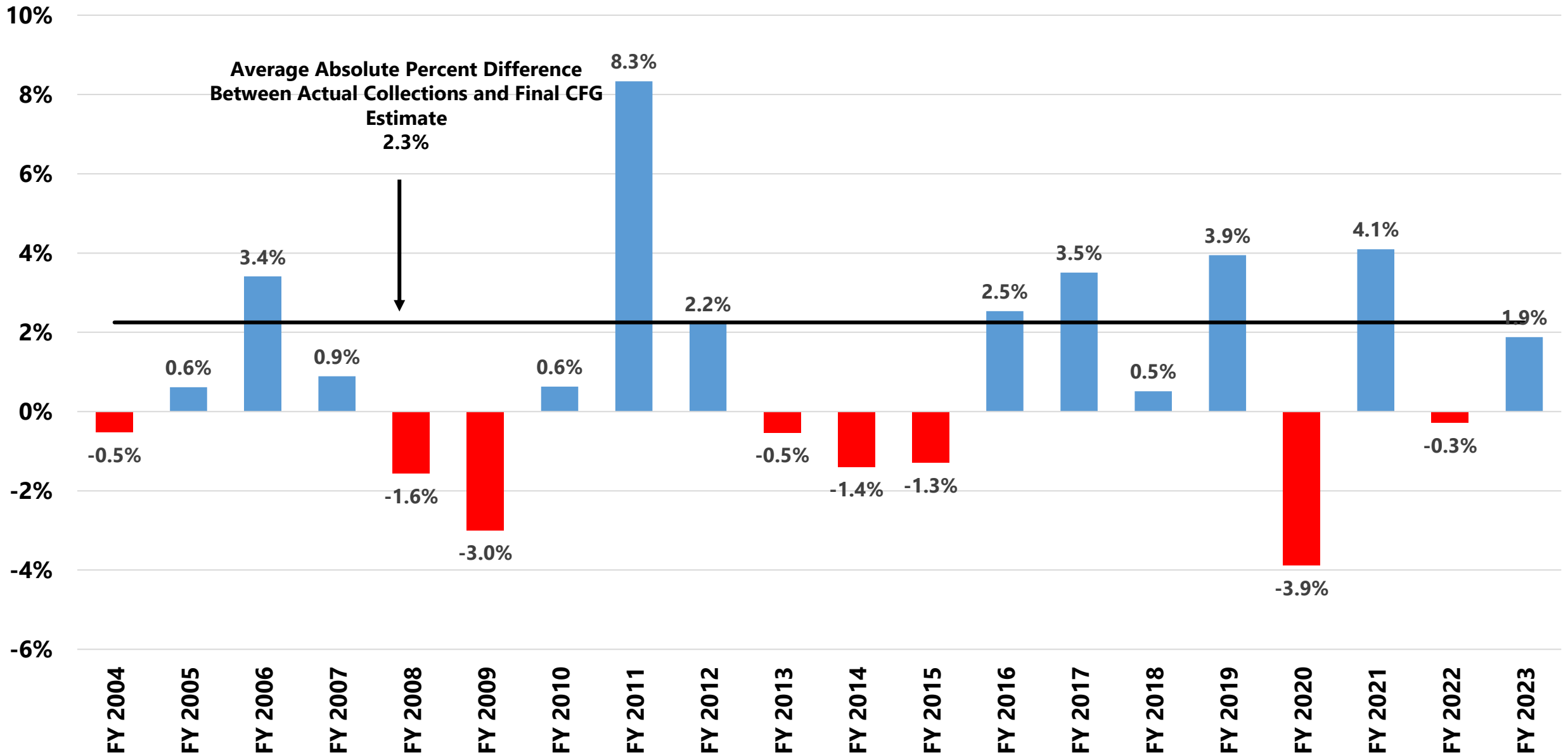
Road Fund Growth Rate, FY 2004 - FY 2026



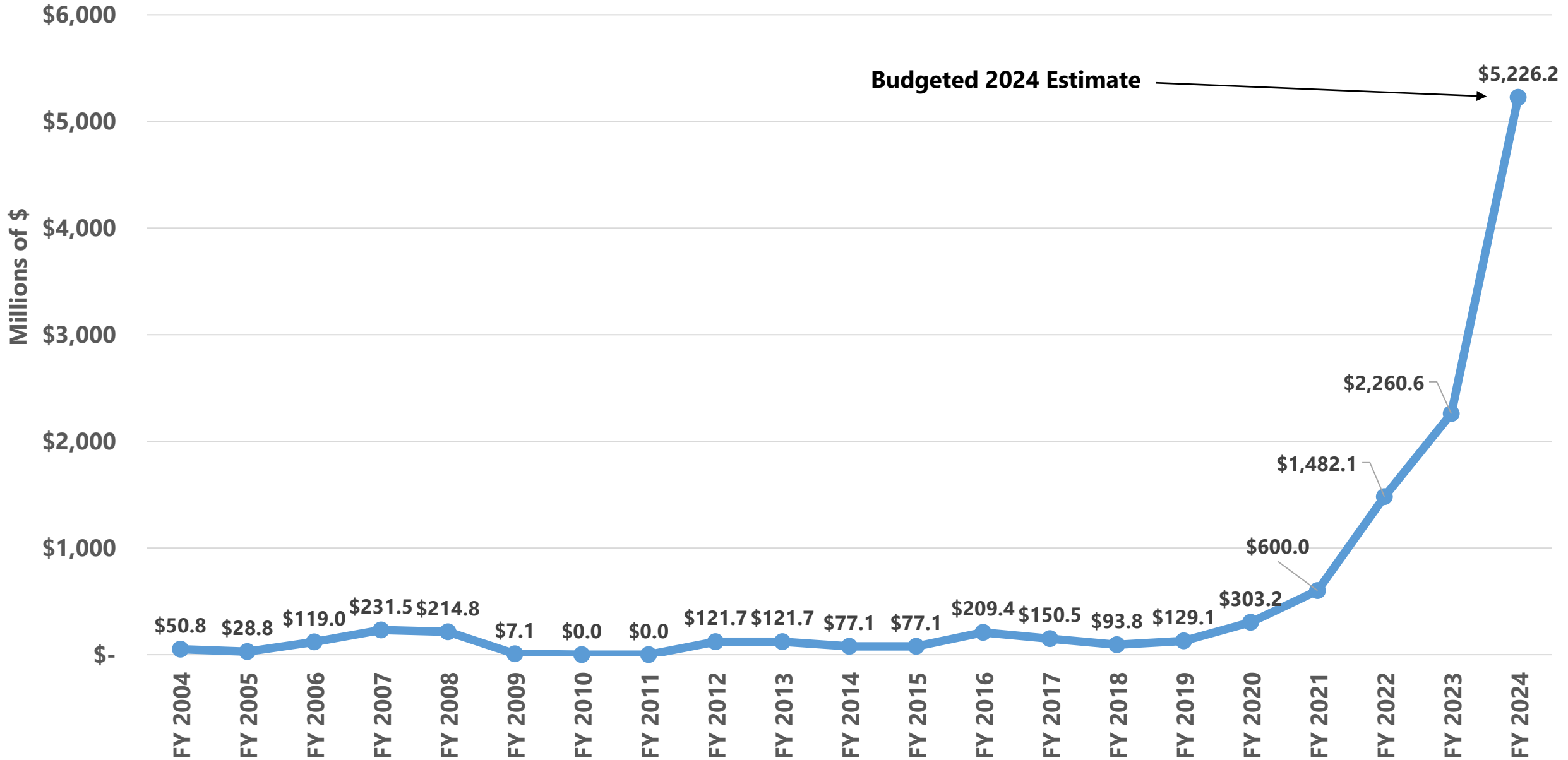
Difference Between Actual Road Fund Collections and Final CFG Estimate, FY 2004 - FY 2023



Percent Difference Between Actual Road Fund Collections and Final CFG Estimate, FY 2004 - FY 2023



Budget Reserve Trust Fund End of Year Balance, FY 2004 - FY 2024



Unemployment Trust Fund

Balance and Unemployment Loan Balance, CY 2004 - CY 2023

