

**House Appropriations and Revenue Committee, Budget Review  
Subcommittee on Postsecondary Education  
Presentation**



**MOREHEAD STATE UNIVERSITY**  
**Mr. Eric Howard, Board of Regents**  
*August 20, 2019*

# Morehead State University

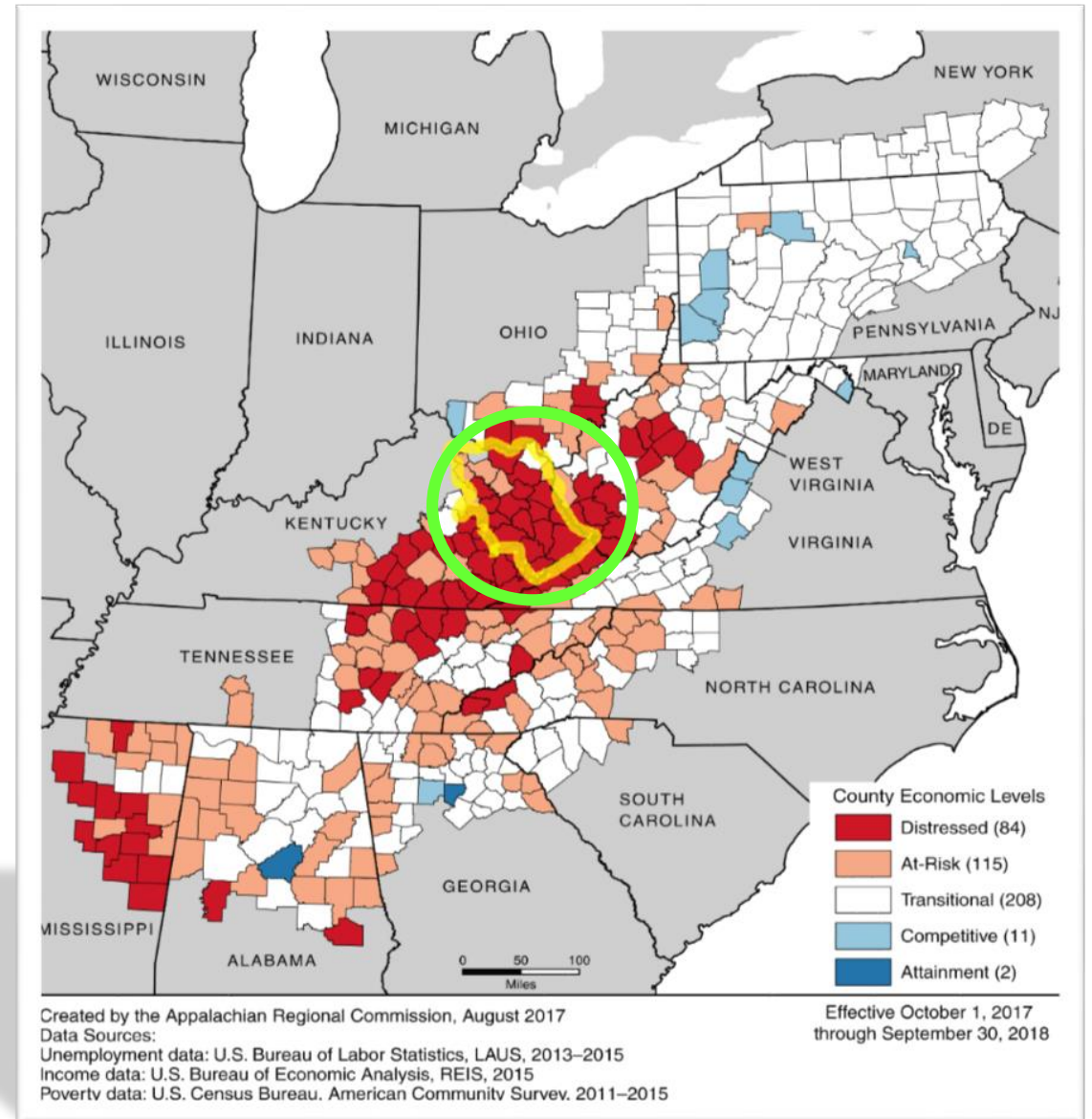
## Brief History

- Founded in 1887 as Morehead Normal School, it was a private, church-supported institution known as “a light to the mountains.”
- In 1926, it became part of the state-supported system and was renamed Morehead State Normal School and Teacher’s College.
- An increase in enrollment and degree programs resulted in successive renaming as Morehead State College (1948) and its current designation as Morehead State University (1966).
- In 2018, MSU had 10,000+ students enrolled



# Morehead State University Service Region

- Contains many of the **most distressed counties** in Kentucky and in the United States
- Approx. **110,000** regional residents live in **poverty**\*  
*\*U.S. Census Data*
- **85%** of MSU Students are from Kentucky



# Role of MSU Board of Regents in Governance

- Representatives of the service region
- Review of the mission statement every 4-6 years
- Establish long-range plans for the University
- Evaluate institutional progress
- Appoint and evaluate the President
- Define and address conflicts of interest for members
- Protect the institution from undue influence by external entities
- Establish appropriate and fair processes for the dismissal of members
- Define and regularly evaluate the Board's responsibilities



# Role of MSU Board of Regents in Financial Management

- Reviews and approves the annual operating budget
- Establishes policy related to the financial operations of the University
- Approves the contract for an independent auditing firm and the minimum scope of the audit
- Appoints an Audit Committee of the Board of Regents to assist the Board in fulfilling its oversight responsibilities
- Charges the President to review and authorize university contracts, agreements, and payments that legally or financially bind the University as deemed appropriate by the President and/or the Board.
- Board ratifies personnel actions on a quarterly basis
- Authorizes the purchase, sale or removal of property
- Approval and closure of academic programs
- Approves fundraising priorities



