

KENTUCKY COMMUNITY AND TECHNICAL COLLEGE SYSTEM

JULY 2023

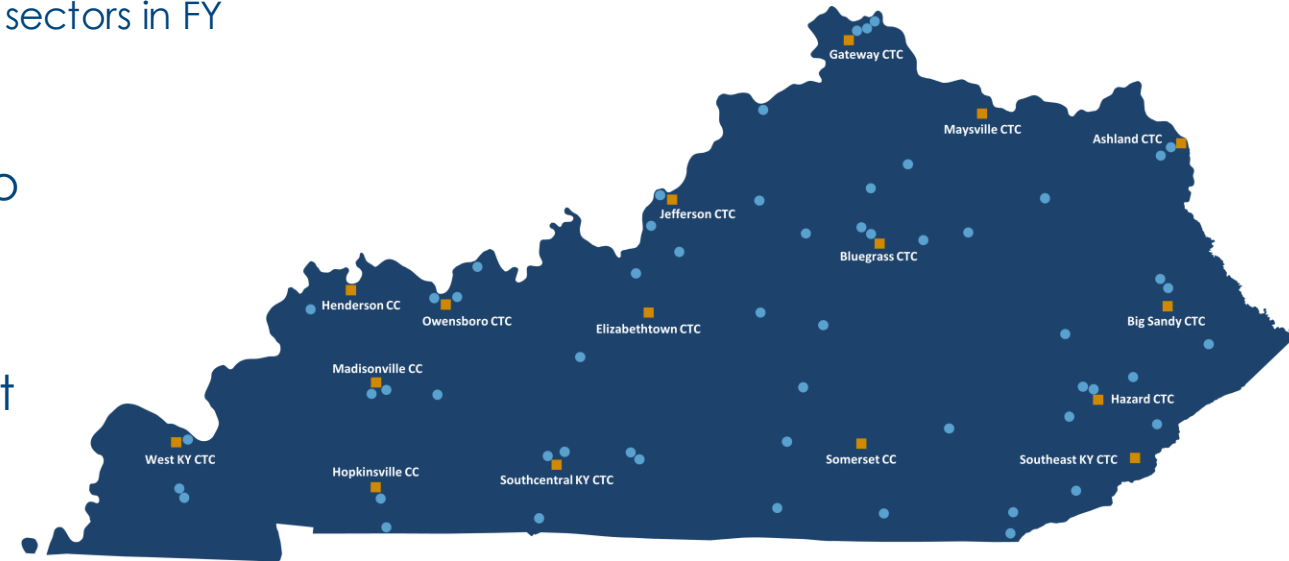
KCTCS is higher education, with a focus on HIRE education.



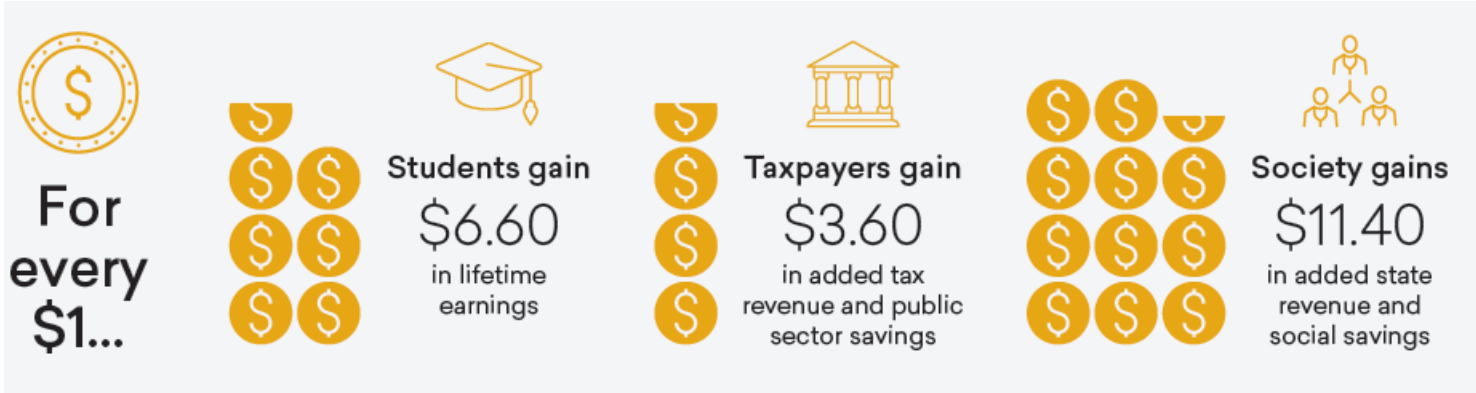
KCTCS IS THE LARGEST PROVIDER OF POSTSECONDARY EDUCATION AND WORKFORCE TRAINING IN KY

- Annual enrollment of nearly 100,000 students in FY22.
 - Awarded **39,930 credentials** to **21,013 graduates** in FY 23.
 - **76% graduates** earned credentials in KY's five targeted sectors in FY 23.
-
- Approximately **14,000 KCTCS students transfer** to 4-year institution each year
 - Since 2016-17, KCTCS increased KY skilled talent pipelines
 - **Total credentials awarded +16%**
 - **Number of graduates + 30%.**
 - KCTCS awards **96% of short-term certificates** in the state (taking less than one year to complete).

KCTCS OVERVIEW



ECONOMIC IMPACT



KCTCS
TOTAL ANNUAL
IMPACT

\$3.5 billion
In added income



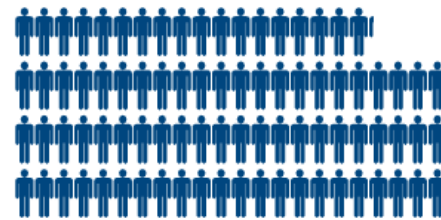
Alumni impact

Impact of the increased earnings of KCTCS alumni and the businesses they work for

\$3.2 billion
Added income

- OR -

42,110 Jobs supported



enough to fill
Rupp Arena 2X



👤 = 500 jobs



KENTUCKY
COMMUNITY & TECHNICAL
COLLEGE SYSTEM

WORKFORCE IMPACT

Healthcare

- **7,000 individuals trained**, an increase of **6% over the prior year** and **33% since 2016-17**
- KCTCS awards **two-thirds** of all nursing and allied health and **nearly 90 percent** of associate degrees in nursing in Kentucky.

Transportation & Logistics

- Nearly **3,000 graduates** from KCTCS programs
- Increase of **69% over the prior year** and **184% since 2016-17**.

Skilled Trades

- **93% of students** seeking a Skilled Trade career chose KCTCS as their education and training provider.

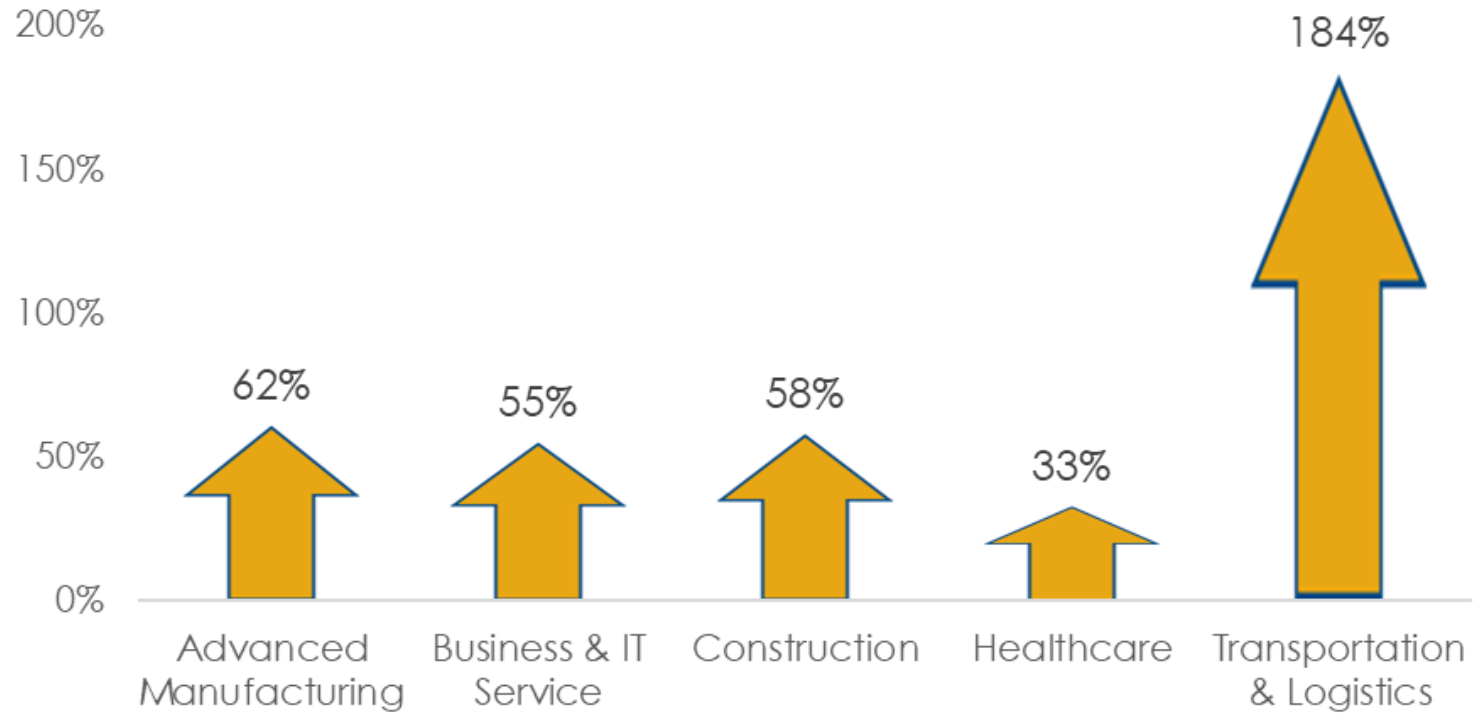
Advanced Manufacturing

- Awarded **7,311 credentials to 2,946 graduates**. **18.3% in increase in credentials** awarded and **14.0% in graduates** from prior year.
- Since 2016-17 **54% increase in annual graduates**.



WORKFORCE IMPACT

KCTCS Increase in Graduates by Targeted Industry Sector
2016-17 to 2022-23



HOW WE ARE DIFFERENT

- Open Access – **Training for every Kentuckian**
 - Commuter, First Gen, Under-prepared, Part-time
- Our graduates **stay in the Commonwealth**
- **MOST KCTCS STUDENTS GRADUATE DEBT-FREE**
 - 78.5% receive financial aid and 66% paid \$0.

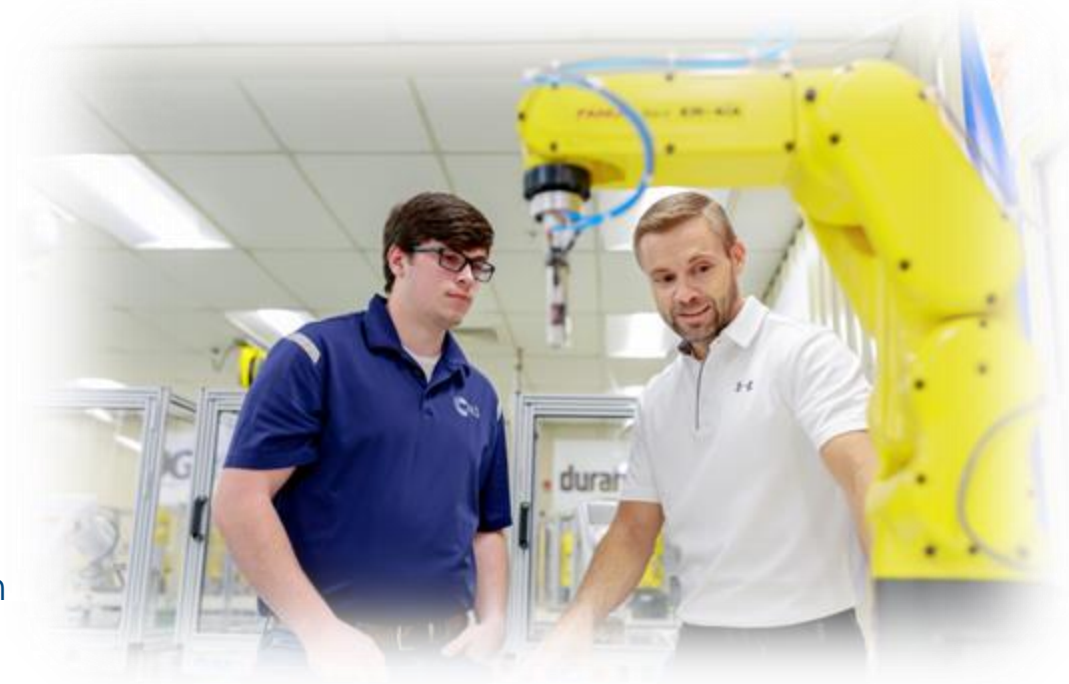
Loan Debt Average by Type of Credential Earned (2019-2020)			
Credential Type	KCTCS	Public 4-Years (Ky)	Difference
Bachelor's Degree	N/A	\$35,840	N/A
Associate's Degree	\$15,803	\$25,101	-\$9,298
Undergraduate Certificate (1-2 Years)	\$16,299	\$41,213	-\$24,914
Undergraduate Certificate (Less than 1 Year)	\$12,615	\$33,996	-\$21,381
All Credential Types	\$14,112	\$35,449	-\$21,337

Source: Kentucky Council on Postsecondary Education, Financial Aid by Institution Dashboard (Debt Trend Tab).

Industry Sector	% Employed in KY One Year After Graduation
Advanced Manufacturing	76.0%
Business & IT Service	74.5%
Construction	73.7%
Healthcare	76.0%
Transportation & Logistics	74.7%
Not TIS	61.1%
KCTCS Total	74.6%

PROGRAM CHALLENGES

- **Faculty Recruitment**
- **Program regulations**
 - Healthcare example
- **Specificity versus scalability**
- **It's expensive to stay up-to-date**
 - Every company uses different equipment
 - Standard v.s. Metric
- **Student needs – partnership imperative**
 - Ex: Family Scholar House serves 300-400 ECTC students each month



FUNDING CHALLENGES

- Bonding Capacity
- Impact Endowments
- Capital projects
- Holistic student support services
- No differential tuition
- Mission vs. Business Model



WORKFORCE INNOVATION & HIGHLIGHTS

- Economic Development
 - **9 commitments ~ \$3 Million +**
 - Company Launches - Kreuger, Ford, Nucor, Envision
- Employer Partnership Enhancement
 - **2,777 Partnerships**
- Education First Employers
 - **37 Companies**
- Handshake
 - **1890 Employers**
 - **297,041 Job Postings**



Companies Served (FY 23)	1,162
Workforce Customized Training Enrollments (FY 23)	43,505
Dollars Invested (FY 23)	\$6,035,970
Total Number of Projects (Growth FY 2021-23)	+121%
Repeat Companies (Growth FY 2021-23)	+179%
New Companies (Total FY 21-23)	290 Companies

OPPORTUNITIES

- **Increased Work Ready KY Scholarship Funding**
 - Summer terms
 - Education
 - Hospitality
- **Greater access to student support**
- **More Dev Ed Opportunities without credit hours**
- **KCTCS Facilities**
- **Just-in-time Education & Business Partnerships**



CONTACT INFO

JESSIE SCHOOK

VICE PRESIDENT, WORKFORCE AND ECONOMIC DEVELOPMENT
KENTUCKY COMMUNITY AND TECHNICAL COLLEGE SYSTEM

300 NORTH MAIN STREET, VERSAILLES, KY 40383

JESSIE.SCHOOK@KCTCS.EDU

O: 859.256.3249

C: 502.593.6841

JUSTON PATE

PRESIDENT/CEO, ELIZABETHTOWN COMMUNITY AND TECHNICAL COLLEGE

600 COLLEGE STREET ROAD

ELIZABETHTOWN, KY 42701

JUSTON.PATE@KCTCS.EDU

O:270.8410

C:270.307.2672



KENTUCKY
COMMUNITY & TECHNICAL
COLLEGE SYSTEM