



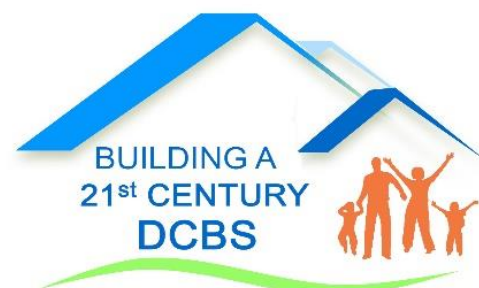
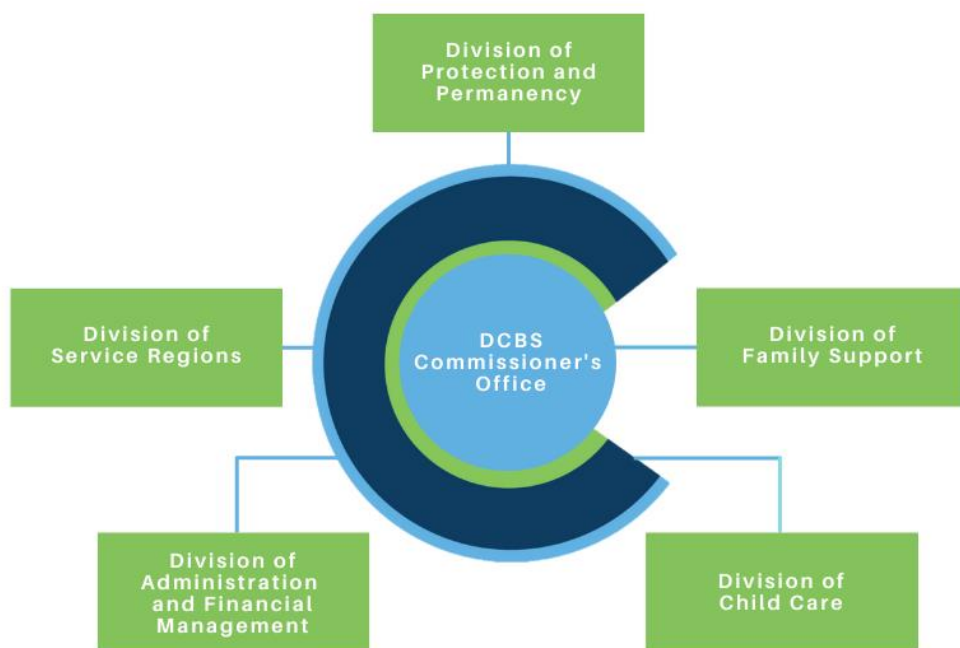
# DCBS:

## A Community of Support and Care

### Our Mission

To build an effective and efficient system of care with Kentucky's citizens and communities to:

- Reduce poverty, adult and child maltreatment, and their effects;
- Advance person and family self-sufficiency, recovery, and resiliency;
- Assure all children have safe and nurturing homes and communities; and
- Recruit and retain a workforce and partners that operate with integrity and transparency



Department for Community Based Services

Designed within a culture of safety through the infusion of primary and secondary prevention initiatives.

**Phase I:** Stabilization (6 months)

**Phase II:** Innovation (18 months)

**Phase III:** Thriving (3-year plan)

DCBS is comprised of more than 4,400 employees in five divisions with offices in every county and one central office leadership team managing staff and operations.

# Building a 21<sup>st</sup> Century DCBS

## The Five Pillars



**Equity: Social and Economic:  
Racial Disparities & Poverty:**  
Economic Support



**Health and Wellness:** Behavioral Health, Mental Health, and the Opioid Crisis



**Trauma/Resilience and Engaged Healing:** Clients and Staff



**Operations/Implementation and Evaluation:** Systemic and Structural Changes



**Families/Children/Youth**

## Our Commitment to Assisting Families

### Statistics for the Month of April 2021

Regulated Child Care Providers in Kentucky: 1,994

Families Receiving Child Care Assistance: 10,442

Households Receiving LIHEAP (Home Energy) Assistance: 28,252

Households Receiving KTAP (Financial, Medical, and Employment) Assistance: 10,932

Households Receiving SNAP (Food Purchasing) Assistance: 292,743

State Supplemental Assistance for Aged, Blind, or Disabled Individuals: 3,669

Children in Out-of-Home Care: 9,156

Children w/ Substantiated Reports or Services Needed: 21,278  
(May 1, 2020 – April 30, 2021)

Families Receiving Child Welfare Prevention Services (March 2021): 1,168  
Percent of Participating Children Remaining In-Home at Closure: 91-93%