



JISEKI HIGHLIGHTS

PIONEERING WHOLE PERSON CARE IN
KENTUCKY



FROST & SULLIVAN'S VISIONARY INNOVATION LEADERSHIP AWARD

Presented to JISEKI Health for Holistic Care Access & Delivery in North America



TECHNOLOGY PATENT FOR JISEKI CARE PLATFORM

SMS, #TAGS, Flexible Response Workflows that include People, A.I., & BOTS for treating WHOLE PERSON CARE Issues

PROACTIVE NOT REACTIVE CARE

Assessment, Screening, Intervention & Outcomes managed by a multi-disciplinary team of WHOLE PERSON CARE network

JISEKI IS A VALUE-BASED PAYVIDER SYSTEM

Cities & Counties directly pay for JISEKI care

⁽¹⁾ CDC report of annual ambulatory care visits in the United States per year, including those at primary care offices, ER, outpatient clinics and other settings, [FDIC.gov](https://www.fdic.gov) on un-banked and under banked

MASSIVE PROBLEM

VULNERABLE POPULATIONS HAVE A UNIQUE STRUGGLE

MANY FIND THEMSELVES TRAPPED IN A
NEGATIVE TRIFECTA OF LOW
AFFORDABILITY, LITTLE TO NO ACCESS,
AND EVEN LESS HOPE.

KENTUCKY IS RANKED NEARLY LAST IN MOST AREAS

Status-quo under the current health insurance system is not working. Too expensive. Too Complicated. Too Impersonal.

MEDICAID BENEFICIARIES HAVE HIGH SOCIAL NEEDS (#SDOH) & HIGH MEDICAL NEEDS

When presented with financial insecurity, behavioral health, substance abuse, and chronic diseases spring those in rural and underserved areas like KY simply don't have access to quality care or don't know their options.

MACRO TRENDS ALIGN WITH JISEKI ADOPTION

JISEKI IS AT A KEY INFLECTION POINT



95% OF ADULTS <50 YEARS OWN
SMARTPHONES AND CAN TEXT ⁽¹⁾



MAYORS & JUDGE EXECUTIVES WANT
TO OFFER WHOLE PERSON CARE



INCREASED CONSUMER DEMAND FOR
NEEDS BASED HEALTH BENEFITS PLAN ⁽²⁾



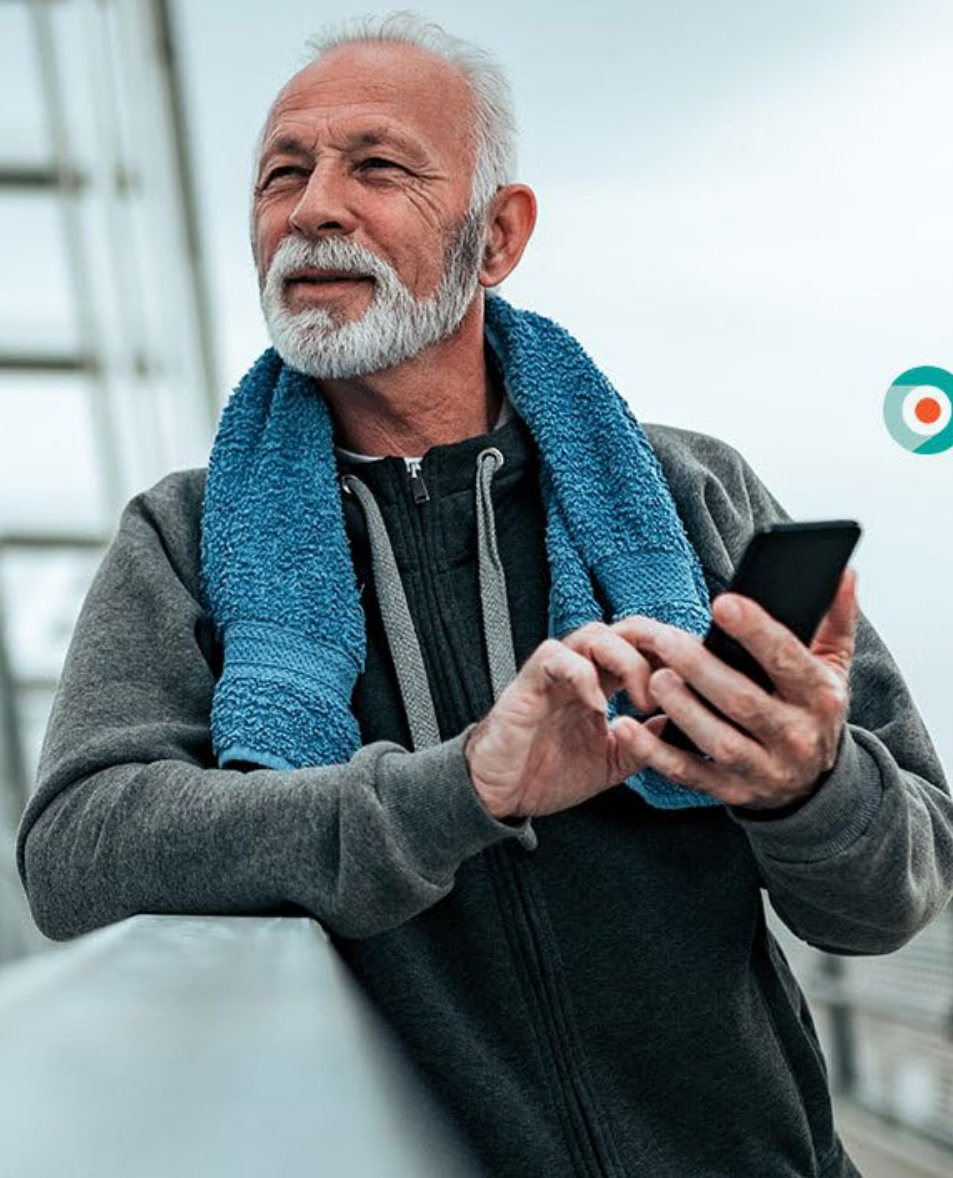
REGULATORY HURDLES REMOVED FOR
TELEHEALTH ADOPTION ⁽³⁾

⁽¹⁾ Comscore 2018

⁽²⁾ National Business Group on Health 2018

⁽³⁾ American Telemedicine Association 2018

WELCOME TO THE FUTURE
Peace of mind.
For wherever life takes you.



5 SECONDS TO PERSONALIZED CARE



JISEKI IS AN UPSTREAM MEDICAL PROVIDER OF
**QUALITY WHOLE PERSON CARE &
PERSONALIZED CUSTOMER ENGAGEMENT**
TO THE
VULNERABLE POPULATIONS

- Benefit plan built on SMS text platform (patent pending)
- Offered to Cities & Counties as a subscription plan
- Registered PATIENT text #plan to 543210 to get started – its that easy.
- Every PATIENT's needs are serviced by a team of multi-disciplinary whole person care providers

JISEKI

Welcome to JISEKI Health

You now have access to a complete network of professionals, including medical authorities, support services, and licensed experts - all through the convenience of your phone.

It's as easy as **1-2-3!**

- 1 CHECK YOUR EMAIL**
You will have received a welcome email from support@zhhealthcare.com reminding you to sign a medical consent form.
Don't forget to **sign the medical consent form!**
- 2 USE JISEKI HASHTAGS**
Once you electronically sign the medical consent form, use JISEKI hashtags to explore your benefits! It's that easy!
You'll receive an email with your **very own Member ID** that you'll need to provide when making concierge calls.
- 3 EXPLORE YOUR PORTAL**
You'll receive an email from support@jisekihealth.com inviting you to access your secure patient portal.

Have a question that needs answering? **JISEKI will always be a hashtag away.**
Text any of the following hashtags to 543210 and a JISEKI Wellness Concierge will connect you to our breadth of services.

#DENTIST

- Routine Care
- Cosmetic Counseling
- Trauma
- Endodontist
- Cavity Fillings

#TALK

- Mental Health Therapist
- Psychiatrist
- Psychologist
- Spiritual Counselor
- Family Planner
- Emotional AI

#DOC

- Clinical Care Doctors
- Primary Care Doctors
- Nutritionists
- Diabetic Counseling
- Pharmacy
- Whole Person Care Screening

#MONEY

- Financial Counsel
- Tax Advisory
- Identity & Fraud Management
- Insurance
- Legal Advisory

Text **#feedback** to submit a service ticket
 www.JISEKIbenefits.com/contact-us
 customerservice@JISEKIhealth.com

HEALTH CARE



24 X 7 ACCESS TO PRIMARY
CARE PROVIDERS



JISEKI DISCOUNT LABS & Rx



JISEKI DISCOUNT DENTAL PLAN

FINANCIAL CARE



JISEKI NO FEES DEBIT
MASTERCARD

FINANCIAL ADVICE

MEDICAL DEBT



ACCESS TO TREATMENT CENTER



ACCESS TO 24 X 7 CRISIS INTERVENTION



TRACK YOUR SOBRIETY

SUBSTANCE ABUSE PROGRAM



ACCESS TO BEHAVIORAL
HEALTH SERVICES



ACCESS TO
PSYCHIATRIST/PSYCHOLOGIST



A.I. FOR EMOTIONAL SUPPORT &
PASTORAL CARE

MENTAL HEALTH

ATTRACTIVE VALUE PROPOSITION



VULNERABLE POPULATIONS

Peace of mind for the whole family

On-demand and always available

Highly affordable service: No co-pays, no premiums

Higher engagement rate, 90% satisfaction

Better health outcomes



CITIES & COUNTIES

Over 30% Cost Savings

50% to 250% ROI on Healthcare investment

Higher productivity, increased output,
increased workforce participation



PROVIDERS

Meaningful & predictable income

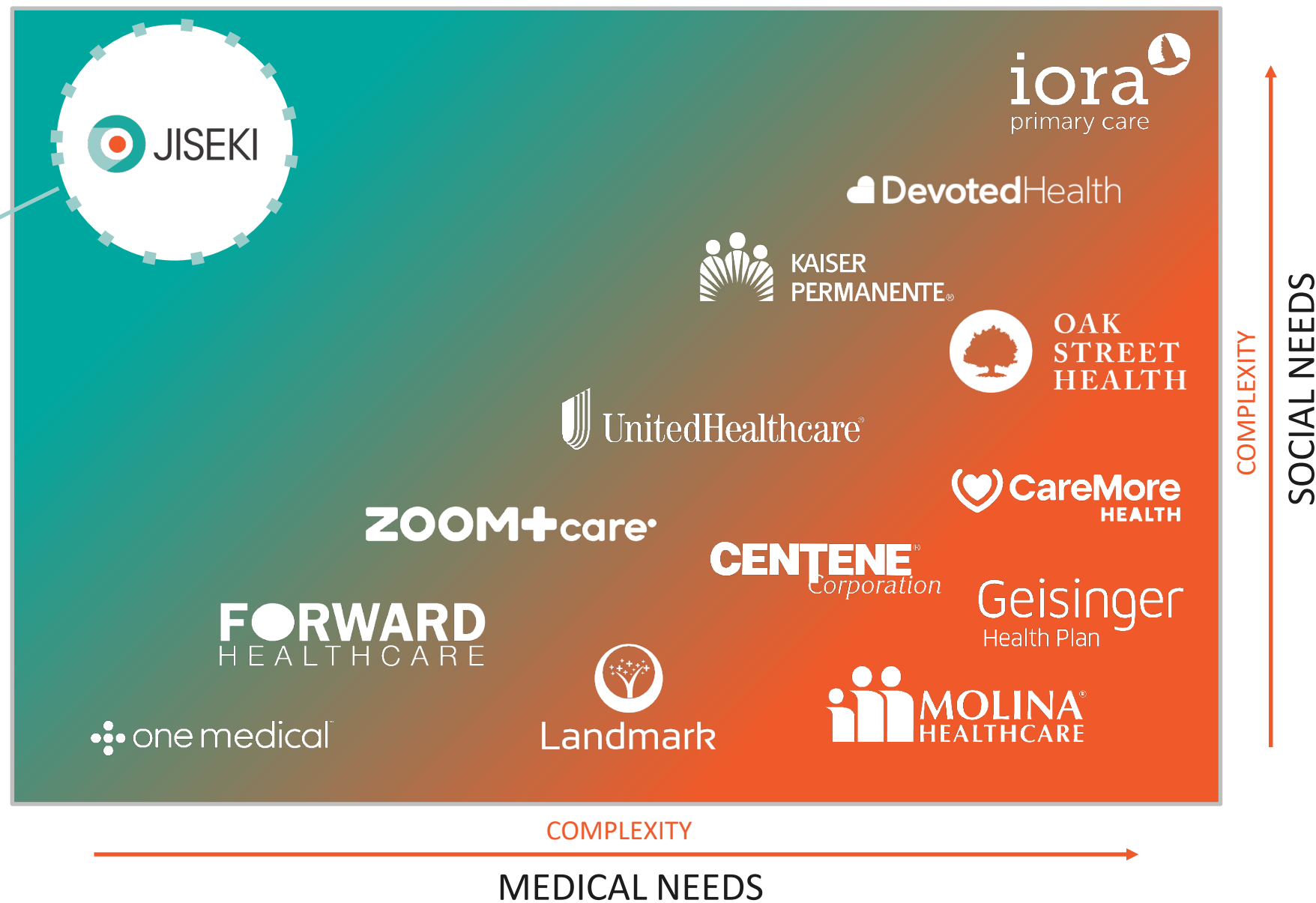
Less administration

Simple reimbursement

Practice holistic care

HIGH SOCIAL + LOW MEDICAL NEEDS

A UNIQUE FOCUS ON WHOLE PERSON CARE



JISEKI HAS ASSEMBLED AN AMBITIOUS WORLD CLASS TEAM ACROSS HEALTHCARE,
HI-TECH, RETAIL, FINTECH & GAMING.



TOGETHER WE CAN DELIVER ON THE AMERICAN DREAM.

#RESTORE #AMERICAN-DREAM

ASK

PLEASE SUPPORT OUR MISSION TO PROVIDE DIRECT ACCESSIBLE,
AFFORDABLE WHOLE PERSON CARE TO VULNERABLE POPULATIONS

**FOR ANY MEMBER OR STAFF WHO HAS NOT YET RECEIVED AN INDIVIDUAL
DEMO PRESENTATION OF THE JISEKI PLATFORM, PLEASE CONTACT
BILL MARSHALL AT BMARSHALL@JISEKIHEALTH.COM**

THANK YOU FOR YOUR TIME AND WE LOOK FORWARD TO SHARING
FURTHER PROGRAM RESULTS WITH YOU IN THE COMING MONTHS

A collage of various human faces, mostly in grayscale, arranged in a grid-like pattern. The faces show a wide range of ages, ethnicities, and expressions, including smiling, looking thoughtful, and looking directly at the camera. The central text 'THANK YOU' is overlaid on the middle of the collage.

THANK YOU