



Update On Supports For Community Living

**Program Review and Investigations
Committee**

June 14, 2018



Medicaid Waivers And Supports For Community Living

- Home and community-based services (HCBS) waivers
- Kentucky has six active waivers serving specific populations
- Supports for Community Living (SCL) serves individuals with intellectual and developmental disabilities
- Americans with Disabilities Act and Olmstead



SCL Reimbursement Rates 2004-2017

Type Of Service	Unit	Average Payment		
		July 2004	Dec. 2017	
			Nominal	Constant 2004
Residential—Group Home	Day	\$65.51	\$128.11	\$97.72
Residential—Staffed Residence	Day	169.23	176.00	134.25
Residential—Residential Family Care	Day	64.24	140.63	107.27
Direct Personal	Quarter hour	3.47	2.79	2.13
Case Planning	Month	362.86	318.24	242.75
Therapy	Quarter hour	26.32	22.49	17.15
Employment	Quarter hour	5.48	10.25	7.82



SCL Reimbursement Rates 2004-2017

Type Of Service	Unit	Average Payment		
		July 2004	Dec. 2017	
			Nominal	Constant 2004
Residential—Group Home	Day	\$65.51	\$128.11	\$97.72
Residential—Staffed Residence	Day	169.23	176.00	134.25
Residential—Residential Family Care	Day	64.24	140.63	107.27
Direct Personal	Quarter hour	3.47	2.79	2.13
Case Planning	Month	362.86	318.24	242.75
Therapy	Quarter hour	26.32	22.49	17.15
Employment	Quarter hour	5.48	10.25	7.82



SCL Reimbursement Rates 2004-2017

Type Of Service	Unit	Average Payment		
		July 2004	Dec. 2017	
			Nominal	Constant 2004
Residential—Group Home	Day	\$65.51	\$128.11	\$97.72
Residential—Staffed Residence	Day	169.23	176.00	134.25
Residential—Residential Family Care	Day	64.24	140.63	107.27
Direct Personal	Quarter hour	3.47	2.79	2.13
Case Planning	Month	362.86	318.24	242.75
Therapy	Quarter hour	26.32	22.49	17.15
Employment	Quarter hour	5.48	10.25	7.82



SCL Reimbursement Rates 2004-2017

Type Of Service	Unit	Average Payment		
		July 2004	Dec. 2017	
			Nominal	Constant 2004
Residential—Group Home	Day	\$65.51	\$128.11	\$97.72
Residential—Staffed Residence	Day	169.23	176.00	134.25
Residential—Residential Family Care	Day	64.24	140.63	107.27
Direct Personal	Quarter hour	3.47	2.79	2.13
Case Planning	Month	362.86	318.24	242.75
Therapy	Quarter hour	26.32	22.49	17.15
Employment	Quarter hour	5.48	10.25	7.82



SCL Reimbursement Rates—2004

- Provider tax of 5.5% implemented
- 10.8% across-the-board SCL rate increase
- Net rate increase 4.7% after tax
- Spending/member increased \$20/month until 2006



SCL Reimbursement Rates—2006

- Implemented lawsuit settlements
- April service and rate restructuring
- Some rates increased, others decreased
- Average spending/member increased 26% by September
- After September, spending/member increased \$1.70/month



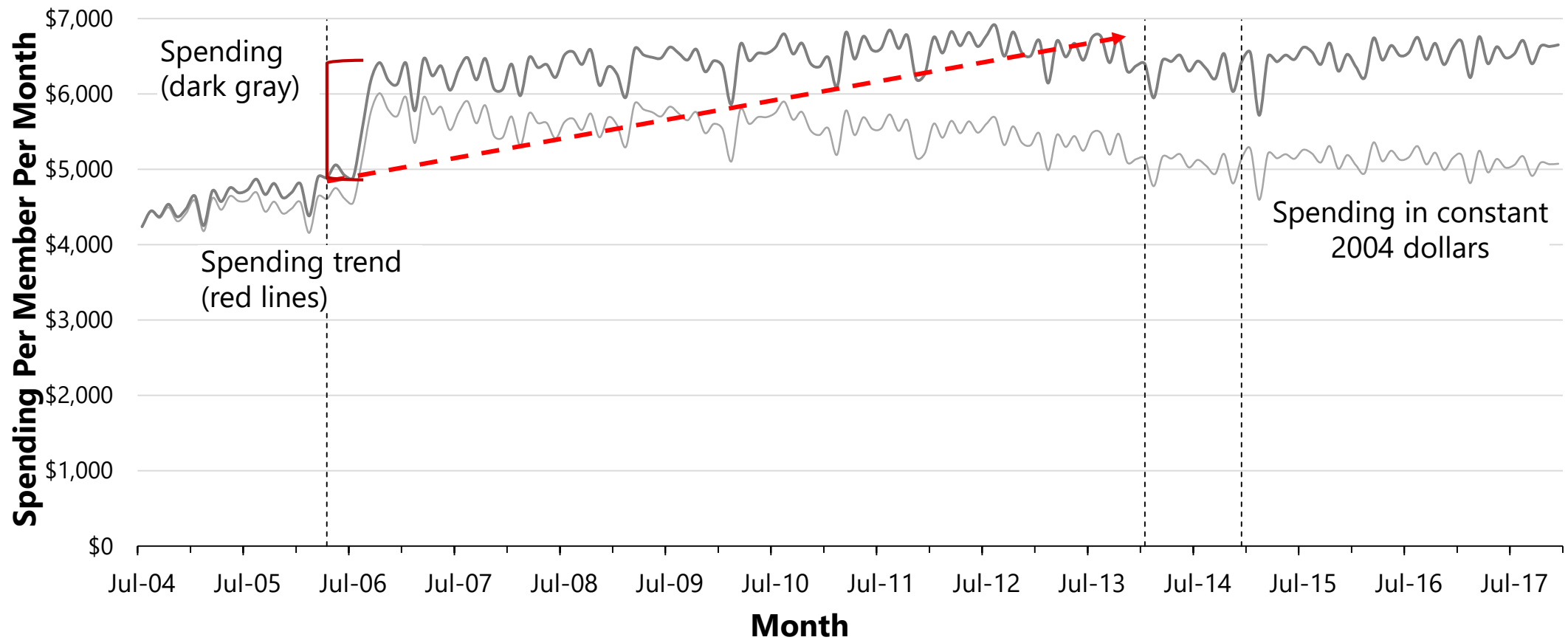
SCL Reimbursement Rates—2014

Significant service changes:

- Most rates fell
- Rates for supported employment and residential family care increased
- Exceptional payments for some members
- Average spending/member remained stable

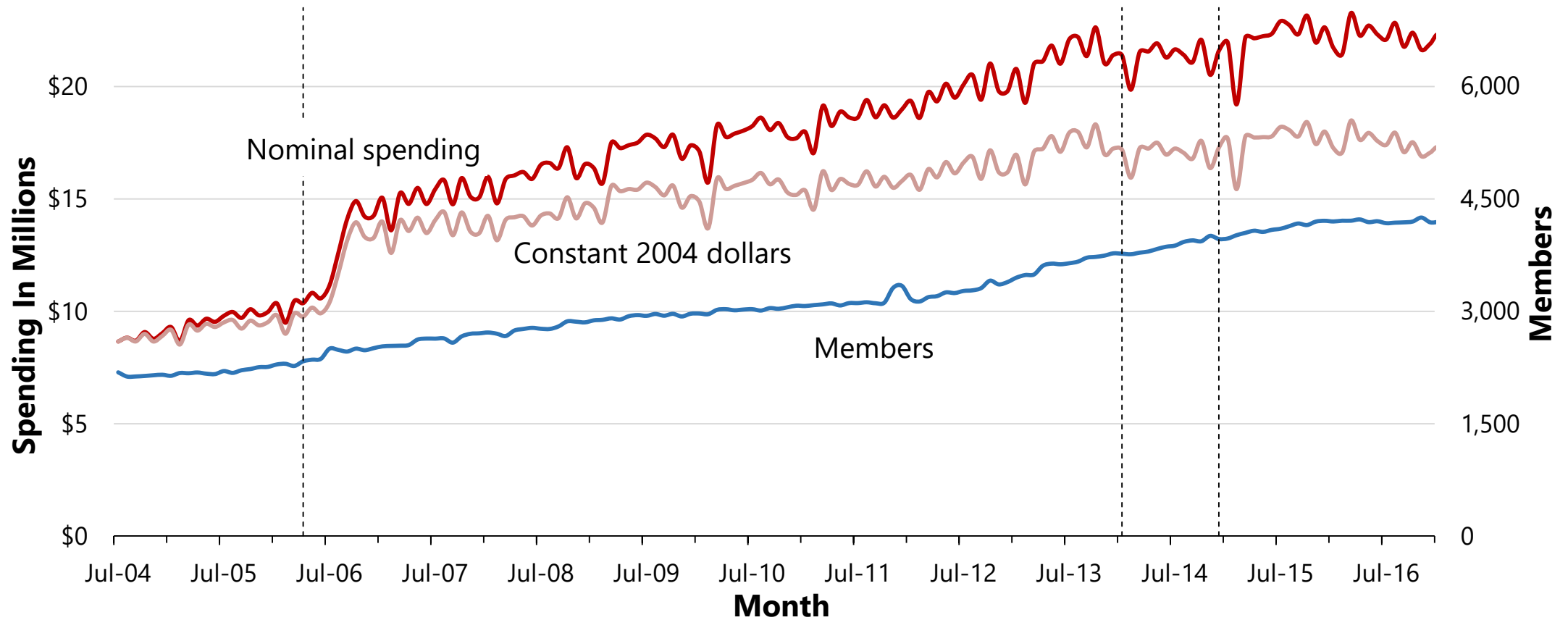


Monthly Spending Per Member

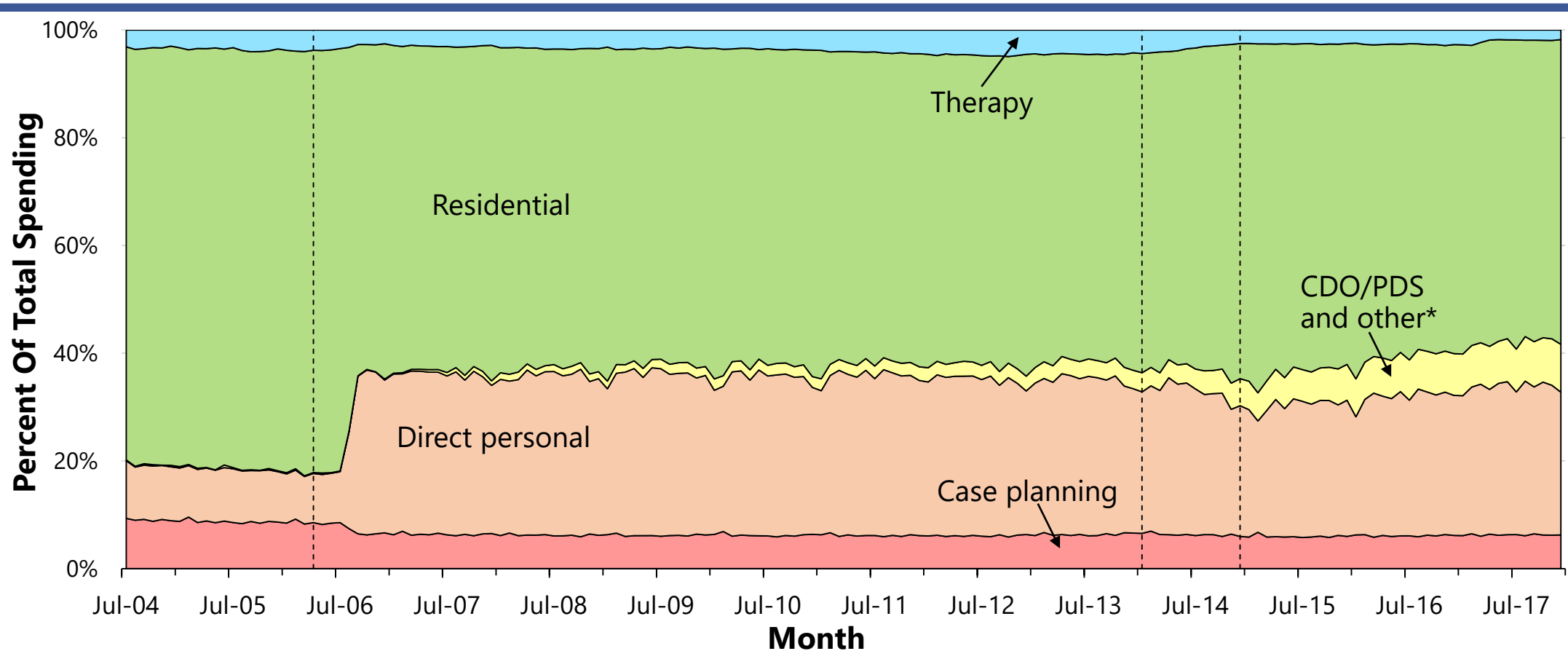




Total SCL Spending And Members



Relative Spending—All Types Of Service



*Consumer-directed option, participant-directed services, and other services not related to provider rates.



Provider Service Adaptation

Some flexibility to adjust within service array

- Residential staff costs shifted to adult day training
- Provided more units of employment support and community access
- Staffed residences shifted to adult foster homes



State Medicaid Rate Obligations

States need not ensure provider profitability:
A state must ensure that "payments are consistent with efficiency, economy, and quality of care and are sufficient to enlist enough providers"
—42 USC sec. 1396a(a)30(A)