

# Storm Shelter Preparedness

Safety for KENTUCKY



# \*\*Advocating for individual Storm Shelters\*\*

- Honorable Members of the Veterans, Military Affairs, and Public Protection:

Thank you for the opportunity to address you today. My name is Billy Phelps, and I serve as the Mayor of the City of Morgantown, I'm a former United States Marine and a 25 year police officer, I retired at the position of Chief of Police.

I was elected to my Mayors position in 2015 and I'm now serving my third term.

I'm here to discuss a critical issue impacting the safety and well being of our residents: the need for individual storm shelters in the wake of increasing tornado activity in Western Kentucky

## \*\*The Problem\*\*

- As you are aware, Western Kentucky has experienced a significant uptick in tornadoes over recent years. This trend poses a substantial risk to our rural communities, where timely access to mass storm shelters is often impractical. (no one is going to get in their car and drive 2+ miles to get into a storm shelter during a storm)
- Currently, the state provides funding for mass storm shelters. While these facilities are invaluable in urban settings, they fall short in rural areas due to the vast distances between homes and shelters.  
(and as you know over 80 % of the state of Kentucky is rural areas)

On average, a mass storm shelter accommodating 100 people costs approximately \$250,000 (my city has been approved for one as we speak)

The City paying 13% (\$32,370.)



## \*\* Cost Effectiveness \*\*

- The cost per person for mass shelters is \$2,500
- In contrast, individual storm shelters can be built for a fraction of this cost, often less than \$10,000 per unit that holds up to 8 to 10 people.  
this brings the cost down from \$2500 per person to \$1000
- Giving a much broader area of coverage throughout our cities and counties

# \*\* Partnership Options \*\*

7/22/24, 2:17 PM

Small Family Storm Shelter - Safe Sheds, Inc.



Request A Quote!

## Affordable EF5 Protection for Small Spaces

This residential storm shelter is perfect for small families or homes without a lot of yard space. Built to the same standards as our larger model, this shelter meets all the FEMA (2015) specifications to protect your family in EF5 tornadoes. And it's budget-friendly, too! With a 6" concrete floor, you can set this 5.5 ton storm shelter directly on the ground or a gravel pad, saving you hundreds of dollars. Because it's outside your home or garage, you don't lose valuable room for your car and everything else you need to keep protected.

**\$4,800.00 - 36 sq. ft. for 6 people**

### This Safe Shed Shelter Includes:

- Steel-reinforced seamless concrete walls, roof, and floor ([see how it's built](#))
- 6" floor and 4" walls and roof
- 3/16" thick steel door with 3 locking points

<https://www.safesheds.com/smallfamilystormshelter.html>

1/5

7/22/24, 2:17 PM

Small Family Storm Shelter - Safe Sheds, Inc.



headroom

- 1 LED motion sensing automatic interior light
- Quickly **installs** on bare ground or gravel pad - no expensive concrete pad needed!
- **Meets all FEMA 361/320 and ICC 500 requirements** to provide "near absolute" protection during EF5 tornadoes (250 mph winds)
- Delivery & Anchors priced separately - please request a **Custom Quote** for a no-obligation price

### Anchoring Your Storm Shelter

We price our shelter anchors separately because the type of anchor we recommend depends on the surface you'll be setting your shelter on at your home. Please visit our ["Anchoring"](#) page for more information, pricing, and photos!

### Options For Your Shelter

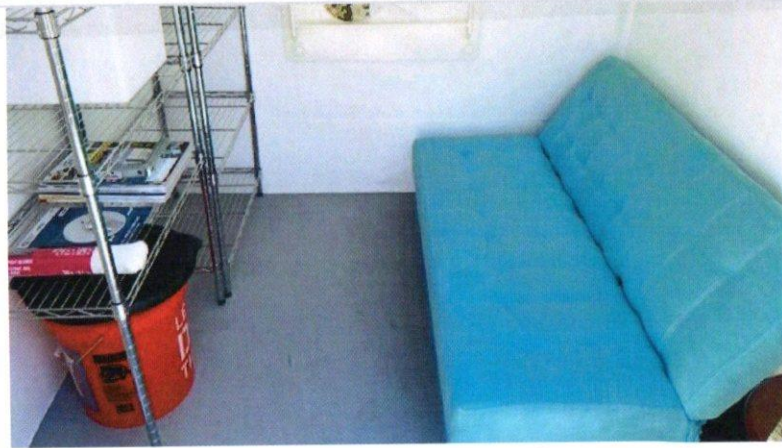
<https://www.safesheds.com/smallfamilystormshelter.html>

2/5

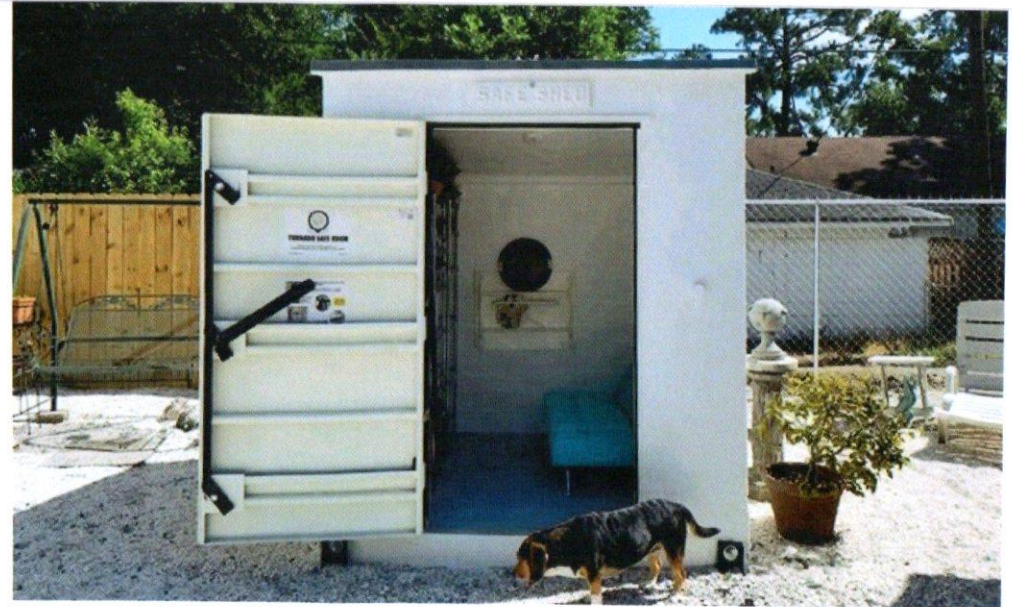


7/22/24, 2:17 PM

Small Family Storm Shelter - Safe Sheds, Inc.



The 6' x 6' shelter is perfect for a small family...large enough to comfortably hold emergency supplies and keep you comfortable. But small enough to fit snugly into your yard.



# \*\* 2-16 people Shelters \*\*

## Our Best Selling Storm Shelter

*This is our most popular family storm shelter!*  
***Stronger, Cheaper, and Easier To Install Than Steel!***

Request A Quote!

Dollar-for-dollar, our 80 sq. ft. residential storm shelter is the most affordable choice for your family!

**\$6,500 for up to 16 people**

- Steel reinforced concrete storm shelter with 6" thick floor and 4" thick walls and roof ([see how it's made](#));
- 8' x 10', weighing in at 24,000 lbs. (12 tons);
- Stucco exterior with your choice of [42 paint colors](#) to mix and match;





- LED motion-sensing lights to make entry at night easy and comforting;
- 6' 8" of headroom for your comfort;
- **Spacious interior** so you can add beds, recliners, pet cages, emergency supplies, or shelving;
- Low threshold and wide door for easy entry with mobility scooters, wheelchairs, or walkers;
- **Installs quickly** with no need for additional concrete pad, saving you money.
- Meets FEMA Pub. 320 (2015)

## Anchoring Your Storm Shelter

We price our shelter anchors separately because the type of anchor we recommend depends on the surface you'll be setting your shelter on at your home. Visit our

## Options For Your Shelter

Our "**Options**" make your shelter perfect for your family's emergency use. Add an Emergency Escape Opening or a High Security Padlock to secure the supplies and equipment you store in your shelter.

2025 BE SAFE STORM SHELTERS, INC. ALL RIGHTS RESERVED.



+1 (405) 413-9287

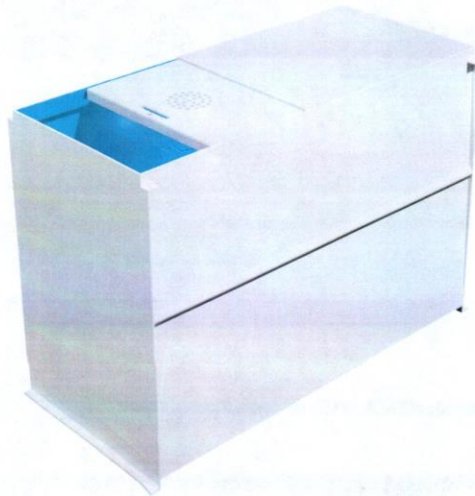
(<https://besafestormshelters.com/>)



OUR SHELTERS

## GARAGE BELOW GROUND

\*TRAVEL FEE DISCLAIMER : WE COVER A 50 MILE RADIUS AROUND OKC. AFTER 50 MILES OUTSIDE OF OKC, WE CHARGE \$8/MILE\*



### Shelter Features

- ✓ STEEL CONSTRUCTION
- ✓ 1/4" STEEL PLATE DOORS
- ✓ EASY SLIDING DOOR DESIGN
- ✓ RUST-RESISTANT COATING
- ✓ COMMERCIAL GRADE WEATHERPROOFING
- ✓ BUILT-IN STEPS AND SEATING
- ✓ BUILT-IN VENTILATION

✓ MEETS OR EXCEEDS FEMA GUIDELINES

### Shelter Price & Specs

| Size   | Price          | Dimensions          | People |
|--------|----------------|---------------------|--------|
| Small  | <b>\$3,900</b> | 3'5"W x 7'L x 4'5"H | 8      |
| Medium | <b>\$4,700</b> | 5'W x 7'L x 5'5"H   | 12     |
| Large  | <b>\$5,700</b> | 5'W x 8'L x 5'5"H   | 13     |
| Jumbo  | <b>\$7,500</b> | 5'5"W x 9'L x 6'2"H | 17     |

**PURCHASE THIS SHELTER**  
(<https://Besafestormshelters.Com/Garage-Below-Ground-Form/>)

### Shelter Description

OUR TORNADO SHELTER DESIGNS HAVE THE REGISTERED PROFESSIONAL ENGINEER SEAL AND MEET OR EXCEED FEMA GUIDELINES.







## Underground Fiberglass Tornado Shelters

Below you will find the finest fiberglass storm shelters available. With models ranging from 4 people to 20 there is the right size for your needs and your budget.

Our shelters have a lifetime warranty and we stand behind them strongly.

[LIFETIME WARRANTY FROM MANUFACTURER](#) >

PRICES INCLUDE INSTALLING

**4 Person Tornado Shelter**



SS4  
Capacity 4 People  
48"Lx60"Wx62"H  
\$5995.00 Installed Plus Tax and Travel

**6 Person Tornado Shelter**



SS6  
Capacity 6 People  
81"Lx60"Wx58"H  
\$6695.00 Installed Plus Tax and Travel

**8 Person Tornado Shelter**



SS8  
Capacity 8 People  
80"Lx65"Wx73"H  
\$7895.00 Installed Plus Tax and Travel

**8 Person Slope Shelter**



SS8 Slope  
Capacity 8 People  
102"Lx78"Wx76"H  
\$7695.00 Installed Plus Tax and Travel

**12 Person Tornado Shelter**

**20 Person Tornado Shelter**



7/22/24, 2:09 PM



UnderGround PRICING



SS12

Capacity 12 People

98"Lx79"Wx72"H

\$8895.00 Installed Plus Tax and Travel

SS20

Capacity 16 People

178"Lx79"Wx70"H

\$13995.00 Installed Plus Tax and Travel

COPYRIGHT © 2020 KENTUCKY STORM SHELTERS LLC - ALL RIGHTS  
RESERVED. [HTTPS://WEBSITES.GODADDY.COM/UNDERGROUND-1RVED](https://websites.godaddy.com/underground-1rved).  
POWERED BY GODADDY WEBSITE BUILDER



## Strong Secure Heavy Built Steel Saferooms

SAFEROOM PRICING INCLUDES INSTALLATION

4X4

4X6

7/22/24, 2:08 PM



4'x4' Standard Saferoom  
79" Tall 26" Door  
3/16" Steel Skin and 2x2 Steel Reinforced  
\$5995 Installed Plus Tax and Travel

**4x8**

SafeRooms PRICING



4'x6' Standard Saferoom  
79" Tall 32" Door  
3/16" Steel Skin and 2x2 Steel Reinforced  
\$6695 Installed Plus Tax and Travel

**5x8**



7/22/24, 2:08 PM



4'x8' Standard Saferoom  
79" Tall 32" Door  
3/16" Steel Skin and 2x2 Steel Reinforced  
\$7695 Installed Plus Tax and Travel

SafeRooms PRICING



5'x8' Standard Saferoom  
79" Tall 36" Door  
3/16" Steel Skin and 2x2 Steel Reinforced  
\$8495 Installed Plus Tax and Travel

7/22/24, 2:08 PM

6x8

SafeRooms PRICING

Custom Build



6'x8' Standard Saferoom  
79" Tall 36" Door  
3/16" Steel Skin and 2x2 Steel Reinforced  
\$9895 Installed Plus Tax and Travel



Custom Interior or Exterior Saferoom.  
We can build to your needs just ask for a quote and lets make it happen.  
Most custom shelters take 4 plus weeks.  
Custom shelters require 1/2 down payment

COPYRIGHT © 2020 KENTUCKY STORM SHELTERS LLC - ALL RIGHTS  
RESEHTTPTS://WEBSITES.GODADDY.COM/UNDERGROUND-1RVED.  
POWERED BY GODADDY WEBSITE BUILDER

<https://kentuckystormshelters.com/saferooms-pricing>

4/5



## \*\*Community Benefits\*\*

- Individual storm shelters strengthen neighborhood resilience, allowing neighbors to support each other during emergencies.
- These shelters can be installed in a variety of locations, including backyards and basements, making them highly adaptable to different housing situations.
- Giving apartment owners the opportunity to build and give tenants safety within neighborhood areas.
- The increased proximity of shelters can reduce panic and ensure that more residents are protected during severe weather events

## \*\* PILOT PROGRAM PROPOSAL \*\*

- I'm not requesting additional funding from the state. Instead, I propose converting one mass storm shelter project into a pilot program for individual storm shelters.
- This pilot program will serve as a proof of concept, demonstrating the feasibility, cost savings and enhanced safety that individual shelters can provide. It will also offer more shelters to the rule areas, small cities and county areas than 1 mass shelter.
- For the protection of the State funding, I would like to see the home owner have a financial investment, in the benefit of having a Shelter

## \*\*Community Shelter Partners\*\*

- We want to protect the investment of our state, We recommend that the home/property owner invest up to \$5,000 not to exceed \$10,000 per state sponsored shelter (half price of shelter)
- The state sponsored shelter must hold a minimum of 4 people.
- The home/property owner must sign an agreement allowing neighbors to use state sponsored shelter during bad weather emergencies
- On completion of the shelter, the local ADD and Emergency Management Director for the County will inspect before reimbursement by the state

## \*\*The Price of Safety\*\*

- $\$250,000 \div 100 \text{ people} = \$2500 \text{ per person} = 1 \text{ shelter}$
- $\$250,000 \div 10,000 \text{ per shelter} = 25 \text{ shelters}$
- $25 \times 8 \text{ people per shelter} = 200 \text{ people}$
  
- $\$250,000 - 13\% = \$3237 = \$217600 \text{ per shelter}$
- $\$217600 \div 2 \text{ (home owner paying half)} = \$108,815 \text{ state}$
- $\$250,000 - \$108,815 = \text{savings of } (\$141,185)$



## \*\* Conclusion \*\*

- Honorable Members, the safety of our rural residents is paramount to the quality of life for our citizens
- By converting one mass storm shelter project into a pilot program for individual storm shelters, we can protect more lives make better use of our resources, and set precedent for other rural communities across the state
- This program is already in use by other states to allow individuals to build community/private owned shelters for reimbursement
- I urge you to consider this proposal and a step towards enhancing the safety and resilience of Kentucky.

**\*\*Questions\*\***