

KY SERV'S
STATEWIDE
EMERGENCY
RESPONDER
VOICE
SYSTEM



TEAM
KENTUCKY

JUSTICE AND
PUBLIC SAFETY CABINET



Subscriber
Equipment



System Cores



Console Positions
at 16 Posts



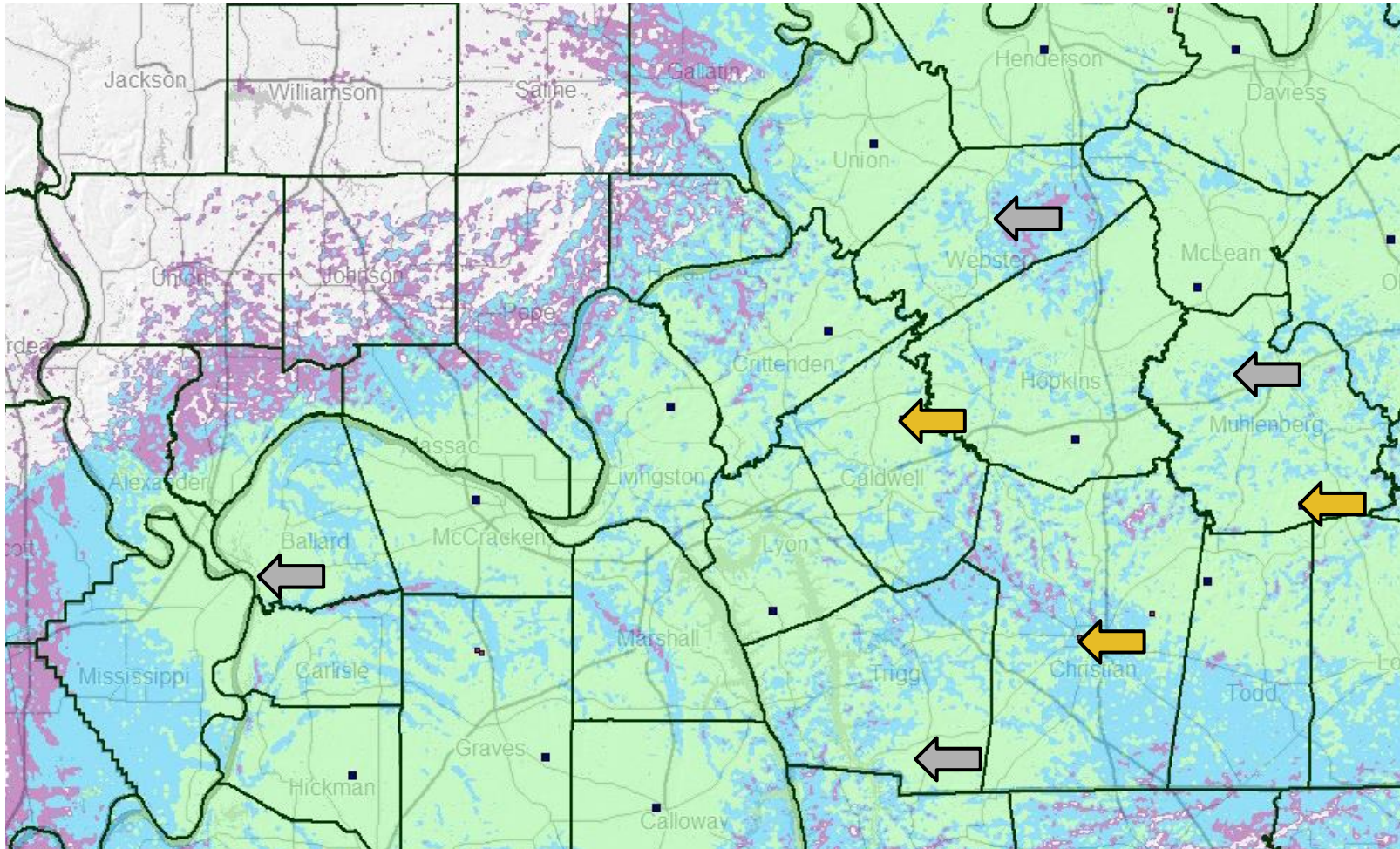
Infrastructure
Buildout, Posts 1
& 2, (Phase 1-C)



PHASE I

\$35,100,000.00

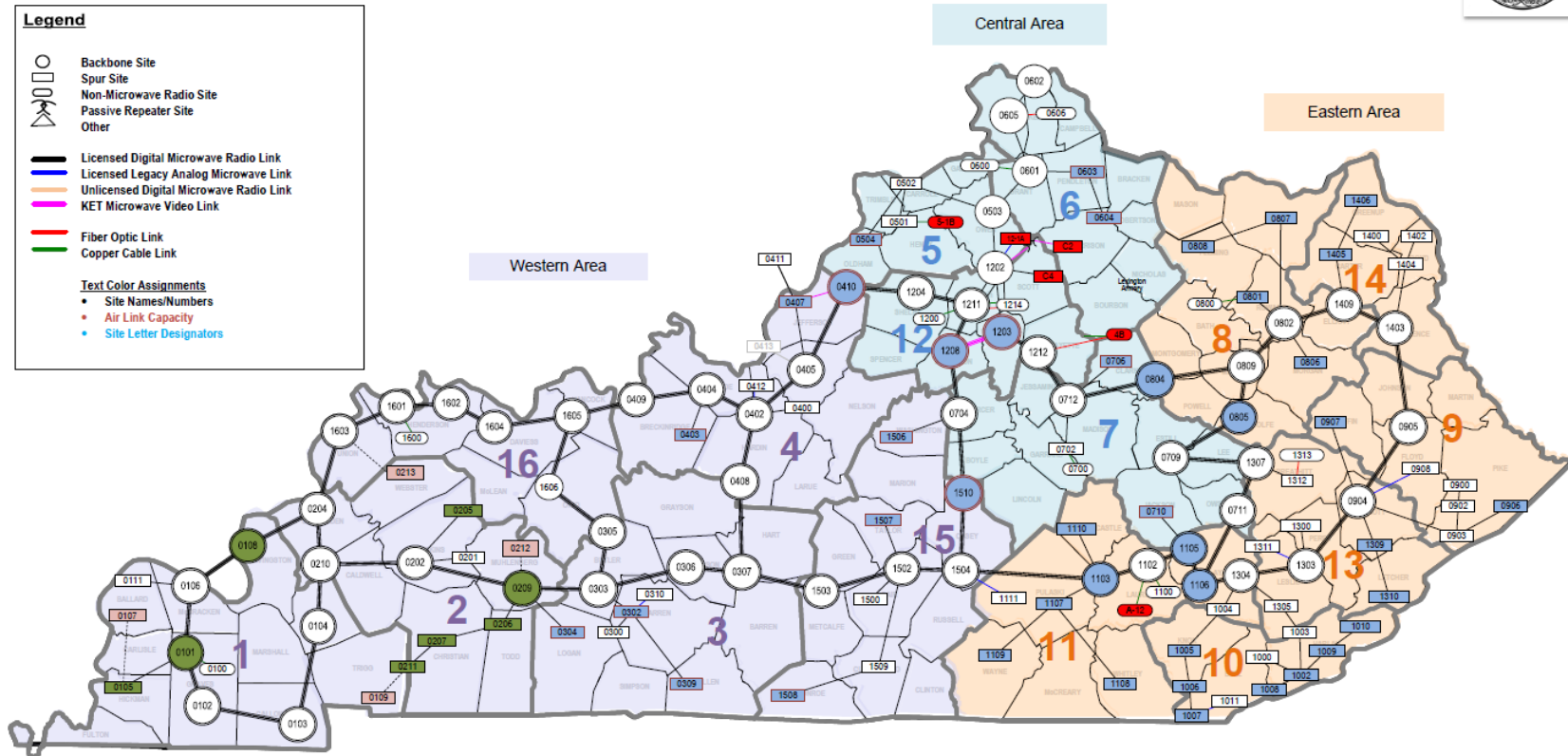
PHASE I COVERAGE TESTING - 99.8%



IDENTIFIED CHALLENGES

- Tower Inspections
- Dilapidated Shelters
- DC Power Plants
- Generators
- Microwave Equipment
- Networking Equipment
- Footprint
- Expiring Leases
- Construction Timeline
- Sustainability

Kentucky Emergency Warning System



New
Infrastructure 48
Existing Sites

Obtain and
Construct 17
Additional Sites

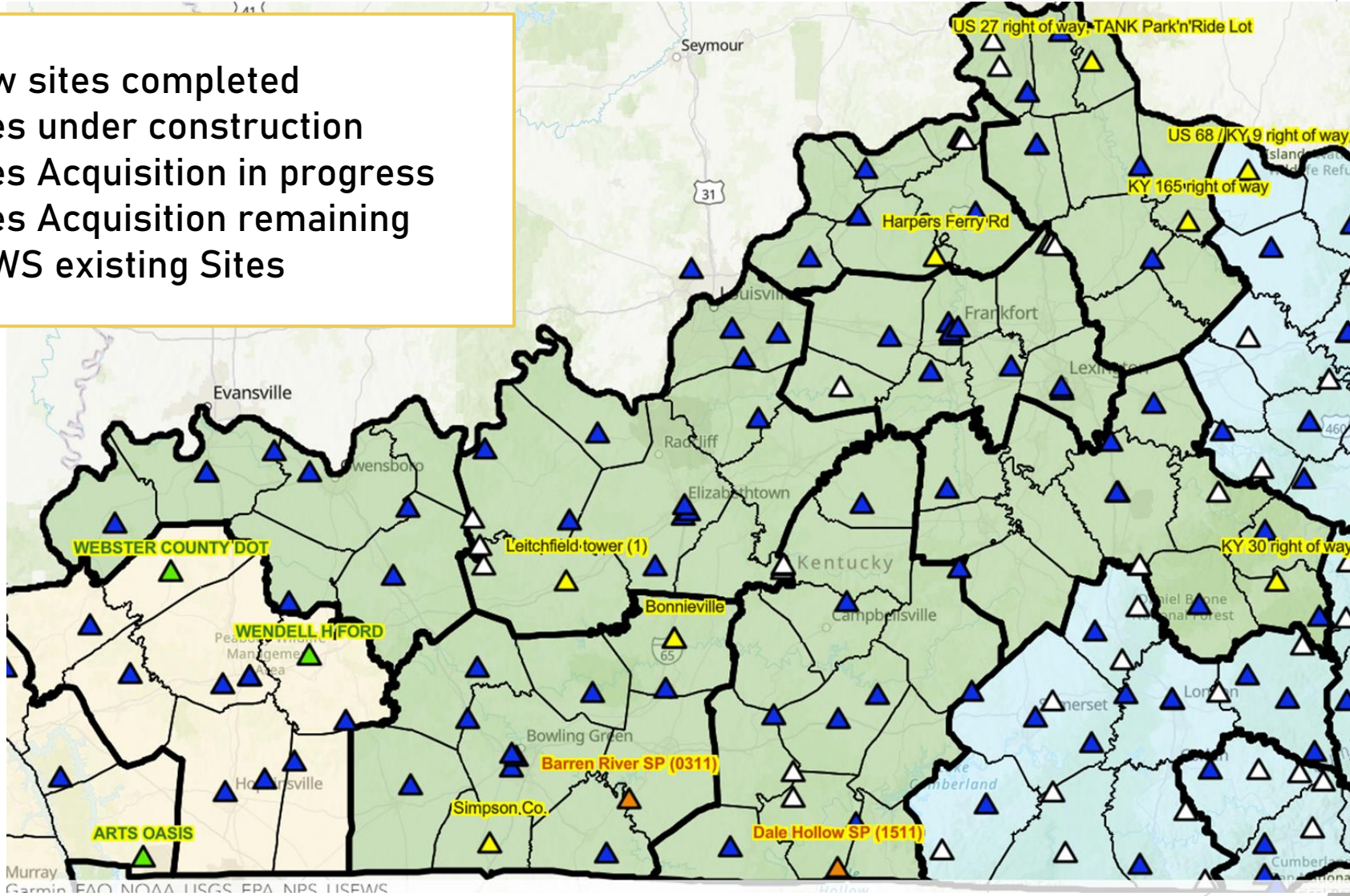
PHASE II

\$52,450,000.00


PHASE II



- New sites completed
- Sites under construction
- Sites Acquisition in progress
- Sites Acquisition remaining
- KEWS existing Sites



KEWS Shelter
Replacement 

KEWS
Microwave and
Router
Replacements 

Replace
infrastructure at 30
existing sites 

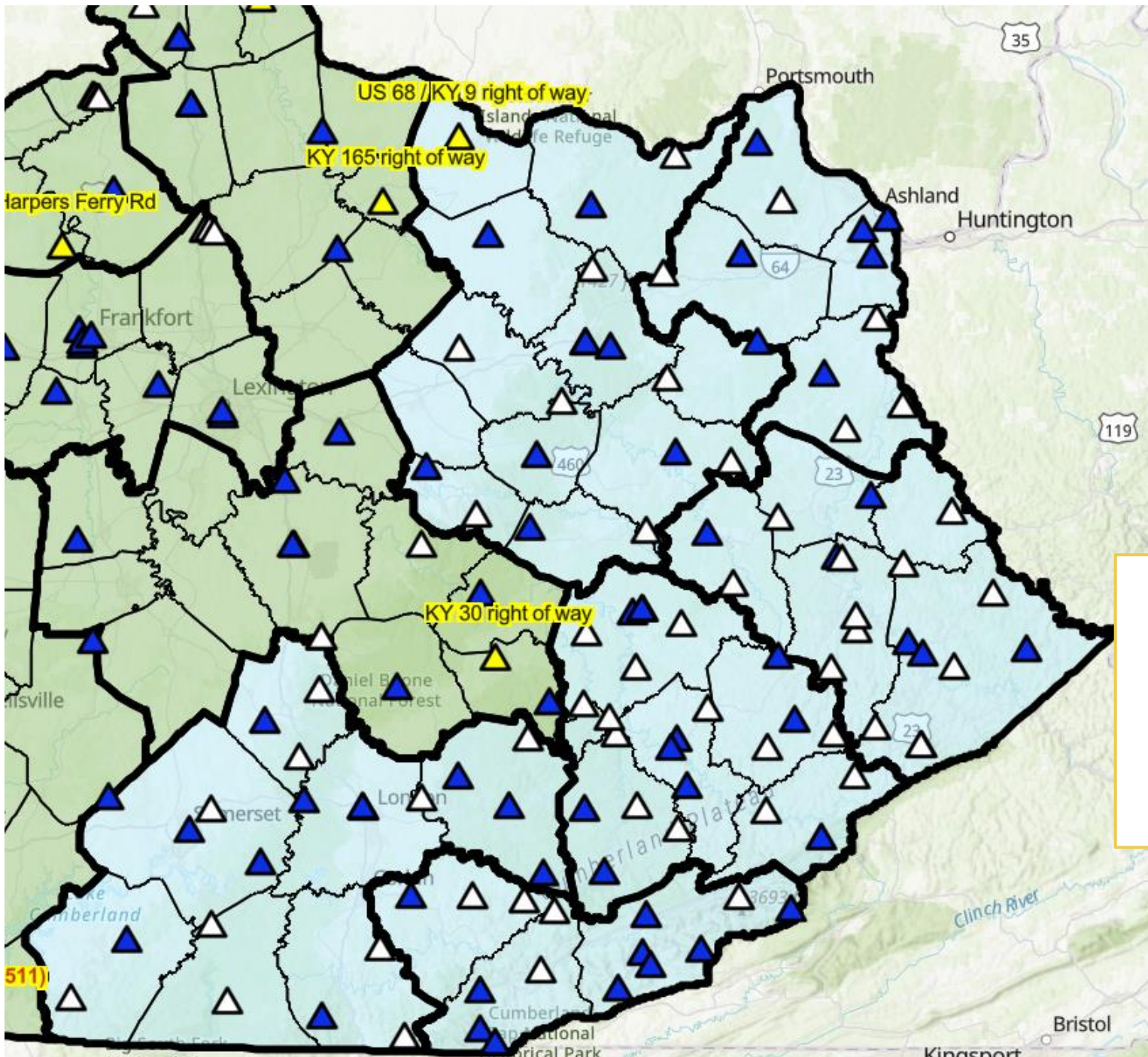
Obtain and
construct 35
additional sites 

PHASE III
\$128,809,000






TEAM
KENTUCKY

JUSTICE AND
PUBLIC SAFETY CABINET





PHASE III

-  New sites completed
-  Sites under construction
-  Sites Acquisition in progress
-  Sites Acquisition remaining
-  KEWS existing Sites



OVERCOMING ECONOMIC CHALLENGES

\$47.9M in additional funding was awarded in HB6 for work anticipated in the 2024-2026 biennium under Phase III

- **Significantly increased costs of tower equipment compared to Phase I and II**
- **Increased cost of construction labor and materials compared to Phase II**
- **Challenging topography and access impacting construction in Eastern Kentucky**

The project will be reassessed and estimated for the remainder of Phase III construction to be completed in a future biennium.



KENTUCKY STATE POLICE



COMMUNICATIONS BRANCH

Brandon Marshall

brandon.marshall@ky.gov

502-229-1090

QUESTIONS/DISCUSSION

TEAM
KENTUCKY

JUSTICE AND
PUBLIC SAFETY CABINET

