

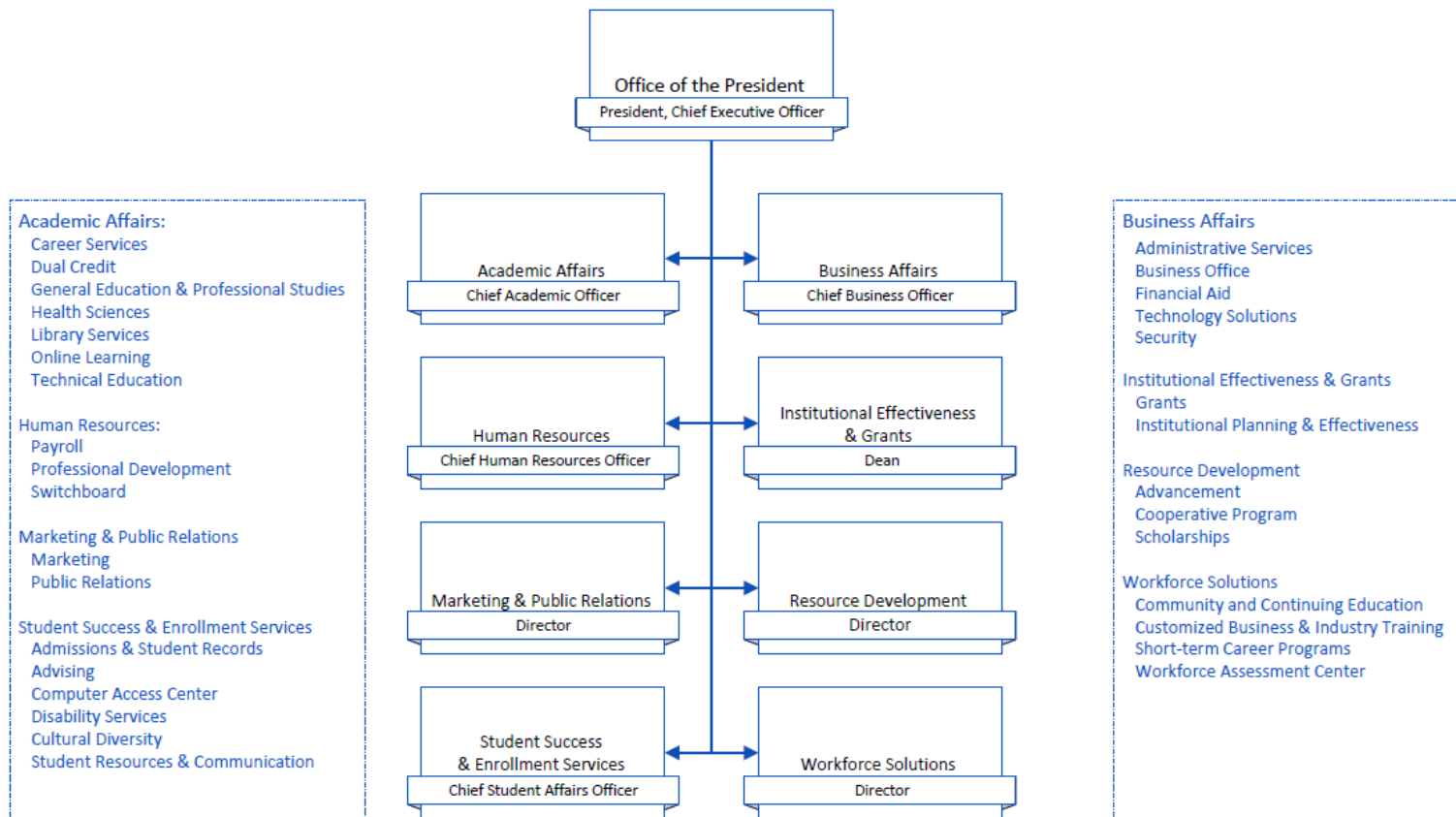
# Kentucky Community and Technical College System (KCTCS)

## Appendix O – Organizational Charts

(from question 1: 1.a.ii and 1.b.i)

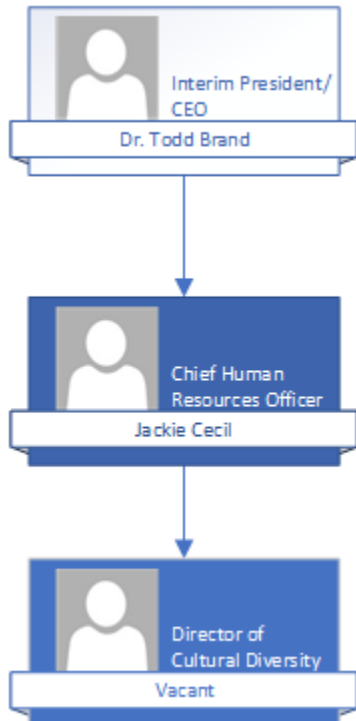
### Ashland

#### Ashland Community & Technical College



## Kentucky Community and Technical College System (KCTCS)

### Big Sandy



### Bluegrass

Organizational Charts:

- **Erin Howard**  
Associate Dean, Global Learning
  - **Global Center**
  - **Global Partnerships & Programming**
  - **Ashley McQueary**  
International Student Services

## Kentucky Community and Technical College System (KCTCS)

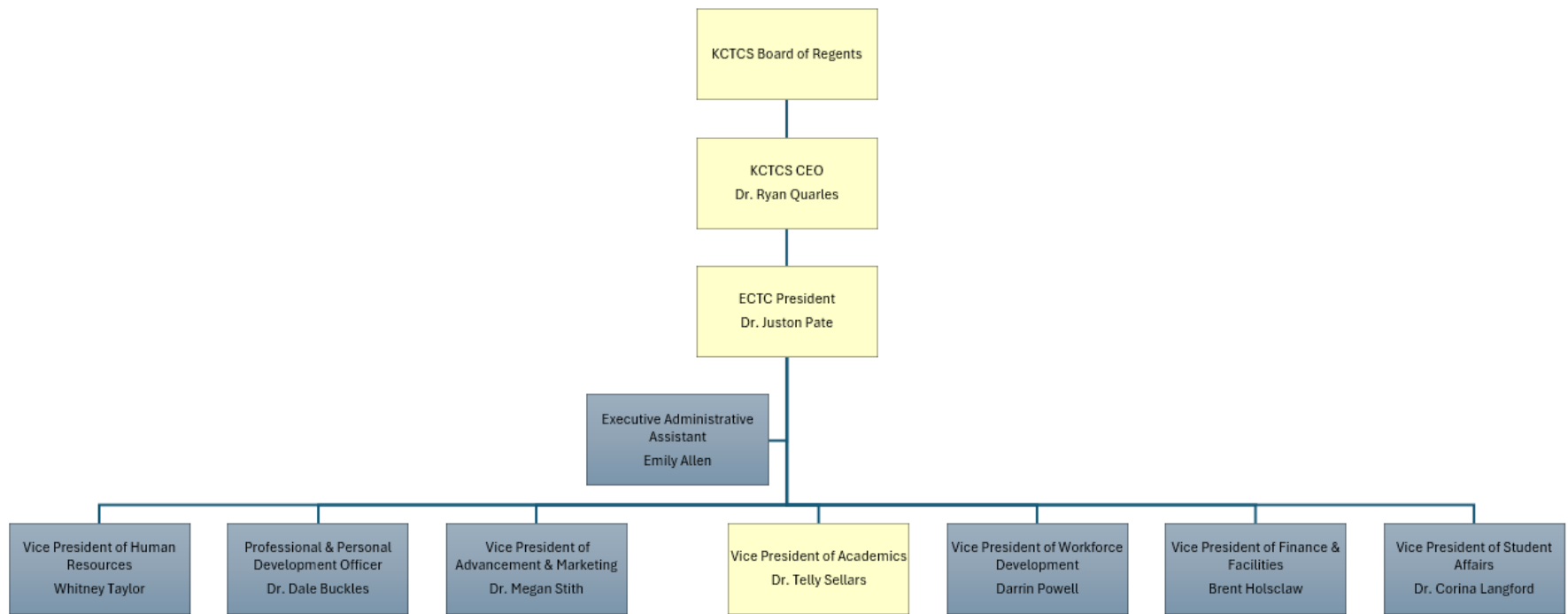
- **Eddy Andrade**  
Immigrant Career Services
- **Laura Puente**  
Migrant Education
- **Theresa Weio**  
Immigrant and Refugee Enrollment Services
- **Abigail Edwards**  
Community College Initiative Program
- **Vacant**  
Refugee Career Pathways
  
- **Dr. Carlous B. Yates**  
Vice President of Culture and Engagement
  - **Kauai Thurman**  
Director of African American Student Initiatives
  - **Peter Mottas**  
Coordinator of LGBTQIA Services
  - **Vacant**  
Coordinator of Academic Diversity and Inclusion
  - **Ruth Gonzalez Jimenez**  
Director of LatinX Services
  - **Anita Nelums**  
Director of Counseling Services
  - **Vacant**  
Director of Student Accessibility Services
  
- **Shelbie Huggle**  
Associate Vice President of Public Relations, Marketing, and Admissions
  - **Melissa Terry**  
Director of Admissions
  - **Katelynn Ralston**

# Kentucky Community and Technical College System (KCTCS)

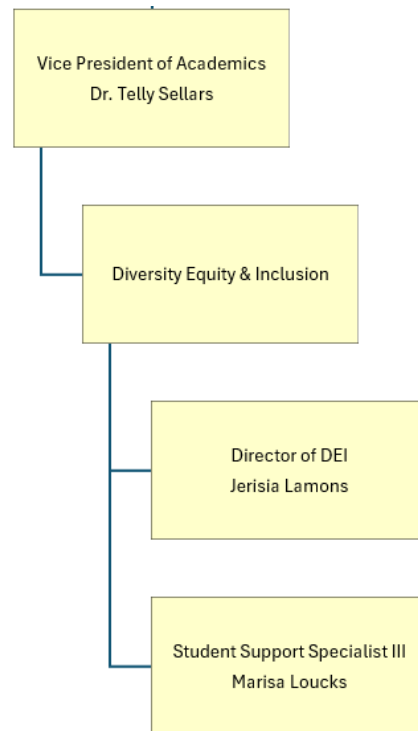
Director of Marketing and Digital Strategies

- **Ally Grzywacz**  
Assistant Director of Admissions for Recruitment
- **Shanise Edwards**  
African American Outreach Coordinator
- **Jazmine Rivera**  
Latinx Outreach Coordinator
- **Brenna Taulbee**  
Admissions Counselor
- **Cooper Gibson**  
Visitor Center Coordinator
- **Ethan Sturgill**  
Admissions Counselor

## Elizabethtown

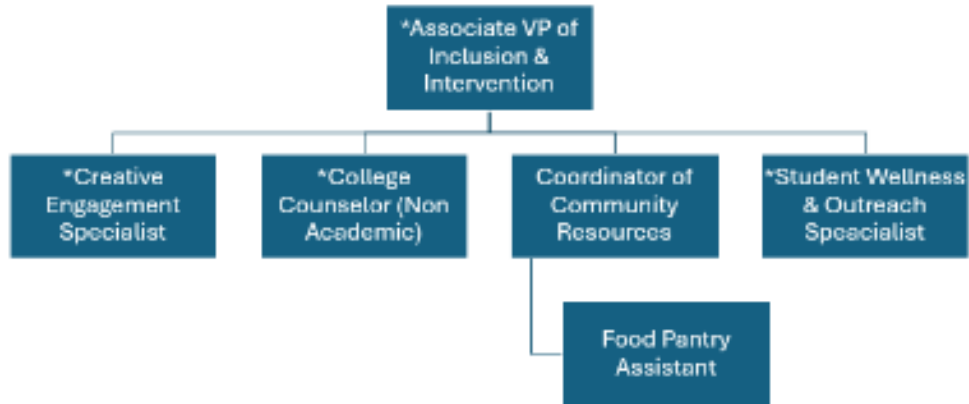


# Kentucky Community and Technical College System (KCTCS)



# Kentucky Community and Technical College System (KCTCS)

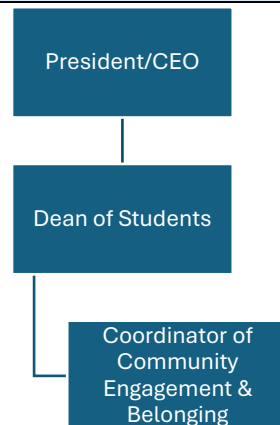
## Gateway



## Hazard

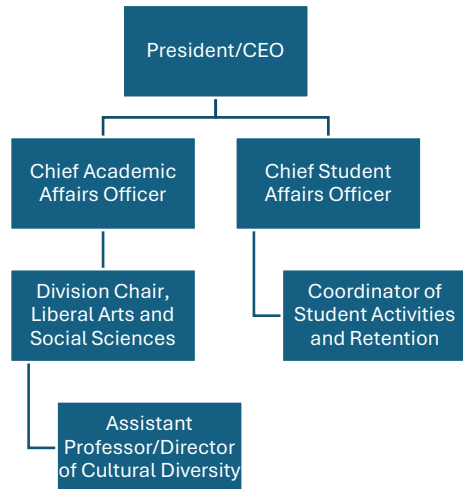
N/A - Hazard does not have an employee/office that meets the criteria.

## Henderson



# Kentucky Community and Technical College System (KCTCS)

## Hopkinsville



## Jefferson

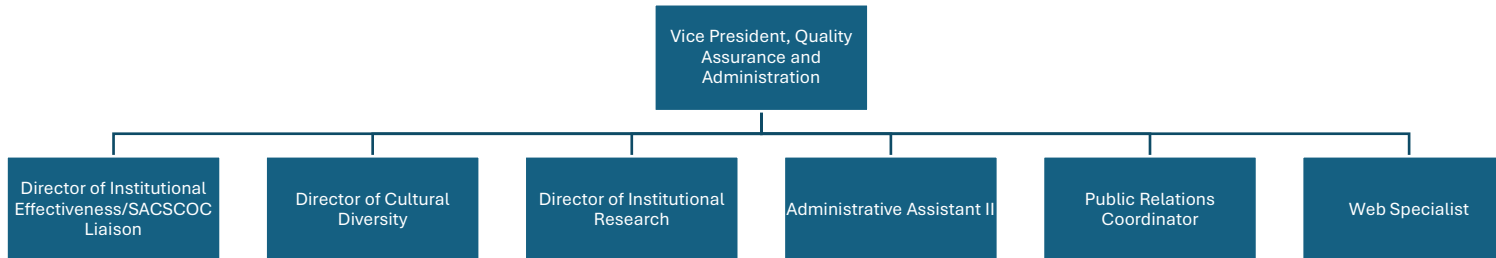
Student Affairs  
Office of Belonging and Community Engagement



# Kentucky Community and Technical College System (KCTCS)

## Madisonville

### Madisonville Quality Assurance and Administration



## Maysville

### Organizational Chart:

KCTCS President- Dr. Ryan Quarles

MCTC President- Dr. Laura McCullough

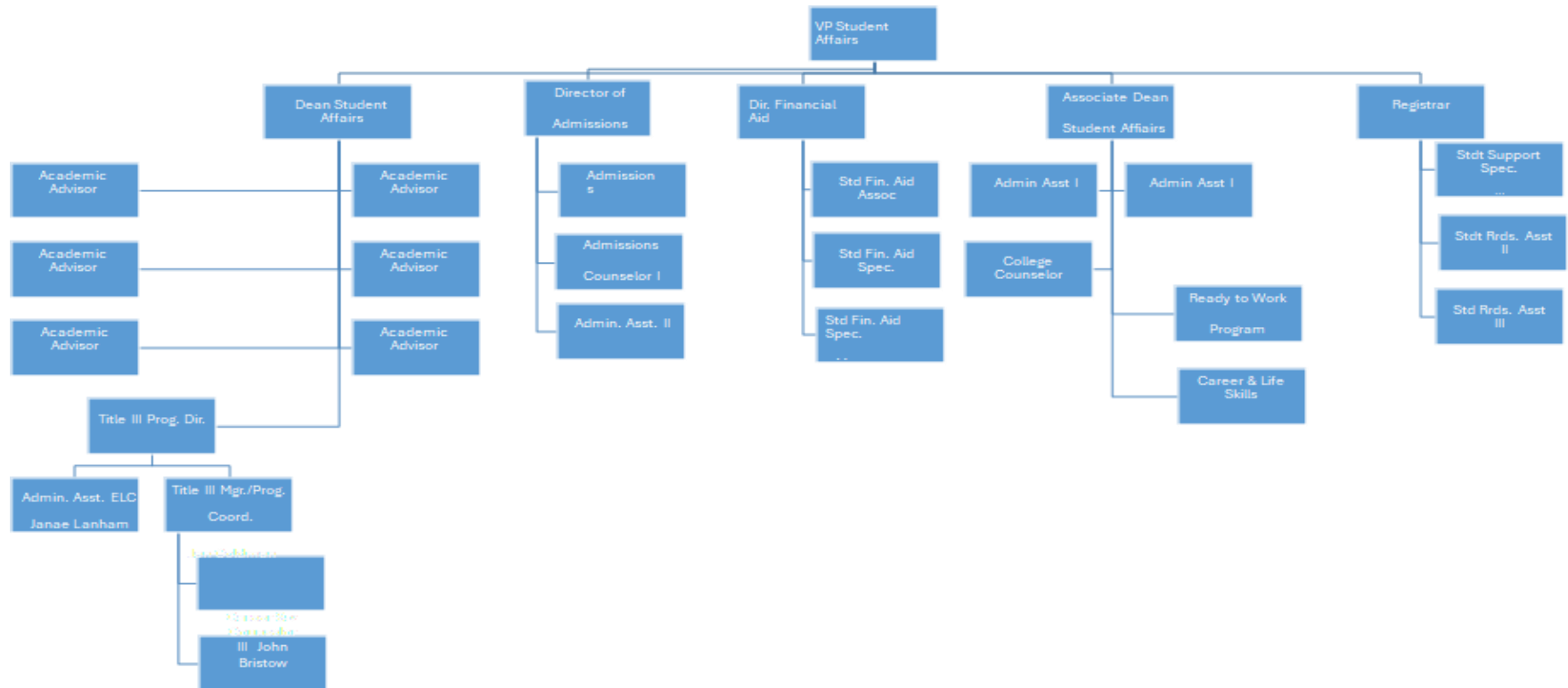
Director of DEI- Millicent Harding-Thomas



# Kentucky Community and Technical College System (KCTCS)

## Owensboro

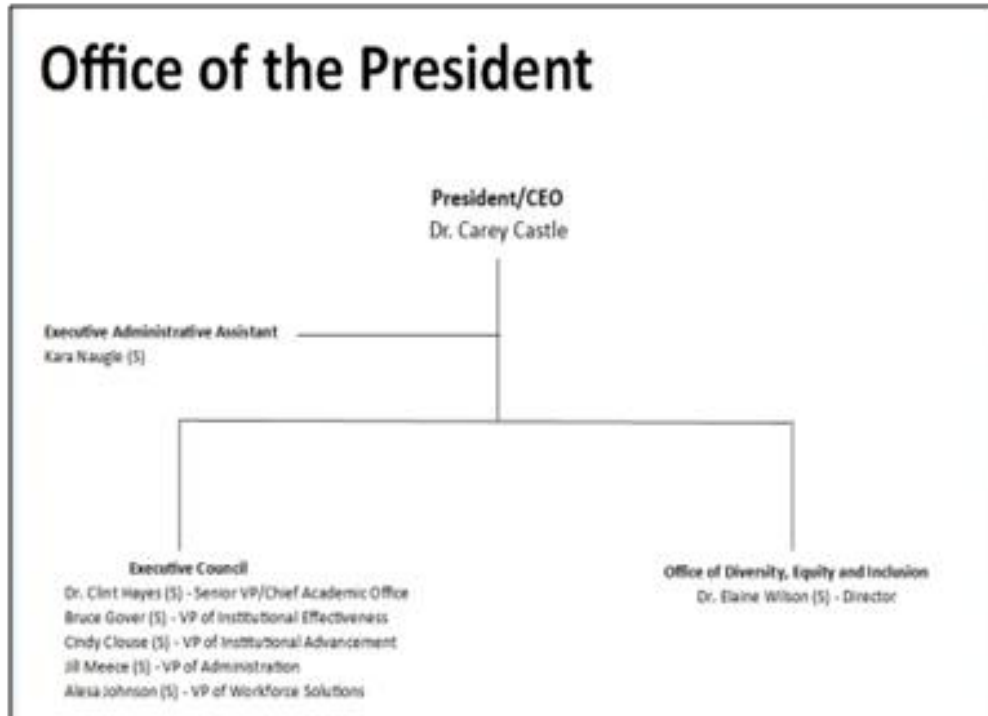
The Dean of Student Affairs provides leadership for a variety of student support services, including cultural diversity programs (e.g., Multicultural Student Association):



# Kentucky Community and Technical College System (KCTCS)

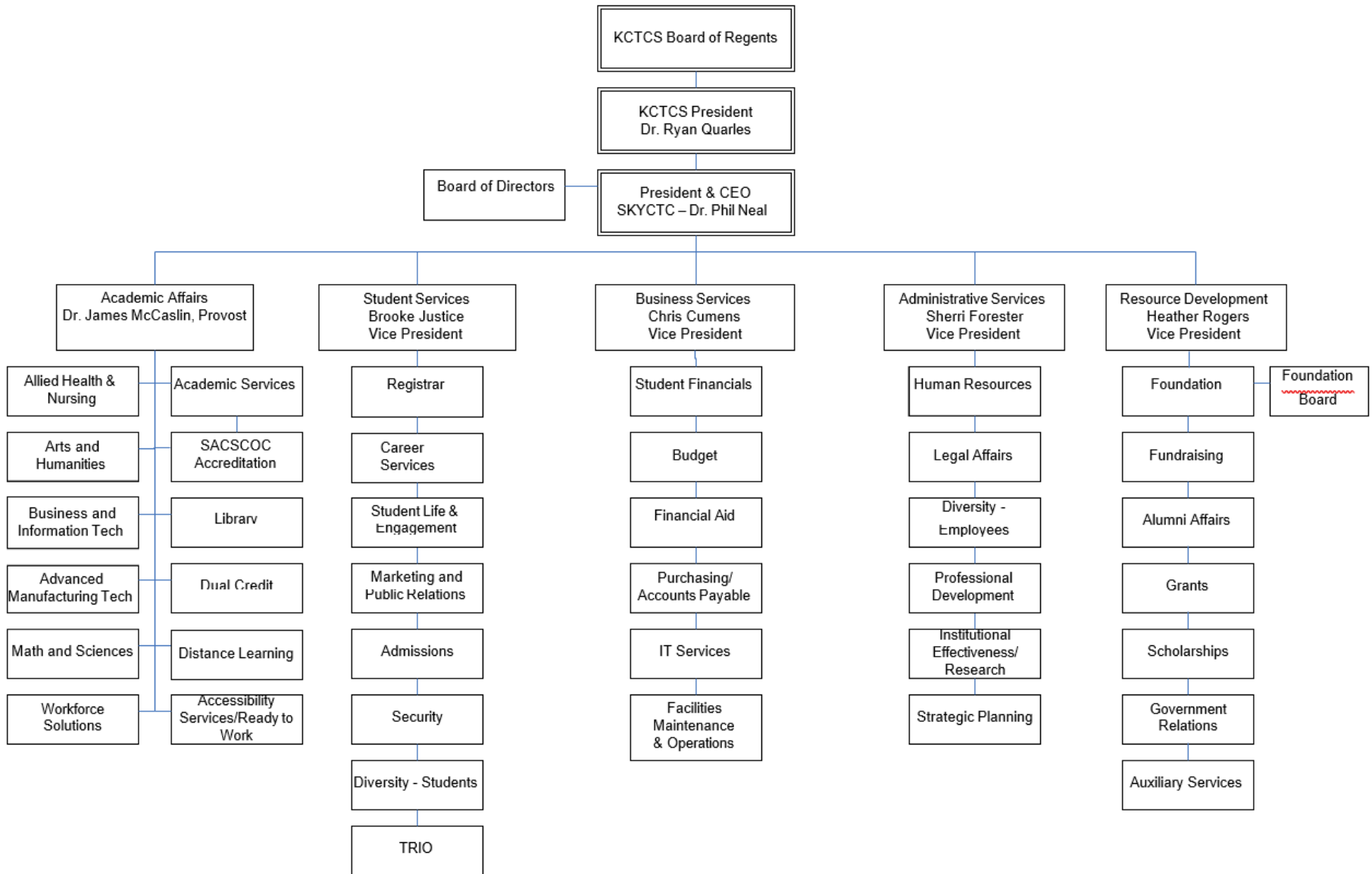
Somerset

## Organizational Chart



# Kentucky Community and Technical College System (KCTCS)

## Southcentral KY



## Kentucky Community and Technical College System (KCTCS)

### Southeast KY

Southeast Kentucky does not employ individuals with a title or description including topics such as diversity, equity, equality, or inclusion. Rather, Southeast Kentucky utilizes a cross-functional team for all institutional reporting, college initiatives, and community programs that involve these issues. Employees who serve on the team (committee) include the following:

- Committee Chair: Ryland Pope, Assistant Professor, Music
- Administrators:
  - Dr. Rebecca Johnson - Vice President of Student Affairs
  - Dr. Rick Mason - Dean of Institutional Effectiveness
  - Peggy Conklin – Dean, Arts and Sciences
- Campus Specific Committee Members:
  - Cumberland Campus – Tiffany Hampton - Development Officer II
  - Knox Co. Campus – Sherry Tinsley – Academic Support Specialist IV
  - Harlan Campus – Chris Washington – IT Associate II
  - Harlan Campus - Erica Farmer – Student Support Specialist III
  - Middlesboro – Jamie Jones – Associate Professor
  - Pineville campus – Emily Abrams - Associate Professor, Director of Clinical Education
  - Whitesburg Campus – Keisha Hunt-Eary – Financial Aid Advisor II

### West Kentucky

West Kentucky does not employ individuals with titles/job descriptions or have offices focusing on diversity, equity, or inclusion. Job responsibilities involving diversity, equity, or inclusion fall under the Dean of Students.

# Kentucky Community and Technical College System (KCTCS)

