

# BULLITT COUNTY PUBLIC SCHOOLS

Community-Based Accountability



# CALLING ALL BCPS COMMUNITY MEMBERS!

We're inviting YOU to join us in  
shaping the future of our schools!

Join Us: [bit.ly/bcps-cba](https://bit.ly/bcps-cba)



## Meet Our CBA Team!



Adrienne Usher  
Co-Lead



Jesse Bacon  
Superintendent



Mike Ekundit  
Co-Lead



Rachel Albright  
OVEC



Tonda Anderson  
Business/Community



James Atkinson  
Business/Community



Kendra Broughton  
Parent



Courtney Burden  
Business/Community  
/Parent



Jacob Carter  
Business/Community



Carmen Coleman  
OVEC



Michelle Cunningham  
Community



Lacey Eckels  
OVEC



Tom Enyeart  
Nonprofit/Business



Barbara Evans  
Parent



Alicia Garcia  
Parent



Peyton Griffie  
Elected Official



Dallas Harshfield  
Business/Community  
/Parent



Gary Hart  
Community



Raquel Hubbard  
Parent



Brittany Joiner  
Principal



Tamra Lakes  
Parent



Kristi Lynch  
Principal



Cathy Medley  
Community



Tara Neuner  
Business/Community  
/Parent



Emily Pierce  
Parent



April Simons  
BCPS Staff



Anita Stump  
Community



Christy Taylor  
Business/Community  
/Parent



April Thrasher  
Parent



Angie Wales  
BCPS Staff



Melissa Webster  
Parent



Amanda Wertz-LaRock  
Parent



Jeremy Willis  
Business/Community  
/Parent

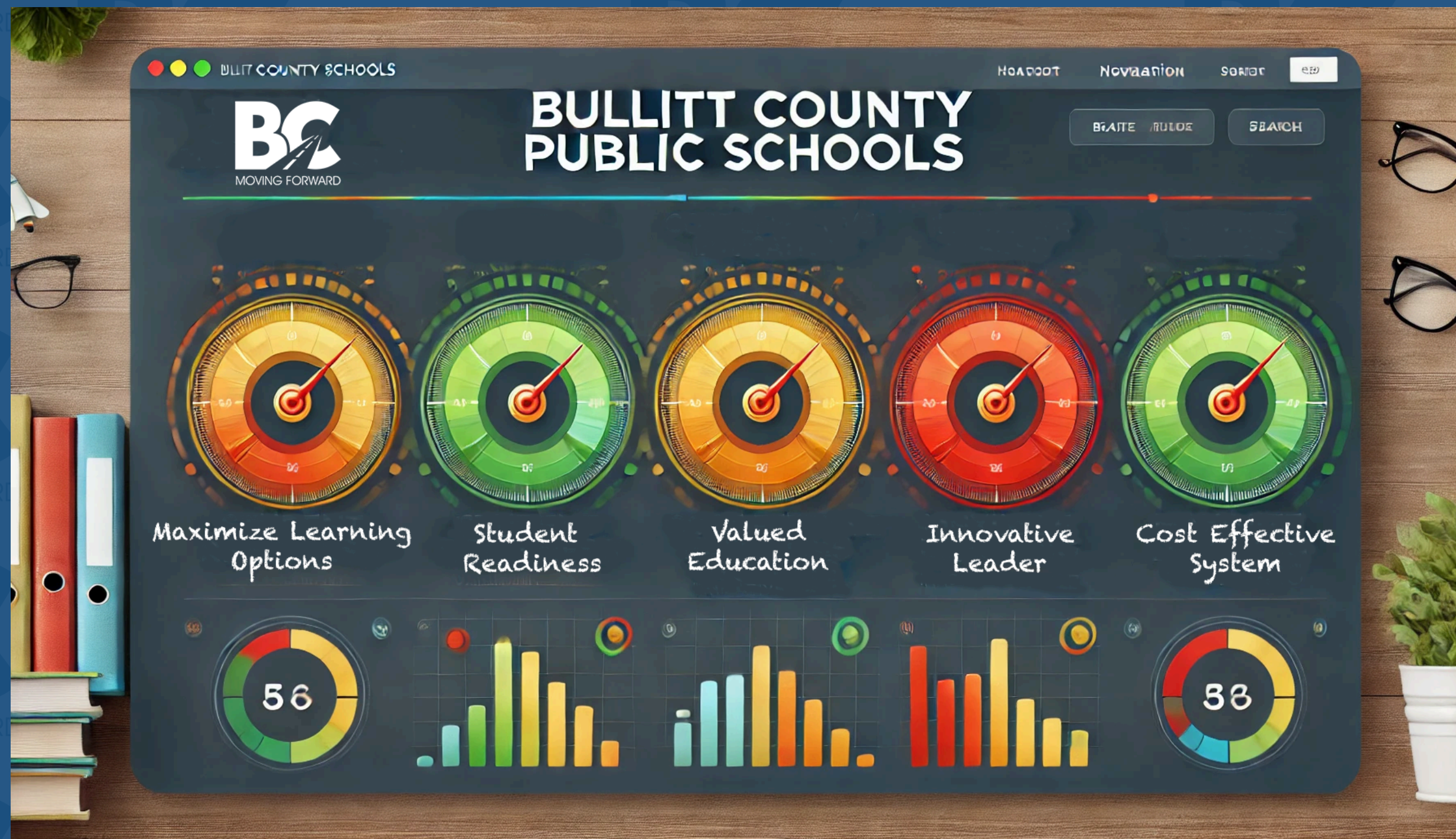


Sara Woodring  
Business/Community  
/Parent

Our mission is to inspire and equip our students to succeed in life.



# End in Mind











## Student Learning

The Student Learning graphic features a graduation cap with a road running through it, symbolizing the journey of learning and achievement. The cap represents the ultimate goal of education—students successfully reaching graduation—while the road signifies the path they take to get there. This visual reinforces BCPS's commitment to providing meaningful learning experiences that guide students forward, equipping them with the knowledge and skills needed for success.



# Student Learning



Learning is a journey, and every student deserves a clear and supported path forward. This pillar represents our commitment to providing high-quality learning experiences, advanced coursework, and the essential skills students need to reach their goals.

## Student Learning Benefits/Expectations:

- **Foundational Learning**: Acquire core academic skills and knowledge that prepare students for the next grade level.
- **Authentic Learning**: Real-world learning experiences that are relevant and meaningful
- **Strengths-Focused**: Personalized learning approaches that cater to individual strengths and learning styles.
- **Aligned to Needs**: Course offerings, resources, interventions, and support systems are tailored to address individual needs.
- **Effective Teachers**: Educators are highly qualified and consistently produce positive outcomes for students.







## **Safety & Well-Being**

**The Safety & Well-Being icon features a shield with a road running through it, representing both protection and forward motion. The shield symbolizes the district's commitment to ensuring a safe and supportive environment, while the road reflects students' ongoing journey through their education. By prioritizing student well-being and security, BCPS helps create a space where every learner can confidently move forward.**



# Safety & Well-Being



A secure and supportive environment is the foundation of student success. This pillar ensures every student feels valued, safe, and supported—both physically and emotionally—so they can confidently move forward in their education.

## Student Safety & Well-Being Benefits/Expectations:

- Safe and Conducive Spaces: Creating an environment without fear or distraction.
- Personal and Social Development: Development of essential life skills that contribute to students' overall health and success.
- Friendships and Connections: Build positive relationships with peers and develop a sense of belonging in the school community.
- Respect for Self and Others: development of essential character traits that contribute to both individual and collective well-being.
- Practice Empathy: Building connections with others by fostering understanding and compassion.







## **Fiscal & Operational Care**

**The Fiscal & Operational Care icon features a foundation of bricks with an arrow embedded within, symbolizing both stability and forward momentum. The stacked bricks represent the strong financial and operational framework that supports students, staff, and the broader BCPS community. Each brick signifies the building blocks of sustainability—responsible financial planning, well-maintained facilities, and strategic growth. The arrow running through the structure reinforces the district’s commitment to progress, ensuring that every operational decision contributes to a future of continued success and innovation.**



# Fiscal & Operational Care



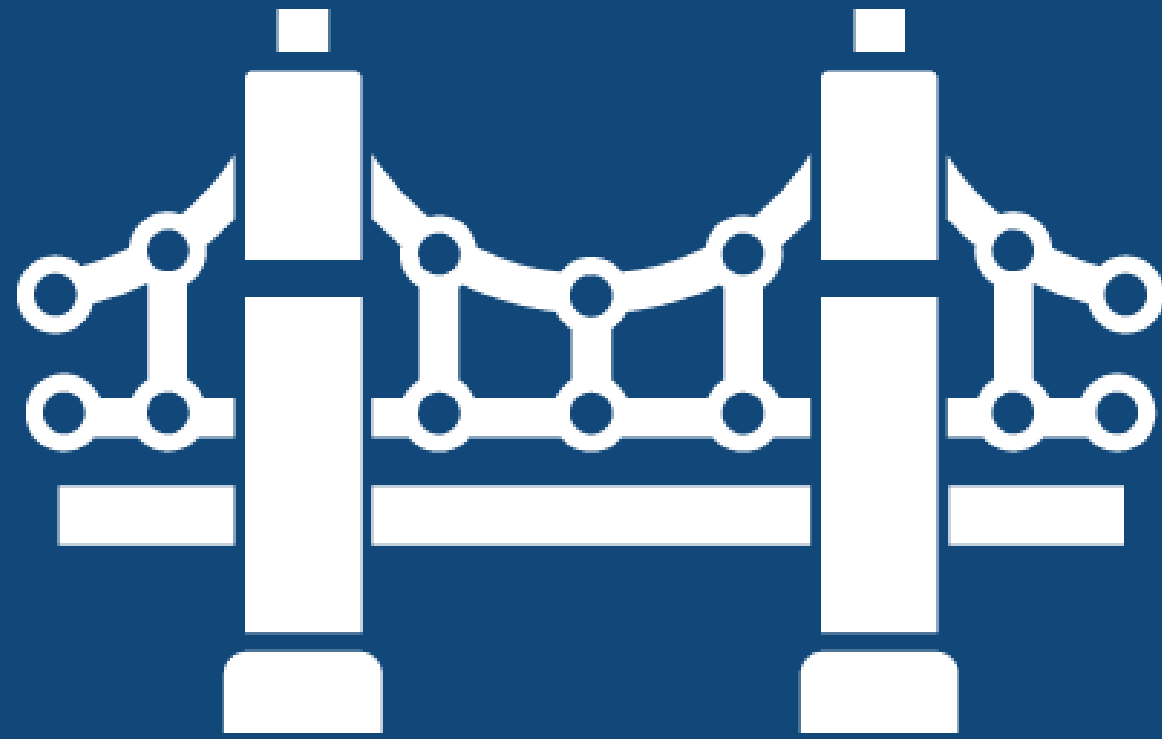
A strong foundation ensures continuous progress. By responsibly managing our facilities, finances, and resources, we create a sustainable environment that supports students and staff at every step of their journey.

## Fiscal & Operational Care Benefits/Expectations:

- **Hire the Right People:** Hire staff whose skills, values, and commitment align with the district's needs and priorities.
- **Everyone is in the Loop:** Families, community members, staff, and students have access to information about school/district goals, use of resources, and progress.
- **Resources Aligned to District Goals:** Financial, human, and material resources are used to support the school/district needs and priorities.
- **Trained and Supported Staff:** All staff receive ongoing training and support to do their jobs well, serve students effectively, and stay current with the changing needs of our schools.





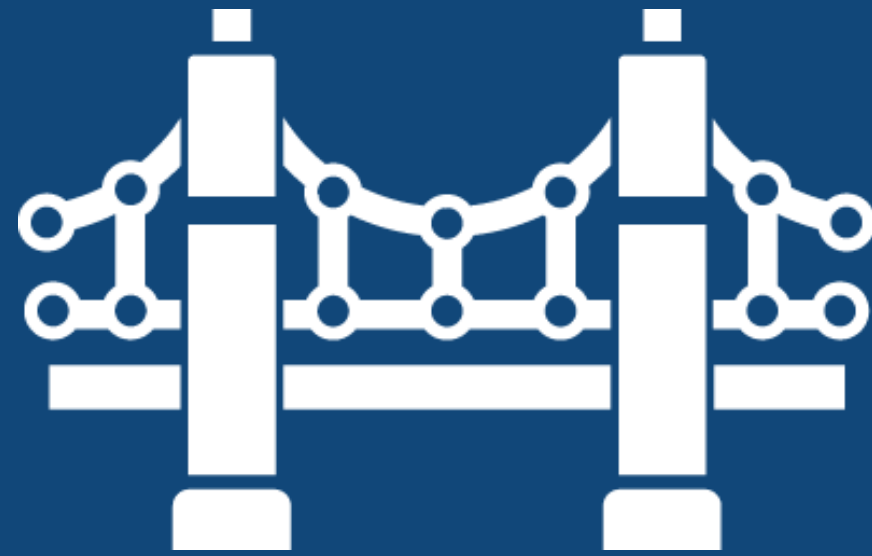


## **Community Collaboration & Engagement**

**For Community Collaboration & Engagement, the icon features a bridge composed of small connections—dots and lines linking together—symbolizing the many relationships that create a strong support system for students. Just as a bridge is built piece by piece, student success is strengthened through meaningful partnerships between schools, families, businesses, and the community. This icon reflects BCPS’s belief that progress happens when people work together, ensuring that every student has the connections they need to move forward with confidence.**



# Community Collaboration & Engagement



Progress happens when we move forward together. This pillar focuses on building meaningful partnerships with families, businesses, and community organizations to enrich learning, strengthen engagement, and develop an understanding of civic responsibility.

## Community Collaboration & Engagement Benefits/Expectations:

- **Community and Businesses are Partners:** The school/district works with the community to co-create learning experiences, share resources, and support each other's goals to benefit students and the community.
- **Parents/Guardians are Partners:** The school/district provides meaningful opportunities for parents and families to be involved in their child's learning.
- **Students as Citizens:** Students contribute to their community and demonstrate civic responsibility.







## Engaged & Well-Rounded Students

The Engaged & Well-Rounded Students icon is a torch with a flame, incorporating a road inset within the fire, visually linking the pillar to BCPS's "Moving Forward" theme. The torch represents leadership, passion, and the diverse opportunities students have to explore their potential. The fire, with a road embedded inside, symbolizes continuous learning, personal development, and the many paths students can take to fuel their growth—whether through extracurricular activities, athletics, or the arts. This design captures the energy and momentum of student engagement, reinforcing BCPS's mission to ignite curiosity, inspire creativity, and support well-rounded development.



# Engaged & Well-Rounded Students



Students flourish when provided with diverse opportunities to explore their interests and develop leadership skills, ensuring they can successfully contribute to their community. This pillar ensures that opportunities exist for students to build emotional readiness, social skills, and teamwork.

## Engaged & Well-Rounded Students Benefits/Expectations:

- **Students have a voice:** Student input helps shape learning experiences and school/district decisions.
- **Relevant and Meaningful Work:** Learning experiences connect to real-life and community needs.
- **Creativity:** Learning experiences develop innovative thinking and problem-solving skills relevant to community needs and desires.
- **Passion Focused:** Students explore individual interests and passions, fostering a deeper connection to the school/district and community.







## Life Readiness

**For Life Readiness, the icon features a location pin resting on what resembles a map or document, symbolizing the carefully planned journey toward future success. Rather than a single road, this represents the multiple pathways students can take—whether through college, career, or other post-graduation opportunities. The map-like element ties back to BCPS's commitment to guiding students with intention, providing them with the tools and direction they need to navigate their own unique futures.<sup>5</sup>**



# Life Readiness



Education is more than a classroom experience—it's preparation for life beyond a high school diploma. This pillar ensures students graduate with the skills, social resilience, certifications, and experiences necessary to pursue higher education, enter the workforce, or join the armed forces.

## Life Readiness Benefits/Expectations:

- **Readiness for the Future**: Students have the knowledge, skills, credentials, and/or experience to succeed in the next phase of life and beyond.
- **Lifelong Learning Habits**: Learning experiences develop a continuous curiosity, love of learning, and the skills needed to independently pursue knowledge and growth throughout their lives
- **Own Their Work**: Students take responsibility, initiative, and pride in their learning and contributions





