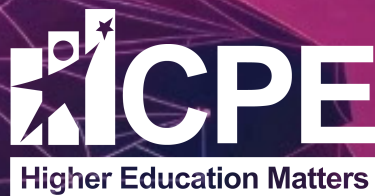




# Futuriti

A legislative guide to  
Kentucky's new education  
and career website



## What is Futuriti?

- It is a dynamic website and database that allows you to explore 700+ careers and educational opportunities with Kentucky-specific wage and projection data.
- Futuriti highlights careers with high regional demand across Kentucky.
- The Future Finder Database provides cost comparisons, completion rates, and debt statistics for all Kentucky public and private universities, community colleges, and technical schools, and hows which career pathways and majors are available at each Kentucky high school and technical center.
- Futuriti is a free, Kentucky-specific online resource for anyone to use.
- There are no login requirements. It does not collect personal data such as name, email address, or other personal identification information.
- Future Finder data is produced by KYSTATS and will be updated annually.
- The Kentucky Council on Postsecondary Education (CPE) hosts and maintains the website.

## Futuriti aligns with Kentucky's Education and Workforce Statutes and Priorities

**By 2031, 63% of Kentucky careers, or 1.3 million jobs, will require training or education after high school.**

Right now, only 55% of people in the state have a certificate or degree. Kentucky's postsecondary system is making progress toward its goal of 60% of Kentucky adults to have a postsecondary credential by the year 2030, but it must do more to help improve the state's workforce participation rate which ranks 43rd in the U.S.

**Futuriti was built to create a paradigm shift in the way Kentuckians view postsecondary education.**

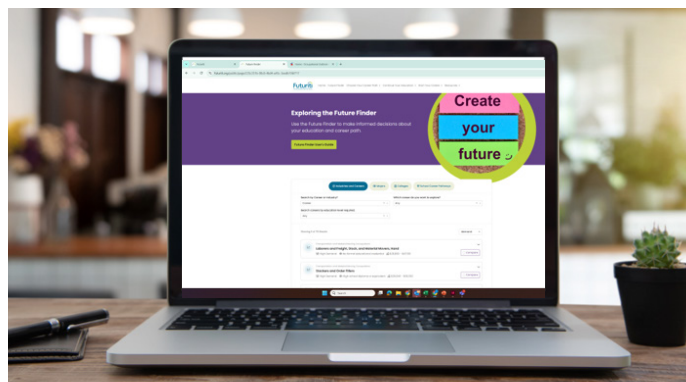
Its mission is to help citizens achieve a standard of living that exceeds the national average. With it, we hope to increase the workforce participation rate for our employers and help Kentuckians in need break the cycle of poverty.

**The mission of Futuriti aligns with multiple statutes and the principals of building a strong, well-educated workforce that the Kentucky General Assembly has been cultivating for decades.**

In 1997, the Kentucky General Assembly created the Kentucky Council on Postsecondary Education (KRS 164.020), charging it to, among other things:

- Develop and implement a statewide strategic agenda aligned with state goals.
- Collect, analyze and report comprehensive performance data.
- Ensure the coordination and connectivity of technology.

While these priorities and the data behind them have long been articulated by CPE to policymakers and higher education leaders, per KRS 164.020, there has not historically been a communications platform which speaks directly to our largest stakeholder – students and prospective students in the Commonwealth.



Following the recommendations of the state's P-20 council, the Commonwealth Education Continuum, and KRS 164.0284 – the Student's Right to Know Act – CPE collaborated with KYSTATS and KDE to create this student-facing platform.

Futuriti.org, launched in February 2025, includes a Kentucky-specific database with:

- Job descriptions and wages for more than 700 careers;
- Highlights of in-demand Kentucky careers;
- Cost, completion and debt information on all public and private universities, community colleges, and technical schools in the Commonwealth;
- A listing of the majors offered at Kentucky public and private universities;
- All career pathways offered at each high school and technical center.

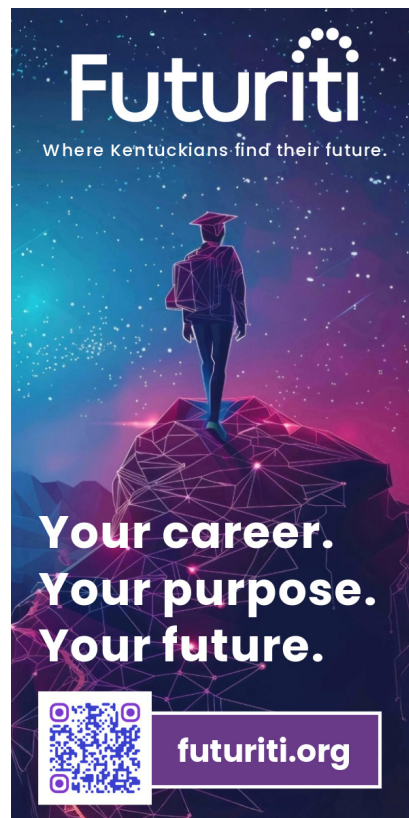
In addition to the database, the site boasts more than 100 pages which guide Kentuckians through the process of choosing career paths, continuing their education, and starting their careers. Futuriti provides a technology-based solution that articulates to our citizenry the ideals outlined in KRS 164.003:

**“The general welfare and material well-being of citizens of the Commonwealth depend in large measure upon the development of a well-educated and highly trained workforce.”**

In 2024, the Kentucky General Assembly reemphasized the need to attract more nontraditional age students to postsecondary programs via SB 191, by defining this classification in the performance based funding structure outlined in KRS 164.092.

**Futuriti was designed to attract and reduce barriers for nontraditional age students to find the career training and education they need.** Currently, our greatest challenge is building awareness to this population as outreach dollars are limited. **Our team is continually seeking grant funding and other allocations to allow us to build a comprehensive outreach strategy to target regions of the state where labor force and attainment rates are the lowest.**

Futuriti also supports K-12 students with career exploration, career and technical education (CTE) pathway information, and more. We are working closely with KDE to create intentional connections to the Individual Learning Plan requirement (704 KAR 3:305). Many districts have already started integrating Futuriti into career exploration work. By connecting K-12 students, adult learners and other citizens with all of the resources they need to make education and career decisions, CPE has committed not just to implementing “a seamless, integrated system of postsecondary education



strategically planned and adequately funded to enhance economic development and quality of life,” as called for in KRS 164.003, it has found a means to put this system and its value proposition in the palm of each Kentuckian’s hand.

And this is only the beginning. Version 1.0. **Futuriti.org is live and ready to help Kentuckians find their future, but we’re already planning for our future – for Futuriti 2.0.**

#### **Developments in Progress:**

- A cost of living calculator
- A scholarship database
- An apprenticeship database
- An employer database

## **Futuriti aligns with the following Kentucky Revised Statutes (KRS):**

### **KRS 164.0284 – Student’s Right to Know**

Futuriti hosts Future Finder, a user-friendly and easily accessible way for Kentuckians to access the data compilation required under KRS 164.0284.

### **KRS 164.787 – Work Ready Kentucky Scholarship Program**

Futuriti promotes the Work Ready Kentucky Scholarship Program by building awareness of the scholarship and highlighting the 5 high-demand sector areas that need qualified and credentialed workers.

### **KRS 156.802 – Career and Technical Education**

Futuriti lists which CTE program areas and career pathways are

offered at each CTE center so students know what is available and can make informed decisions based on their aptitudes and career goals.

### **KRS 164.7871 – KEES**

Futuriti provides information about the KEES program and how they can use it towards college tuition. It also links to the KHEAA website where students can access financial aid information.

### **KRS 164.786 – Dual Credit Scholarship**

Futuriti pages inform high school students and parents about the academic and financial benefits of the dual credit scholarship.

### **KRS 164.773 – Student Teacher Stipend Program**

The education sector page of Futuriti helps potential students understand the Student Teacher Stipend Program and the many education careers associated with the sector.

### **KRS 158.1411 – Financial Literacy**

Futuriti allows students to better understand the wages they will make when they enter the workforce and the cost of higher education. Futuriti links to national budget calculators for students to access cost of living data as well.

**There are 1.4 million working-age Kentuckians without credentials. If just 5% of those 1.4 million are inspired by Futuriti, 55,000 working-age Kentuckians could have a credential or be working towards one this time next year.**

## Strategic Agenda Alignment

The most recent CPE strategic agenda (2022–2030), highlights areas of focus for the state's higher education system, which include affordability, transitions, success, talent, and value. CPE, with its partners at KDE, has aligned the design of Futuriti with the state's strategic agenda for postsecondary education in the following ways:

### **1. Reduce financial barriers to college enrollment and completion.**

Futuriti provides an entire section on financial aid options, including links to KHEAA and FAFSA, definitions of different kinds of aid, and information on scholarships, and grants.

### **2. Improve the public's understanding of the true cost of college and how to pay for it.**

Following the requirements of KRS 164.0284, Futuriti's college and majors database includes costs, loan default rates, percentages of students with student loans, completion times and median salaries for graduates.

### **3. Increase students' readiness to enter postsecondary education.**

Dozens of pages of content within Futuriti are dedicated to the preparation and transition from high school to postsecondary. This includes content on the importance of postsecondary, the differences in types of postsecondary education, and taking advantage of dual credit opportunities.

### **4. Increase college-going rates and enrollment in postsecondary education.**

While we are actively working to increase college-going among high school students through the means listed above, we are also working to increase enrollment of Kentucky's adult population.

### **5. Increase persistence in and timely completion of postsecondary programs.**

Many pages in Futuriti are dedicated to student success. This means sharing links to on-campus programs at Kentucky's colleges and universities for academic services and student basic needs.

### **6. Maximize transfer of academic and experiential credit.**

Links to transcript services as well as provides transfer terminology are listed within Futuriti. The development team is currently working to expand what the transfer content and functionality looks like within the site.

### **7. Ensure academic offerings are high-quality and relevant.**

A full listing of all public and private academic offerings are listed in the Majors database.

### **8. Improve postsecondary education's responsiveness to and alignment with current and projected workforce demands.**

By leveraging KYSTATS' job projection data, high-demand careers are indicated in the Future Finder database, as well as highlighted by sector, attainment level, and region.

### **9. Guide investments in research, training and scholarships to support innovation & growth.**

The Futuriti development team is currently in the process of creating a searchable database of Kentucky-specific scholarships, tuition waivers, and repayment programs which should be live in late 2025. Currently, scholarship information is linked to KHEAA's website, but the current PDF format is not intuitive or easily searchable.

### **10. Increase the public's belief in the transformational power of postsecondary education.**

The data within Futuriti tells this story. The high demand jobs by education attainment level clearly put a price tag on the value of higher education.

### **11. Build support for greater investment in postsecondary education.**

As the pandemic relief funding that was used to develop Futuriti has expired, CPE has invested dollars from the Strategic Investment and Incentive Funding Program (KRS 164.7911) into hiring a program director and into website hosting and development costs.

## Budget Request

For the next biennium, **CPE is requesting \$250,000** per year in funding from the Kentucky General Assembly to cover the costs for Futuriti website development projects, site maintenance and outreach efforts.

If funded, digital outreach efforts would be targeted at low-income, low-attainment households in the Commonwealth – specifically individuals who are not receiving state services like Adult Education or SNAP Employment & Training – who would stand to benefit most to the information and data Futuriti offers.