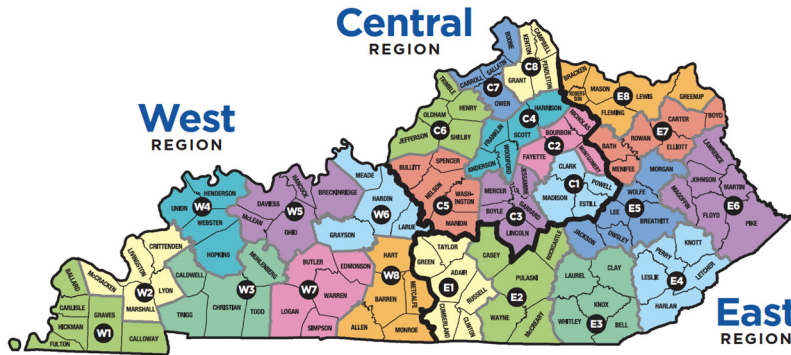


# IMPROVING THE LIVES OF KENTUCKIANS THROUGH COOPERATIVE EXTENSION

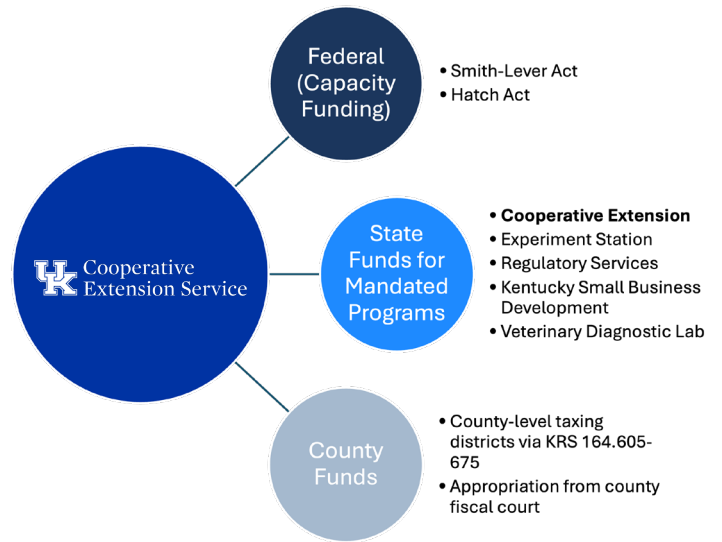


## 120 COUNTY OFFICES

With agents and staff in every county in the Commonwealth, UK Extension programming is hyperlocal and tailored to each county.

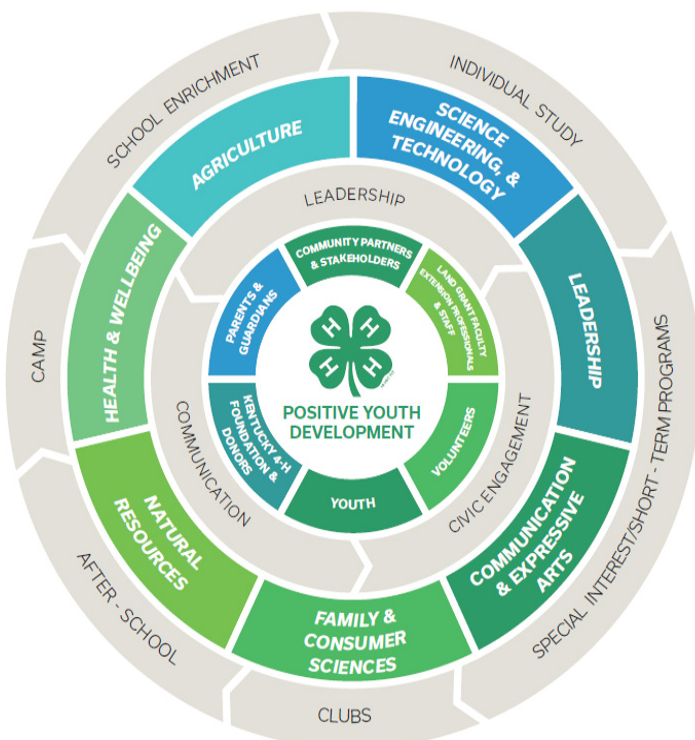
## SHARED FUNDING MODEL

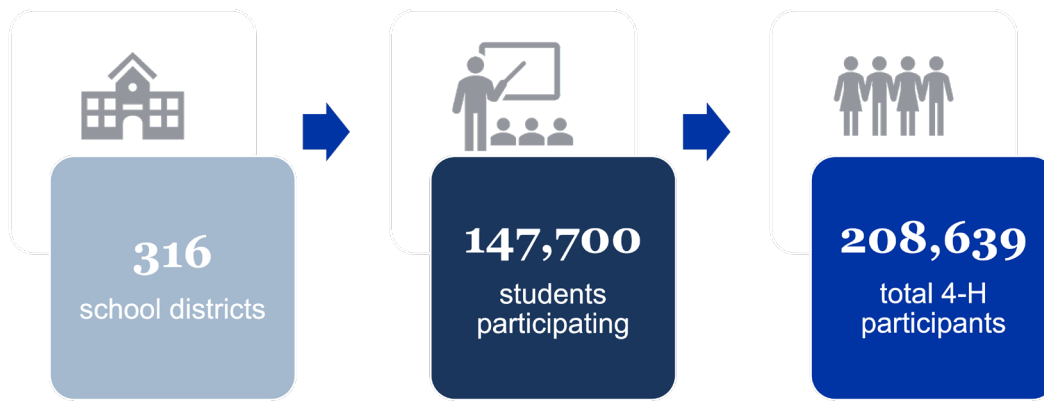
Federal, state and county funds combine to support 120 county offices as well as faculty, specialists, associates and other state level staff.



## POSITIVE YOUTH DEVELOPMENT

The Kentucky 4-H Target represents the key pieces of development of youth - foundational principles, stakeholders, essential skills and our seven core program areas.





## SCHOOLS AND 4-H

4-H works with 316 school districts to provide educational content that aligns with Kentucky academic standards. With thousands of participants across in-school, afterschool, clubs and contests, over 200,000 youth participate in 4-H.

## 4-H is building a ready generation.

### 6M Reach

greater than any other org

### Unmatched Network

from 3,000 counties to state & federal institutions

### Proven Impact Model

spanning 20 years of longitudinal research

Youth that participate in 4-H programs emerge:

- 3X** more likely to participate in community service
- 2X** more likely to report living life with intentionality and purpose
- 2X** more likely to have the goal of being a leader

## OUR BOLD GOAL TO BUILD A BEYOND READY GENERATION

By 2030, 1 million young people will learn and practice leadership, civic engagement, and communication skills through Kentucky 4-H.

## READY TO LEARN MORE?

Visit [extension.mgcafe.uky.edu](http://extension.mgcafe.uky.edu) to find your county office, delve into programs and explore practical information to improve your life, your family and your community.

For questions: Lily Douthitt Kuechle, [lily.douthitt@uky.edu](mailto:lily.douthitt@uky.edu)

### Cooperative Extension Service

Agriculture and Natural Resources  
Family and Consumer Sciences  
4-H Youth Development  
Community and Economic Development

### MARTIN-GATTON COLLEGE OF AGRICULTURE, FOOD AND ENVIRONMENT

Educational programs of Kentucky Cooperative Extension serve all people regardless of economic or social status and will not discriminate on the basis of race, color, ethnic origin, national origin, creed, religion, political belief, sex, sexual orientation, gender identity, gender expression, pregnancy, marital status, genetic information, age, veteran status, physical or mental disability or reprisal or retaliation for prior civil rights activity. Reasonable accommodation of disability may be available with prior notice. Program information may be made available in languages other than English. University of Kentucky, Kentucky State University, U.S. Department of Agriculture, and Kentucky Counties, Cooperating. Lexington, KY 40506



Disabilities accommodated with prior notification.