

Design Build Discussion

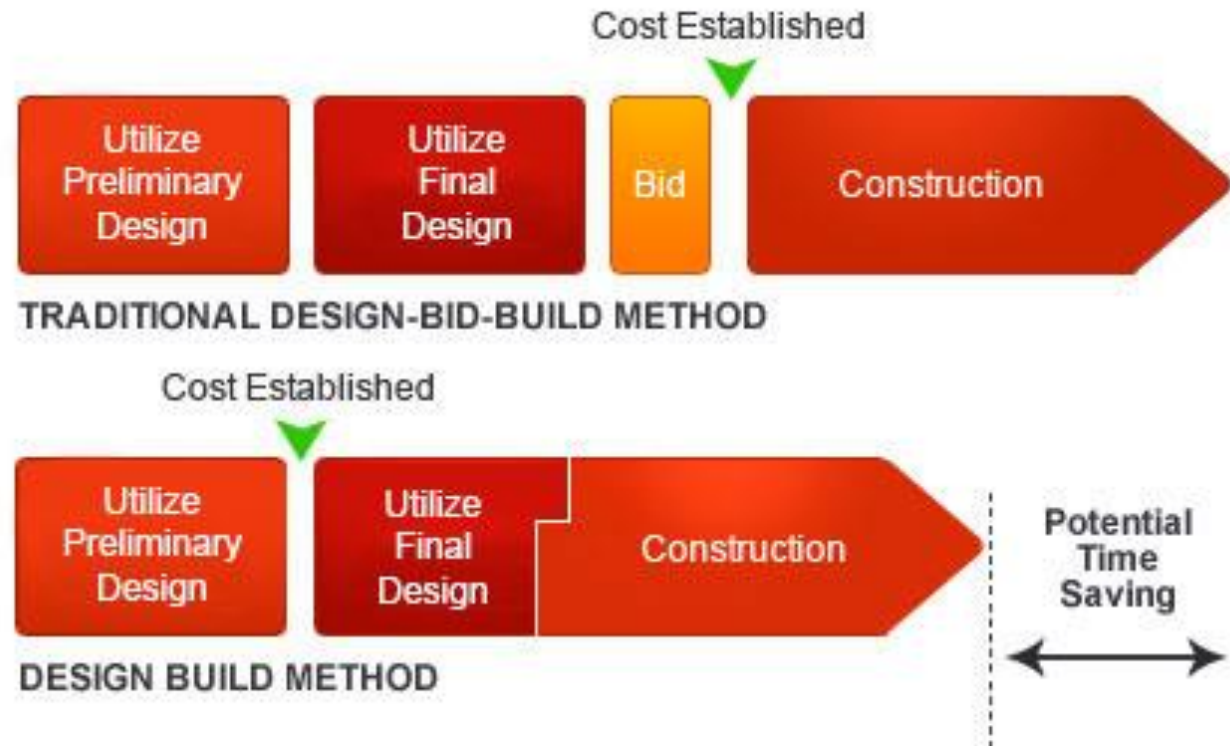
Budget Review Subcommittee on Transportation

November 19th, 2019



Design-Build Overview

- Limits on use prior to 2018
- HB 385 in 2018



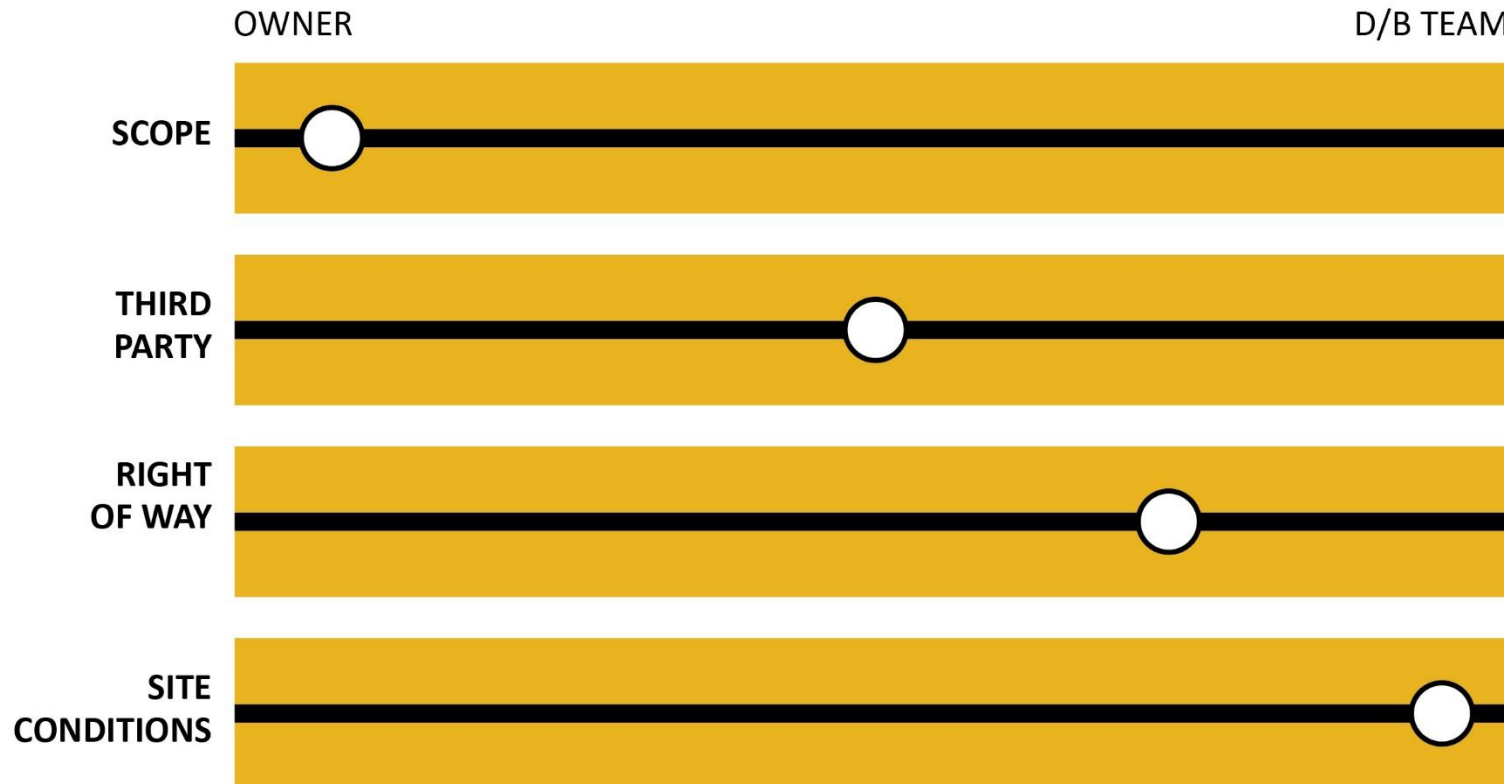
Design-Build Models

Multiple Best Value Procurement Methods

- Technical/Price Scoring
- Technically Acceptable/Low Price
- Technical/Variable Scope/Fixed Budget Scoring

Must decide which one fits

Risk Allocation



Alternative Technical Concepts

Suggested changes submitted by proposing teams to the contracting agency's supplied basic configurations, project scope, design or construction criteria. These proposed changes provide a solution that **is equal or better to the requirements in the RFP.**

- FHWA



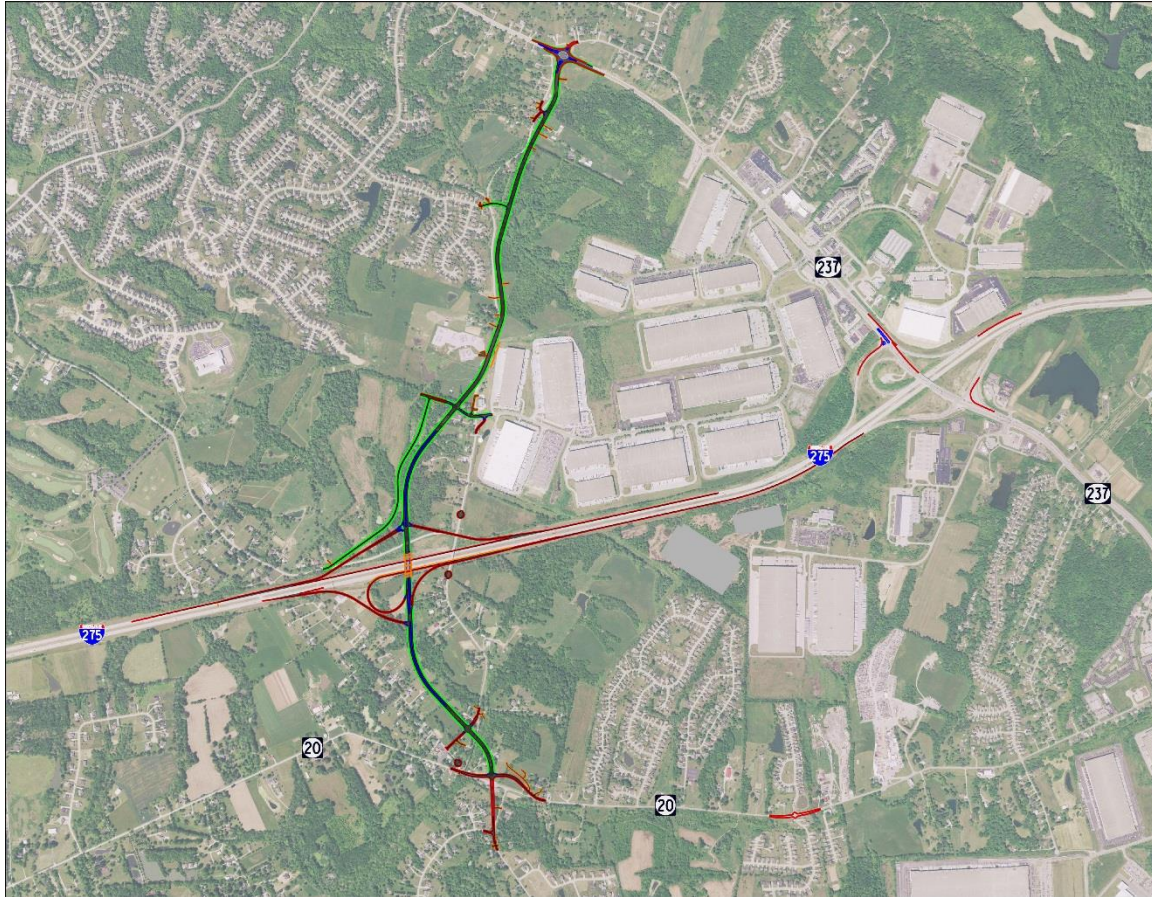
Development before Design Build

- Gain environmental approval
- Prepare procurement documents
- Industry standard 10 to 15 percent

Non-negotiables must be defined at this stage

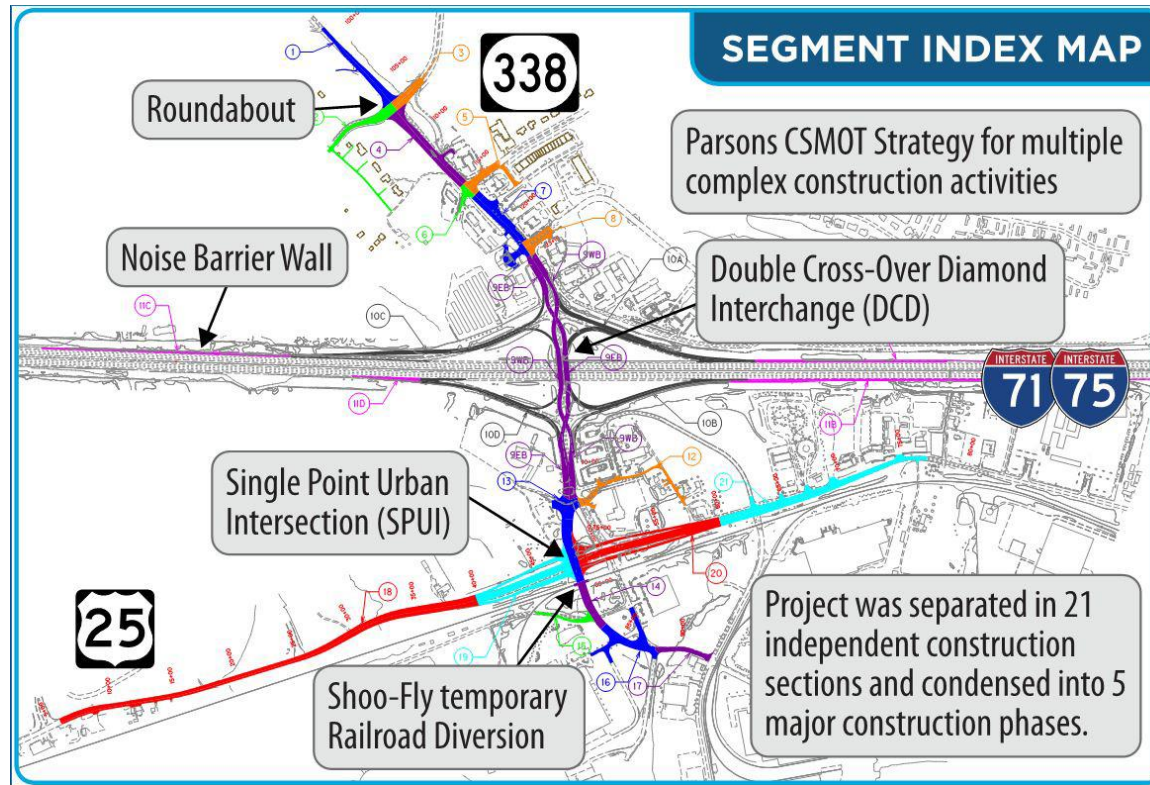
Current use: Graves Road

- Technical/Price
- Eaton Asphalt
- 9/05/19 Award
- \$56.3 million
- Completion 6/30/2022



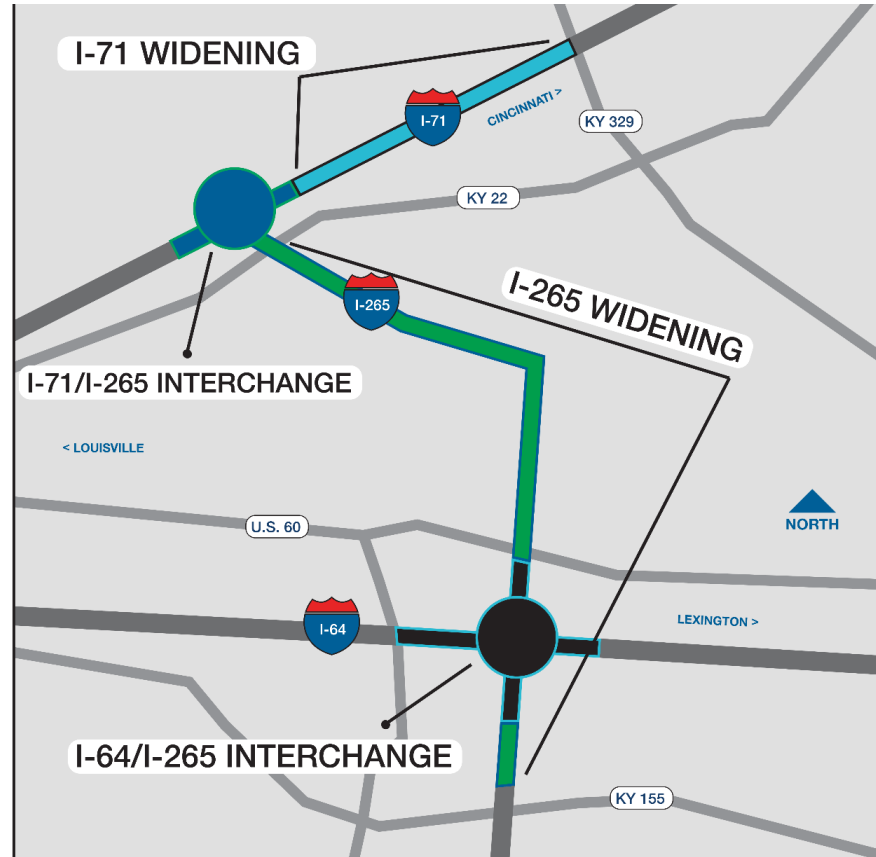
Current use: INFRA project

- Technical/Price
- Eaton Asphalt
- 10/29/19 Award
- \$120.6 million
- Completion 8/31/2022



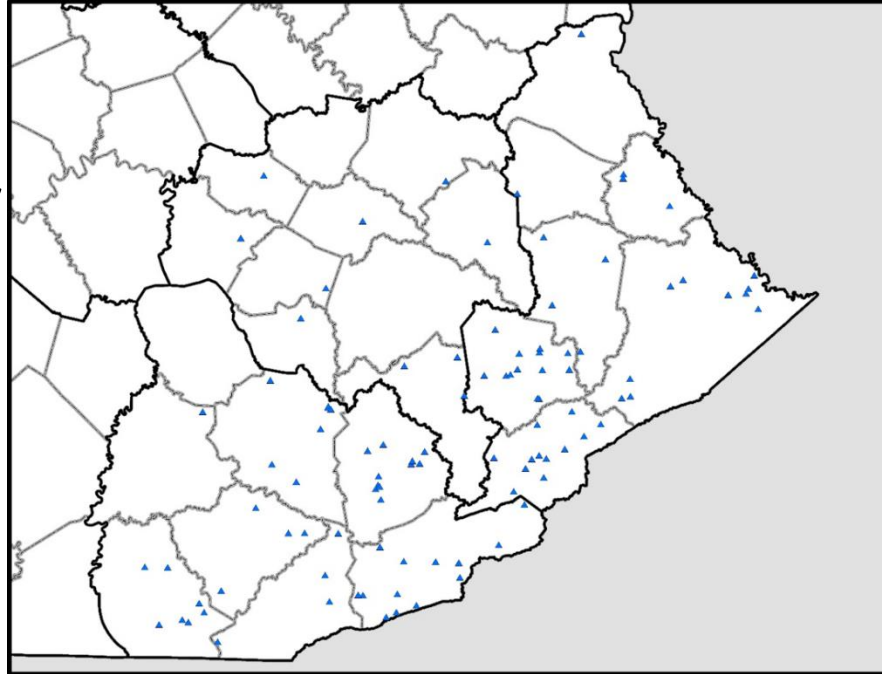
Current use: I-Move Kentucky

- Variable Scope/Fixed Budget
- Hall Contracting
- 10/28/19 Award
- \$180 million
- Completion 8/01/2023



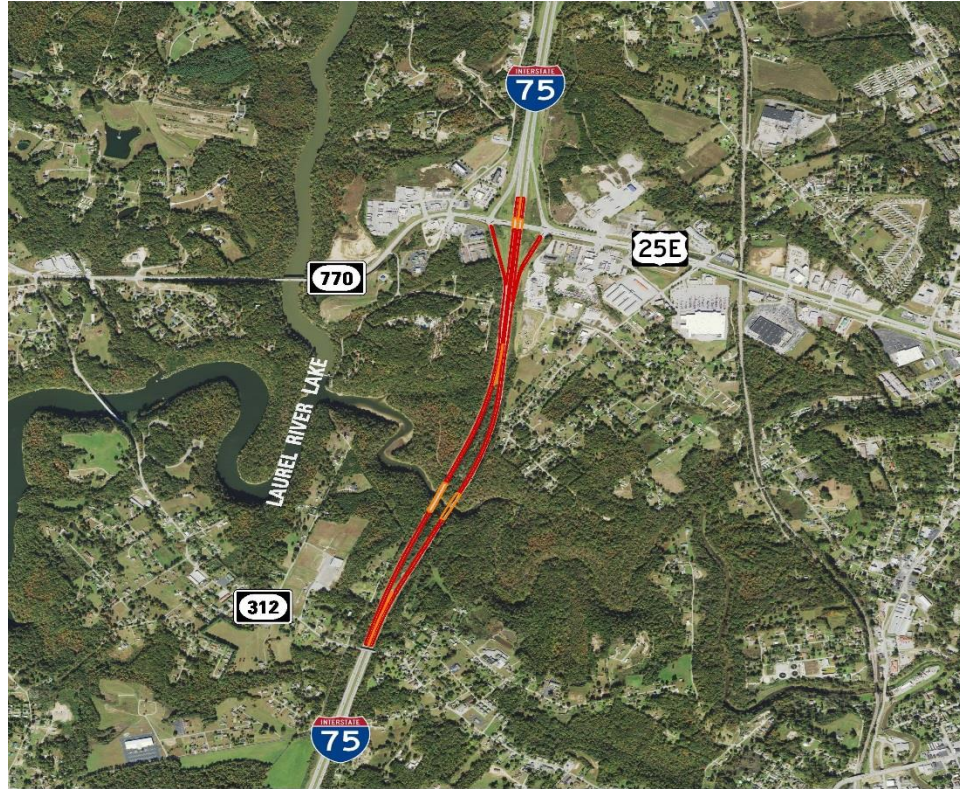
Current use: Bridging Kentucky

- Technical/Price
- Central Bridge-Bizzack JV
- 10/15/19 Award
- \$93.3 million
- Completion 11/01/2023



Current use: I-75 Lynn Camp Creek Bridges

- Technical/Price
- Two Teams Competing
- Awarded by 12/6/19
- Completion by 11/1/2021



QUESTIONS?

CONTACT INFORMATION

Gary Valentine, P.E.
State Highway Engineer's Office
gvalentine@ky.gov