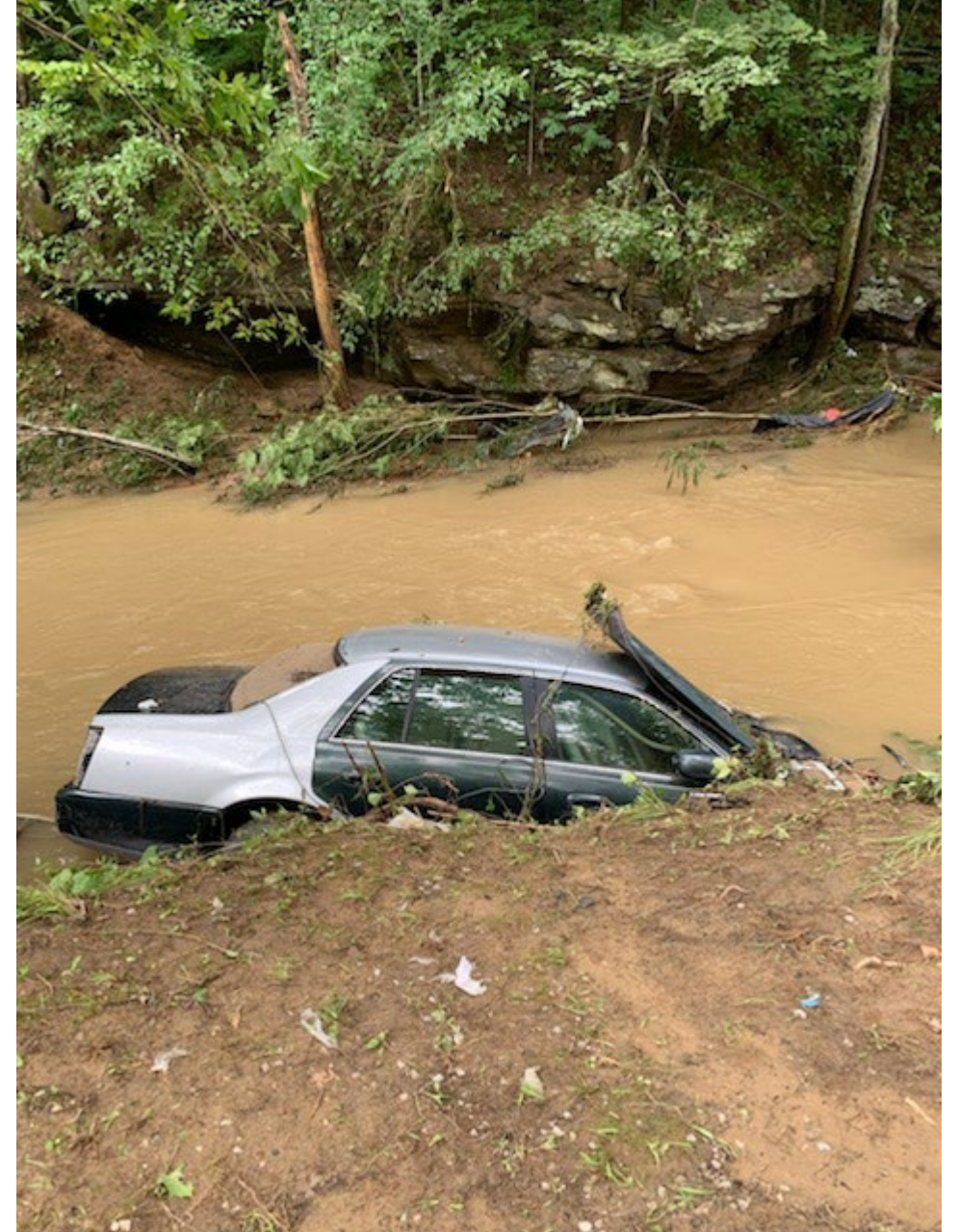




EASTERN KENTUCKY FLOODING UPDATE

KYTC Responsibilities

- Initial cleanup to enable first-responder access
- Infrastructure assessment
- Sheltering mission
- Debris removal/cleanup
- Infrastructure repair





**Trailers at
Jenny Wiley State Park**



**Department of Highways
District 10 office
JACKSON, KY**



BEFORE

KY-451

PERRY COUNTY



REPAIR WORK

**Pipe replacement
KY-451 in Krypton
PERRY COUNTY**



**Washed-out bridge on
Edward Drive in
Hindman
KNOTT COUNTY**



Low-water crossing built
downstream to reconnect
home and highway



AFTER

Debris Removal by the Numbers

Debris Removal Weekly Report
as of 09/20/2022



RIGHT OF WAY

TOTAL TONS

108,000

TOTAL TRUCK LOADS

6,722



WATERWAY

TOTAL TONS

101,529

TOTAL TRUCK LOADS

6,505

**Temporary Debris
Management Site
PIKE COUNTY**



BEFORE



AFTER



**Bridge at Buckfield Rd
KY-122
PIKE COUNTY**

BEFORE



DEBRIS REMOVAL
Railroad bridge at
Bobby Lane
PIKE COUNTY

AFTER



BEFORE



AFTER



**DEBRIS REMOVAL
KY 610 Virgie RD bridge
PIKE COUNTY**

POPUP Licensing Services

- Popup Driver Licensing services in 11 locations in 5 counties.
- 3,342 Licenses and IDs issued.



POPUP Licensing at
Jenny Wiley State Park

QUESTIONS?



CONTACT INFORMATION

Kenny Bishop, Legislative Director
kenny.bishop@ky.gov
859-797-9733

transportation.ky.gov
Twitter: @KYTC
Facebook: /kytc120