

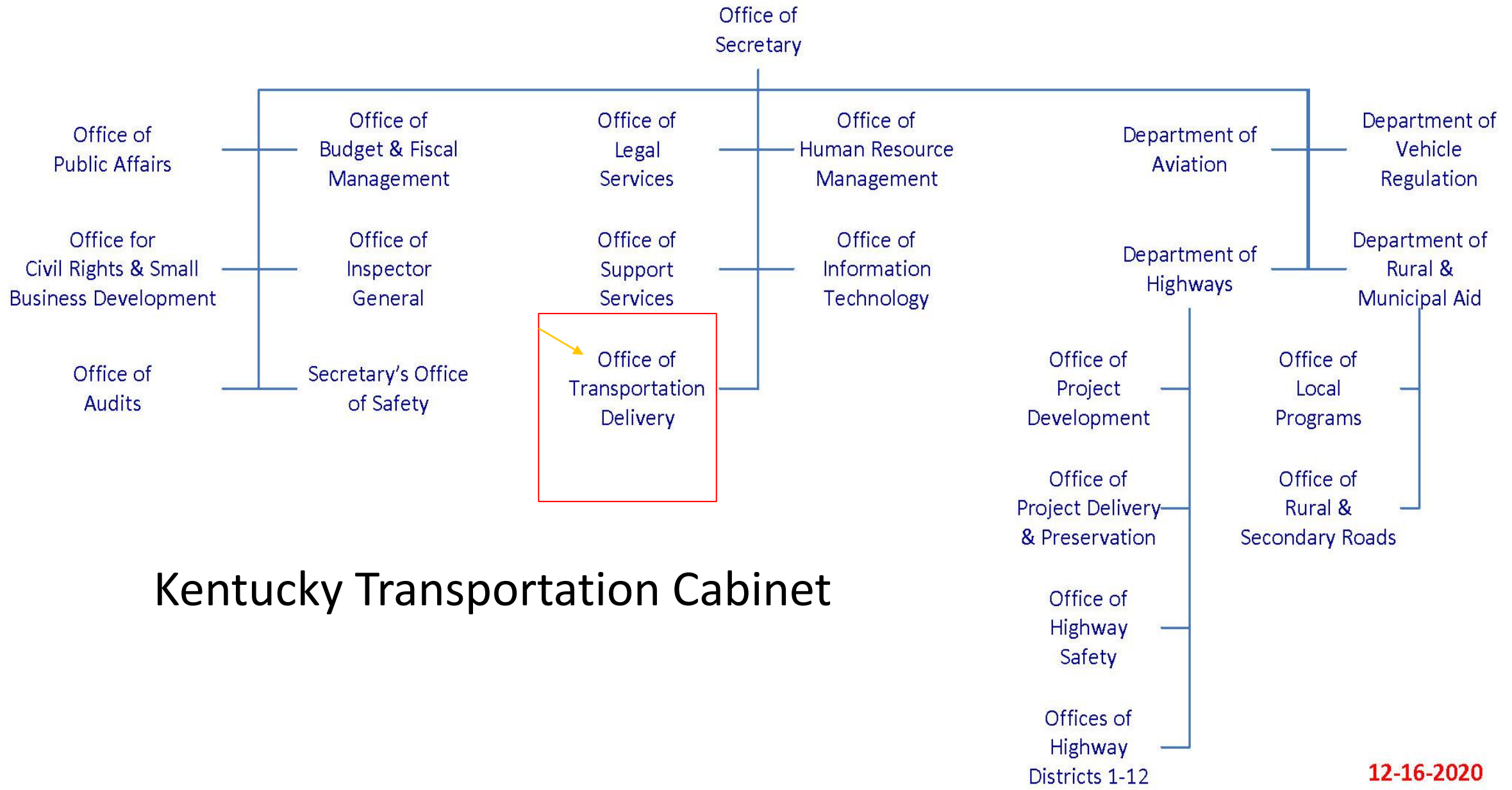


Budget Review Subcommittee On Transportation July 19, 2023

Kentucky Transportation Cabinet
Office of Transportation Delivery (OTD)
Vickie S Bourne, Executive Director

PUBLIC TRANSIT
Office Phone: 502-564-RIDE (7433)

Executive Offices & Departments



Kentucky Transportation Cabinet



**KYTC/Office of
Transportation
Delivery (OTD)
\$315 Million
1% Adm Cost**

- Kentucky Non-Emergency Medicaid **\$150 million**
- Volkswagen Settlement Funds **\$8.5 million**
- Non Public School Bus **\$5 million**
- Department of Corrections **\$1.5 million**
- Public Transit various grants **\$140 million**
 - Senior Citizens and disabled persons Capital
 - Rural Public Transit-
 - capital operating, training
 - Statewide Transit Planning
 - Capital Match: **\$10 million General Funds**

PUBLIC TRANSPORTATION/FEDERAL TRANSIT Grants

Public Transportation means surface transportation by a conveyance that provides regular and continuing general or special transportation to the public but does not include taxi, Uber, school bus or charter.

Public Transportation Overview

FEDERAL HIGHWAY TRUST FUND

- The Highway Account, which is largely devoted to construction and maintenance of highways and bridges; and
- The **Mass Transit Account**, which is used to make capital expenditures on buses, railways, subways, ferries, and other modes of public mass transit.

Buses/Bus Stops/Computers/Buildings-Garages

RURAL PUBLIC TRANSPORTATION

Danville Transit
Garage/BGCAP



Laurel County Transfer/RTEC



Frankfort
Garage



PUBLIC TRANSIT



**Federal Transit
Administration**

FEDERAL FUNDING SOURCE



Federal Transit Administration – FTA
Formula Based on Population/Ridership Data
Urban/Small Urban/Rural
Trips/Miles Provided

PUBLIC TRANSIT



**Federal Transit
Administration**



FEDERAL REQUIREMENTS

Federal Transit Administration – FTA

Stipulations

Allowable Cost

FTA approves our grantees in a Federal System

Federal Audits & Oversight



Northern KY- TANK



Louisville-TARC

KYTC Public Transportation Grantees

OPERATIONS- Capital-Operating-Training Grants

Transit Authorities

Cities

Community Action Agencies

Private Non-profits

PLANNING Grants

ADD Planning Districts

MPO

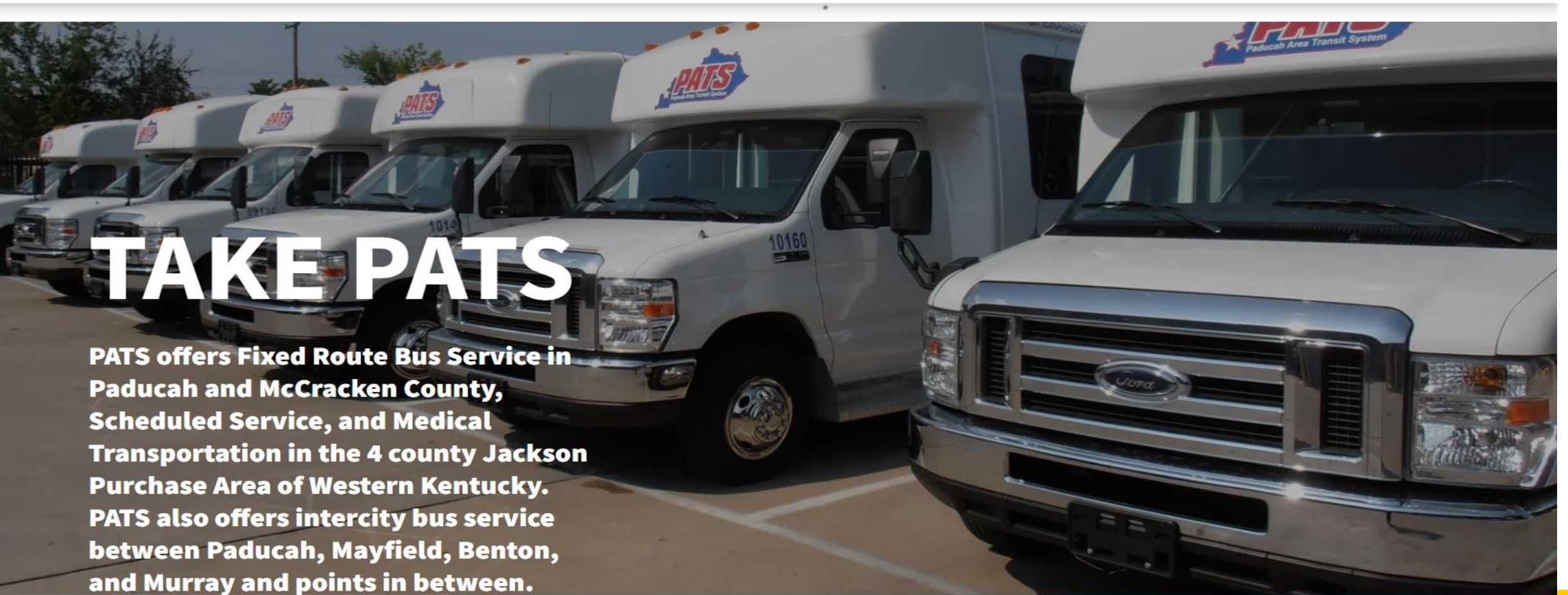
TRANSIT AUTHORITIES



[HOME](#) [SERVICES](#) [BUS/TROLLEY ROUTES](#) [INTERCITY](#) [ADA](#) [MORE](#)

TAKE PATS

PATS offers Fixed Route Bus Service in Paducah and McCracken County, Scheduled Service, and Medical Transportation in the 4 county Jackson Purchase Area of Western Kentucky. PATS also offers intercity bus service between Paducah, Mayfield, Benton, and Murray and points in between.



Public Transportation City Grantees



City of Glasgow

TRANSPORTATION.KY.GOV

Community Action Grantees



Breckinridge,
Grayson,
Larue, Marion
and Nelson
counties



Public Transportation Community Actions

Blue Grass Community Action Partnership

1-800-456-6571

[About](#)

[Contact](#)

[Links](#)

[Services](#)

[Employment](#)

[Donate](#)

BGCAP Transit
800.456.6588

ation services are available from 6:00 AM to 6:00 PM, Monday through Friday. Saturday services are available from 8:00 AM to 6:00 PM. Route times may differ, as actual times may vary according to traffic conditions, weather conditions, and other factors.

Public Transit in the Bluegrass Region is expanding

now *Bluegrass Ride*, providing public transit throughout Georgetown.

Bluegrass RIDE will introduce new services to surrounding communities. Stay tuned for details.



Public Transportation Private Non Profits

Louisville Wheels
Transportation

Jefferson County-Specialized
transportation

Surrounding Counties: Bullitt,
Spencer, Henry...



Public Transportation Private Non Profits



Sandy Valley
Transportation

Johnson, Martin,
Floyd, Pike,
Magoffin

Public Transportation Private Non Profits

Rural Transit Enterprises Coordinated, RTEC

**Southeast Kentucky:
Bell, Clinton, Cumberland,
Knox, Laurel, McCreary,
Monroe, Pulaski, Rockcastle ,
Russell, Taylor, Wayne and
Whitley**



KYTC/Office of Transportation Delivery (OTD) Urban/Rural

FY19

26.6 million trips

FY21

- 11 million trips

FY22

- 14.3 million trips



KENTUCKY PUBLIC TRANSIT



**Federal Transit
Administration**

Rural Public Transportation
Due to COVID
Based on FY19 Ridership



Federal Apportionments for RURAL COUNTIES

FY22: \$26,895,709

FY23: \$27,483,020



Challenges

- **INCREASE RIDERSHIP**
- **SHORTAGE VEHICLES**
- **SHORTAGE DRIVERS**



TEAM
KENTUCKY®

TRANSPORTATION
CABINET

Thank
You!

