

# Kentucky Center for Statistics



June 24, 2025

Uniting our data.  
Informing our Commonwealth.

# KYSTATS LEGISLATION

- The Kentucky General Assembly established KYSTATS in statute in 2013 after Governor Steve Beshear established the entity by Executive Order in 2012.
- KRS 151B.133 directed the agency to oversee and maintain the warehouse of education and workforce data in the Kentucky Longitudinal Data System, as well as, but not limited to:
  - Develop standards to de-identify personal data;
  - Conduct research and evaluation of federal, state and local education and training programs;
  - Develop requirements and definitions for data to be provided by any institution;
  - Work with public agencies and other entities to define statewide education, workforce development, and employment metrics and ensure the integrity and quality of data being collected

*Source: KRS 151B.133, 151B.134*

# KYSTATS LEGISLATION CONTINUED

- Link data from multiple sources for consideration in developing broad public policy initiatives;
  - Promulgate administrative regulations necessary for proper system administration;
  - Establish data quality standards;
  - Ensure compliance with the federal Family Educational Rights and Privacy Act, 20 U.S.C. sec. 1232g, and all other relevant federal and state privacy laws.
- **KRS 151B.134 Established the Board of the Kentucky Center for Statistics**

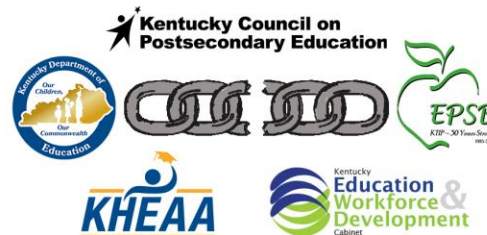
*Source: KRS 151B.133, 151B.134*



# Before KCEWS/KYSTATS

Agencies did not have the ability to connect their data with other agencies.

They were only able to answer simple questions like:  
How many high school graduates are there by district?  
How many certified teachers are in KY?

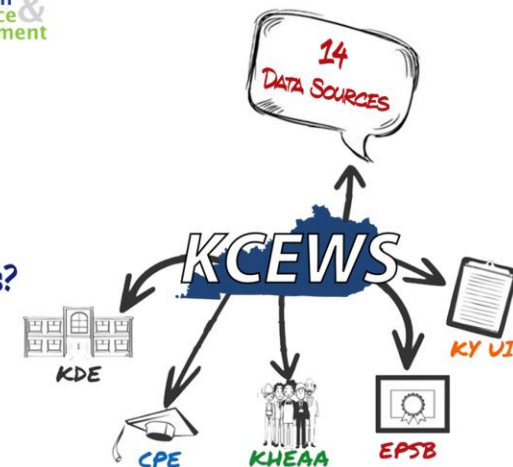


## 2012 KCEWS

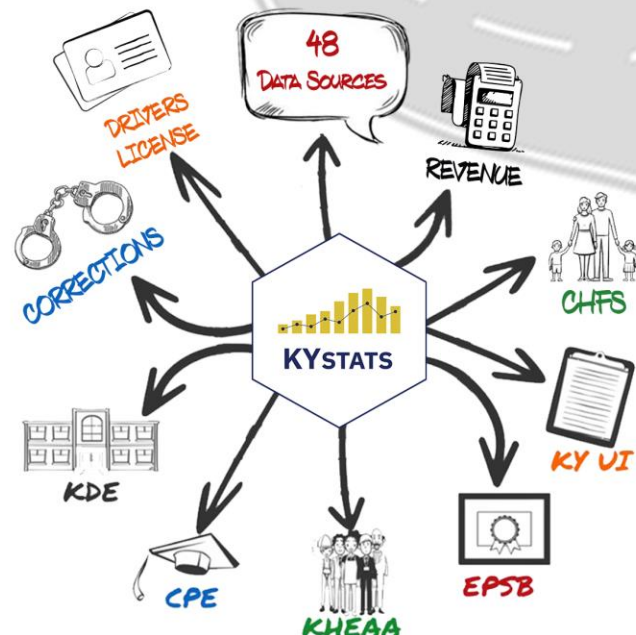
Agencies now have a way to connect their data with other agencies.

We can now answer more complex questions like:

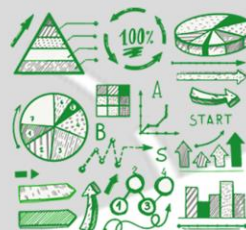
How many high school graduates are attending postsecondary institutions?  
How many credentialed postsecondary graduates are employed in KY?



2012  
1st High School  
Feedback  
Report



Sustainability:  
\$4.7 Million  
Annual Funding  
FY25



## 2024 KYSTATS Today

We are now connected with even more agencies and are able to reach beyond answering just educational questions like:

What educational and training programs lead to improved employability after incarceration?  
What are education and employment outcomes for those reliant on social service programs?

30  
REPORTS

365  
PRESENTATIONS  
& STAKEHOLDER  
MEETINGS

195  
INFORMATION  
REQUESTS

## OUR MISSION

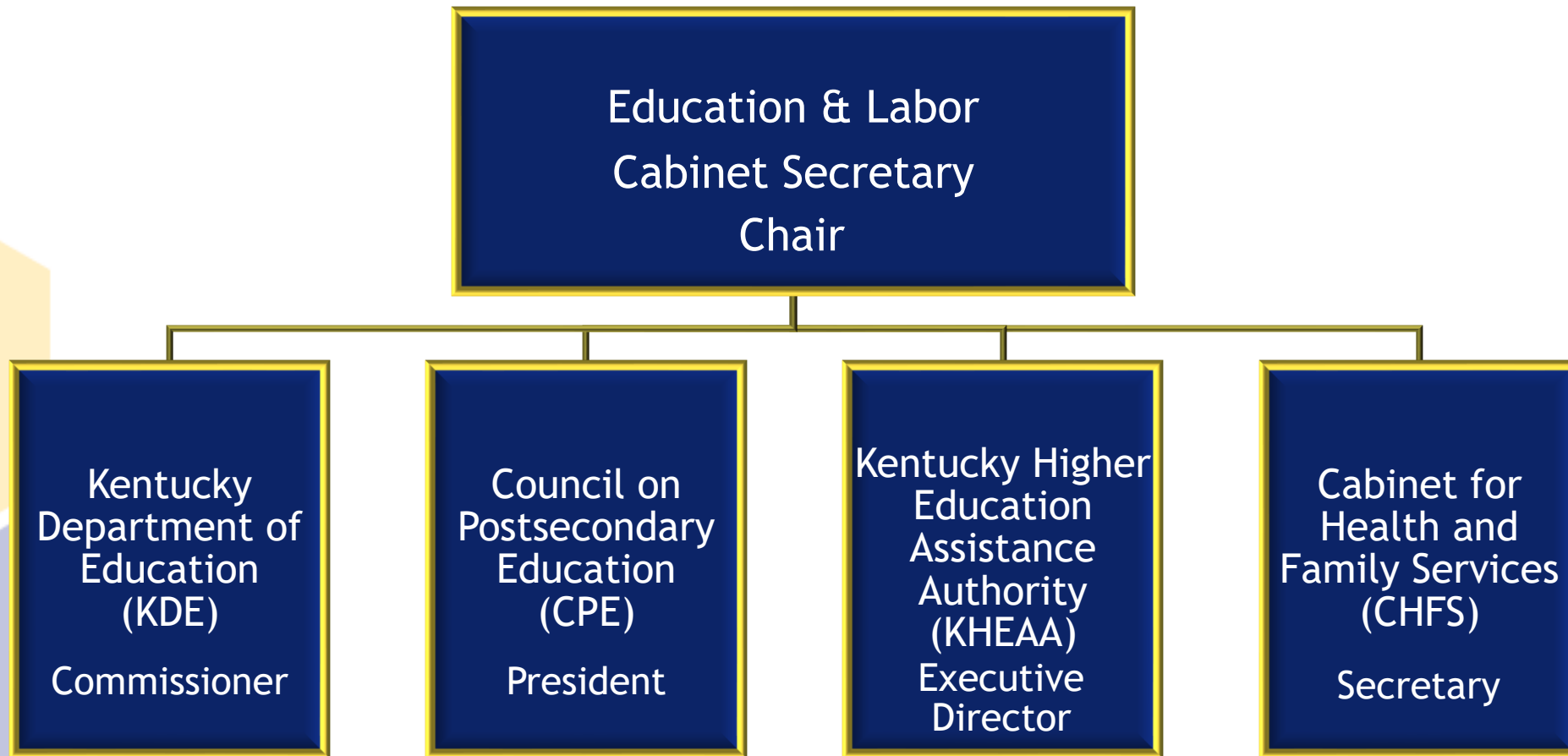
The Kentucky Center for Statistics (KYSTATS) collects and links data to evaluate education and workforce efforts in the Commonwealth. This includes developing reports, responding to research requests, and providing statistical data about these *so policymakers, practitioners, and the general public can make better informed decisions.*

# KYSTATS LEGISLATION

KYSTATS is charged with collecting accurate data in the Kentucky Longitudinal Data System in order to link the data and generate timely reports about student performance through employment to be used to guide decision makers in improving the Commonwealth of Kentucky's education system and training programs.

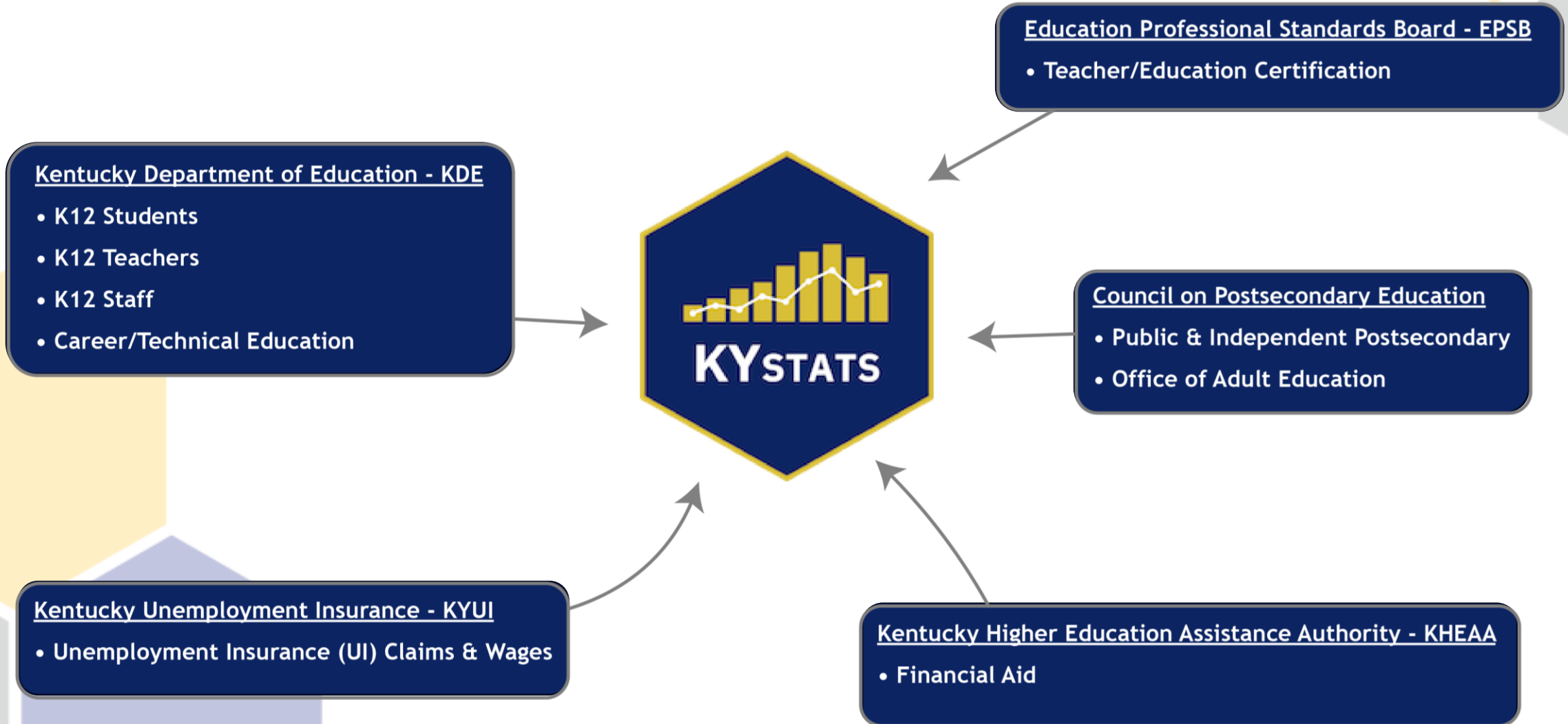


## KYSTATS GOVERNING BOARD



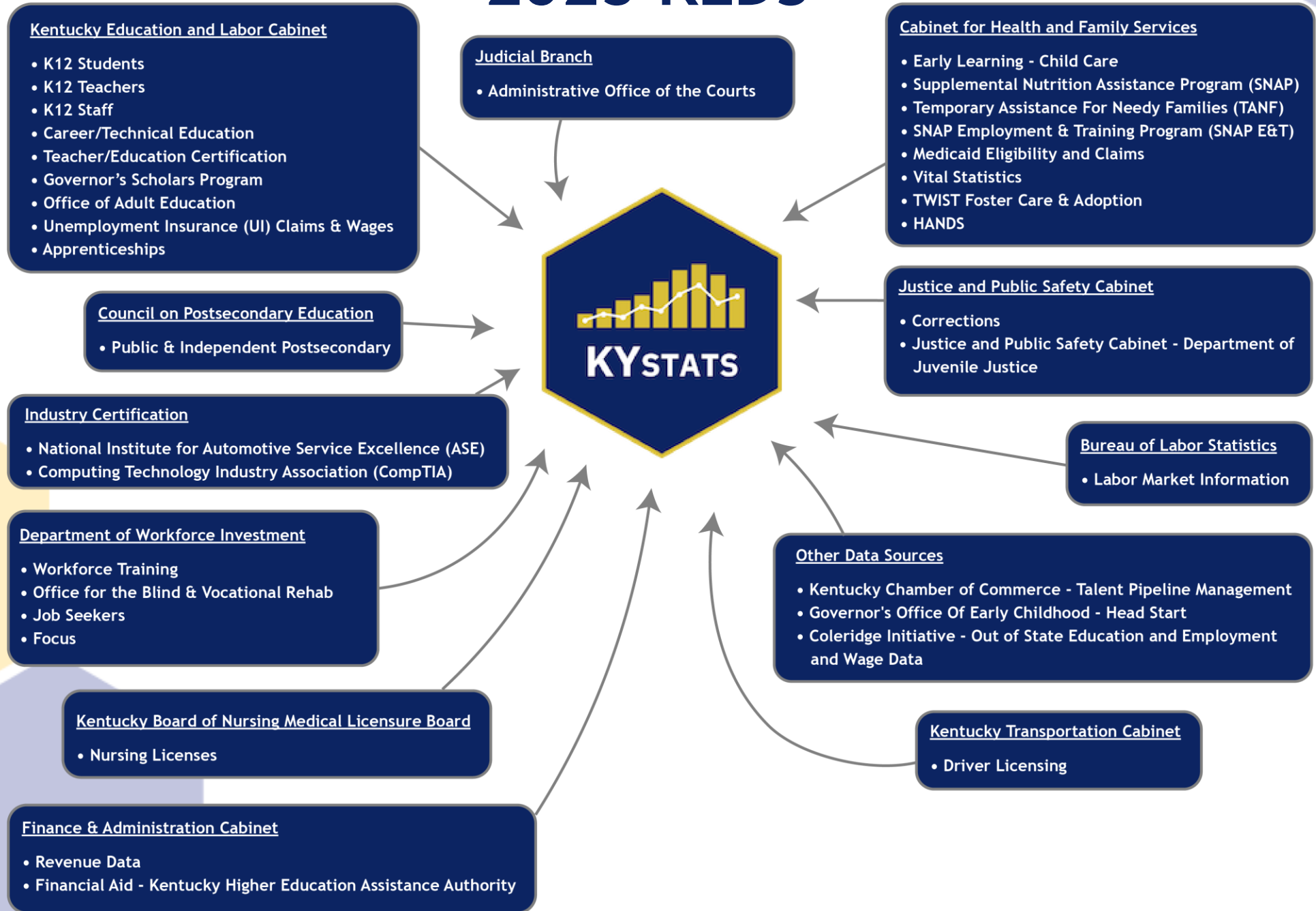


# 2012 Kentucky Longitudinal Data System (KLDS)





# 2025 KLDS



# KLDS TODAY

6,087 Active **Data Elements**

178 Unique **File Types**

Data from 26 **Agencies**

48 Data **Sources**

# Kentucky SLDS

## Data Submission

- K-12
- Career Tech Ed.
- Teacher Licensure
- Adult Ed.
- UI Claims & Wages
- Apprenticeships
- Postsecondary
- Workforce Training
- Revenue
- Financial Aid
- Early Childhood
- SNAP/TANF
- SNAP E&T
- Vital Statistics
- Corrections
- Labor Market Info

Data  
Validating/  
Cleaning,  
Identity  
Resolution,  
& Linking



De-Identified  
Reporting  
Warehouse

## Data Uses

- Reports
- Analyses
- Evaluations
- Data Requests
- What Ifs
- Matched Comparisons

# KYSTATS PRODUCTS



## KENTUCKY CENTER FOR STATISTICS

Uniting our data. Informing our Commonwealth.

[\[Provider Log In\]](#)

[About KYSTATS](#) [Reports](#) [Labor Market Information](#) [Request Data](#) [Blog](#) [Resources](#)

### Reports

The Kentucky Center for Statistics (KYSTATS) collects and links data to evaluate education and workforce efforts in the Commonwealth. This includes developing reports, responding to research requests, and providing statistical data about these efforts so policymakers, agencies, and the general public can make better informed decisions.

Adult Education

Career and Technical Education

Early Childhood

K-12

Postsecondary

Workforce

Archived Reports



### Life Outcomes for High School Experiences

June 2025

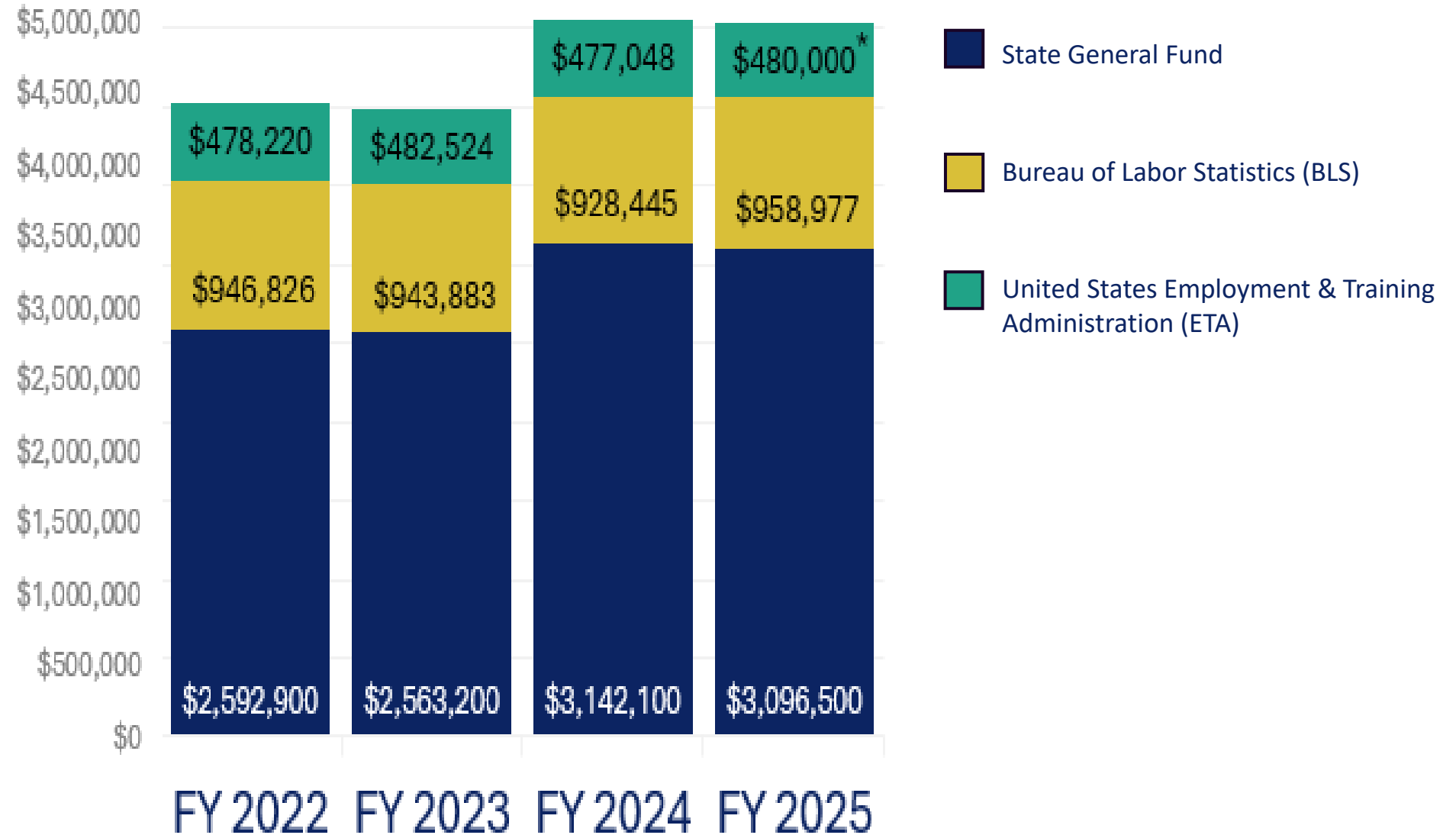
This interactive report is part of the Life Outcomes Series and examines the relationship of high school experiences and educational and wage outcomes for high school graduates.

[K-12](#) [2025](#) [Interactive](#)

[Public Access Data File](#)

[Full Report](#)

# KYSTATS Funding Overview



\* 2025 ETA funds are estimated

# DATA REQUESTS



## KENTUCKY CENTER FOR STATISTICS

Uniting our data. Informing our Commonwealth.

[\[Log Off\]](#)  
[\[Upload Data\]](#)  
[\[General File Upload\]](#)

[About KYSTATS](#)

[Reports](#)

[Labor Market Information](#)

[Request Data](#)

[Blog](#)

[Resources](#)

Search

Search

### KYSTATS Request for De-identified Data

Thank you for your interest in Kentucky data. If the specific data you are requesting are not available through our standard reports or de-identified public use data files, please fill out the form below. Additional information may be required to fulfill approved requests and a Data and Information Sharing Agreement is required for any individual level, de-identified data request to ensure data security and privacy in accordance with state and federal laws. **Workforce data are not available at the individual level.**

#### Individual Level Data Request Form

A Data and Information Sharing Agreement is required for any individual level, de-identified data request to ensure data security and privacy in accordance with state and federal laws.

[Data & Information Sharing Agreement and Exhibits Template](#)

Data request and agreement could take up to 4 months to complete.

KYSTATS operates under a cost recovery model and has developed a reasonable fee schedule for services provided (KRS 151B.133).

See the FAQ document below for examples of individual level data.

#### Aggregate Level Data Request Form

No data sharing agreement needed.

Data request could take up to 3 weeks to complete.

KYSTATS operates under a cost recovery model and has developed a reasonable fee schedule for services provided (KRS 151B.133).

See the FAQ document below for examples of aggregate level data.

- [Data Dictionary](#)
- [Policy Documents](#)
  - [KYSTATS Data Access and Use Policy](#)
  - [KDE Policy Documents](#)
  - [CPE Policy Documents](#)
  - [EPSB Policy Documents](#)
- [PTAC Documents](#)
  - [PTAC's Data Security Checklist](#)
  - [PTAC's Best Practices for Data Destruction](#)
- [FERPA](#)
  - Please refer to The U.S. Department of Education, Family Policy Compliance Office's [Guidance for Reasonable Methods and Written Agreements](#) for additional information on requirements for data sharing under the Family Educational Rights and Privacy Act (FERPA).
- [Contact Us](#)
- [FAQs](#)

<https://kystats.ky.gov/Reports/DataRequest>

# Ready to Learn More?

[kystats.ky.gov](http://kystats.ky.gov)  
[@kystats](https://twitter.com/kystats)



Matt Berry, Ph.D.  
Executive Director  
[matt.berry@ky.gov](mailto:matt.berry@ky.gov)