



EASTERN KENTUCKY FLOODING

Kentucky River at Jackson

All hands on deck:

- *Dept of Highways*
- *Dept of Vehicle Regulation*
- *Dept of Rural and Municipal Aid*
- *Dept of Aviation*
- *State Highway Engineer's Office*
- *Secretary's Office of Safety*

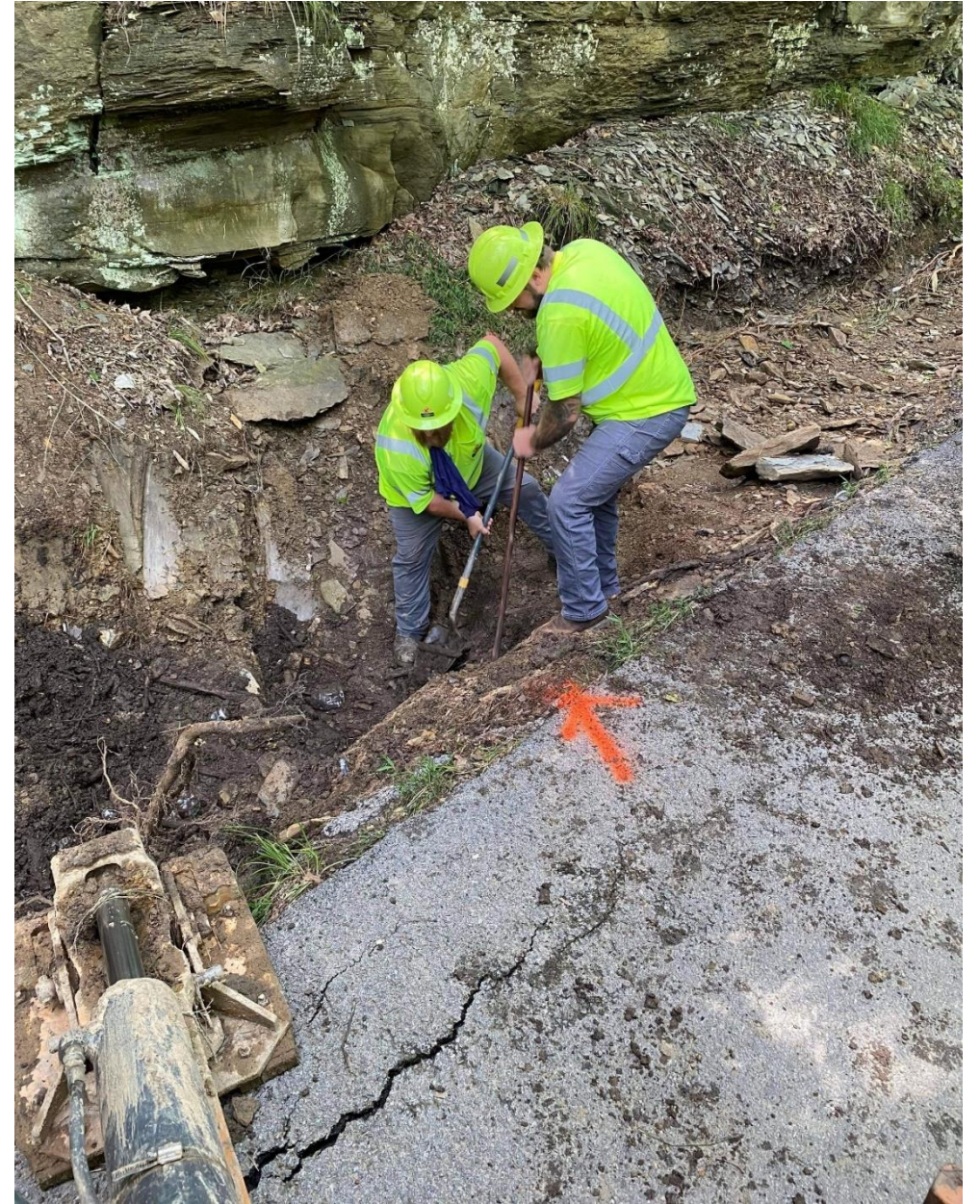
District 9 trucks
ready to render aid



Kentucky Mobilizes

At least 180 DOH personnel from Districts 1 thru 9 have deployed to Eastern Kentucky to support Districts 10, 11 and 12.

More volunteered and are on standby



Personnel included:

- Engineers
- Equipment operators
- Entire maintenance crews
- Bridge specialists
- Mechanics



Knott Mine
water delivery

Equipment they brought included:

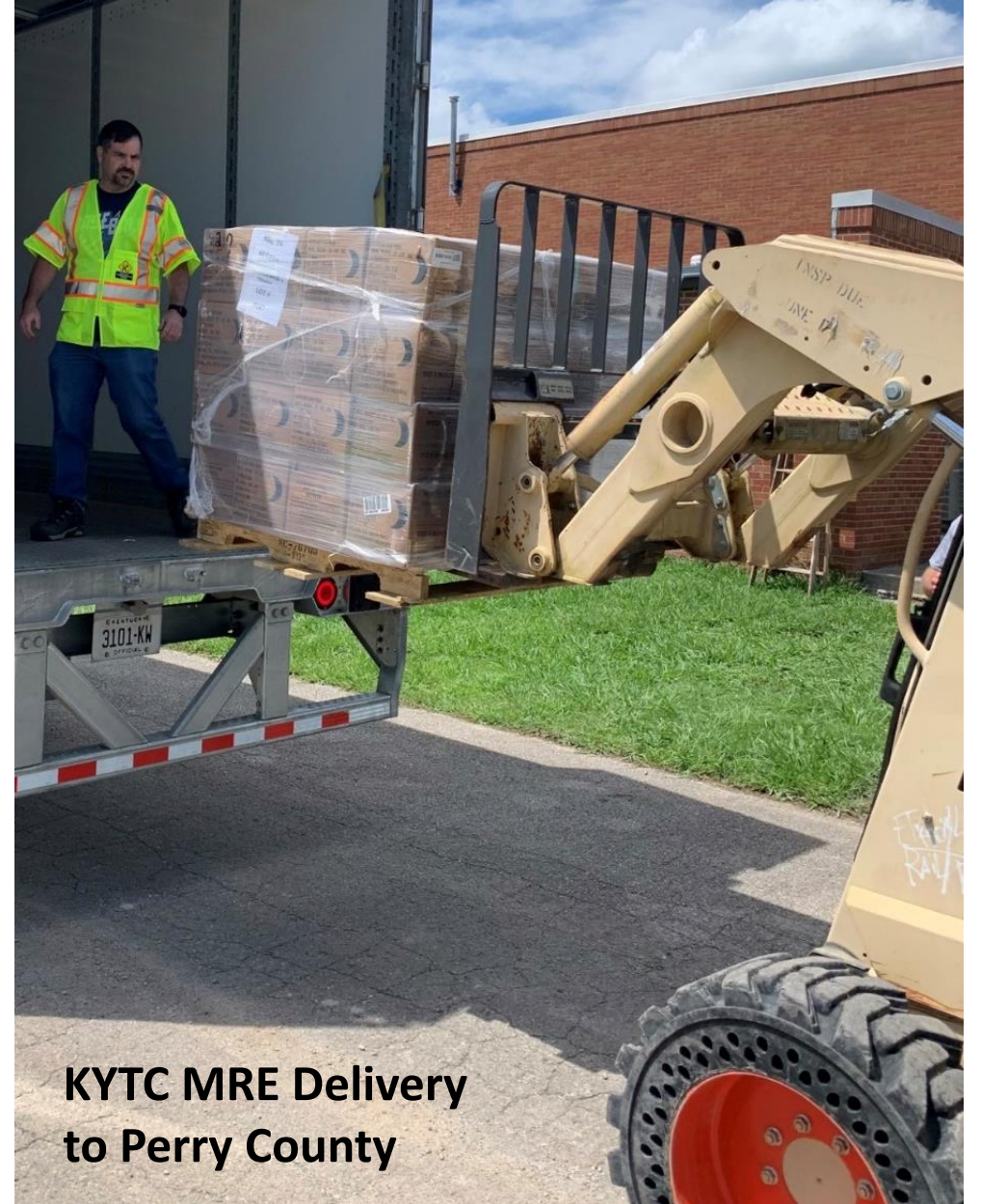
- Backhoes
- Dump trucks
- Semi-tractors
- Excavators
- Skid steers
- Pavers
- Rollers
- Culvert cleaner
- Sign truck with a post driver



**District 11
Oneida Crew
CLAY COUNTY**

KYTC personnel were instrumental in transporting critical goods and equipment into the area:

- **Water**
- **Meals Ready to Eat (MRE)**
- **Cots**
- **Travel trailers for shelter**
- **Work trailers**



**KYTC MRE Delivery
to Perry County**

Stefanie Crask, a Dept of Aviation pilot, flew to Nashville to pick up a valve that was essential to reopening Buckhorn Lake State Resort Park for use as a shelter.



KY Dept of Aviation

POPUP Licensing Services

- Popup Driver Licensing services in 6 locations in 5 counties.
- Routine licensing services offered, plus free replacement of driver's licenses, ID cards.



KYTC crews working not just on clearing state routes but also helping overwhelmed counties clear local roads.

- Executed debris removal and oversight/inspection contracts.
- Cities/counties were offered the opportunity to “piggyback” on state contract through a mutual aid agreement.





**Highway District 12
Washed Out Road**



**Department of Highways
District 10 office
JACKSON, KY**



**Chavies School Road
PERRY COUNTY**

KY 7

LETCHER COUNTY



KNOTT COUNTY
Bridge Pier at Wolfpen Creek Road
Over Little Carr Fork



LETCHER COUNTY
Bridge With Trailer



KY 451

PERRY COUNTY





KY 451

PERRY COUNTY



Ky 267

KY 267

PERRY COUNTY

House in
LETCHER COUNTY



District 12





Debris Removal
WHITESBURG



**KYTC Property Damage
District 10 Sign Shop
BREATHITT COUNTY**



**LETCHER COUNTY
Maintenance Facility**



**LETCHER COUNTY
Maintenance Facility**



**LETCHER COUNTY
Maintenance Facility -
Partially cleaned up**

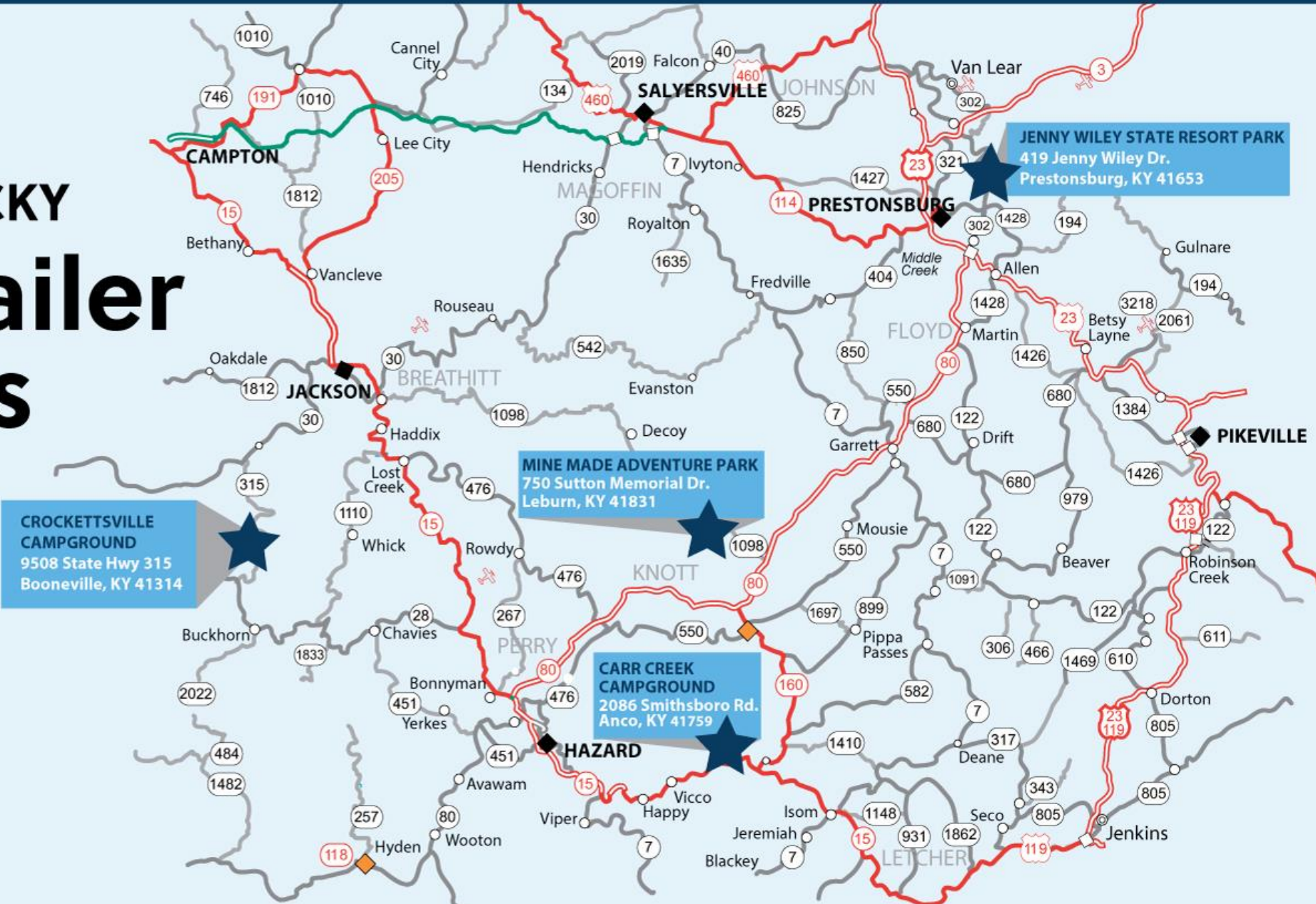


**Still a lot of
work to do!**

EASTERN KENTUCKY

Travel Trailer Locations

AS OF AUGUST 2, 2022





**Trailers at
Jenny Wiley State Park**



**Trailers at
Jenny Wiley State Park**

QUESTIONS?



CONTACT INFORMATION

Kenny Bishop, Legislative Director
kenny.bishop@ky.gov
859-797-9733

transportation.ky.gov
Twitter: @KYTC
Facebook: /kytc120