



Approaching Our Future Together

Get going!



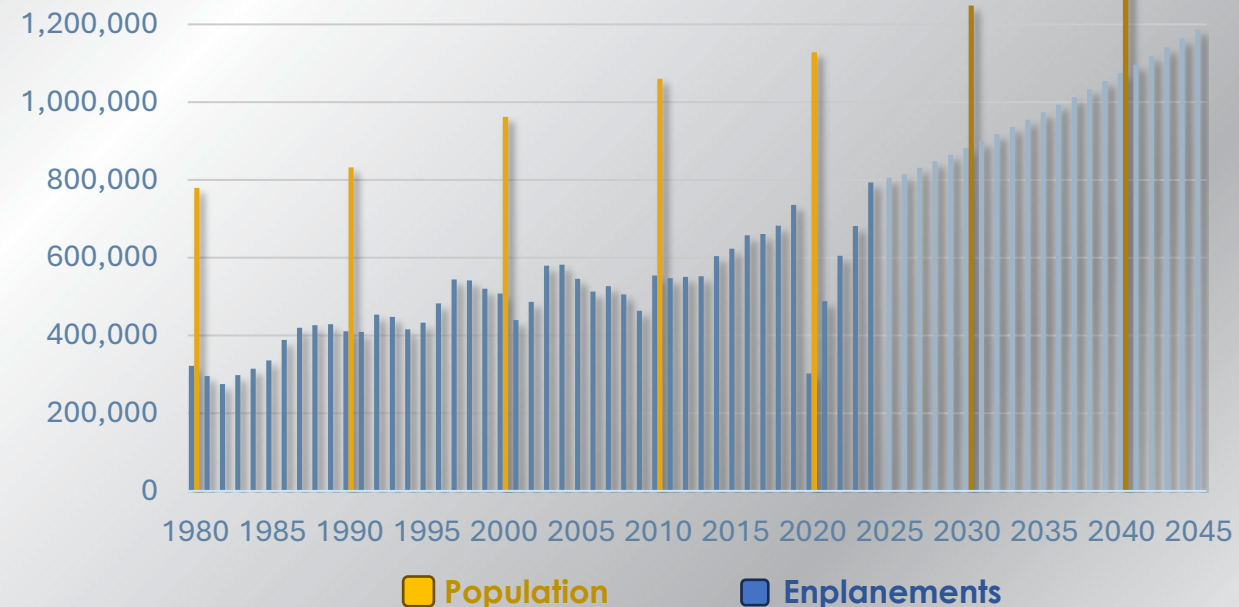
Planning and Development

Master Plan 2024 (Concluded)

- Forecasts airport activity for 10-20 years
- Began in 2022 and incorporated input from industry professionals, community partners and the general public
- Determined significant expansion is needed for terminal, parking and other facilities



Forecasted Enplanements (Passengers boarding an airplane at LEX)

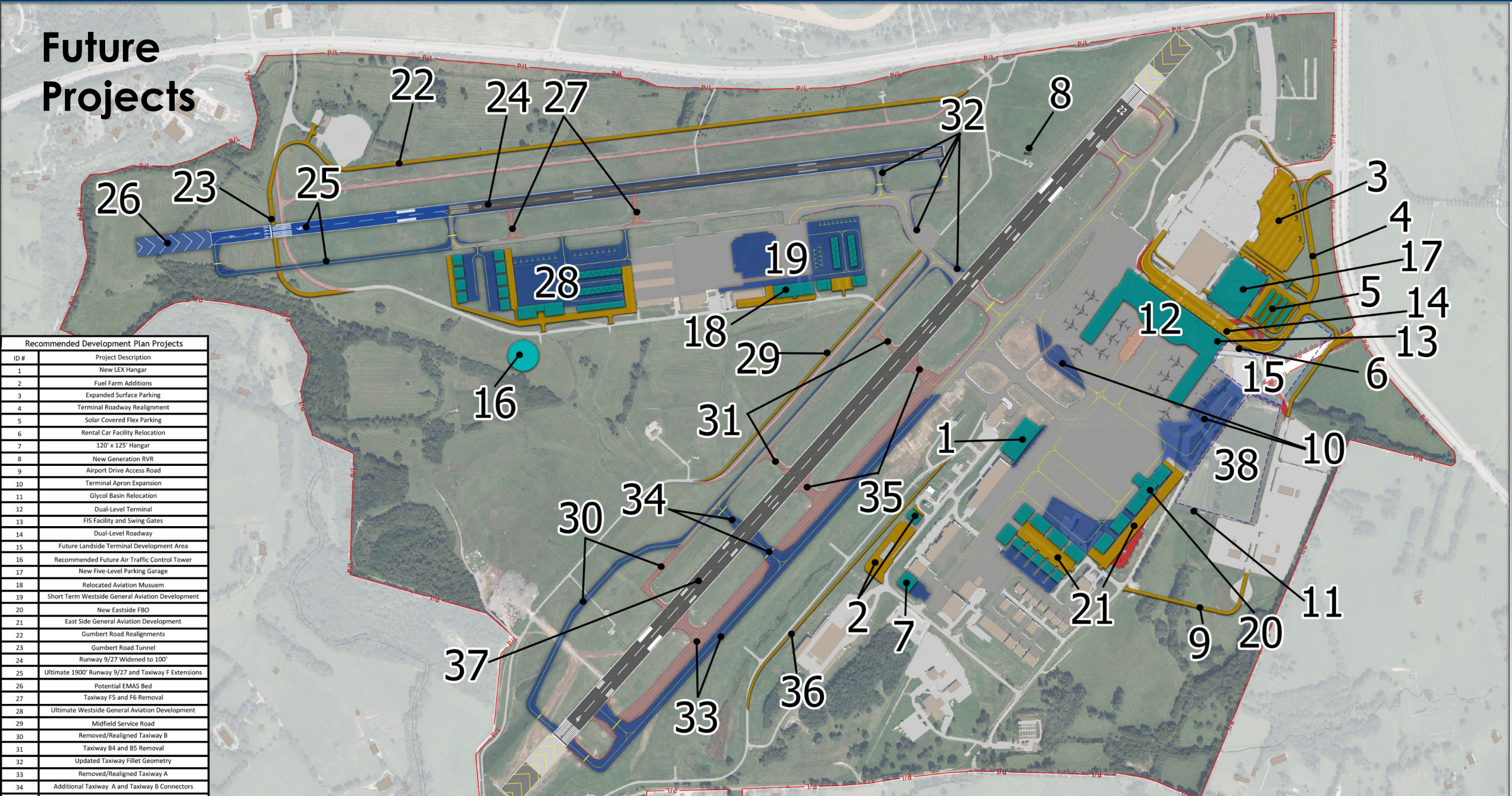


Terminal Area Plan 2025 (Underway)

- Details development of the terminal and surrounding facilities

Future Projects

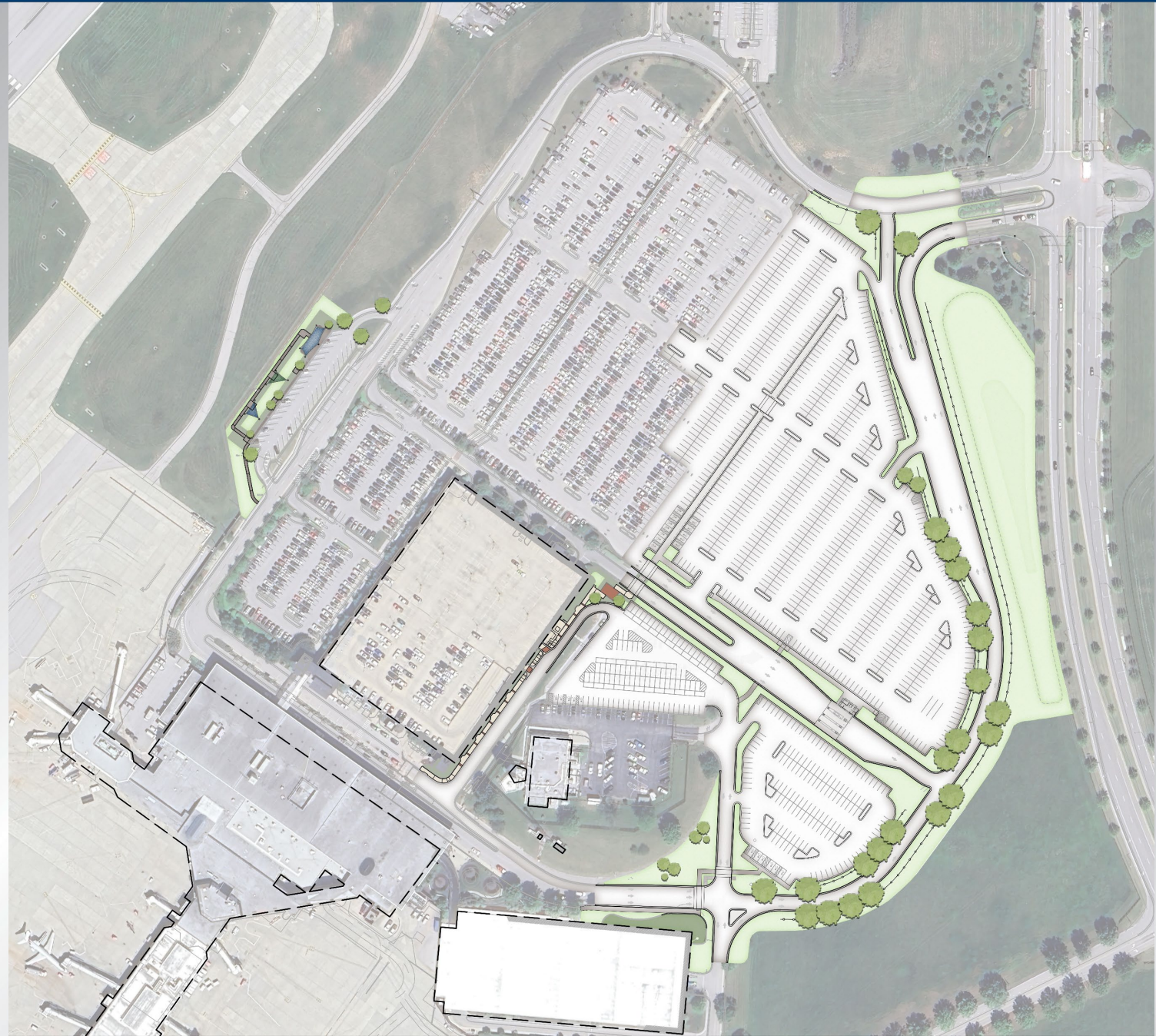
Recommended Development Plan Projects	
ID #	Project Description
1	New LEX Hangar
2	Fuel Farm Additions
3	Expanded Surface Parking
4	Terminal Roadway Realignment
5	Solar Covered Flex Parking
6	Rental Car Facility Relocation
7	120' x 125' Hangar
8	New Generation RVR
9	Airport Drive Access Road
10	Terminal Apron Expansion
11	Glycol Basin Relocation
12	Dual-Level Terminal
13	FIS Facility and Swing Gates
14	Dual-Level Roadway
15	Future Landside Terminal Development Area
16	Recommended Future Air Traffic Control Tower
17	New Five-Level Parking Garage
18	Relocated Aviation Museum
19	Short Term Westside General Aviation Development
20	New Eastside FBO
21	East Side General Aviation Development
22	Gumbert Road Realignments
23	Gumbert Road Tunnel
24	Runway 9/27 Widened to 100'
25	Ultimate 1900' Runway 9/27 and Taxiway F Extensions
26	Potential EMAS Bed
27	Taxiway F5 and F6 Removal
28	Ultimate Westside General Aviation Development
29	Midfield Service Road
30	Removed/Realigned Taxiway B
31	Taxiway B4 and B5 Removal
32	Updated Taxiway Fillet Geometry
33	Removed/Realigned Taxiway A
34	Additional Taxiway A and Taxiway B Connectors



Roadway/Parking Expansion

- Terminal Drive loop reconfiguration
- 815+ parking spaces
- Second covered walkway to terminal
- New exit plaza and additional exit lane
- Technology and equipment enhancements
- Approximate \$17.8 million project

Expected completion: Spring 2026



Air Traffic Control Tower Relocation

- FAA-owned control tower was constructed in 1972
- The tower's location is constraining development
- Space is needed for a second passenger parking garage and ground transportation services
- Airport officials and FAA have selected a proposed location
- Approximate \$85 million project

Future development will be constrained until tower is relocated.



Terminal Expansion



Existing Terminal Area



Future Terminal Area Concept

Blue Grass Airport Economic Impact



4,745
Jobs



\$180 Million
Annual Payroll



\$709 Million
Annual Economic Output

Questions?

Thank you!

