

County Clerk Modernization Task Force

July 21st, 2021



An  VERTICALS company





BUSINESS INFORMATION SYSTEMS

WHO WE ARE

FOUNDED IN 1977

Located in the Tri-Cities in Upper East Tennessee

MODERN AND GROWING

Part of the i3 Verticals
Public Sector

OUR TEAM

150+ team members located in the Tri-Cities, with over 1,000 total i3 team members across the country.

WHAT WE DO



MV Solutions

Vehicle Title and Registration, Insurance
Verification, Inventory Management



RMS Solutions

Land, Vital, Military, Lien and Misc. records



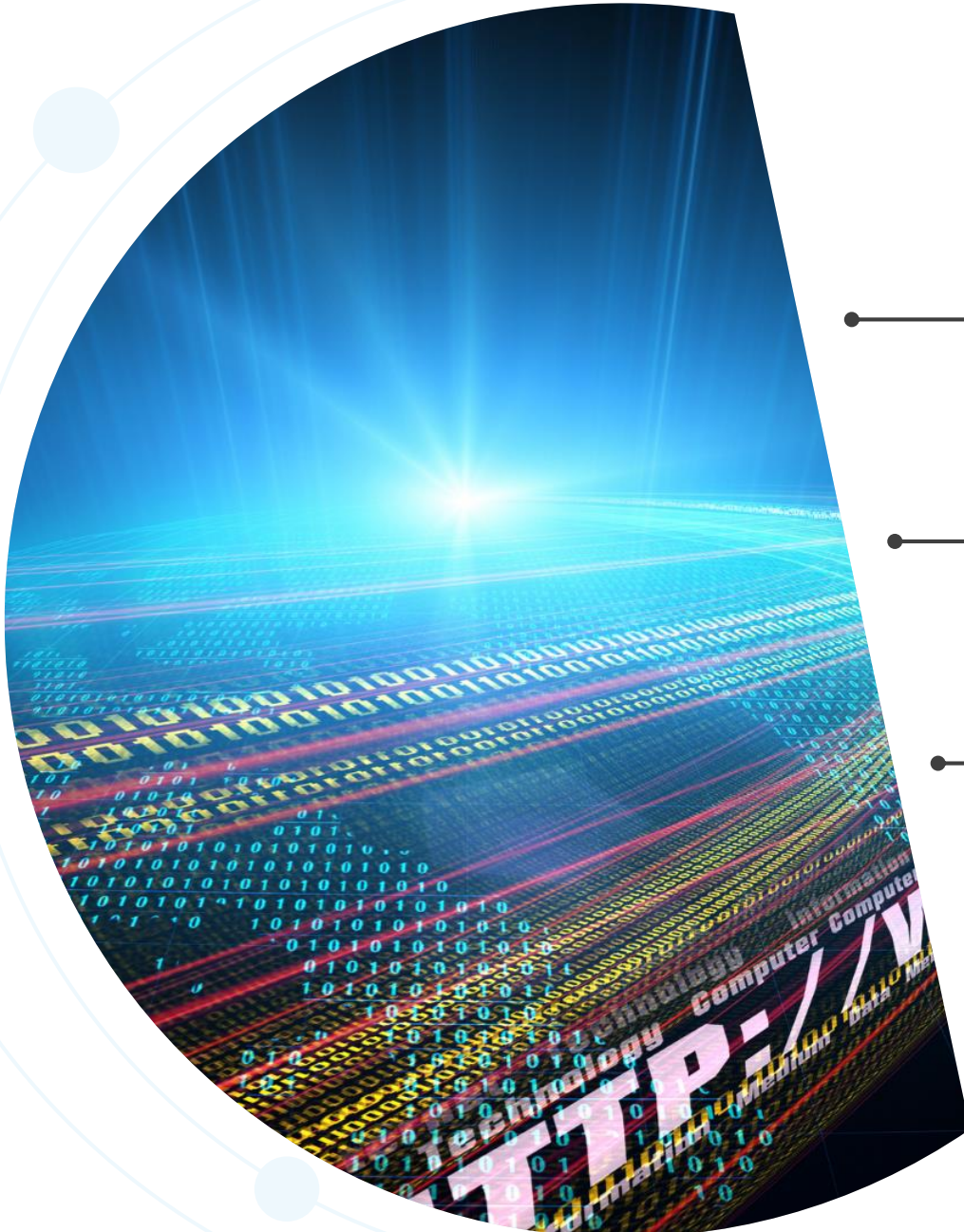
Tax Solutions

Billing and Collections, CAMA, Bill Printing
and Mailing



Payment Solutions

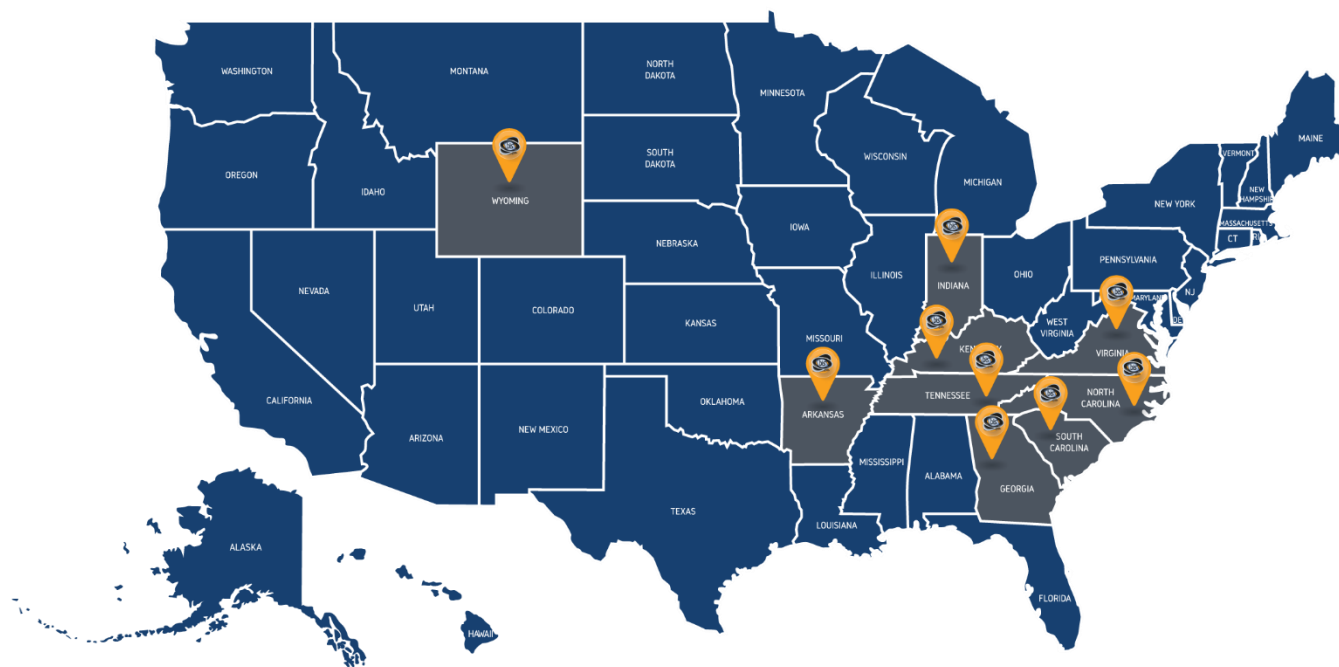
Counter, Online, IVR, Kiosk



WHO WE SERVE

Our Customers Include...

Nearly 1,000 offices in nine states.



WHAT ABOUT KENTUCKY



We



KY County Clerks...

Our solutions in Kentucky include Land Records Management, Vital Records Management, Lien Recording, Delinquent Tax Management, E-recording, Payment Solutions and Kiosk Solutions.

72

Payment

9

RMS

THE REGISTRY RMS

ABOUT

State-of-the-art Records Management System that can be tailored to meet the needs of an office's workflow. Encompasses cashiering, scanning, indexing, and retrieval.

WEB SERVICES

E-Recording, Professional Access (Free or Pay Wall), Recording Alert, Copy Requests and more...

CUSTOMERS

Jefferson County, Kenton County, Fayette County



THE REGISTRY WORKFLOW

Recording

Document is reviewed and cashiered. Recording numbers are assigned, label generated and record inserted into database.



Scanning

System associates the scanned image with the database record and saves image to server. OCR functions applied.



Indexing

Data is input including GT / GT and legal description. This data is saved into relational database tables and tied to the transaction by unique document #.



Searching

Numerous access and search methods available.



Access Controls

Image and Data



PCI DSS
Certified

SO, HOW SECURE ARE WE...

Redundant Backups

Multiple Offsite Copies



Obfuscate Data / Image Versioning

Sensitive data and redaction

TELL US ABOUT E-RECORDING



2005

First document successfully
E-Recorded in Wilson
County, Tennessee

1991

The Registry v1 launched

2021

78 Counties Currently E-Recording
4,200,000+ Documents E-Recorded

E-RECORDING MODELS



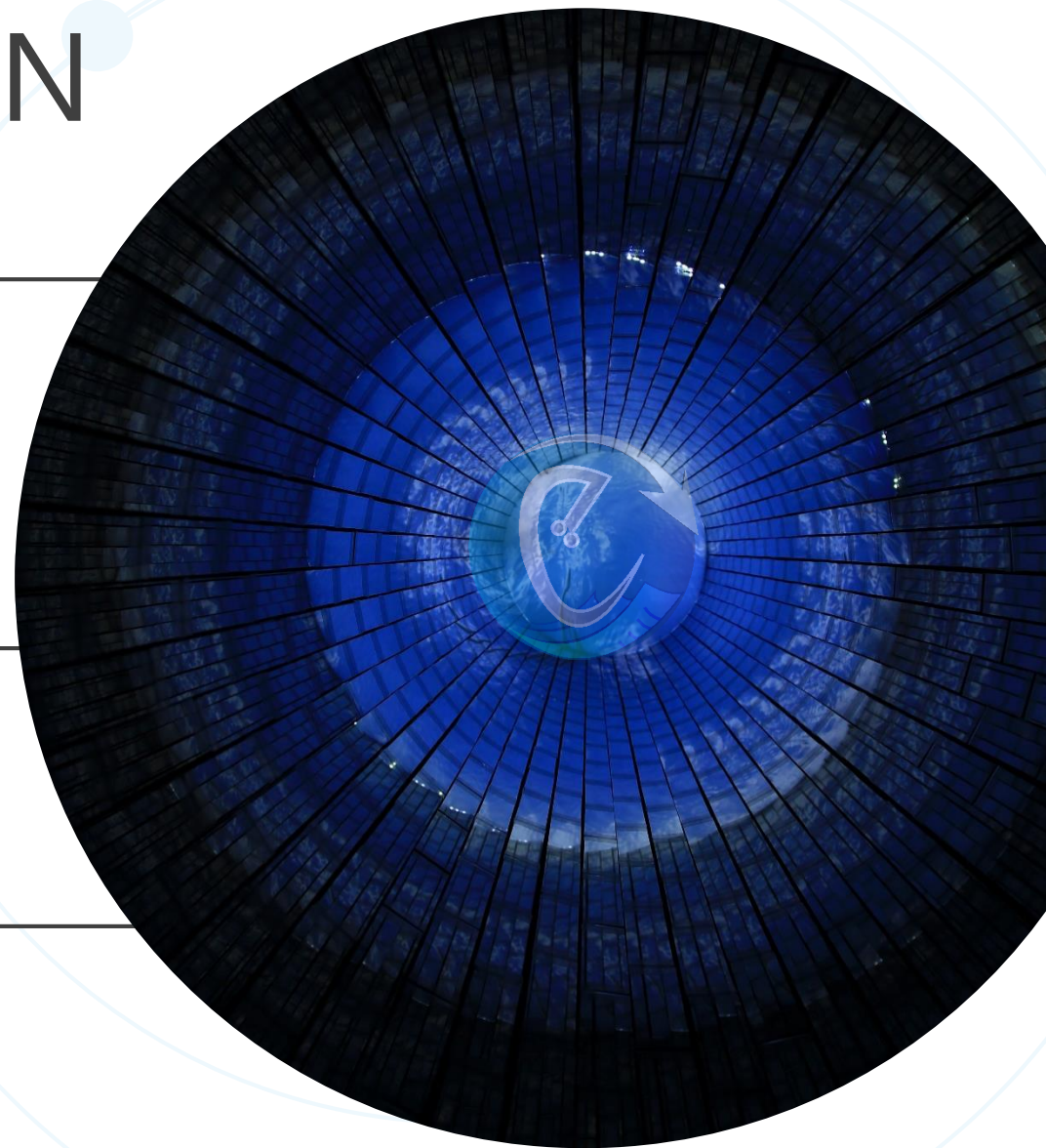
PARTNER INTEGRATION

simplifile[®]

by ICE Mortgage Technology



CSC



PACKAGE FLOW



STEP 1

Document prepared by attorney or title company and package submitted through vendor service.



STEP 2

Vendor delivers submitted package to BIS web portal.



STEP 3

BIS web portal securely delivers package to county for recording.



STEP 4

Recorded package returned to vendor through web portal.



WHAT DOES IT COST?



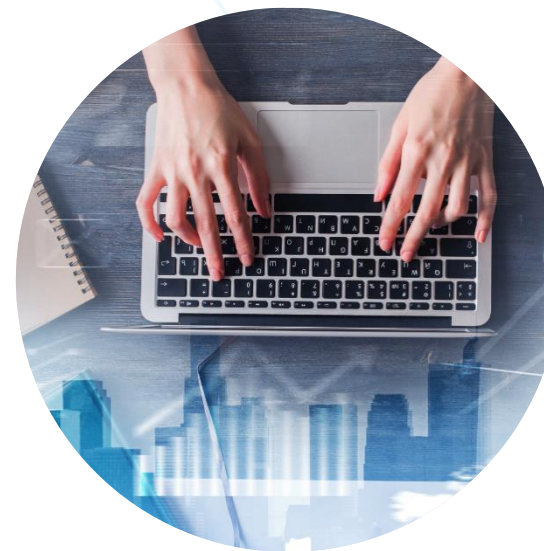
THE REGISTRY

Five to six figure purchase price with annual maintenance.



CONTRACTS

Contracts made with office holder or with the county. Purchase and maintenance contracts are required for The Registry while only MOU and Joinder Agreements are required for e-Recording.



E-RECORDING

Free to implement and no re-occurring cost to the county.

THANK YOU

Questions?



An  VERTICALS company