

TEAM KENTUCKY[®]

EDUCATION AND
LABOR CABINET

Executive Branch Efficiency Task Force

Monday, August 22, 2022

Secretary Jamie Link

Deputy Secretary Vickie L. Wise

Chief of Staff and General Counsel Sam Flynn

Kentucky Education & Labor Cabinet

The Kentucky General Assembly enacted legislation supported by the Governor to create the Education and Labor Cabinet, effective July 1, 2022.

The Education and Labor Cabinet's role is to:

- Promote friendly and cooperative relations between employers and employees
- Publish workforce statistics and encourage the development of new industries
- Promote fair and inclusive employment and education
- Foster the welfare of both wage earners and industries
- Improve working and living conditions of employees through education and opportunity
- Identify and prevent workplace accidents and ensure sanitary conditions in places of employment
- Provide safety net programs for unemployment insurance and workers' compensation benefits

James W. Link
Secretary

Vickie L. Wise
Deputy Secretary

Sam Flynn
Chief of Staff and
General Counsel

Vision

The Education and Labor Cabinet fosters opportunities for lifelong learning, training and career services while protecting the well-being of Kentucky's workforce.

Mission

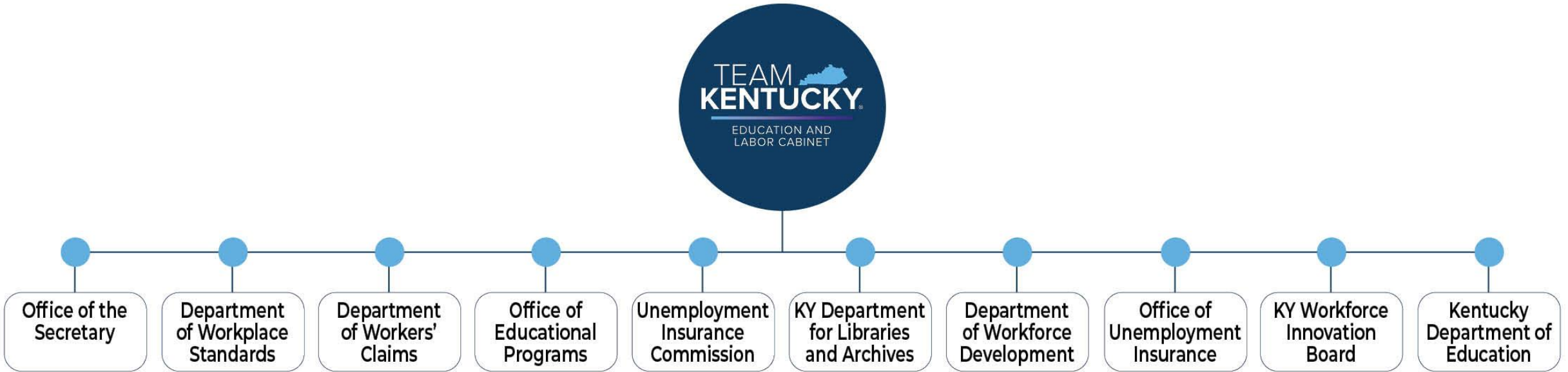
Educate – Promote early childhood through 12th grade, postsecondary education, adult education and credentialed training to provide lifelong opportunities for Kentuckians.

Encourage – Use of resources and data to improve the prosperity of Kentucky's workforce.

Employ – Actively engage employers to drive Kentucky's workforce system by creating opportunities for and removing employment barriers for Kentuckians.

Enforce – Create a culture of accountability to promote best practices, fairness, and compliance with Kentucky's wage and hour, employees' safety, health and worker's compensation requirements.

KELC Organizational Chart



Kentucky Education & Labor Cabinet

Comprised of 10 Major Organizational Units:

- Office of the Secretary
- Department of Workplace Standards
- Department of Workers' Claims
- Office of Educational Programs
- Unemployment Insurance Commission
- Kentucky Department for Libraries and Archives
- Department of Workforce Development
- Office of Unemployment Insurance
- Kentucky Workforce Innovation Board-Attached for Administrative Purposes
- Department of Education-KRS 156.010-Administered by the Commissioner of the Department of Education

Number of Employees (excluding the Department of Education):

1539

Budget Information:

KY Education & Labor Cabinet

Federal

\$514,867,800

General

\$90,837,428

Restricted

\$37,150,800

Workers' Compensation Funding

Commission

\$194,606,000

Tobacco Settlement

\$15,633,380

TOTAL FUNDING - \$853,095,408

(Dept. of Ed. funding excluded)

Office of the Secretary

Purpose: To provide all administrative & support services for all Cabinet agencies.

- Office of Administrative Services
- Office of Legal Services
- Office of Legislative Services
- Office of Policy and Audit
- Office of Technology Services
- Office of Communications
- Office of the Kentucky Center for Statistics
- Early Childhood Advisory Council*
- Governor's School for Entrepreneurs Program*
- Governor's Scholars Program*
- Board of the Kentucky Center for Statistics*
- Foundation for Adult Education*

Number of Employees

207

*Attached for Administrative Purposes

Budget Information:

Office of the Secretary

Federal

\$6,636,800

General

\$13,156,400

Restricted

\$15,695,900

Workers' Compensation Funding

Commission

\$9,400,000

Tobacco Settlement

\$15,633,380

TOTAL FUNDING - \$60,522,480

Department of Workplace Standards

Purpose: To promote compliance with Occupational Safety and Health (OSH) standards, enforce and provide training on workplace safety, wage and hour, child labor and other labor laws

- Division of Occupational Safety and Health Compliance
- Division of Wages and Hours
- Division of Occupational Safety and Health Education and Training

Number of Employees

92

Budget Information:

Dept. of Workplace Standards

General

\$1,898,100

Federal

\$4,467,300

**Workers' Compensation Funding
Commission**

\$8,698,200

TOTAL FUNDING - \$15,063,600

Department of Workers' Claims

Purpose: To administer the Kentucky Workers' Compensation Program, which provides benefits to workers who are injured or who become ill on the job.

- Division of Claims Processing
- Division of Security and Compliance
- Division of Specialists and Medical Services
- Division of Workers' Compensation Funds
- Office of Administrative Law Judges
- Workers' Compensation Board

Number of Employees
119

Budget Information:

Dept. of Workers' Claims

**Workers' Compensation Funding
Commission**

\$61,552,300*

* Funding covers both administrative and benefits paid to claimants.

Office of Educational Programs

Purpose: To coordinate educational resources and information and facilitate job placement with partnering employers.

Number of Positions

3

Budget Information:

Office of Educational Programs

General

\$5,000,000*

* Current funding is from the Budget Line Item in HB 1 for the Everybody Counts Initiative.

Kentucky Department for Libraries and Archives

Purpose: To support and promote access to library services and educational resources to ensure documentation of government activity is created, preserved and made available for public use.

- Division of Archives and Records Management
- Division of Library Services

Number of Employees

60

Budget Information:

Dept. for Libraries and Archives

General

\$10,890,700*

Federal

\$3,482,600

Restricted

\$4,060,400*

TOTAL FUNDING - \$18,433,700

* These funding sources are split between Direct Local Aid and KDLA administrative and program funds.

Department of Workforce Development

Purpose: To help Kentuckians improve their quality of life through education, training and career services.

- Office of Vocational Rehabilitation
- Office of Employer and Apprenticeship Services
- Office of Adult Education
- Career Development Office
- Office of the Kentucky Workforce Innovation Board
- Division of Technical Assistance
- Kentucky Apprenticeship Council*

Number of Employees
598

*Attached for Administrative Purposes

Budget Information:

Dept. of Workforce Development

General

\$42,764,328

Federal

\$148,607,000

Restricted

\$12,915,300

TOTAL FUNDING - \$204,286,628

Office of Unemployment Insurance

Purpose: To provide unemployment insurance benefits through temporary financial assistance to workers unemployed through no fault of their own.

- Unemployment Services Call Center Branch
- Benefits Branch
- Adjudication Branch
- Unemployment Insurance Appeals Hearing Branch
- Unemployment Insurance Integrity Branch
- Tax Audit Branch
- Tax Enforcement Branch
- Quality Control Branch
- Trust Fund Accounting Branch

Number of Employees
251

Budget Information:

Office of Unemployment Ins.

Federal

\$33,459,100

Trust Funds

\$316,335,100

TOTAL FUNDING - \$349,794,200

Unemployment Insurance Commission

Purpose: To review and determine unemployment insurance appeals in accordance with KRS 341.430.

Number of Employees

15

Budget Information:

UI Commission

Federal

\$1,450,000*

* The Commission is funded by the same UI Federal Admin grant as the Office of UI.

Agencies Attached to KELC for Administrative Purposes:

- Kentucky Occupational Safety and Health Review Commission
- State Labor Relations Board
- Workers' Compensation Funding Commission
- Kentucky Occupational Safety and Health Standards Board
- Kentucky Environmental Education Council
- Kentucky Geographic Education Board
- Board of Directors for the Center for School Safety
- Kentucky Commission on Proprietary Education
- Employers' Mutual Insurance Authority
- Workers' Compensation Nominating Committee
- Kentucky Commission on the Deaf and Hard of Hearing
- Kentucky Educational Television
- Kentucky Work Ready Skills Advisory Committee

Number of Employees

197

Budget Information:

Other Agencies

General

\$17,127,900

Federal

\$429,900

Workers' Compensation Funding Commission

\$114,955,500

Restricted

\$4,479,200

TOTAL FUNDING - \$136,992,500