

TOURISM, ARTS AND
HERITAGE CABINET

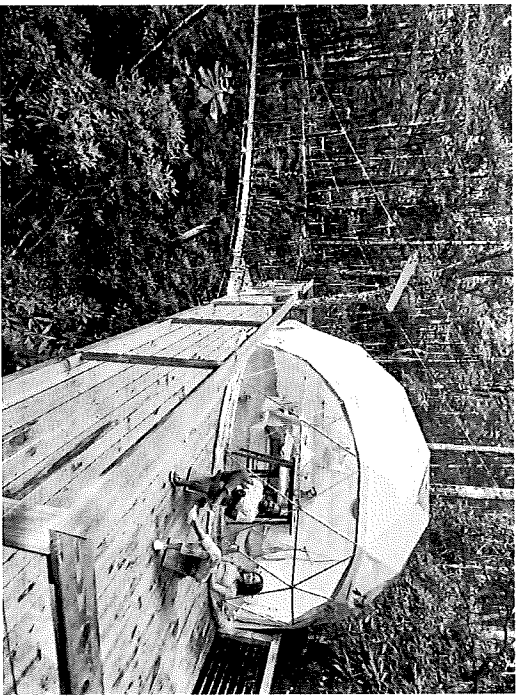
EXECUTIVE BRANCH EFFICIENCY TASK FORCE
November 14, 2022

KENTUCKY TOURISM, ARTS AND HERITAGE CABINET
SECRETARY MICHAEL E. BERRY

THE DEPARTMENT OF PARKS
COMMISSIONER RUSS MEYER

OUR MISSION

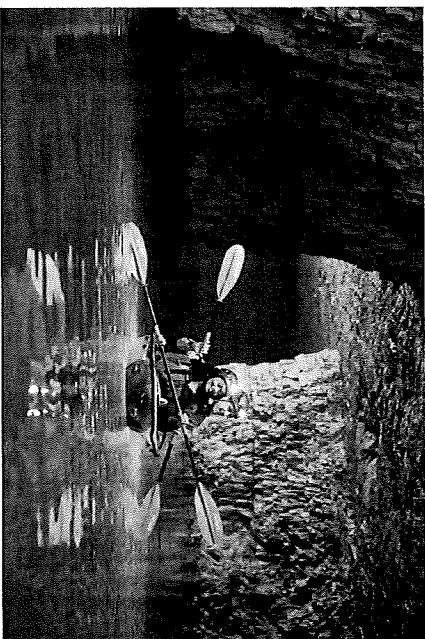
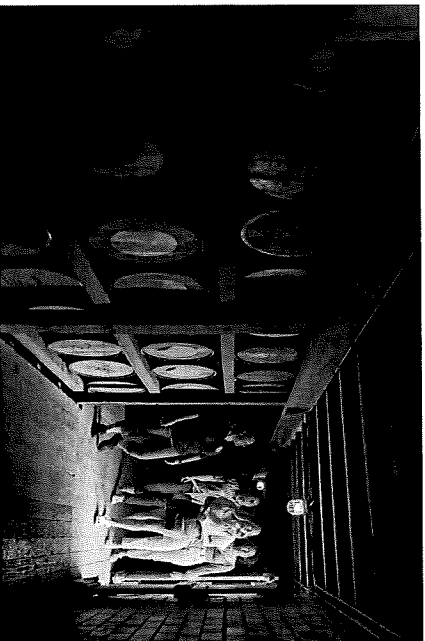
Support the promotion and development of Kentucky tourism, arts and heritage as a mechanism to foster economic growth, education and employment for communities throughout the commonwealth while appealing as a destination to a diverse audience at home, nationally and internationally.



CABINET OVERVIEW

The Kentucky Tourism, Arts and Heritage Cabinet is dedicated to fostering and promoting the state's rich heritage as well as continuing Kentucky's long history of being a premier travel destination for all travelers to enjoy.

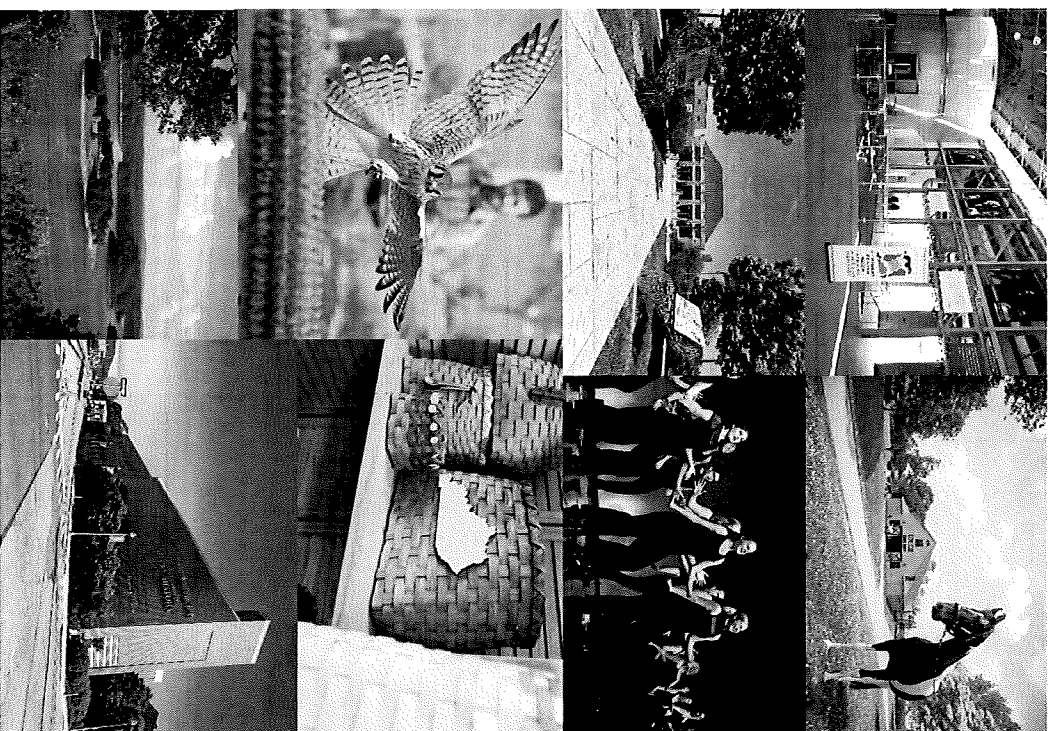
The Cabinet serves as Kentucky's top tourism agency and collaborates with local tourism partners to coordinate tourism, arts and heritage efforts through legislation, tourism development, and marketing/outreach.



11/14/2022

CABINET AGENCIES

- Department of Fish and Wildlife Resources
- Department of Parks
- Department of Tourism
- Governor's School for the Arts
- Kentucky Artisan Center in Berea
- Kentucky Arts Council
- Kentucky Center for African American Heritage
- Kentucky Historical Society
- Kentucky Humanities Council
- Kentucky Heritage Council
- Kentucky Horse Park
- Kentucky Performing Arts
- Kentucky State Fair Board (Kentucky Venues)



TOURISM, ARTS & HERITAGE CABINET

OFFICE OF THE
SECRETARY

- OFFICE OF FINANCE
- OFFICE OF LEGAL AFFAIRS
- OFFICE OF GOV. RELATIONS AND ADMINISTRATION
- OFFICE OF HUMAN RESOURCES
- OFFICE OF PUBLIC AFFAIRS AND CONSUMER SERVICES
- OFFICE OF ARTS AND CULTURAL HERITAGE

KY STATE FAIR BOARD
KY HERITAGE COUNCIL
KY ARTS COUNCIL
KY HISTORICAL SOCIETY
KENTUCKY CENTER FOR THE ARTS
KY FISH & WILDLIFE RESOURCES
KY HORSE PARK
KY DEPT OF PARKS
KY ARTISANS CENTER AT BERTHA
KY DEPT OF TOURISM
KY AFRICAN AMERICAN HERITAGE CENTER
KY HUMANITIES COUNCIL

KY PRESERVATION BOARD

MUSEUMS
ORAL HISTORY & ED OUTREACH
RESEARCH & PUBLICATIONS
ADMINISTRATION

LABOR ENGAGEMENT DIV
ADMIN SERV DIV

SUPPORT SERVICES DIVISION
BLOOD & GROUNDWATER DIVISION
OPERATIONAL SERVICES DIVISION

DIVISION OF PARKS OPERATIONS
DIVISION OF FISHING
DIVISION OF ENVIRONMENTAL MANAGEMENT

DIVISION OF COMMUNICATIONS & PUBLIC RELATIONS
DIVISION OF TOURISM DEVELOPMENT
DIVISION OF TOURISM SERVICES

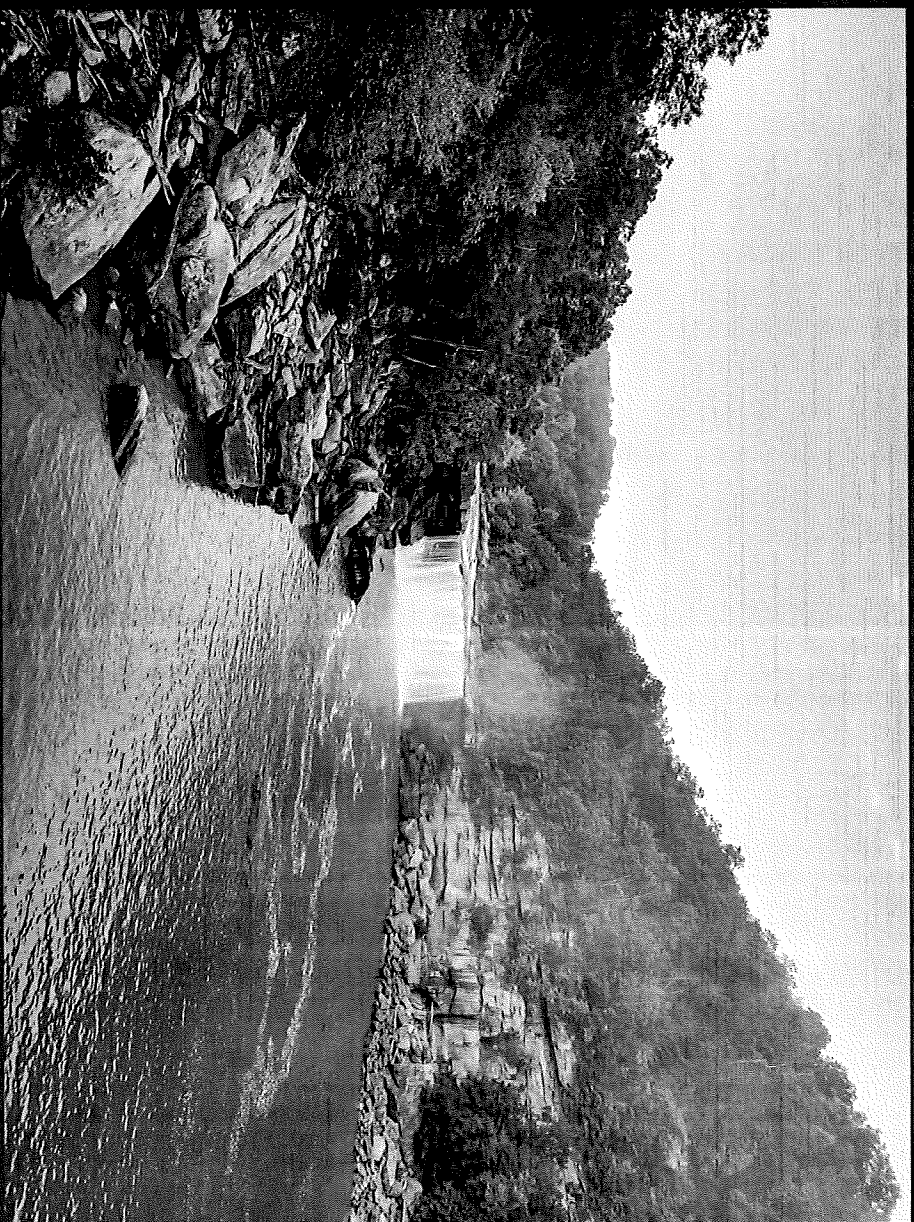
DIVISION OF MARKETING

- FAIR BOARD MEMBERS
- REC OPERATIONS DIVISION
- PUBLIC RELATIONS & MEDIA DIVISION
- SALES DIVISION
- SECURITY & TRAFFIC CONTROL DIVISION
- VENUE SERVICES DIVISION
- CONSULTANT AGENCIES DIVISION
- OFFICE OF ADMIN & IT SERVICES
- OFFICE OF ADMIN & IT SERVICES
- OFFICE OF HR & ACCESS CONTROL
- EXPOSITION DIVISION
- VENTURE CENTER DIVISION

- LABOR ENGAGEMENT DIV
- ADMIN SERV DIV
- SCIENTIFIC INSTRUMENTS & TECHNOLOGY DIV
- FISHERIES DIV
- INFO & EDUC DIV
- WILDLIFE DIV
- MARKETING DIV

- DIVISION OF PARKS OPERATIONS
- DIVISION OF FISHING
- DIVISION OF ENVIRONMENTAL MANAGEMENT
- DIVISION OF FACILITIES
- DIVISION OF FINANCIAL OPS
- DIVISION OF HUMAN RESOURCES
- DIVISION OF PARKERS
- DIVISION OF SALES, MARKETING AND CUSTOMER SERVICE
- DIVISION OF FOOD SERVICES
- DIVISION OF INFORMATION TECHNOLOGY

TOURISM, ARTS AND HERITAGE CABINET



TOURISM, ARTS AND HERITAGE CABINET

FY2022 - FY2023

General Fund: \$3,868,900

Restricted Fund: \$17,500,000 (transient room tax)

Federal Fund: \$92,500,000 (ARPA)

- General Fund (state funds distributed by the agency)
 - Kentucky Center for African American Heritage - \$150,000
 - Friends of the Holt House - \$300,000
- Restricted - Tourism, meeting, and convention Marketing fund (tax receipts imposed under KRS 142.400) - Reported to Governor and LRC by September 1, of each year.
 - Distribute funds to the Regional Marketing and Matching Funds Program (300 KAR 1:010).
- Federal - Tourism Recovery and Investment from the State Fiscal Recovery Fund of the American Rescue Plan Act of 2021 - Report required quarterly to OSBD, LRC by September 1 of each year.
 - Tourism and Destination Marketing Organizations - \$75,000,000
 - Kentucky Science Center - \$500,000
 - Kentucky 4-H Foundation - \$5,000,000
 - Louisville Arena Authority - \$12,000,000

DEPARTMENT OF TOURISM

FY2022 - FY2023

General Fund: \$3,433,700

Restricted Fund: \$22,000

ARPA/SLFRF Funding

Pool #1

\$15 Million

For marketing and promoting
tourism in Kentucky

Pool #2

\$25 Million

Distributed to tourism commissions
for marketing communities

Pool #3

\$25 Million

Distributed to tourism commissions
for attracting meetings and
conventions

Pool #4

\$10 Million

Distributed to tourism commissions
for multi-jurisdiction collaborative
destination marketing

KENTUCKY HERITAGE COUNCIL



KENTUCKY HERITAGE COUNCIL

FY2022 – FY2023

General Fund: \$4,917,500

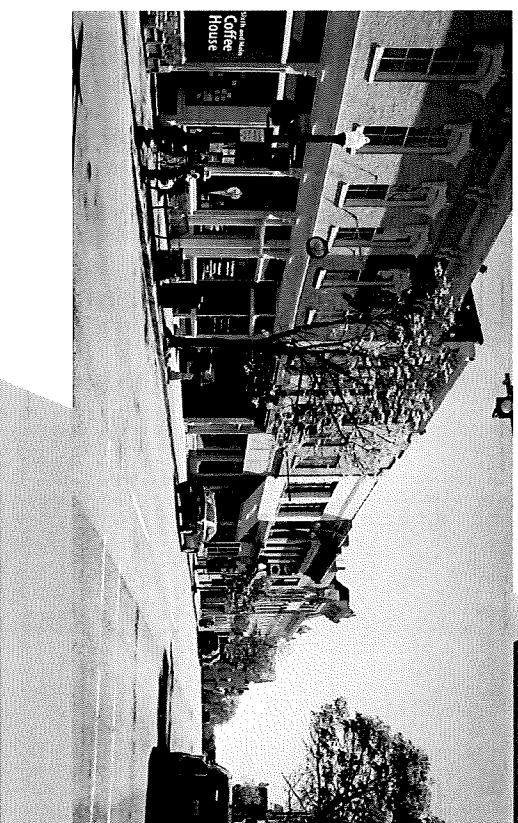
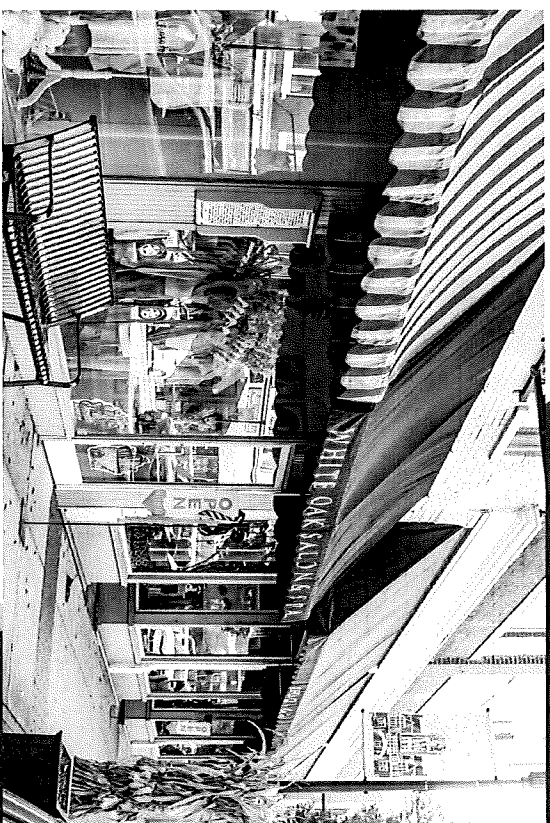
Restricted Fund: \$849,700

Federal Fund: \$1,133,800

- General Fund (state funds distributed by the agency)
 - Kentucky African American Heritage Commission - \$50,000
 - American Battlefield Trust - \$3,300,000 (matching funds)
- Federal Fund - The Kentucky Heritage Council also receives an annual apportionment of the Federal Historic Preservation Fund (HPF) as the State Historic Preservation Office (SHPO). The agency must match the annual apportionment with state funding at a 40% match rate. A minimum of 10% of the annual apportionment must be passed through directly to Certified Local Governments by the agency (SHPO Office) as grants.
 - Reporting to National Park Service Annually
- Historical Preservation Tax Credit Program, utilizes preservation and rehabilitation tax credits intended to serve as financial incentives to encourage private investment in historic buildings. The Tax Credit Program recently raised the overall program cap from \$5 million to \$100 million and the per-project cap from \$400k to \$10

KENTUCKY MAIN STREET PROGRAM

- Bardstown Main Street
- Beattyville Main Street
- Campbellsville Main Street
- Carrollton Main Street
- Catlettsburg Main Street
- Renaissance Covington
- Cynthiana Main Street
- Guthrie Main Street
- LaGrange Main Street
- London Downtown
- Maysville Main Street
- Middlesboro Main Street
- Downtown Morehead Inc.
- Murray Main Street
- Paducah Main Street
- Paintsville Main Street
- Perryville Main Street
- Pikeville Main Street
- Pineville Main Street
- Main Street Salyersville
- Heart of Scottsville
- Shelby Main Street
- Springfield Main Street
- Taylorsville Main Street
- Tri-Cities Main Street
- Williamsburg Main Street





KENTUCKY ARTS COUNCIL

KENTUCKY ARTS COUNCIL

FY2022 – FY2023

General Fund: \$1,797,100

Restricted Fund: \$107,300

Federal Fund: \$809,200

- General Fund (state funds distributed by the agency) – used as federal grant match - \$624,700
- Federal Fund - National Endowment for the Arts federal grant process is based on the following breakdown and is adjudicated by a panel based on each application:
 - Kentucky Arts Partnerships - subgrants to nonprofit organizations
 - Folk Arts Apprenticeships - subgrants to individuals
 - Poetry Out Loud - subgrants to schools/individuals
 - Arts Education - (Teaching Arts Together/ Transportation/Lifelong Learning)Reporting – Current state and federal reporting requirements for agency disbursements are due to the NEA on September 30.
- Annual Report to LRC due in August

KENTUCKY HISTORICAL SOCIETY



KENTUCKY HISTORICAL SOCIETY

- KHS awards two types of grants:
 - **General Fund:** (state funds distributed by the agency): Kentucky Oral History grant awards - \$34,000
 - **Restricted Fund:** Local History Trust Fund – ranges from \$2,500 - \$8,400 (from the taxpayer check-off)
- KHS does not have any pass-through federal funding.



KENTUCKY HUMANITIES COUNCIL



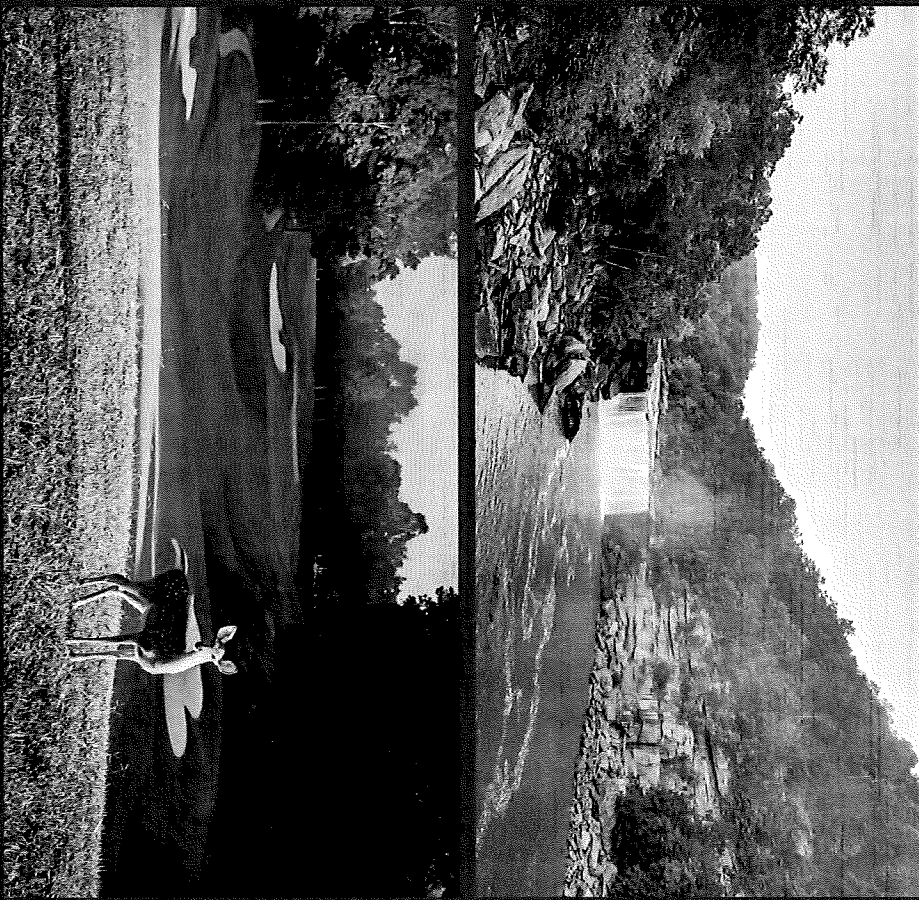
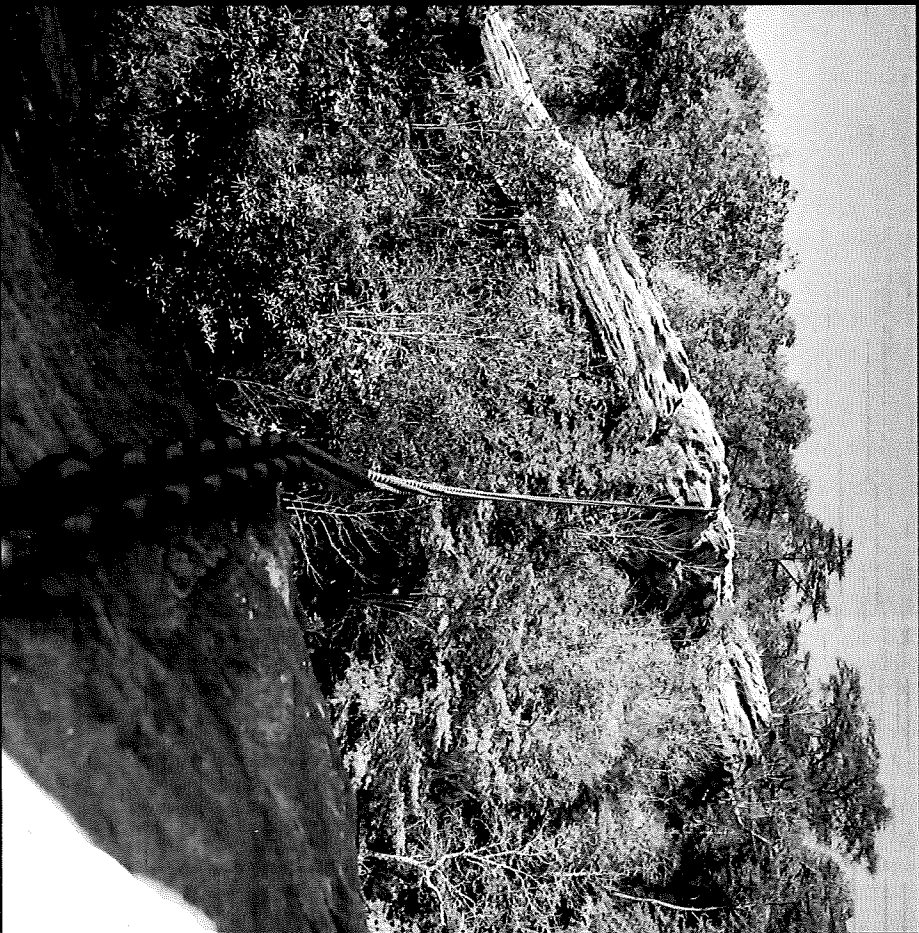
KENTUCKY HUMANITIES COUNCIL

- Kentucky Humanities, with the assistance of the National Endowment for the Humanities and private contributions, has supported public programs in the humanities throughout the commonwealth.
- Kentucky Humanities requested funds from the National Endowment for the Humanities funds for grants up to \$20,000 for rural museums to assess and restore the damages to their collections as a result of the flooding in July 2022.
- The Kentucky Humanities Council is celebrating its 50th anniversary this year. Founded in 1972, Kentucky Humanities supports the humanities in all 120 Kentucky counties, delivering more than 15,000 programs and reaching more than 5 million people.

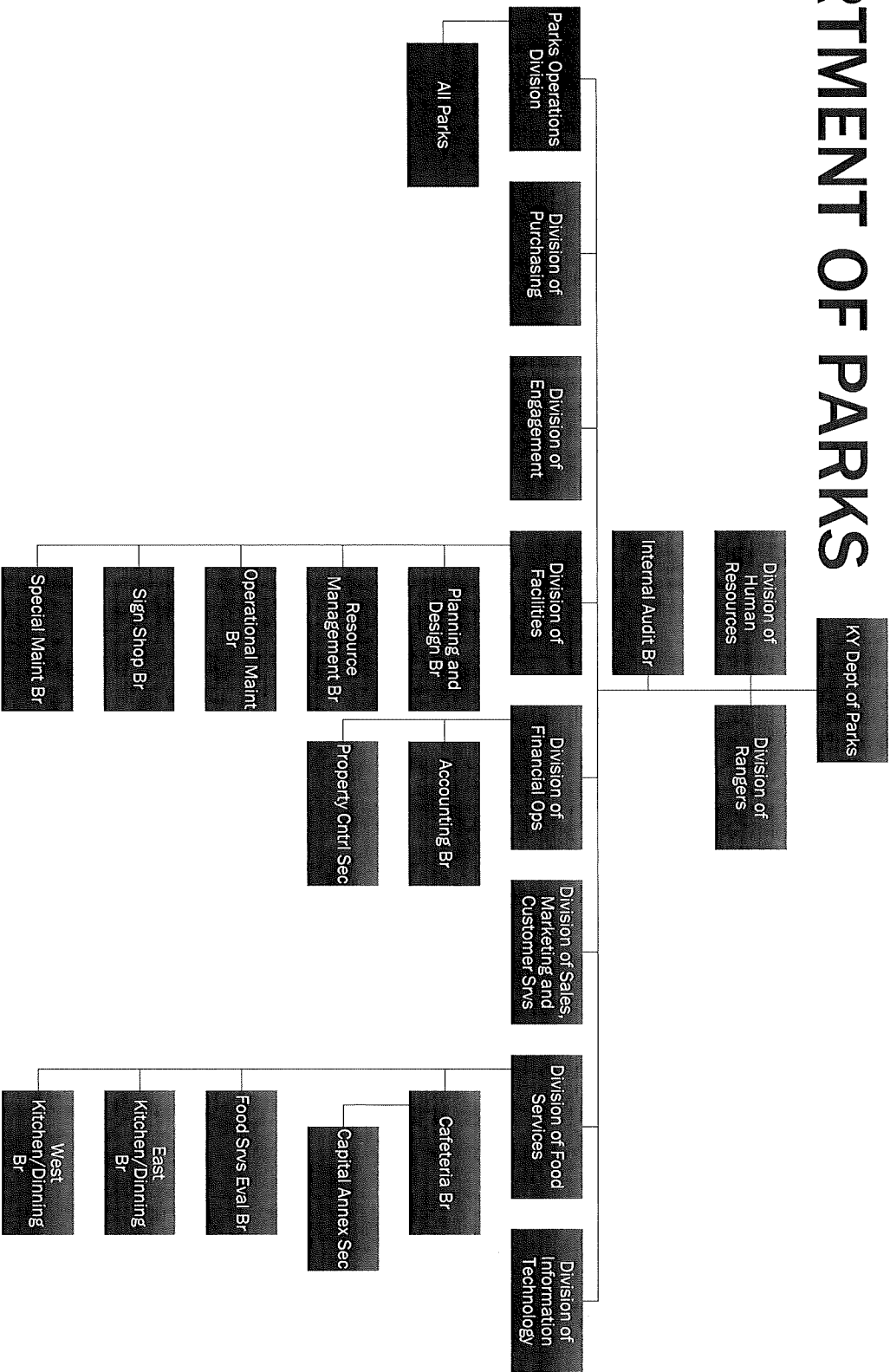


KENTUCKY
HUMANITIES

KENTUCKY STATE PARKS



DEPARTMENT OF PARKS



7/14/2022



General - \$58,142,400

Restricted - \$52,503,000

The Department of Parks utilizes general and restricted funds for personnel and operations.

The Department of Parks may be eligible for federal funds through FEMA and other grants that are used exclusively for emergency response efforts.

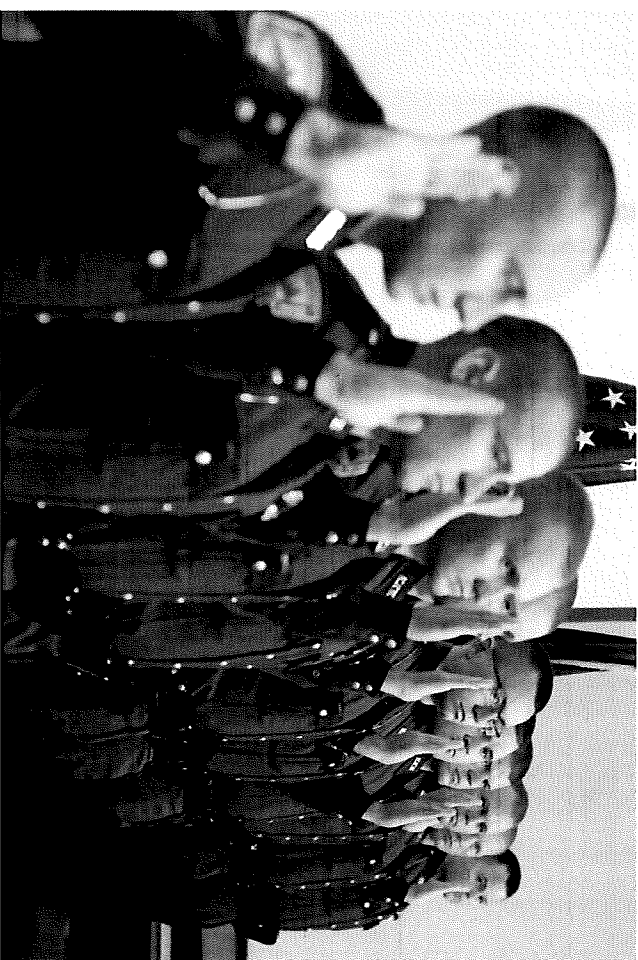
KENTUCKY DEPARTMENT OF FISH AND WILDLIFE RESOURCES

General - \$3,875,000

Restricted - \$64,629,700

Federal - \$23,183,100 (Wildlife and Sport Fish

Restoration program grants)

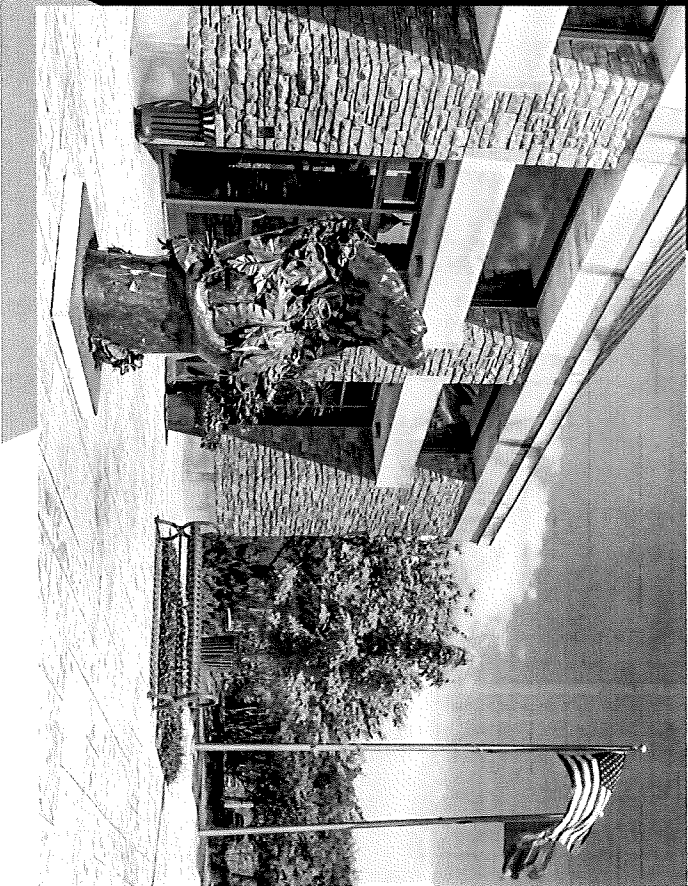


KENTUCKY ARTISAN CENTER

FY2022 - FY2023

General - \$1,145,800

Restricted - \$1,620,100

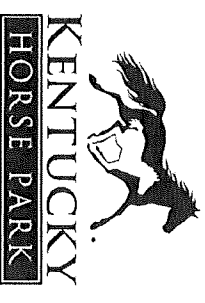
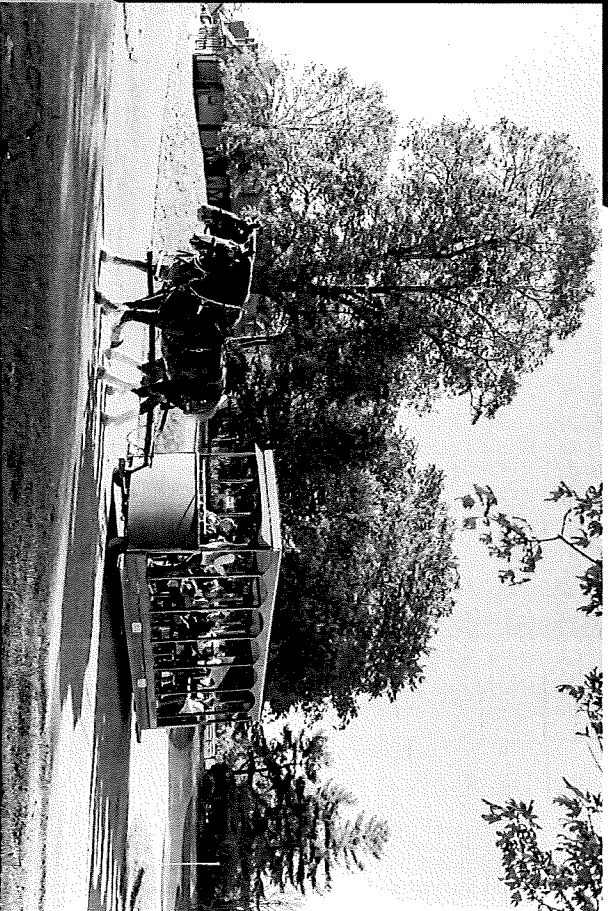


KENTUCKY HORSE PARK

FY2022 - FY2023

General - \$2,199,100

Restricted - \$11,718,200



KENTUCKY VENUES

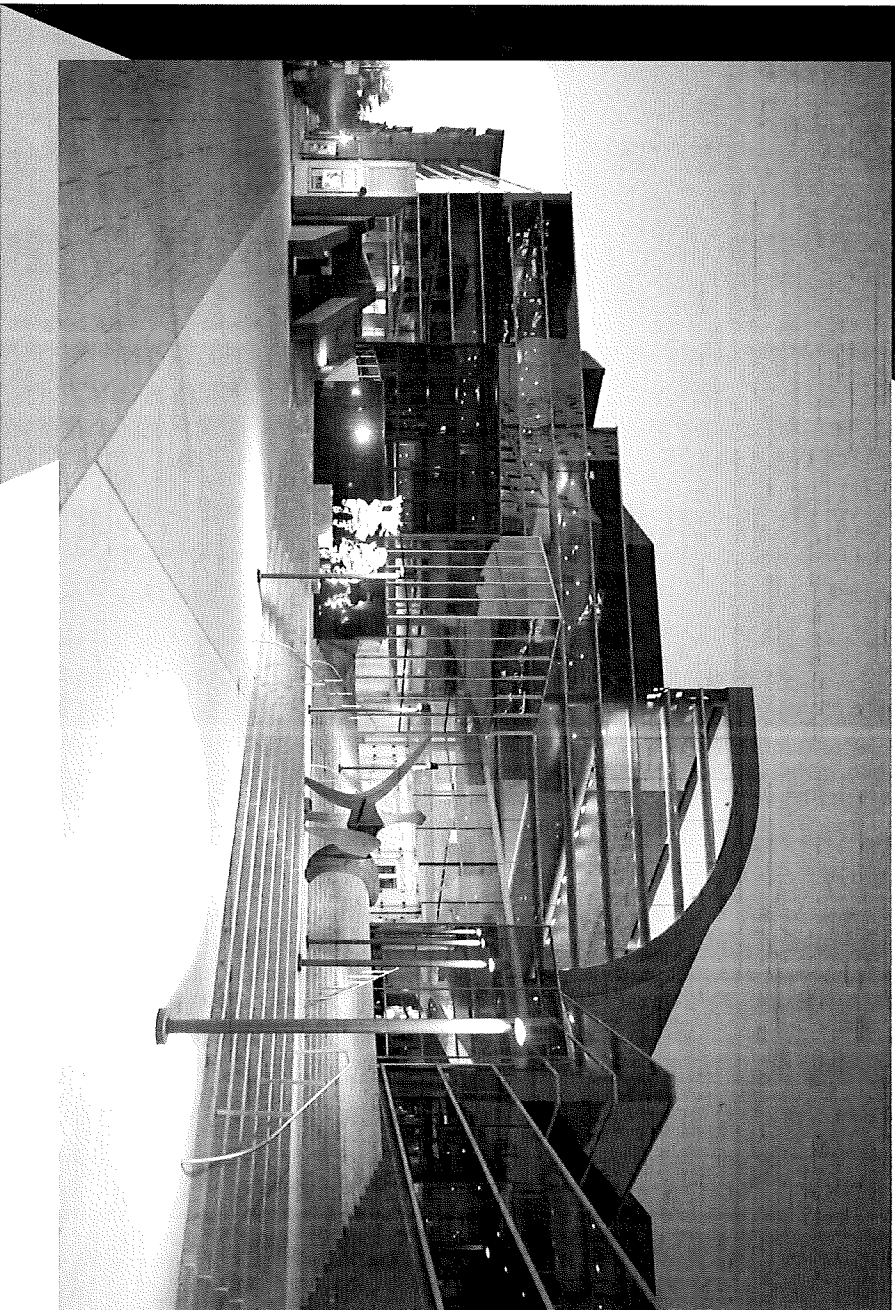
FY2022 – FY2023

General Fund – \$5,446,000

Restricted – \$52,397,000



KENTUCKY PERFORMING ARTS



2021/2022 Season

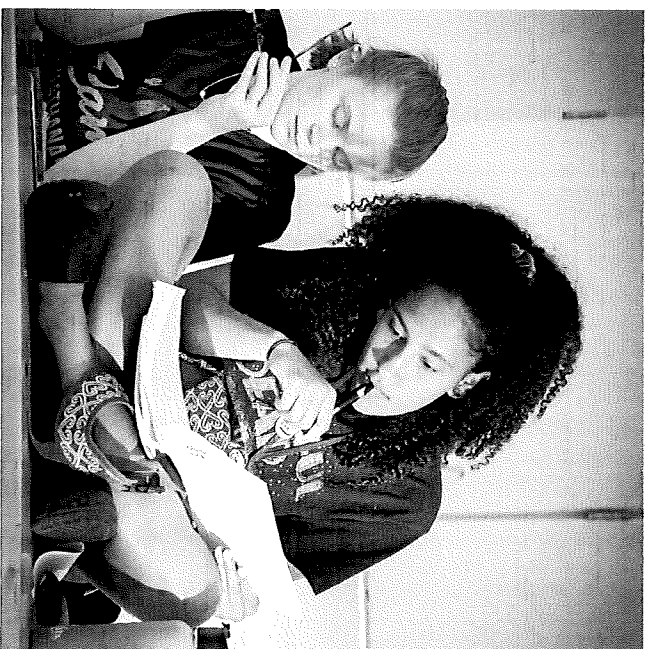
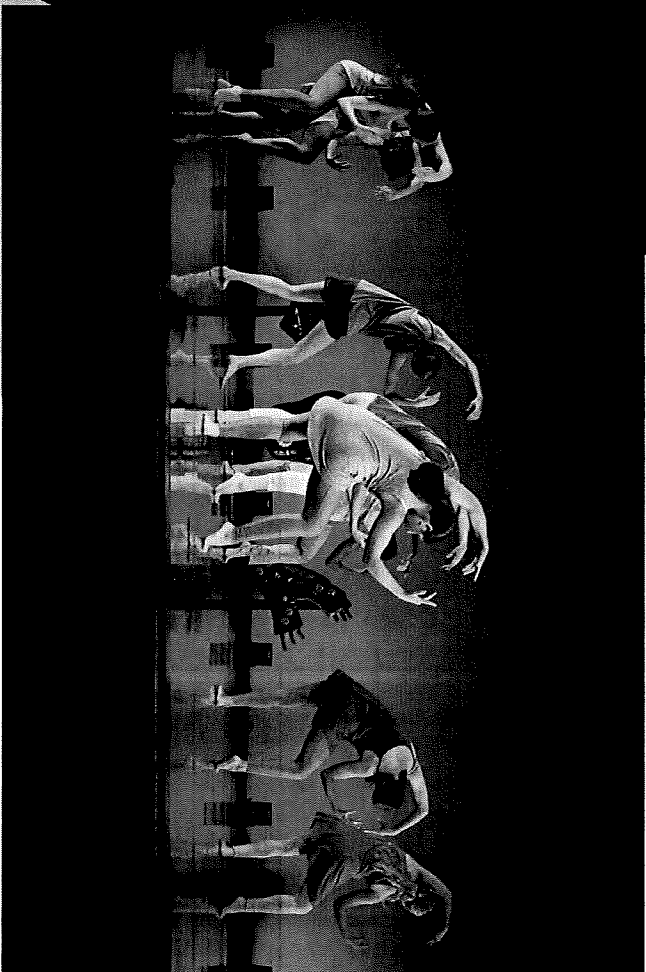
Generated Revenue: \$25,213,880

- **Attendance**
July 2021-June 2022 -
248,936
- **Number of Events**
July 2021-June 2022 - 375
- KPA venues attracted patrons from all 50 states and three countries (England, Mexico, Canada)

GOVERNOR'S SCHOOL FOR THE ARTS

FY2022 - FY2023

General Fund - \$558,300



CAPITAL PROJECTS BUDGET

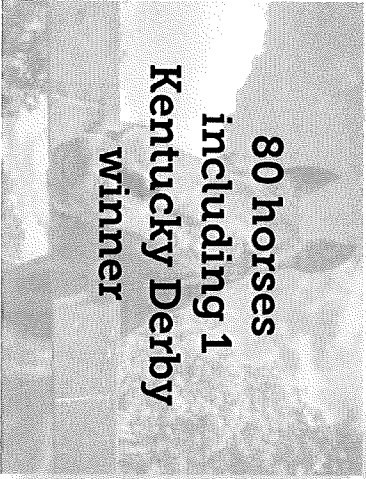
| Agency | 2022-23 | 2023-24 |
|--|------------|-------------|
| Department of Fish and Wildlife Resources | | |
| Fees-in-Lieu-of Stream Mitigation Projects Pool (restricted fund) | 64,500,000 | 48,600,000 |
| Camp Earl Wallace Dining Hall Construction (restricted and federal fund) | 300,000 | 3,200,000 |
| Department of Parks | | |
| Maintenance Pool (general fund) | 10,000,000 | 10,000,000 |
| State Parks Improvement (bond fund) | 0 | 150,000,000 |
| Kentucky Artisan Center | | |
| Maintenance Pool (general fund) | 1,000,000 | |
| Kentucky Horse Park | | |
| Maintenance Pool (general fund) | 1,500,000 | 1,500,000 |
| Renovate International Museum of the Horse (bond fund) | 4,000,000 | 0 |
| Replace Roof: Museum, Gatehouse, VIC (general fund) | 2,000,000 | 0 |
| Covered Arena and Rolex Stadium (general fund) | 2,000,000 | 0 |
| Barn Repair and Upgrades (general fund) | 10,000,000 | 0 |
| Kentucky Performing Arts | | |
| Maintenance Pool (general fund) | 550,000 | 550,000 |
| Emergency Repairs, Maintenance and Operations (federal fund) | 5,000,000 | |
| Kentucky Venues (State Fair Board) | | |
| State Fair Board Property Improvements (bond fund) | 0 | 200,000,000 |



**45 Kentucky
State Parks**




**34 Pools/
Beaches**




**80 horses
including 1
Kentucky Derby
winner**



17 Lodges



15 Marinas



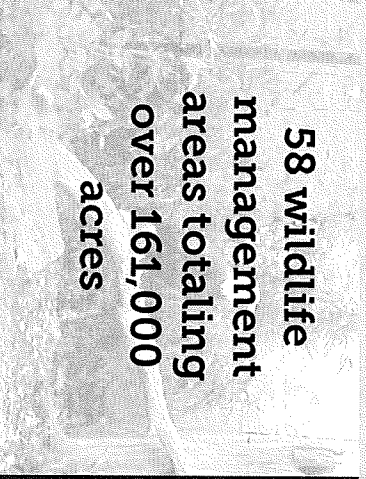
**Over 1.5 million
square feet of
event space**



14 Historic Sites



32 Campgrounds



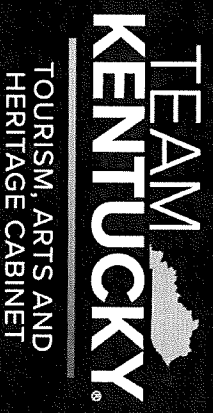
**58 wildlife
management
areas totaling
over 161,000
acres**



13 Golf Courses




**12 Equestrian
Competition
Rings**



**TEAM
KENTUCKY®**
TOURISM, ARTS AND
HERITAGE CABINET

QUESTIONS?

TEAM

KENTUCKY[®]

TOURISM, ARTS AND
HERITAGE CABINET