



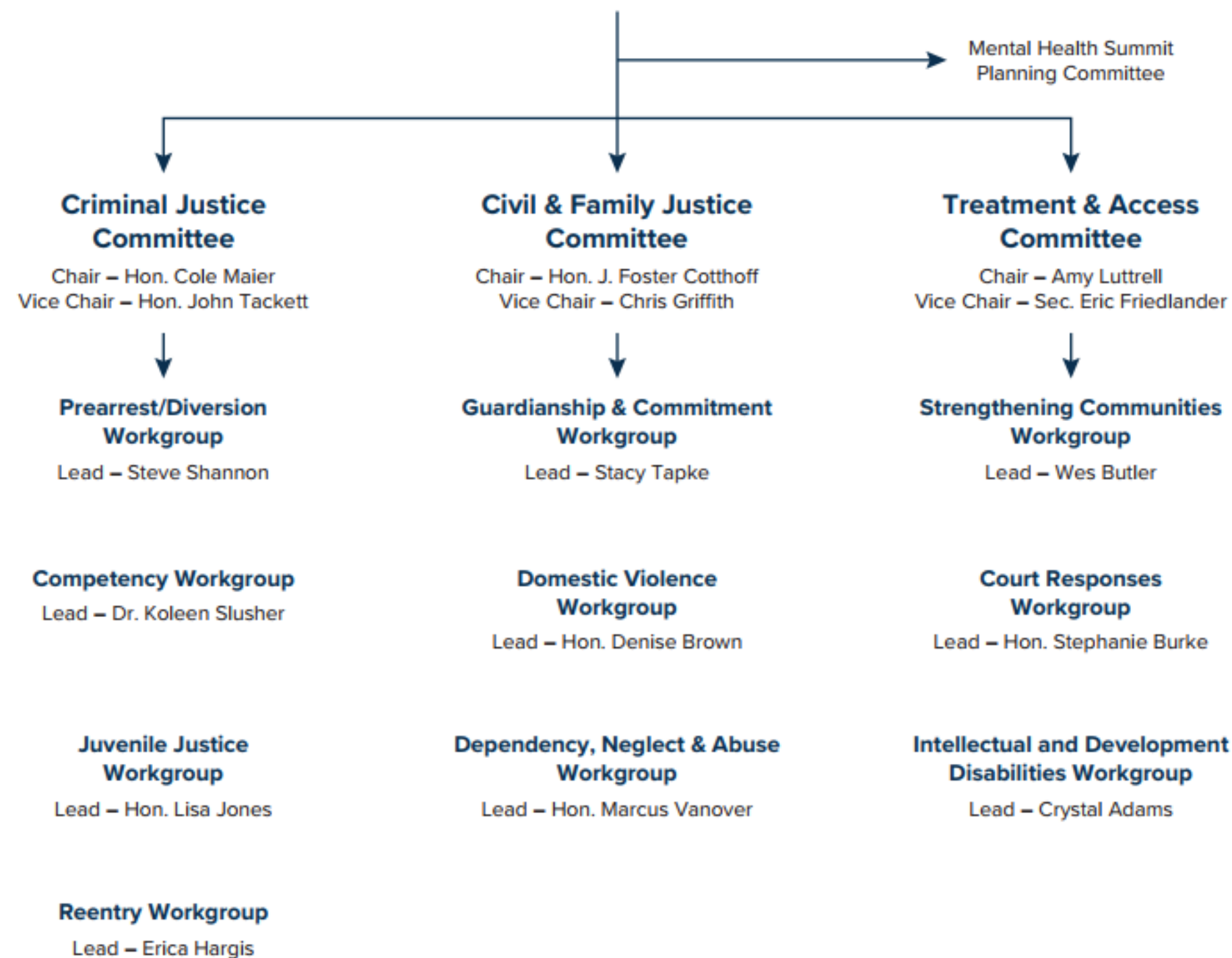
KENTUCKY JUDICIAL COMMISSION ON MENTAL HEALTH

Kentucky Court of Justice

KENTUCKY JUDICIAL COMMISSION ON MENTAL HEALTH



Executive Committee



KENTUCKY JUDICIAL COMMISSION ON MENTAL HEALTH



Cabinet for Health and Family Services v. K.S., 585 S.W.3d 202 (Ky. 2019)

T. C. v. Cabinet for Health and Family Services, No. 2022-CA-0219-ME, 2022 WL 12111373 (Ky. Ct. App. 2021)

KENTUCKY JUDICIAL COMMISSION ON MENTAL HEALTH



- National removal rates where parents have **psychiatric disability** → as high as **70 – 80%**
- National removal rates where parents have **intellectual disability** → as high as **40 – 80%**
- Nationally, **13%** of families with a parental **physical disability** reported discriminatory treatment in custody cases

KENTUCKY JUDICIAL COMMISSION ON MENTAL HEALTH



- **16%** of Kentuckians reported having a disability that limits activity
Workforce Innovation and Opportunity Act State Plan, Kentucky PYs 2020-2023 (2023)
- **34%** of the Kentucky adult population are living with a disability
Center for Diseases, Kentucky: Universal Design and Bingocize (July 2024)
- Data shows **rural areas** tend to have **higher disabilities rates** than urban areas in Kentucky
*Kentucky Career Center, Comprehensive Statewide Needs Assessment (2024);
University of Montana, Disability Rates: Kentucky (2024)*

KENTUCKY JUDICIAL COMMISSION ON MENTAL HEALTH



- As of February 2025, there were **8,262** Kentucky children in out of home care

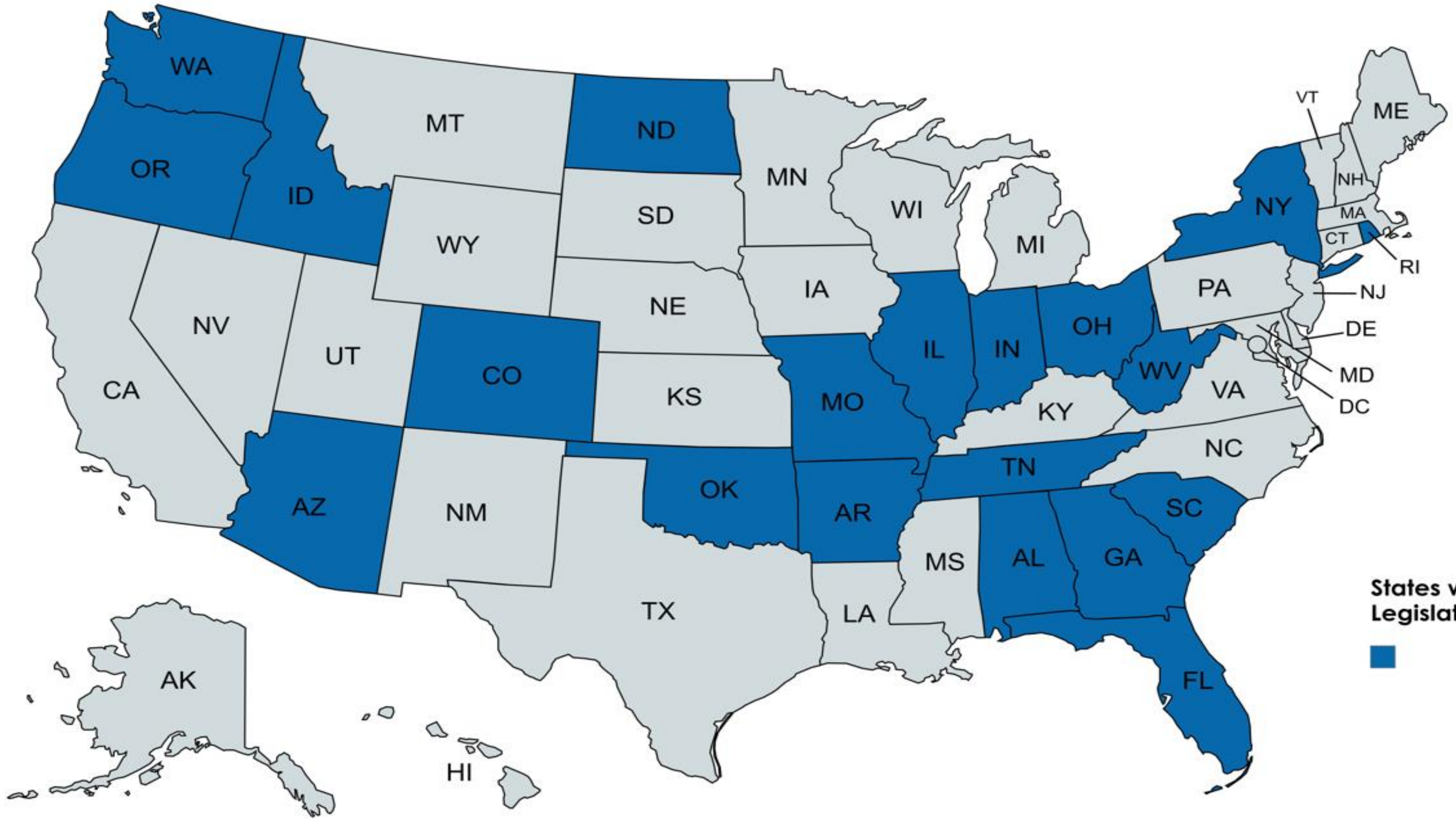
Kentucky Cabinet for Health and Family Services, Statewide Foster Care Facts (Feb. 2025)

- **17%** out of home care population is represented by children who are placed with relative and fictive kin givers

Kentucky Youth Advocates, Report on Relative and Fictive Kin Placements (Sept. 20th, 2023)

- Approximately **55,000** children are being raised by a relative or trusted friend, which is **twice** the rate of the national average

Kentucky Youth Advocates, Kinship Across Kentucky: Recommendations from Caregiver Voices (Sept. 24th, 2024)



States with Similar Legislation



KENTUCKY JUDICIAL COMMISSION ON MENTAL HEALTH



Key Provisions

- **Preserving Family Integrity**
- **Ensuring Supporting Services**
- **Enhancing Transparency and Accountability**
- **Aligning with Federal Standards**
- **Clarifying Legislative Language**



KENTUCKY JUDICIAL COMMISSION ON
MENTAL HEALTH



Questions?

For More Information

Email JCMH@kycourts.net

Webpage kycourts.gov/kjcmh