



KENTUCKY JUDICIAL COMMISSION ON MENTAL HEALTH

Kentucky Court of Justice

KENTUCKY JUDICIAL COMMISSION ON **MENTAL HEALTH**



Commission Overview

Established August of 2022, the commission's goals are to explore, recommend, and implement transformational changes to improve system wide responses to justice-involved individuals experiencing mental health, substance use, and/or intellectual disabilities.

KENTUCKY JUDICIAL COMMISSION ON MENTAL HEALTH



Recovery-Oriented System of Care (ROSC)

Recovery-Oriented Systems of Care:
Needs and Opportunities
for Kentucky's Court System



MARCH 2021
PREPARED BY THE CRIME AND JUSTICE INSTITUTE
CJI
CRIME AND JUSTICE INSTITUTE
A Division of Community Resources for Justice

Setting the Direction for Kentucky's Recovery-
Oriented System of Care

June 2022



- ROSC is a system-wide approach that improves outcomes for people involved with the court system.
- In 2021, assessed the court system's readiness to move toward a ROSC.
- In 2022, received recommendations to establish a high-level stakeholder group.

KENTUCKY JUDICIAL COMMISSION ON MENTAL HEALTH



Commission Framework

- Promote policy and partnership changes that institutionalize ROSC model components
- Build a system of care that offers a broad array of services and supports for justice-involved individuals
- Secure funding to support long-term implementation of the model
- Provide ROSC training and workforce development opportunities
- Ensure effective and ongoing communication that engages support toward this work

KENTUCKY JUDICIAL COMMISSION ON MENTAL HEALTH



Commission Membership

- 74 appointed members
- [Supreme Court Order 2022-53](#)
- Wide representation of state and community leaders

KENTUCKY JUDICIAL COMMISSION ON MENTAL HEALTH



Commission Structure

Criminal Justice

- Juvenile Justice Workgroup
- Competency Restoration Workgroup
- Prearrest/Diversion Workgroup

Civil and Family Justice

- Dependency, Neglect and Abuse Workgroup
- Guardianship and Commitment Workgroup
- Domestic Violence Workgroup

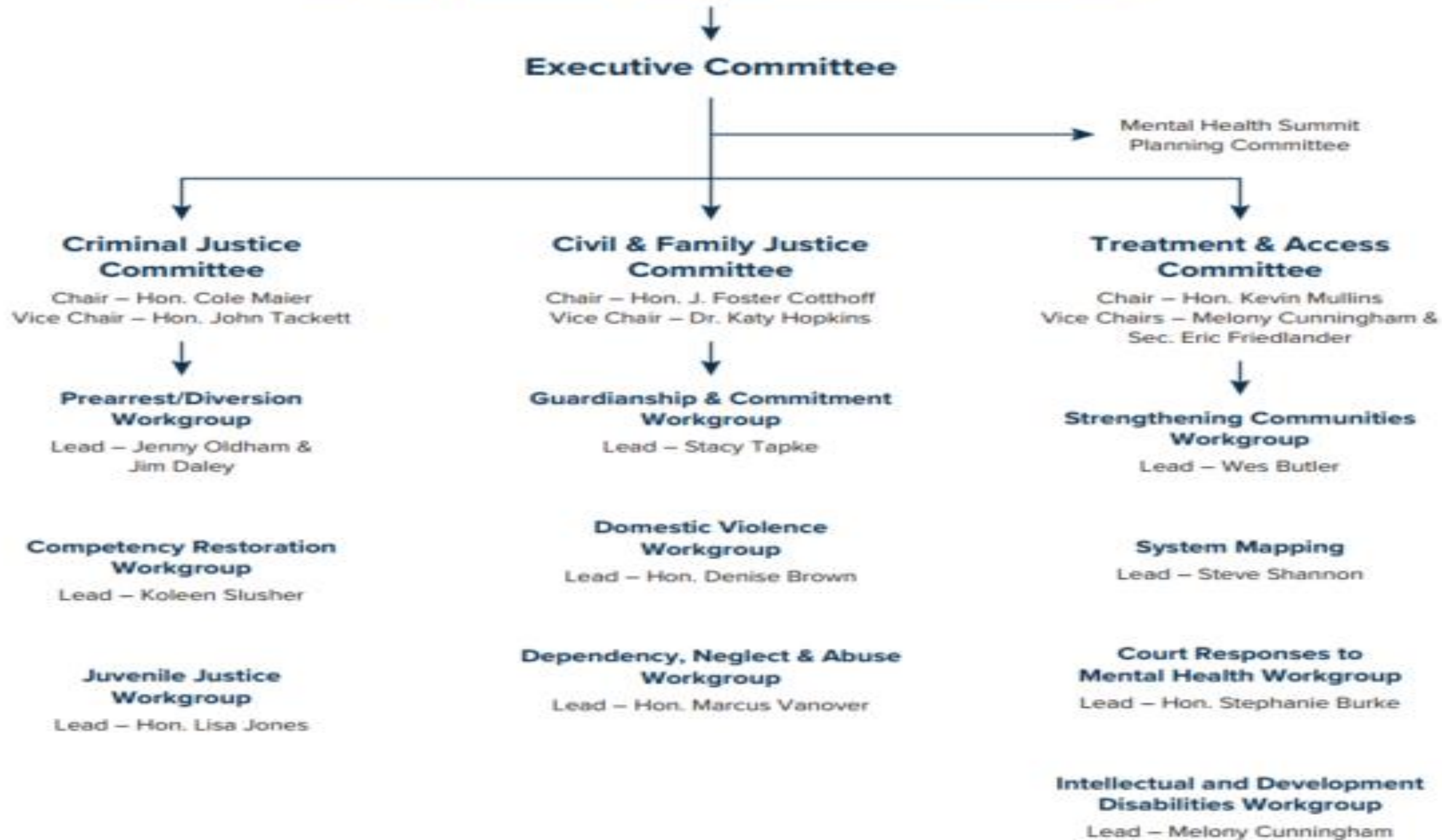
Treatment and Access

- Court Responses to Mental Health Workgroup
- System Mapping Workgroup
- Strengthening Community Response Workgroup
- Intellectual and Developmental Disabilities

KENTUCKY JUDICIAL COMMISSION ON MENTAL HEALTH



Kentucky Judicial Commission on Mental Health



KENTUCKY JUDICIAL COMMISSION ON MENTAL HEALTH



Short-Term Outcomes

- Meaningful collaboration between the judiciary and partners
- Increase educational and professional development
- More efficiently using existing resources
- Increased capacity for existing programs
- Early identification and increased diversion opportunities
 - National Technical Assistance
 - Sequential Intercept Mapping

KENTUCKY JUDICIAL COMMISSION ON MENTAL HEALTH



Long-Term Outcomes

- Increased early identification and capacity to serve justice-involved individuals
- Investment in meaningful diversion programming
- More accessible funding for communities to serve those in need
- Successful integration, dedicated courts, and increased service array

KENTUCKY JUDICIAL COMMISSION ON **MENTAL HEALTH**



1st Annual Mental Health Summit

May 31 - June 2, 2023,

The Galt House Hotel, Louisville, KY

The 2023 Summit will gather vested community partners, including Legislative and Executive Branch leaders, to collaborate in effort to more effectively respond to the needs of court-involved individuals with behavioral health concerns, including mental illness, substance use, and intellectual disabilities.

The Summit will provide an opportunity to discuss, develop, and implement a comprehensive continuum of behavioral health responses for Kentucky courts and their communities.

KENTUCKY JUDICIAL COMMISSION ON
MENTAL HEALTH



Contact Information

Email: JCMH@kycourts.net

Webpage: kycourts.gov/kjcmh