



KENTUCKY JUDICIAL COMMISSION ON MENTAL HEALTH

Kentucky Court of Justice

KENTUCKY JUDICIAL COMMISSION ON MENTAL HEALTH



Commission Overview

Established August of 2022, the commission's goals are to explore, recommend, and implement transformational changes to improve system wide responses to justice-involved individuals experiencing mental health, substance use, and/or intellectual disabilities.



KENTUCKY JUDICIAL COMMISSION ON MENTAL HEALTH



Sequential Intercept Model



INTERCEPT 4
Resources • prison to pipeline

- Halfway Housing ^{RKC+} (Re-entry Service) centers
- KYAE (13 of 14 DOC facilities)
- 26 local provider networks
- Re-entry coordinators
- Re-entry employment coordinators
- Social Service clinicians (addiction)
- KYRAS (Risk Assessment System)
- Sex offender treatment programs
- Technology (tablets)/Phone APP
- Existing relationships SPC (specialty courts)
- ID project
- Transportation pilot Who is missing? Jail services

INTERCEPT 4
Gaps and Opportunities

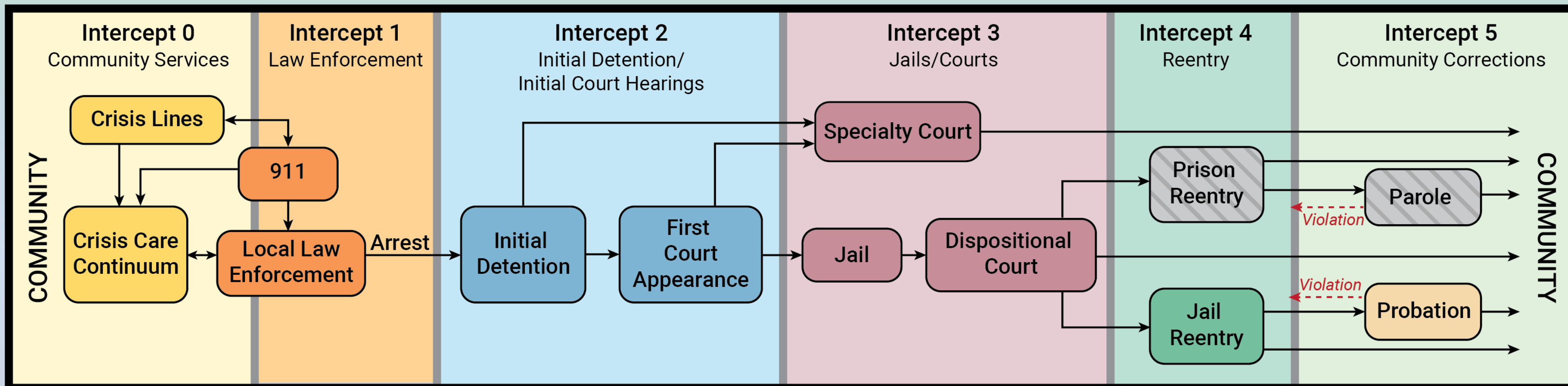
- Medication Facilitation
- Continuum of Care
- Educational Resource
- Expongement Clinics/community partners
- Technology
- Cross Agency connections + ideas - child welfare
- Those who served out, don't get case management
- Transition communication facility reputation
- Jail/Prison disconnection + consistency of services
- Cross system data sharing
- Non-felony assistance



KENTUCKY JUDICIAL COMMISSION ON MENTAL HEALTH



Sequential Intercept Model



KENTUCKY JUDICIAL COMMISSION ON MENTAL HEALTH



SIM Findings (Intercept 0)

988 does not connect to services, triggers law enforcement pickup

Abstinence-Only programs

CMHC inconsistency in delivery of services

Crisis stabilization and standards

Deflection teams/Alternative Response Model

Discharges to homelessness

Housing (lack of supportive and affordable housing)

IDD crisis services

Insufficient preventative services for adults (stigma)

Intensive discharge planning

No parity in mental health coverage

Paternalistic approach in the system

Penalties for noncompliance

Sharing of information with media/news

Transportation

Wayfinding (navigating the system)

KENTUCKY JUDICIAL COMMISSION ON MENTAL HEALTH



SIM Findings (Intercept 1)

Best practices responding when child is on the scene	Hospital distance
Data sharing	Knowledge of mental health training
De-Escalation training	Mental health first aid
Dispatcher training	NAMI partnership
Divert to crisis stabilization	Secondary trauma
Education of involuntary procedures	Self-care
Equity and Inclusion	Youth crisis

KENTUCKY JUDICIAL COMMISSION ON MENTAL HEALTH



SIM Findings (Intercept 2)

Communication between pretrial and defense	Lack of uniformity among jails
Correction officer training on interacting mental health justice-involved persons	Mental health diversion program (evidence based vs. compliance)
De-stigma training and flag system for front-line staff	Mental health network
Disclosure of privileged information	Pretrial monitoring
Expansion of SB90	PSAP limitations
Expansion of text notification	Services vary by county
Front load housing	Voices of Hope (peer support)
Jail	

KENTUCKY JUDICIAL COMMISSION ON MENTAL HEALTH



SIM Findings (Intercept 3)

Access to veteran resources	Lobby legislature to update mental health laws (community partners)
CMHC evaluate and prescribe meds to those incarcerated	Medication Assisted Treatment/MOUD in jails
Data sharing	Resources different at jail and prison
Embedded social workers	Specialty courts
Encourage jails to have mental health component	Stigma
Expanded use of Tim's Law	Telehealth/video appointments for those incarcerated
Guided interviews	Training for court staff

KENTUCKY JUDICIAL COMMISSION ON MENTAL HEALTH



SIM Findings (Intercept 4)

Accountability of treatment (evidence-based)	Lack of funding
Continuum of care	Medication facilitation
Cross-agency connections and ideas (child welfare)	Memorandums of Understanding
Cross-system data sharing	Non-felony assistance
Educational resource	Quality of services (data supported)
Expungement clinics/community partners	Technology
Inflexible sentencing options	Those who served out don't get case management
Jail/prison disconnection & consistency of services	Transition communication
Lack of Bureau of Prison data	

KENTUCKY JUDICIAL COMMISSION ON MENTAL HEALTH



SIM Findings (Intercept 5)

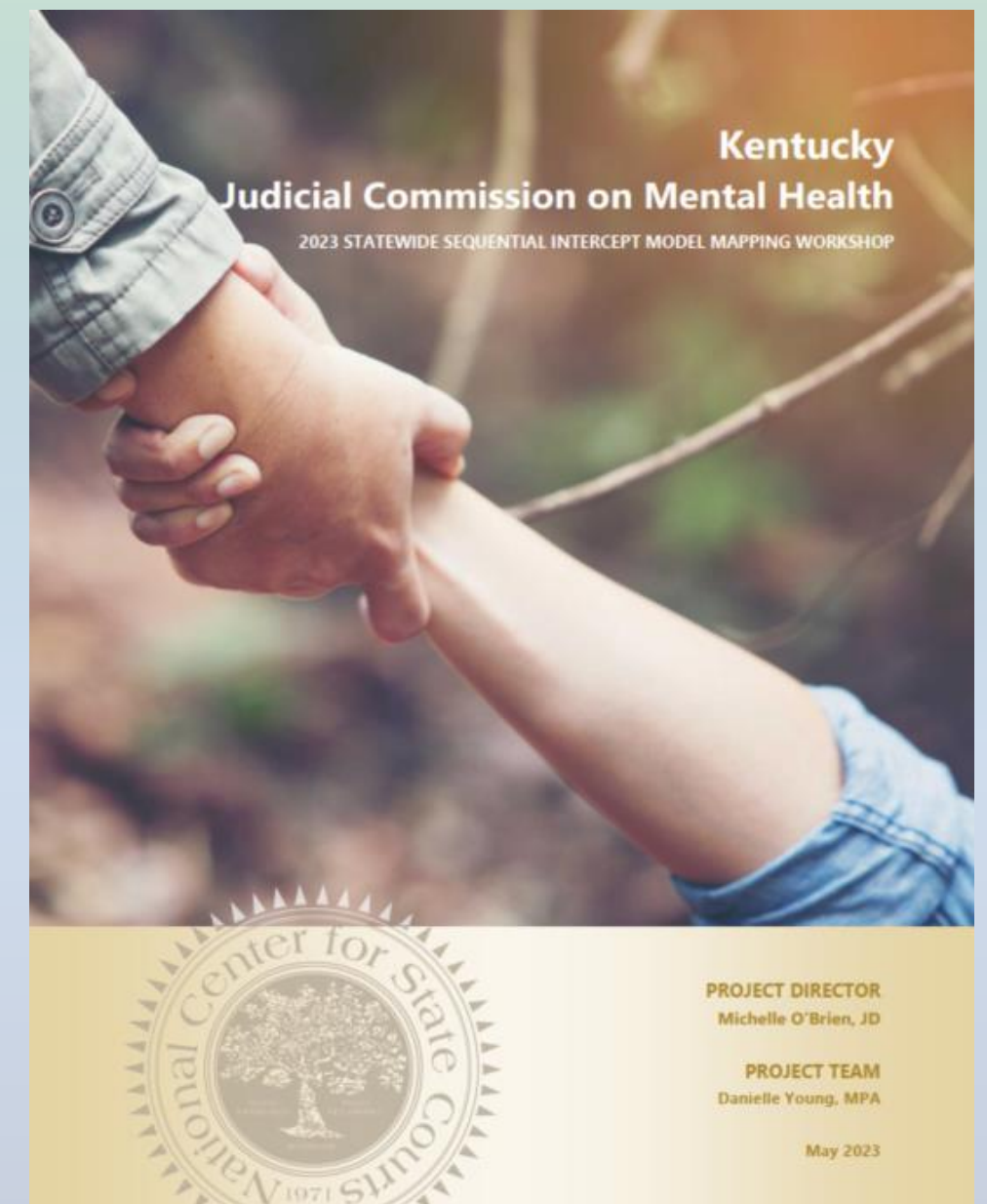
Community Mental Health Centers	Collaboration and communication between providers, courts and public agencies needs to be accurate, timely, and meaningful
Terminology/lexicon	Laws pertaining to information sharing
Unexamined policies	Expand appropriate system intervention
Cross-system understanding & transparency	Efficient sharing of resources between agencies and providers
Grand funding restrictions	Coordination and strategy on openings in services
Paperwork/box checking	Gender, sexuality, race, ethnicity, disabilities, foreign languages

KENTUCKY JUDICIAL COMMISSION ON MENTAL HEALTH



SIM Recommendations

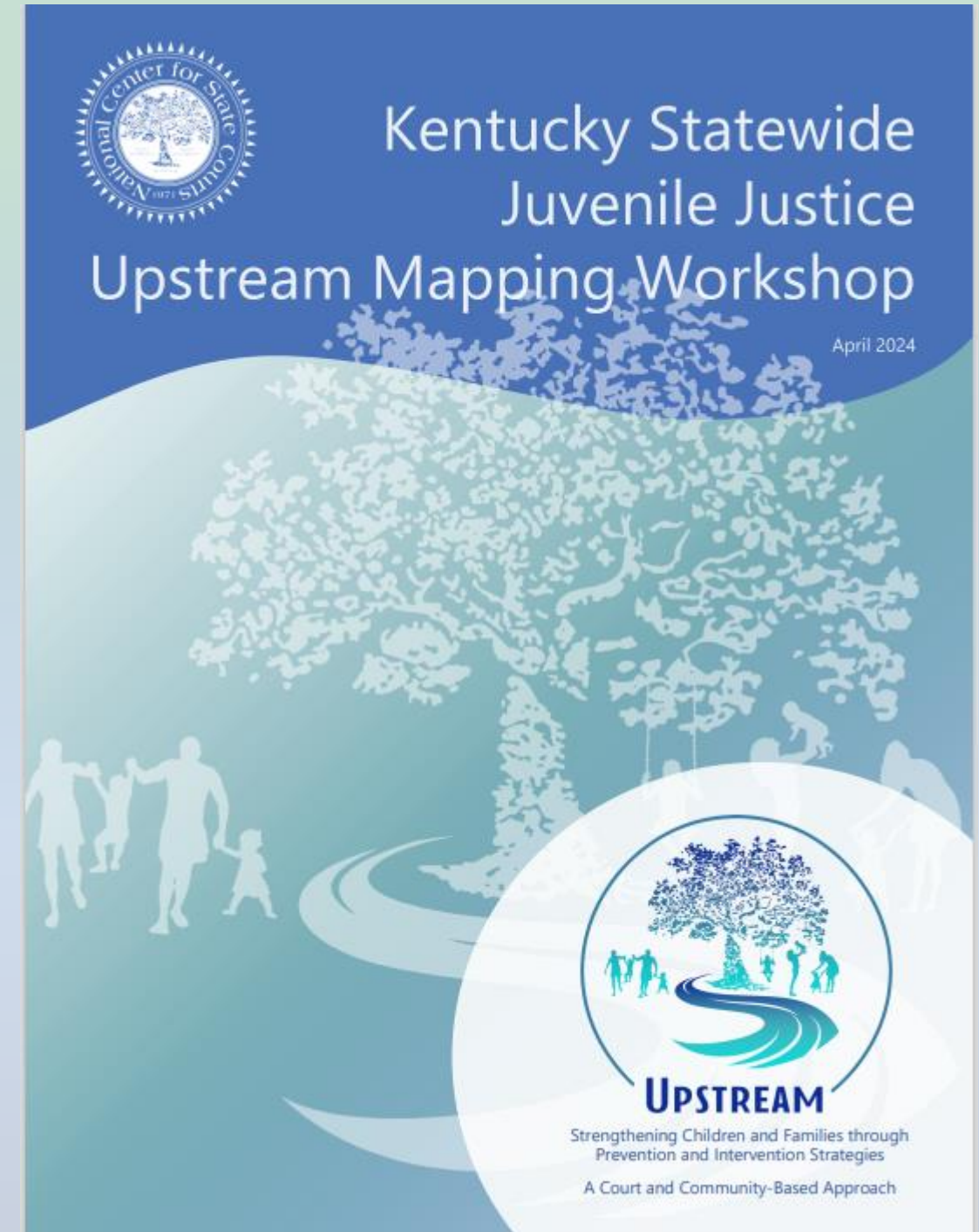
- Courts as Conveners and Leaders
- Education and Training
- Data-Driven Decisions
- Behavioral Health Continuum of Care
- Peers, Individuals with Lived Experience, and Families



KENTUCKY JUDICIAL COMMISSION ON MENTAL HEALTH



Additional System Mapping: Child Welfare and Juvenile Justice



KENTUCKY JUDICIAL COMMISSION ON MENTAL HEALTH



Community Mapping



**YOU ARE CORDIALLY INVITED TO
ATTEND A COMMUNITY MAPPING
EVENT FOR PULASKI AND ROCKCASTLE
COUNTIES.**

This event is being hosted by Circuit Court Judges Teresa Whitaker and Eddy Montgomery; Family Court Judges Marcus L. Vanover and Jane Adams Venters; and District Court Judges Benjamin R. Hardy and Kathryn G. Slone, in collaboration with the Kentucky Judicial Commission on Mental Health.

Community mapping is designed to advance local solutions for justice-involved individuals experiencing mental illness and substance use. This mapping event will specifically focus on criminal, child welfare and juvenile justice systems. It strategically pulls together community partners to assess available resources, identify gaps in services and develop plans for community change.

June 17, 8:30 a.m.-4:30 p.m. EDT

June 18, 8:30 a.m.-4:30 p.m. EDT

June 19, 8:30 a.m.-2 p.m. EDT

Hal Rogers Regional Fire Training Center
180 Oak Leaf Lane
Somerset, KY 42503

Registration required: <https://forms.office.com/g/F16pvVsmdp>



KENTUCKY JUDICIAL COMMISSION ON
MENTAL HEALTH



For more information:

Email JCMH@kycourts.net

Webpage kycourts.gov/kjcmh