

LONG-TERM TREATMENT: A GOOD INVESTMENT FOR KENTUCKY

John Wilson
Matt Brown
Deron Bibb

KAIROS

KENTUCKY ASSOCIATION OF INDEPENDENT
RECOVERY ORGANIZATIONS



- **KAIROS advocates for evidence-based practices and policies**
- **4,200+ Kentucky clients per day**
- **2,100+ employees**
- **Treatment in 37 KY counties**

PRESERVE ACCESS + RAISE QUALITY + IMPROVE OUTCOMES + BE GOOD STEWARDS

Background: Treatment in Kentucky

2014

**Kentucky
Expands
Medicaid
Benefits
= ACCESS**

2013 - 2017

**Eastern
Kentucky
Sees
Dramatic
Decrease in
Overdose
Deaths**

2019

**Waiver 1115
Allows
Providers to
Have
Facilities
With More
Than 16 Beds**

2022 - 2023

**Studies Find
Kentucky
Leads Nation
in Access to
Treatment
Beds & Adult
Mental Health**

What Happened?

Timeline of Events

Rumors begin about potential MCO rate cuts

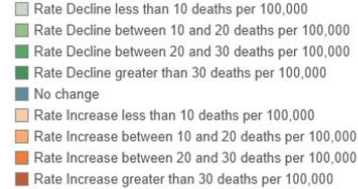
Expect more behavioral health providers to receive letters



First unilateral proposed contract amendments came in March 2024

Access to Treatment = Fewer Overdose Deaths

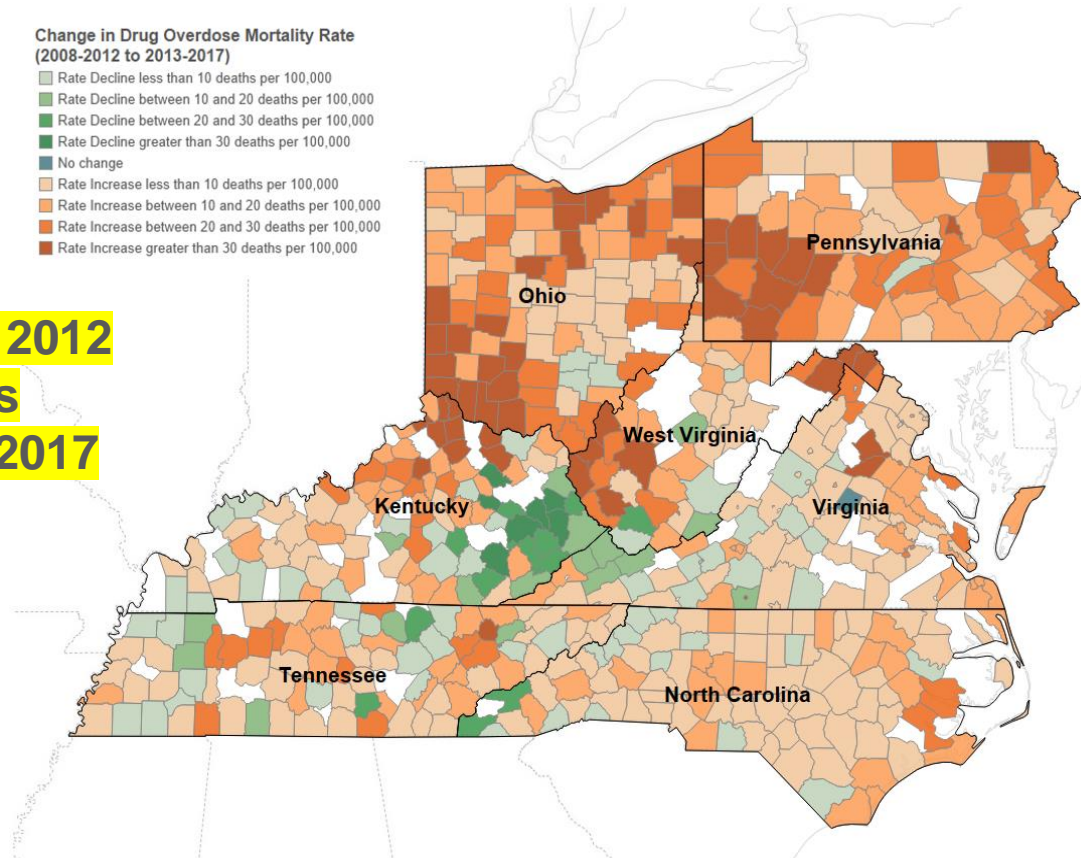
Change in Drug Overdose Mortality Rate
(2008-2012 to 2013-2017)



2008 - 2012

VS

2013 - 2017



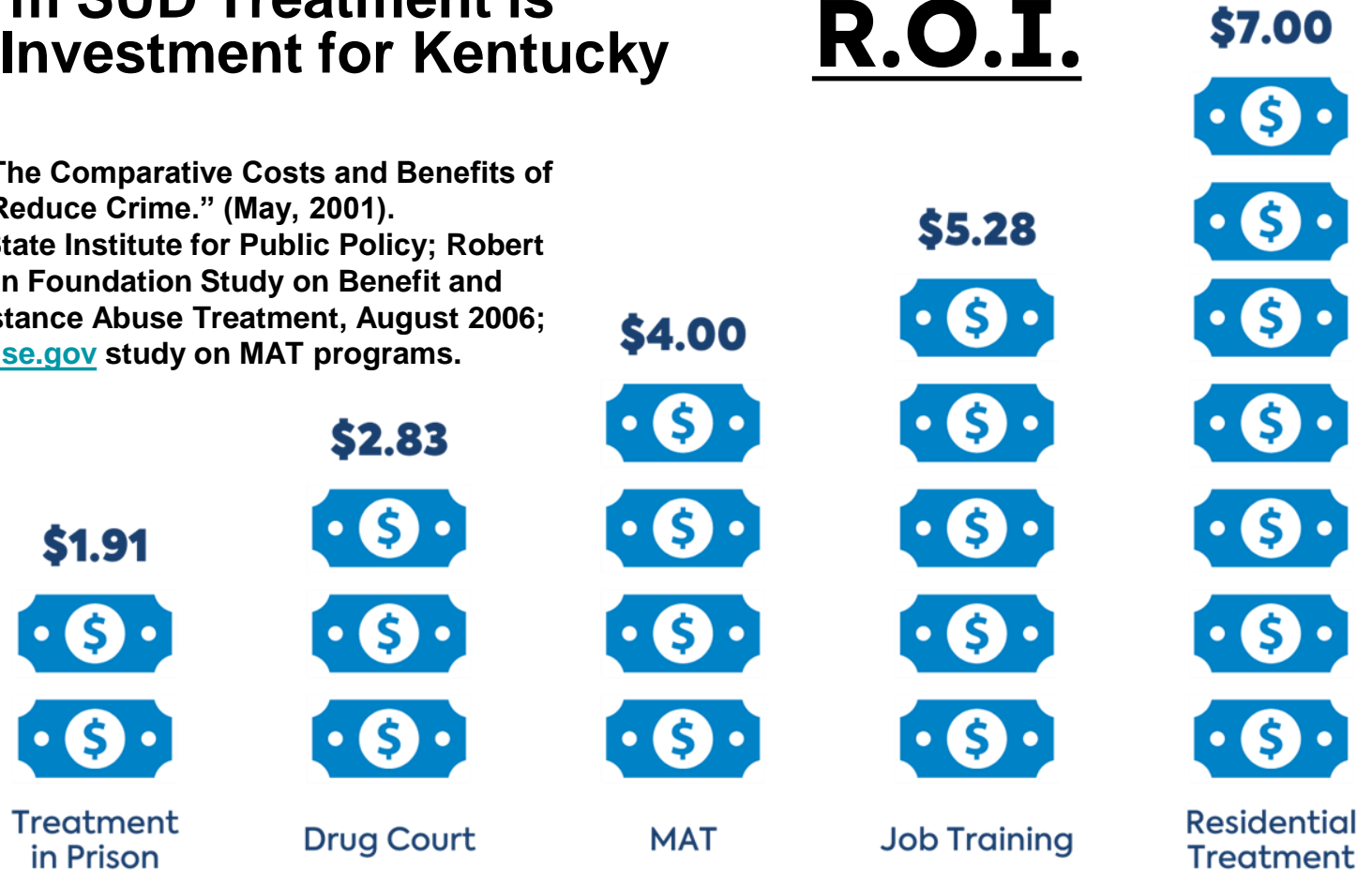
14 of the top 20 counties in the US with the largest reduction in drug overdose deaths were in Eastern Kentucky.

Source: NORC

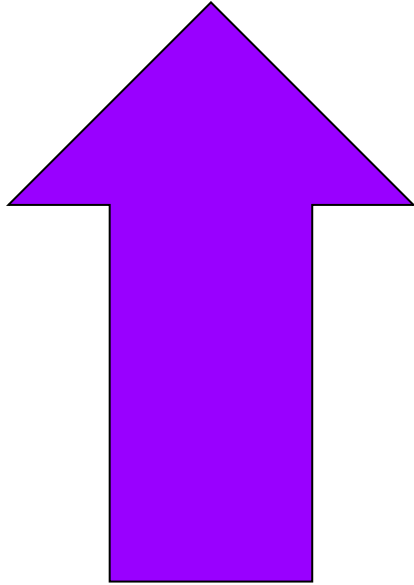
Long-term SUD Treatment is A Good Investment for Kentucky

R.O.I.

Aos, Steve. "The Comparative Costs and Benefits of Programs to Reduce Crime." (May, 2001). Washington State Institute for Public Policy; Robert Wood Johnson Foundation Study on Benefit and Costs of Substance Abuse Treatment, August 2006; www.drugabuse.gov study on MAT programs.

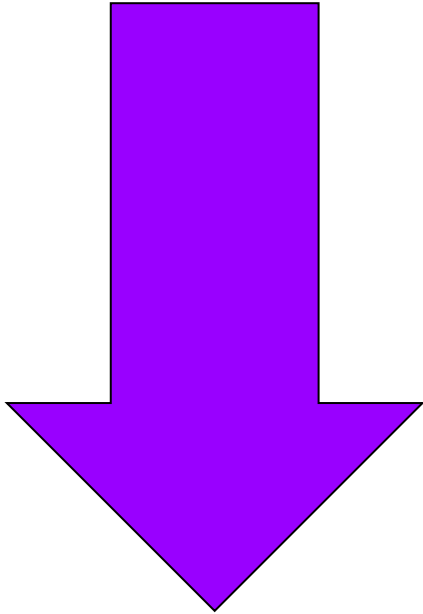


How Will MCO Rate Cuts Impact the Recovery Ecosystem and the People We Serve?



- **Costs will shift to emergency departments, justice system, foster care, etc**
- **Higher overdose rates**
- **Higher recidivism rates and ER visits**
- **Higher crime and incarceration rates**

How Will MCO Rate Cuts Impact the Recovery Ecosystem and the People We Serve?

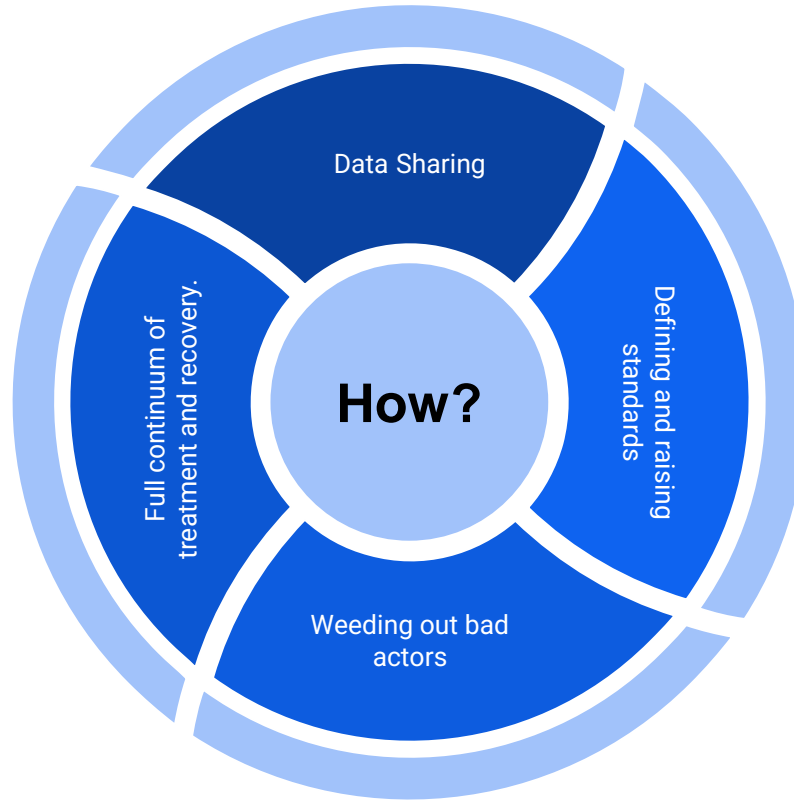


- **Fewer Kentuckians in the workforce**
- **Reduced access to treatment**

A Collaborative Approach to Treatment & Recovery

- **MCOs and treatment providers both have an important role to play in improving outcomes for people with SUD.**
- **Over the last several years, KY has been able to expand access to treatment.**
- **We must find a collaborative and sustainable path forward that preserves access, raises quality standards, and ensures long-term outcomes.**

A Collaborative Approach to Treatment & Recovery

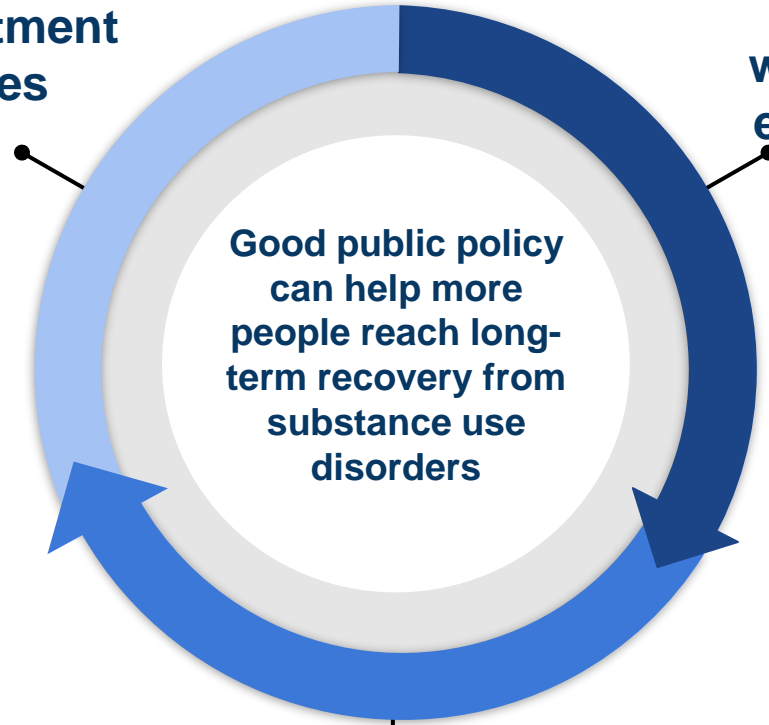


**Expanded access to
evidence-based treatment
& recovery services**

**More healthy people
who are able to secure
employment & reenter
the workforce**

**Good public policy
can help more
people reach long-
term recovery from
substance use
disorders**

**Higher workforce
participation, stronger
economy**



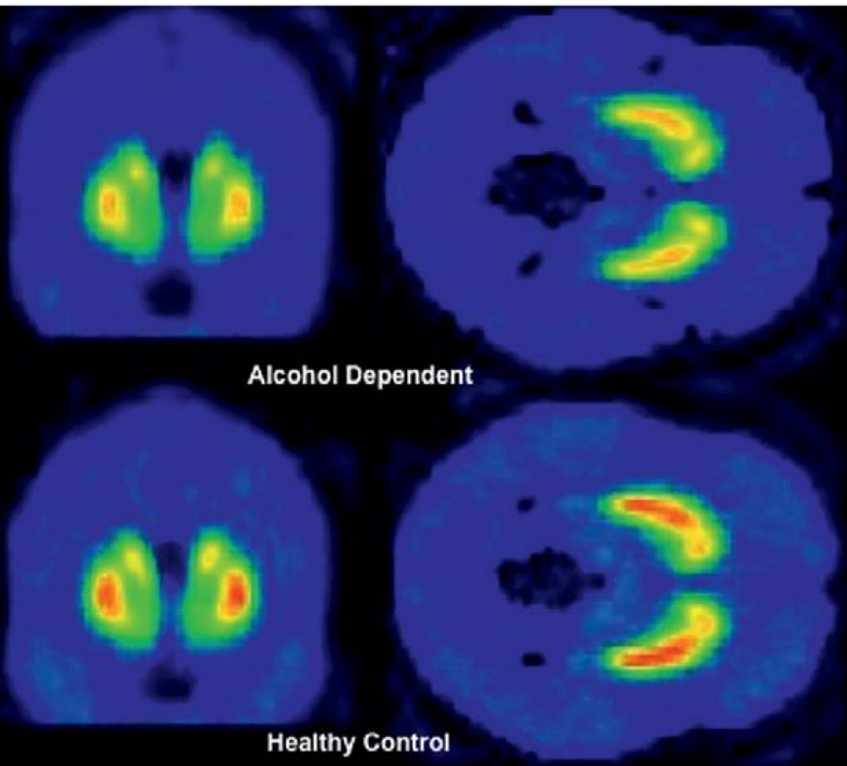


Photo from Handbook of Clinical Neurology, 2014

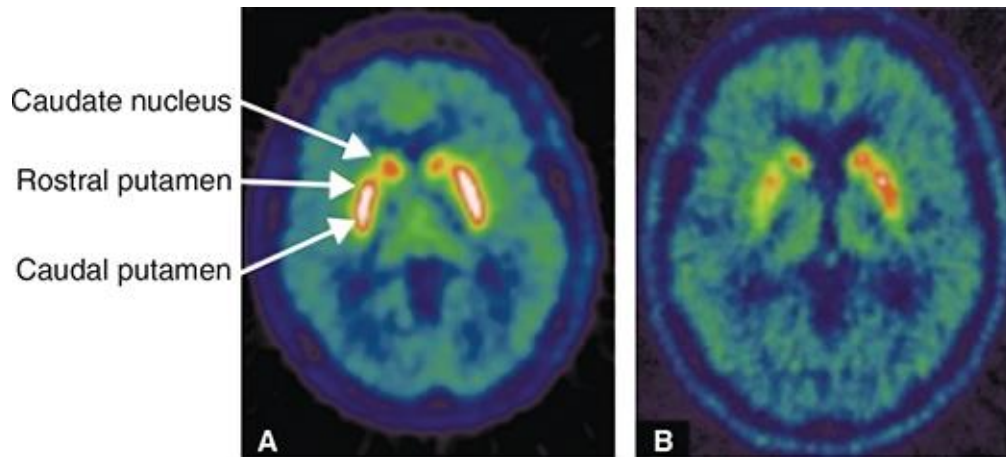
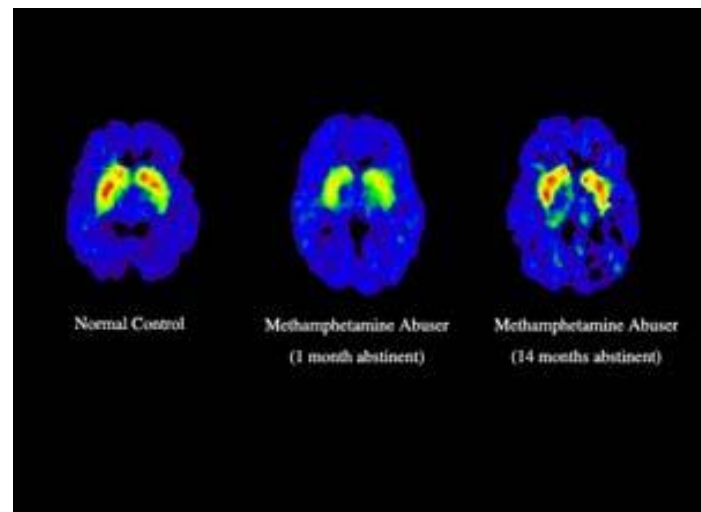


Photo from Molecular Imaging and Therapy, 2023

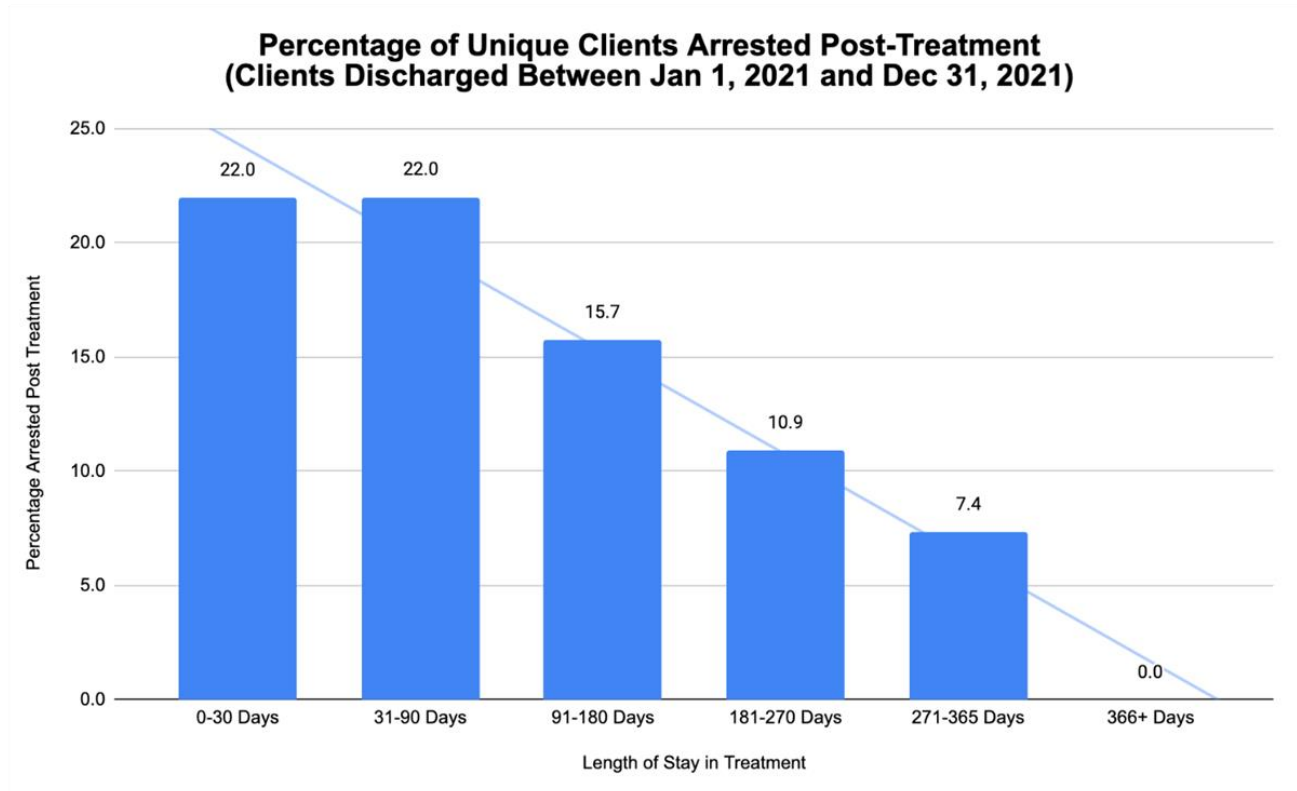


NIDA,
2001

Long-Term Treatment is Medically Necessary

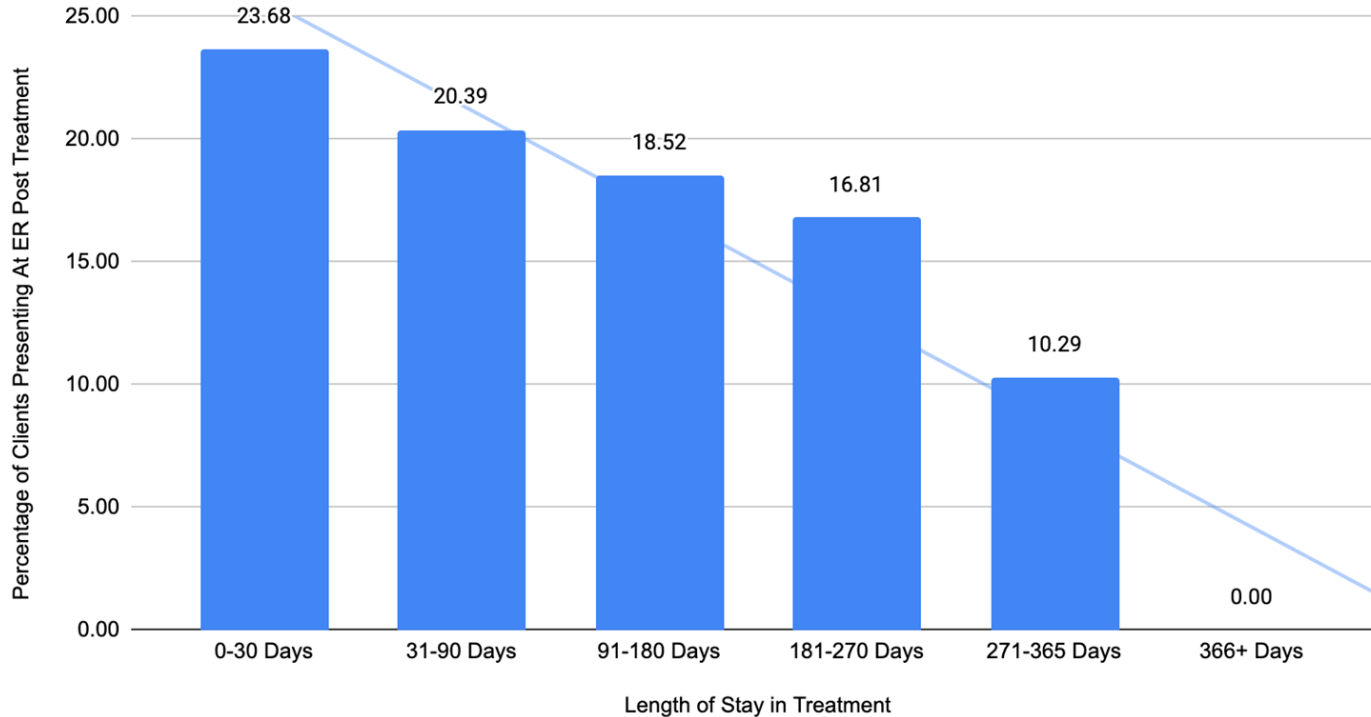
- **Co-occurring mental health diseases**
- **Treating substance use is compounded by existing mental health and physical health complications.**
- **Other medical needs - diabetes, vision, dental, heart disease, HEP C, HIV, etc**
- **Holistic approach to treat the whole person**
- **Breaks down social determinants**
- **Requires repetition and structure**

Long-term treatment = Reduced arrests

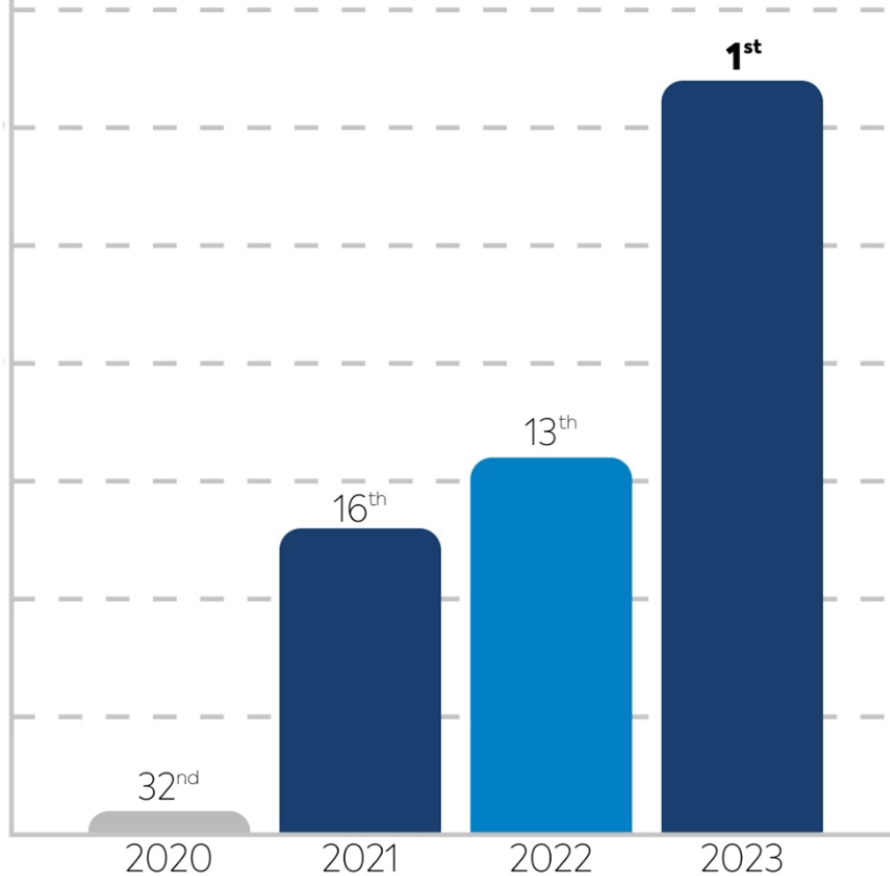


Long-term treatment = Reduced ER visits

**Percentage of Unique Clients Presenting At An ER Within 18 Months
(Clients Discharged Between Jan 1,2021 and Dec 31, 2021)**



*KY Ranking

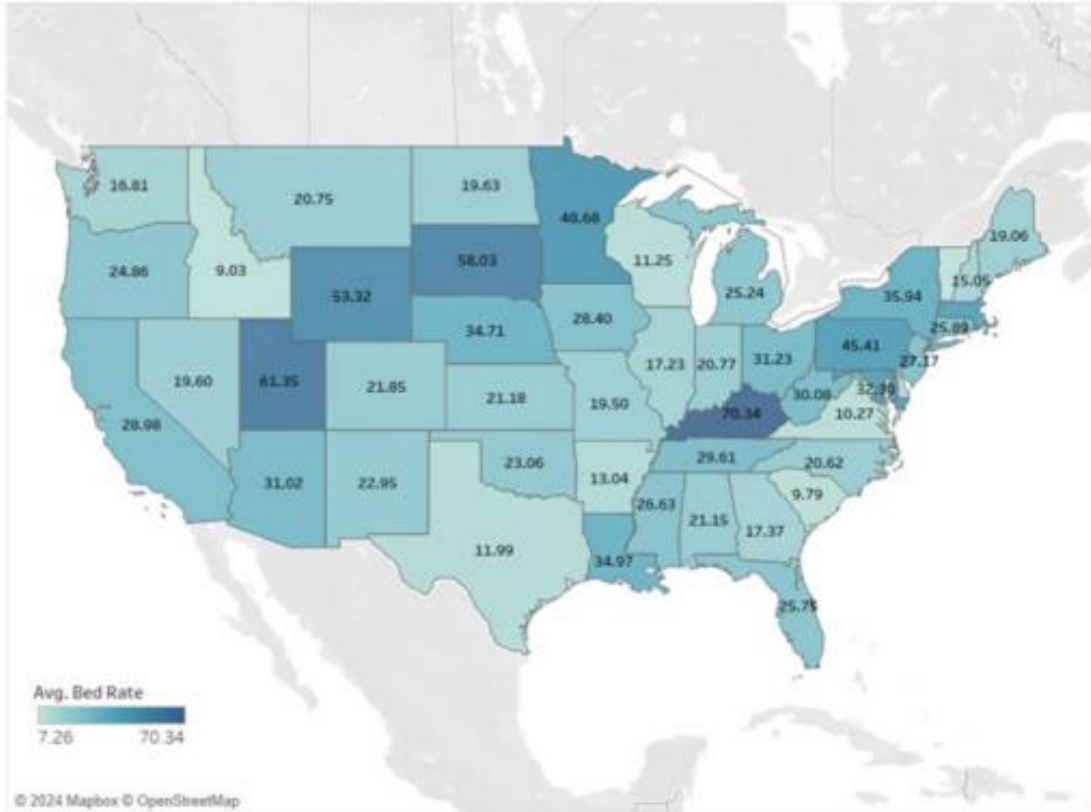


From 32nd to 1st!

**KY is leading the nation
in access to mental
health care at a time
when it's needed most**

Source: [Mental Health America](#)

2022 AVERAGE RESIDENTIAL BEDS AVAILABLE PER 100,000 POPULATION



Kentucky, with a residential designated bed rate of 70.34 beds per 100,000 population, had the highest rate in the country in 2022.

Source: [ETSU](#)

Long-term treatment is working in Kentucky

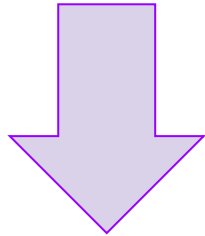
Collaboration // Access // Harm Reduction // Long-term Recovery // Education // Workforce

KY was 1 of only 8 states in 2022 with a reduction in overdose deaths.

Long-term treatment is working in Kentucky

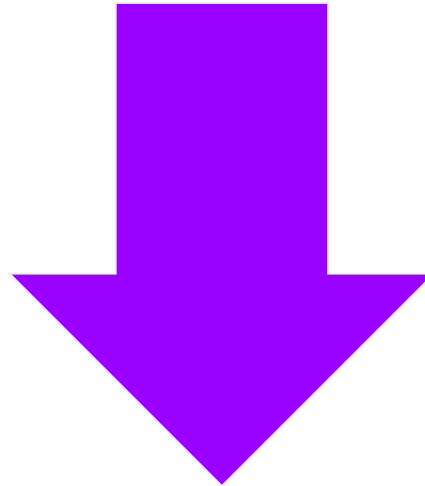
Collaboration // Access // Harm Reduction // Long-term Recovery // Education // Workforce

Kentucky surpassing nation in reduction to overdoses



3%

National
Reduction



9.8%

Kentucky's
Reduction

Source: [CDC](#)

Legislative Efforts to Improve Quality of Care

- **Bills went to effect July 1**
 - **House Bill 56, 462, 505**
 - **Senate Bill 71 / House Bill 408**
- **Time is needed to see their impact**

Next Steps

- Collaboration to find the best course of action for Kentucky, Providers, MCOs, and our patients
 - **Personalized treatment**
 - **Right Care**
 - **Right Place**
 - **Right Time**
 - **Full continuum**