



LifeWorks @WKU
Bridging gaps.
Building relationships.

Bowling Green ▪ Kentucky

www.lifeworksatwku.org





LifeWorks Transition Academy

Kentucky's Only Transition Academy for Autistic Young Adults



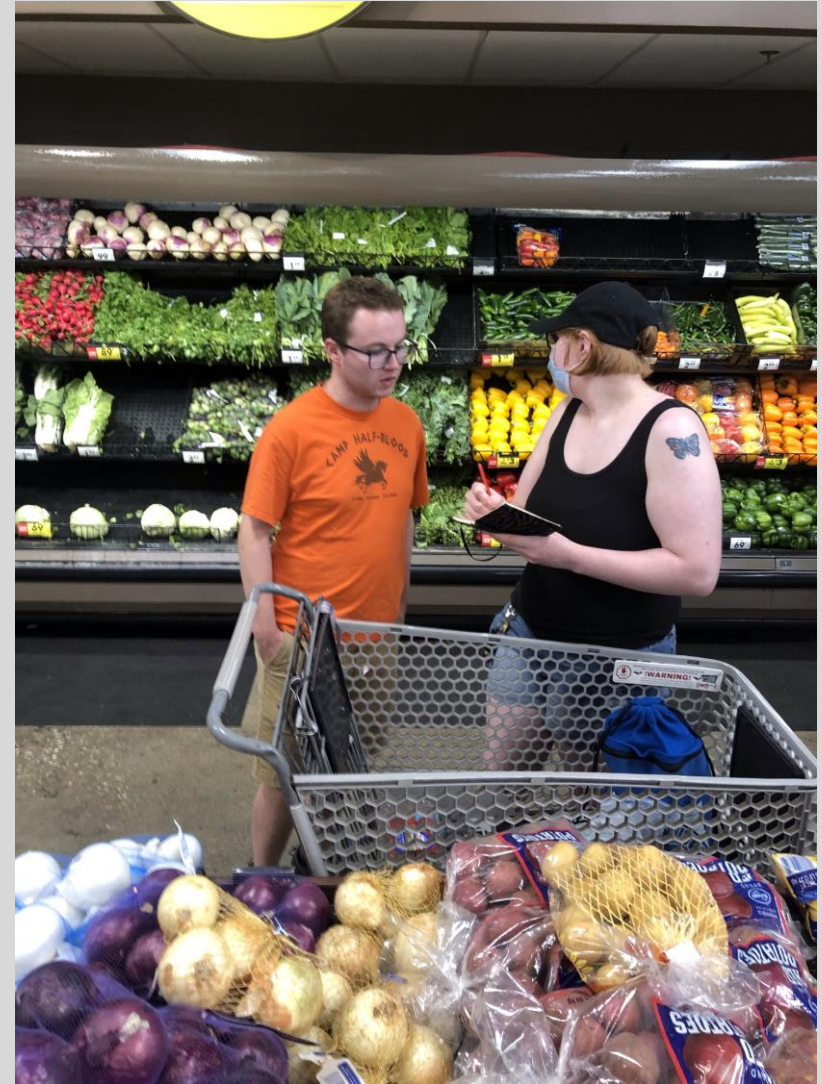
LifeWorks @ WKU

- An independent non-profit 501(c)3
- Funded solely by public-private support & tuition and fees
- Established the *LifeWorks Transition Academy* in 2020
- Employment rate of LifeWorks participants: 90%
(National employment rate for autistic adults: 15%)

Transition Academy Programs & Services

- Pre-vocational Services*
- Supported Employment*
- Independent Living Skills
- Community Engagement & Inclusion
- Building Personal & Professional Relationships

*LifeWorks is an authorized Community Rehabilitation Provider for the KY
Office of Vocational Rehabilitation



Kentucky's Only Living & Learning Transition Academy for Autistic Young Adults







LifeWorks

Bridging gaps. **@WKU**
Building relationships.

Programs & Services

Building & sustaining independent living and job-readiness skills for autistic young adults



Transition Academy



LifeWorks Bridge

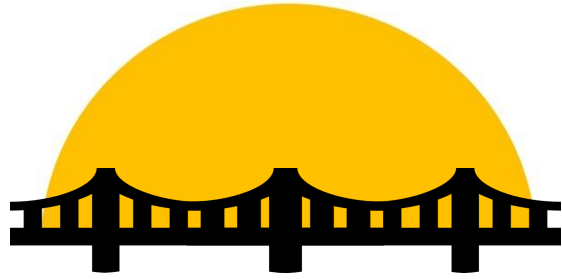


SKYCTC Bridge



After the Academy

Housing Network



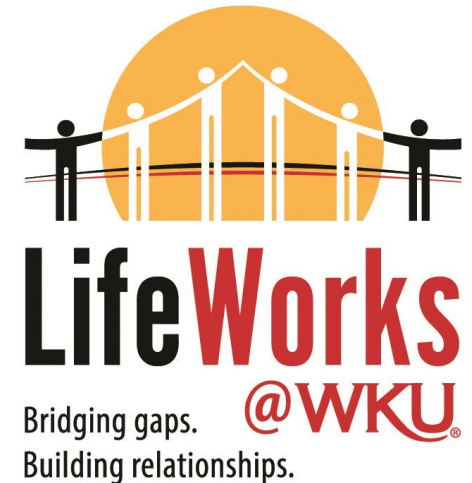
Bridge Program

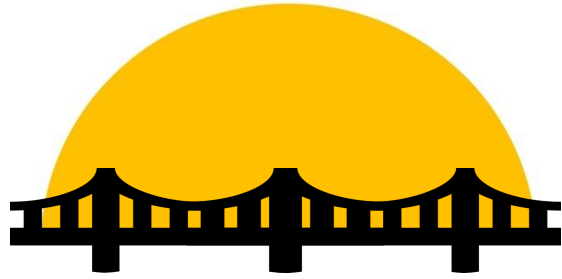
Non-Residential

Program Goals

Utilizing LifeWorks person-center curriculum, participants work toward achieving successful outcomes in the following areas:

- Employability
- Health & Wellness
- Life Skills
- Relationships
- Financial Management
- Adaptability
- Personal Safety
- Social Skills



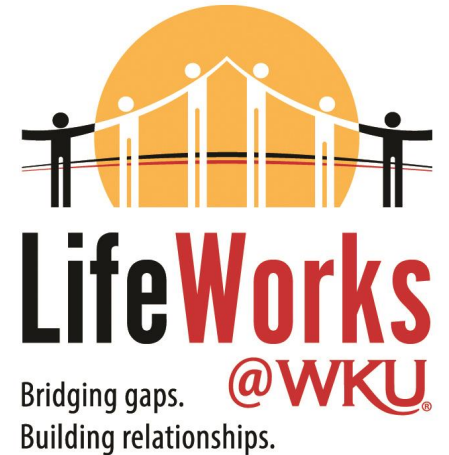


SKYCTC Bridge

Applying LifeWorks person-centered curriculum to mentoring & training autistic students enrolled at Southcentral Kentucky Community & Technical College (SKYCTC)

Program Services & Support:

- Independent Living Skills
- Housing Recommendations
- Pre-Vocational Services
- Mentoring
- Counseling
- Study Tables
- Social Activities
- Advisor Meetings





Facts to Keep in Mind:

1 in 36: The incidence of autism according to the Centers for Disease Control

82,735: Estimated number of people who are diagnosed with autism in Kentucky

Source: www.kyaca.org

\$3.5-5 million

The lifetime costs for individuals diagnosed with autism.

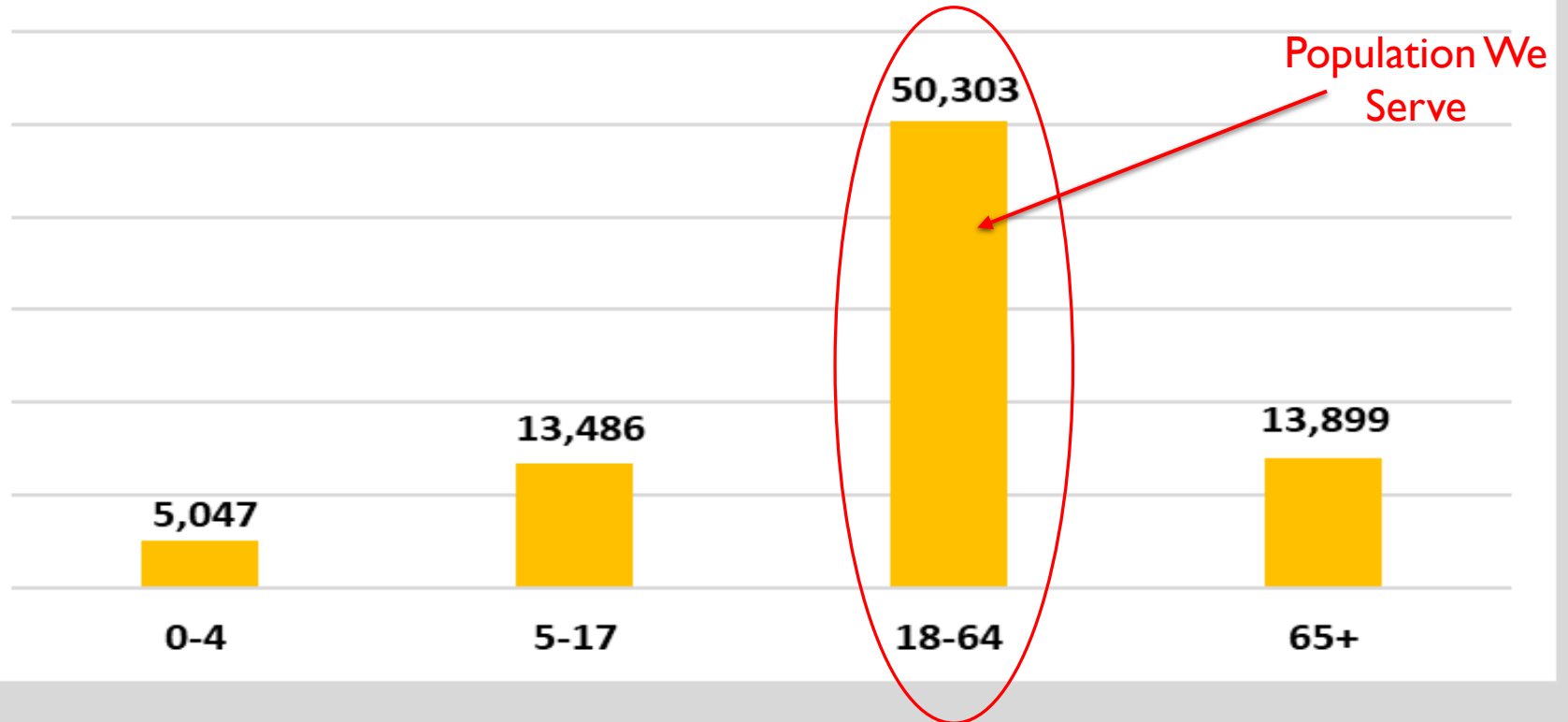
30%

Families who have children diagnosed with autism earn 30% less than other families.

\$50,000

Individual therapy costs per year for children with autism who are under 8 years old.

KY Autistic Population by Age





Transition Academy

Program Costs: \$1,400,000 per year

- Personnel
- Research
- Program Evaluation
- Expanding Services (transportation needs, etc.)

Note: The facility is paid for by generous support from Mr. Bill Gatton and Mr. Garry Watkins. The budget costs are operational only.





LifeWorks @WKU
Bridging gaps.
Building relationships.

LifeWorks Bridge & SKYCTC Bridge Programs

Program Costs: \$800,000 per year

- Personnel
- Facilities
- Operations

No. of participants = 50 (15 SKYCTC Bridge & 35 LifeWorks Bridge)

Actual cost per participant \$16,000

Tuition \$16,000





LifeWorks

@WKU

Bridging gaps.

Building relationships.

Investment Summary

TRANSITION ACADEMY: \$1,400,000 per year

LIFEWORKS BRIDGE &
SKYCTC BRIDGE: \$ 800,000 per year

\$2,200,000 per year

\$4,400,000 biennium

Over the next decade, an estimated **13,000** Kentucky youth will enter adulthood and age out of school-based autism services.

Source: www.kyaca.org

**Average Annual Cost of
HCBS Waiver Services by State**
(2009, National Council on Disability)

State	Home and Community Based Waiver
Kentucky	\$48,831
<i>Individual Lifetime Cost</i>	<i>\$2,636,874</i>

Cost/Benefit to State Government

State Cost of Funding Lifeworks Program 2 years	\$2,800,000
Cost Per Participant (28 graduates/2 years)	\$100,000
Graduates Per Year	14

Revenue Generated to State

Individuals Added to Workforce Per Year	
10% of participants unsuccessful	-0-
30% of participants 50% successful	2.1
60% of participants 100% successful	8.4
Employees Added by Lifeworks	10.5
Jobs Multiplier (Industry Average)	6
Total Jobs Created Per Year	63
Average Annual Salary Per Year	\$40,000
Total Wages Generated All Employees	\$2,520,000
Kentucky Income Tax Generated 5%	\$126,000
Average Work Life in Years	42
Total State Revenue Generated Per Class	\$5,292,000
Total State Revenue Per Graduate	\$378,000

State Cost of Support Without Lifeworks

Average Cost of HCBS Waiver Services by State Per Year Per Person	\$48,831
Average Life Span of Individual from age 18	54 yrs
Total Lifetime Cost of State Support per Participant	\$2,636,874

LIFETIME COST SAVINGS

LifeWorks
Transition Academy

RETURN ON INVESTMENT



Total State Benefit to Funding a Participant-Lifetime	<u>\$3,014,874</u>
Return to State per Dollar Invested	<u>\$30.15</u>
State's Annual Return on Investment	<u>57.83%</u>

