

••• *Serving People, Conserving Fish and Wildlife* •••



# MISSION

Conserve, protect and enhance Kentucky's fish and wildlife resources and provide outstanding opportunities for fishing, hunting, trapping, boating, shooting sports, wildlife viewing, and related activities



# WHO WE ARE

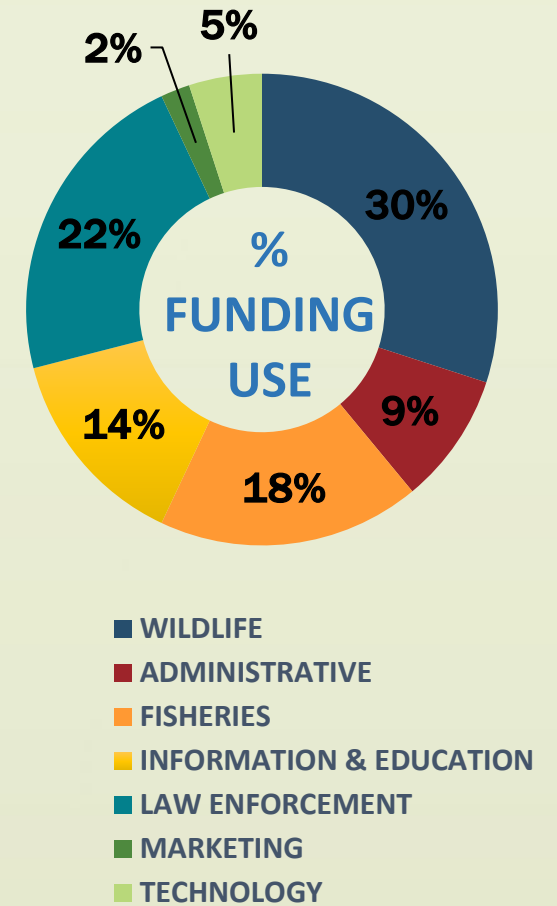
- Volunteer 9-member Commission board; members nominated by Kentucky anglers and hunters, appointed by the Governor, and confirmed by the Senate.
- The Commission recommends regulations, approves research, hires and advises the Commissioner.
- We employ about 600 full-time and seasonal staff.
- Headquartered in Frankfort at the historic “Game Farm”, but most of our staff work out of field offices across the state.
- We serve all Kentuckians and our visitors, and work with a wide array of partners to achieve our mission.





# WHAT WE DO

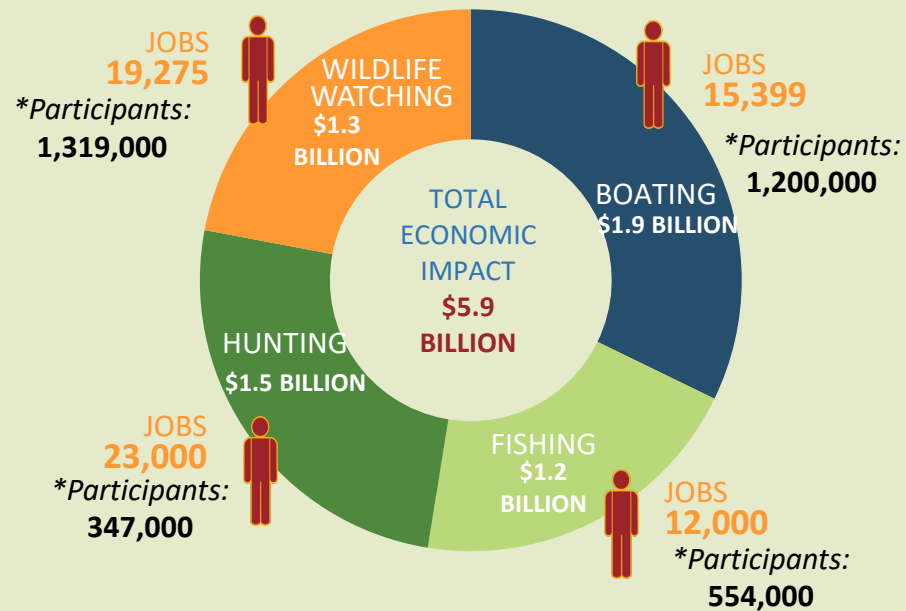
- Enforce hunting, fishing and boating laws across Kentucky for resource protection and public safety.
- Own over 165,000 acres and manage with partners over 1-million acres of land and water for the benefit of all fish and wildlife species and public access.
- Stock 5 million fish annually in public waters.
- Build and maintain public boat ramps, shooting ranges, fishing access areas, and other facilities.
- Assist over 16,000 private landowners with fish and wildlife habitat improvement.
- Inform and educate youths and adults through education and outreach programs.
- Restore streams and wetlands on private and public lands using special grants.





# Fish & Wildlife Recreation

*A Vital Force for Kentucky's Economy*



## Big Business in the Bluegrass State

- **\$5.9 Billion** in total economic impact
- **70,000 jobs** supported
- **1.5 Million + participants**
- Kentucky tourism is an \$11.8 billion industry

**Every \$1 KDFWR spends supports \$84 of benefit**



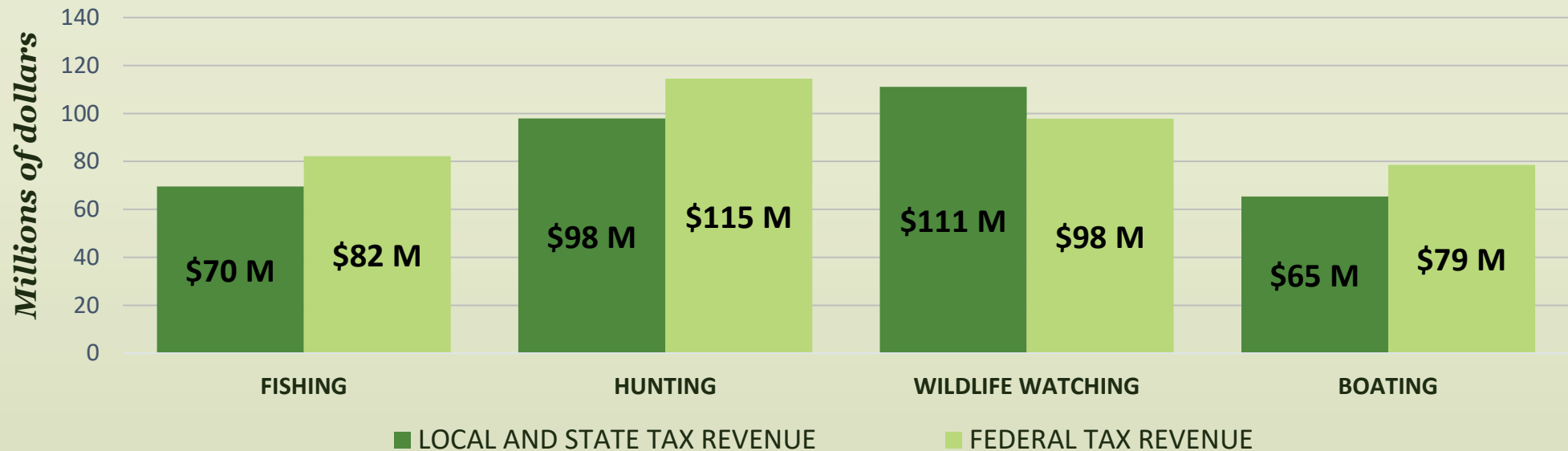
# Fish and Wildlife Recreation

*A Vital Force for Kentucky's Economy*

## Tax Revenues from Participant Expenditures in Kentucky

Local & State - \$344 Million/year

Federal - \$373 Million/year





## Fishing and Hunting Participation Rates

Fishing		Hunting	
Tennessee	14%	West Virginia	12%
West Virginia	14%	Tennessee	11%
<b>Kentucky</b>	<b>13%</b>	<b>Kentucky</b>	<b>8%</b>
Missouri	13%	Missouri	8%
Indiana	8%	Indiana	4%
Ohio	7%	Ohio	3%
Virginia	7%	Virginia	3%
Illinois	5%	Illinois	2%



## Resident & Non-Resident License Sales

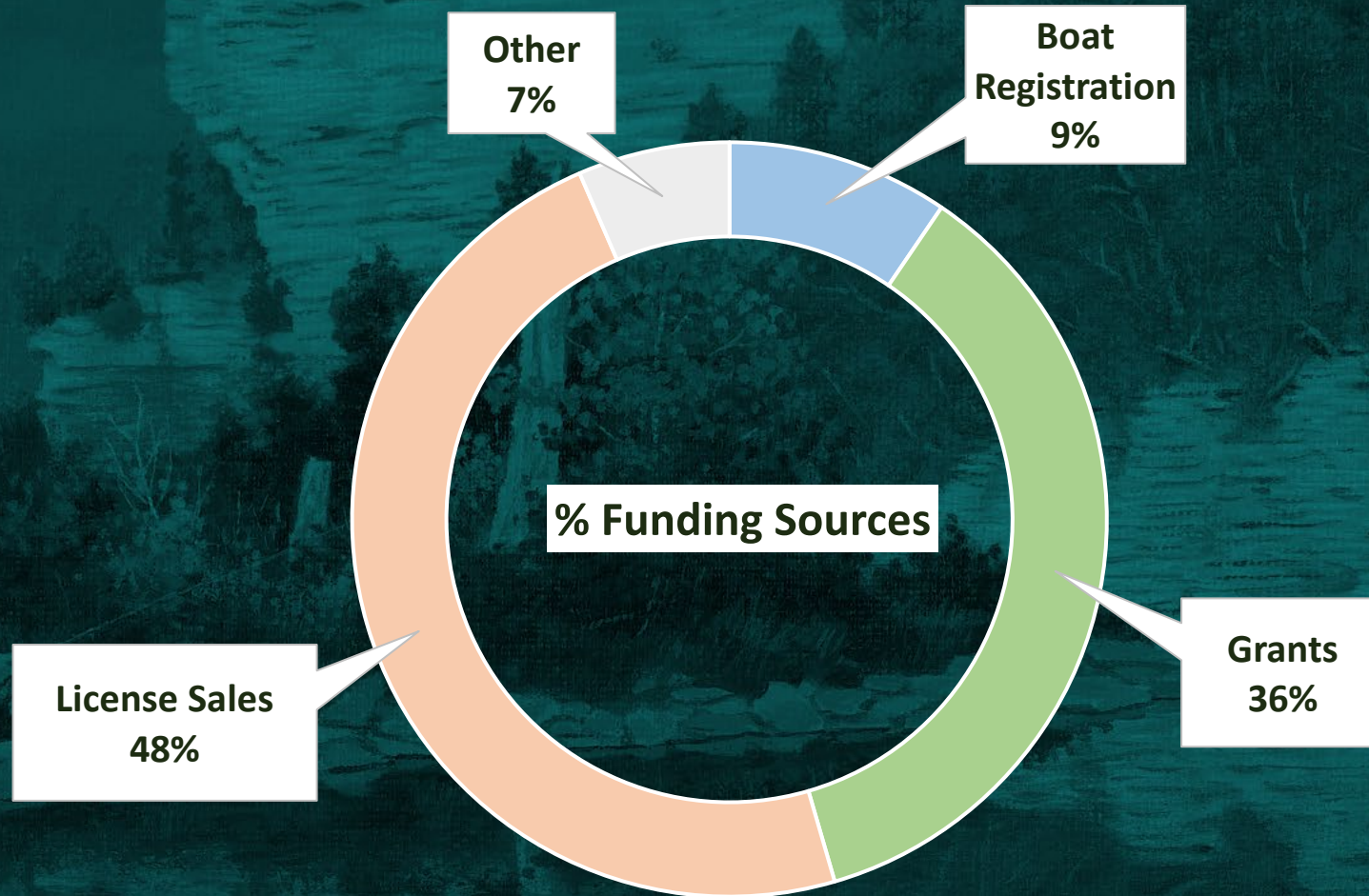
Licenses and permits (2022):

	Percent Sold	Licenses Sold	Percent Revenue	Total Sales	Per License Avg
<b>Resident/Both</b>	83.26754747	763,028	59.58771144	\$21,067,059.00	\$27.61
<b>Non-resident</b>	16.73245253	153,329	40.41228856	\$14,287,645.00	\$93.18
<b>Total</b>		916,357		\$35,354,704.00	





# How We are Funded





# Operational Funds

## Fish & Game Fund

- License Sales (\$35.5M)
- Boat Registration (\$6M)
- Miscellaneous (\$1.9M)

## Federal Fund (\$19.4M)

## Nongame Fund

- Tax check-off (KRS 141.465 & 150.165, \$20K)
- Interest





State Appropriated Operational Funds		% of State Tax	
Tennessee	Yes	Tennessee	No
West Virginia	Yes	West Virginia	No
<b>Kentucky</b>	<b>No</b>	<b>Kentucky</b>	<b>No</b>
Missouri	No	Missouri	Yes
Indiana	Yes	Indiana	No
Ohio	Yes	Ohio	No
Virginia	Yes	Virginia	No
Illinois	Yes	Illinois	No



# Special Projects

## Law Enforcement

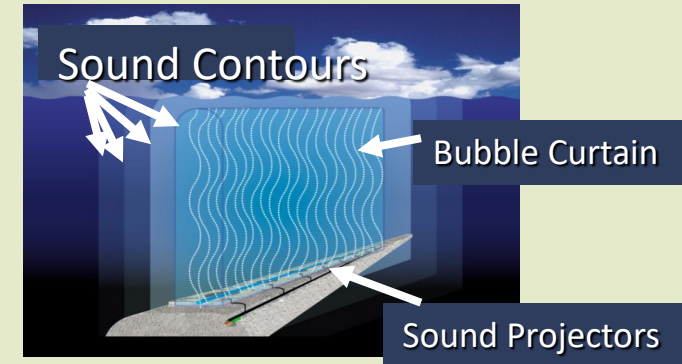


## Invasive Carp

- Commercial fishers harvested **11,541,784 pounds** of invasive carp statewide over the past 12 months.
- Kentucky Fish and Wildlife facilitated the harvest of **9,324,981 pounds** of invasive carp from Kentucky and Barkley lakes and paid out over \$745,998.49 in subsidy payments directly to commercial fishers in the last 12 months.

## Bio-Acoustic Fish Fence

- State-of-the-art experimental migration deterrent
  - On loan from Fish Guidance Systems Ltd
  - 'Wall of sound', lights, and air bubble curtain
- Downstream lock approach at Lake Barkley Dam
- Equipment sits on riverbed, barges pass over top



- Multi-year evaluation through 2023
- Passage evaluated with tagged Asian carp
- On/off alternated weekly
- Preliminary results are encouraging



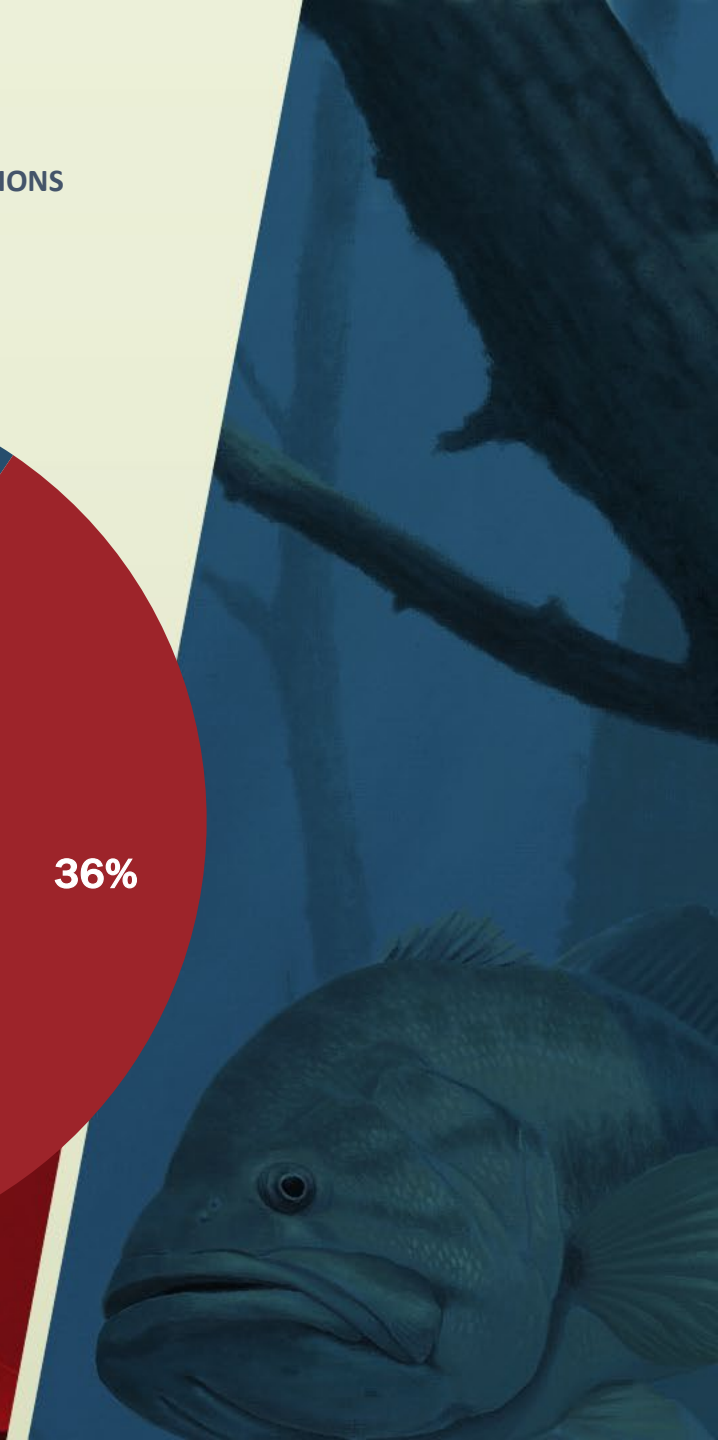
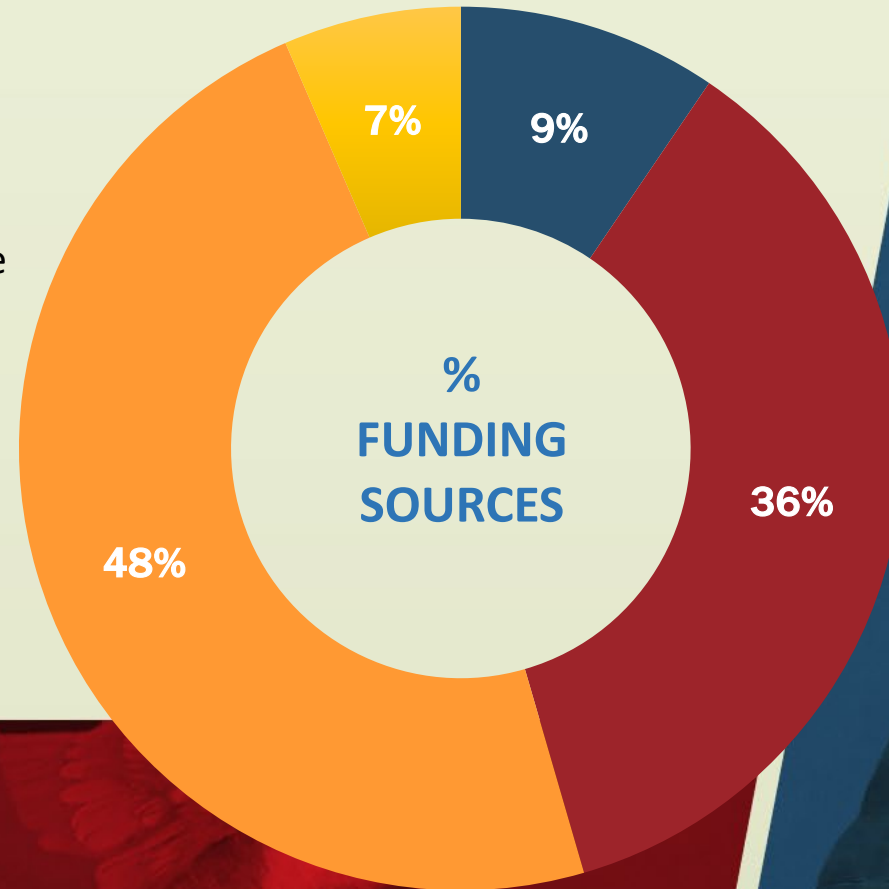
# How You Help

Kentucky Fish and Wildlife is funded by user fees and grants rather than state taxes.

- BOAT REGISTRATIONS
- GRANTS
- LICENSE SALES
- OTHER

## *You invest in conservation every time you:*

- ❖ Buy a hunting or fishing license for yourself or someone else
- ❖ Take someone hunting or fishing
- ❖ Register your boat
- ❖ Funding for special projects





# Questions?



*Thank you!*