



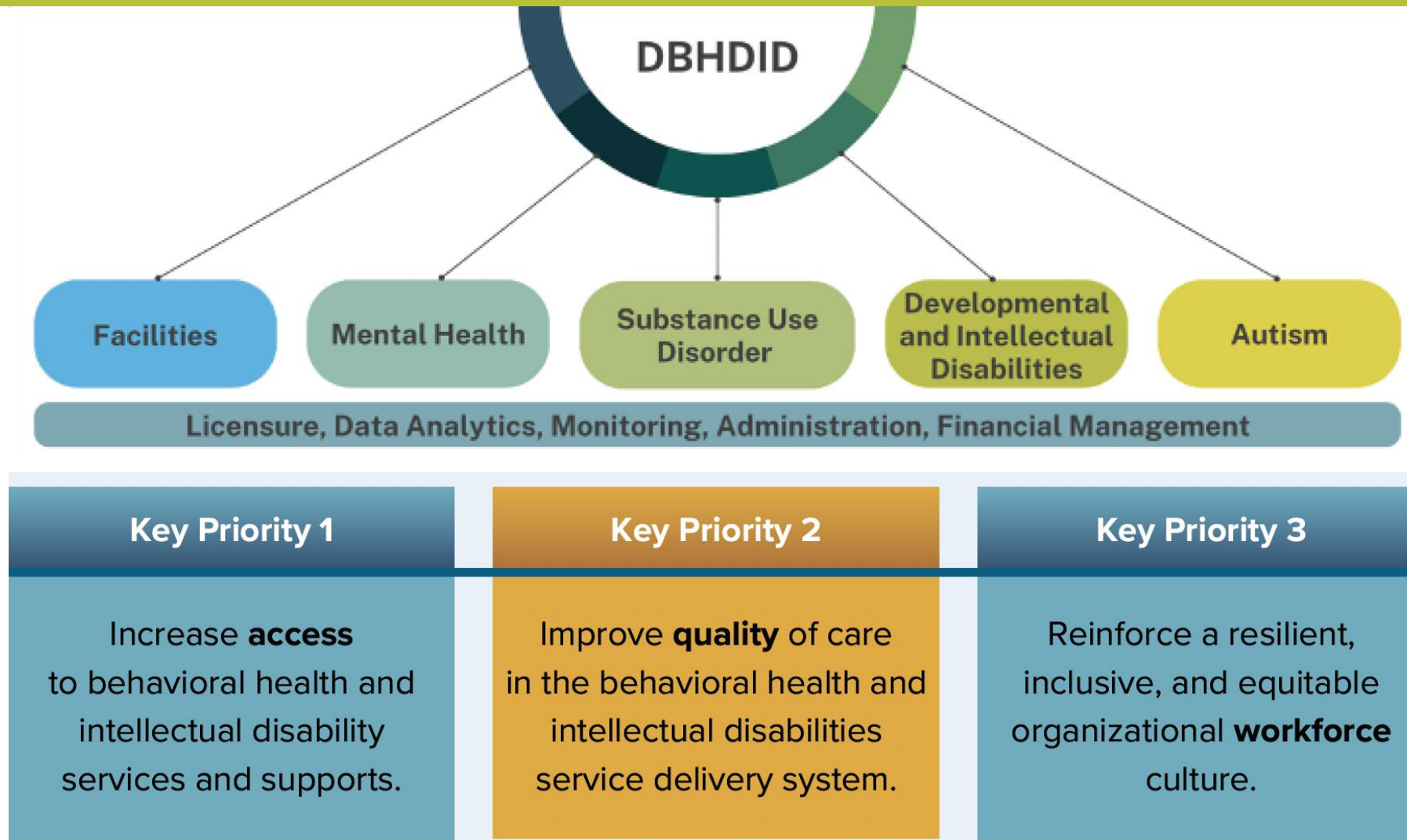
CABINET FOR HEALTH
AND FAMILY SERVICES

Update on Substance Use Disorder Programs and State Run Psychiatric Facilities
Budget Review Sub Committee on Health and Family Services

Dr. Katie Marks, DBHDID Commissioner
Stephanie Craycraft, DBHDID Deputy Commissioner
Dr. Allen Brenzel, DBHDID Medical Director

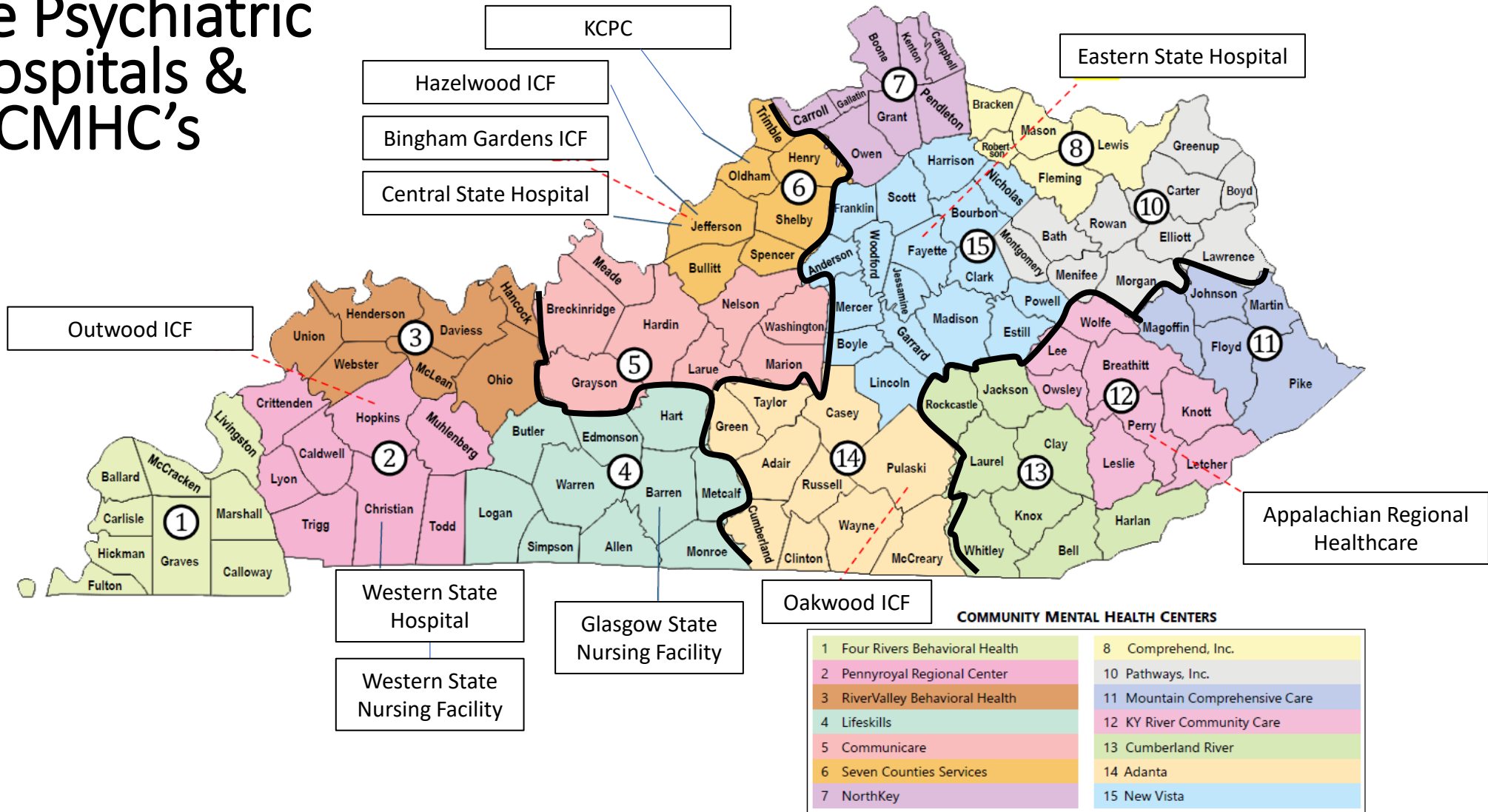
11/06/2024

Mission: Promote health, well-being, and resilience for all; facilitate recovery for people affected by mental illness and substance use; and support people with developmental and intellectual disabilities.



Psychiatric Hospitals

State Psychiatric Hospitals & CMHC's



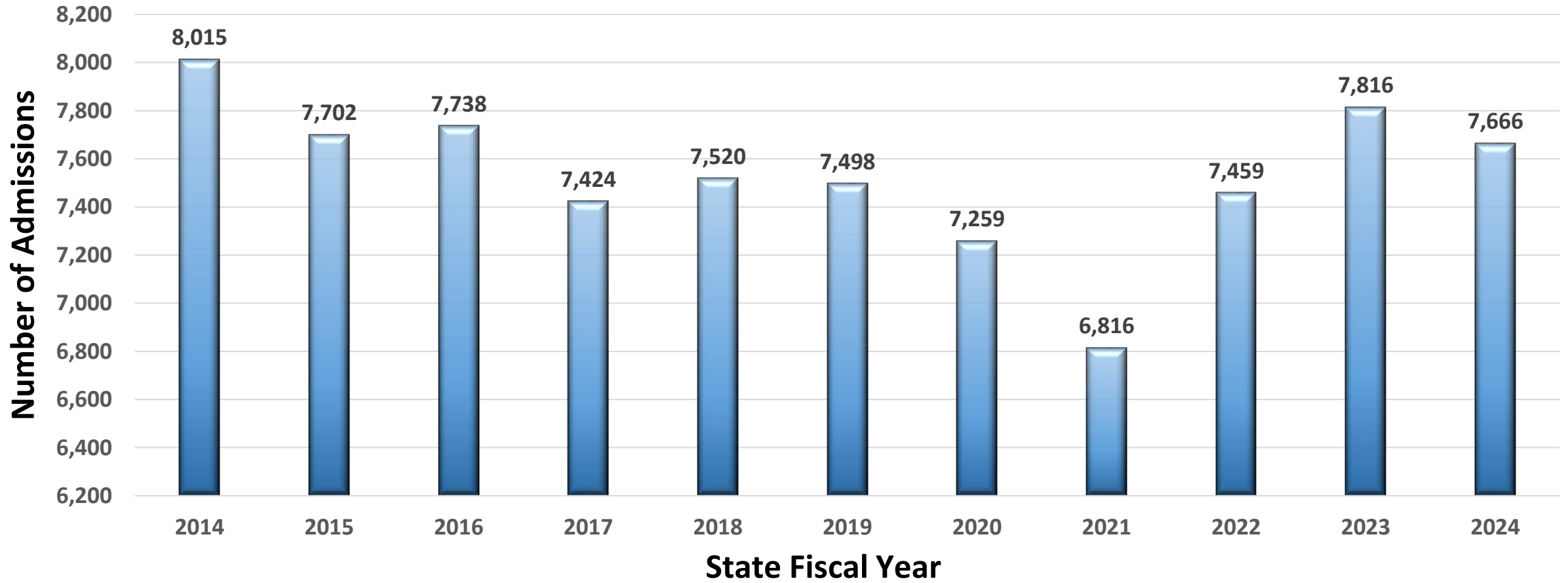
Kentucky's State Psychiatric Facilities

Facility Type	Location	Operation	FY24 Average Daily Census
Acute Psychiatric Hospital			
Central State Hospital	Louisville	State-owned/operated	47
Western State Hospital	Hopkinsville	State owned/operated	143
Eastern State Hospital	Lexington	State owned/ contracted for operation	149
Appalachian Regional Healthcare	Hazard, Harlan, Prestonsburg	Contracted	79
Forensic Services			
Kentucky Correctional Psychiatric Center	LaGrange	State-owned/operated	44

State Psychiatric Facilities: Populations Served

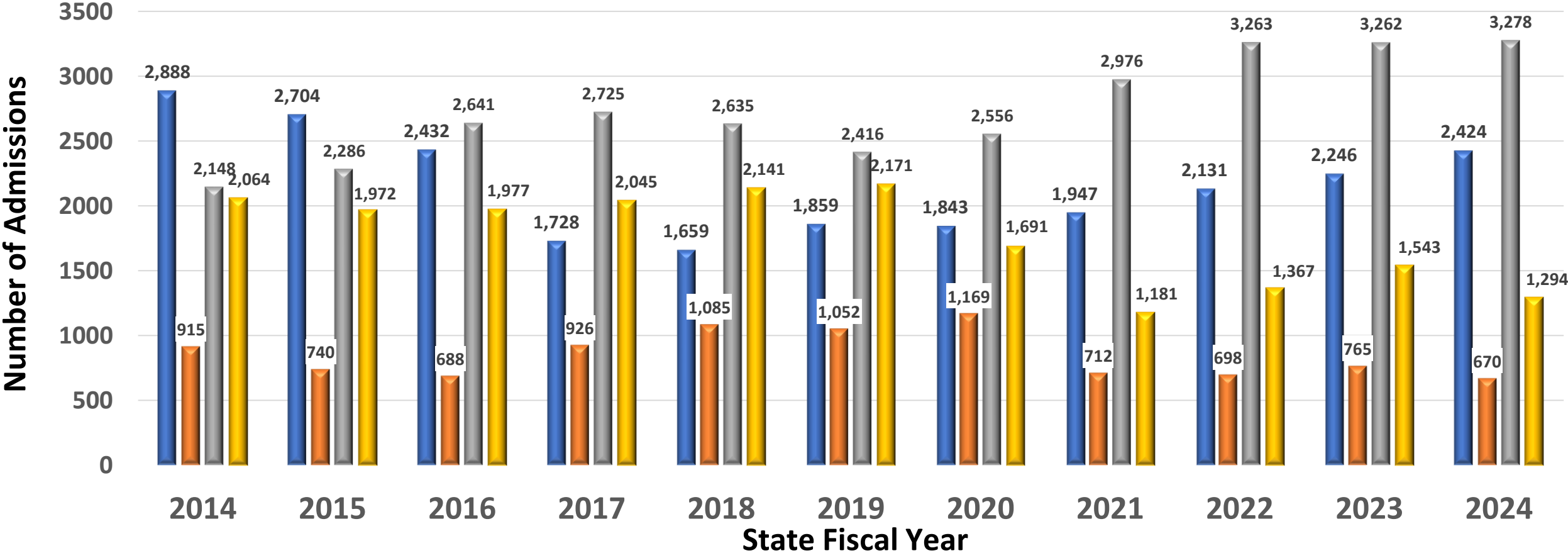
- Primarily serve adults who are involuntarily hospitalized under civil commitment proceedings (202A)
- Criteria include:
 - Have a mental illness
 - Are a danger to self or others
 - Cannot be cared for in less restrictive setting
 - Can benefit from hospitalization
- State psychiatric hospitals do not serve primary substance use disorder (SUD) but treat co-occurring SUD
- Individuals with developmental or intellectual disability (DID) are only served if they have a mental health diagnosis
- Kentucky does not operate state hospitals for children

State Psychiatric Hospital: Total Admissions per Year

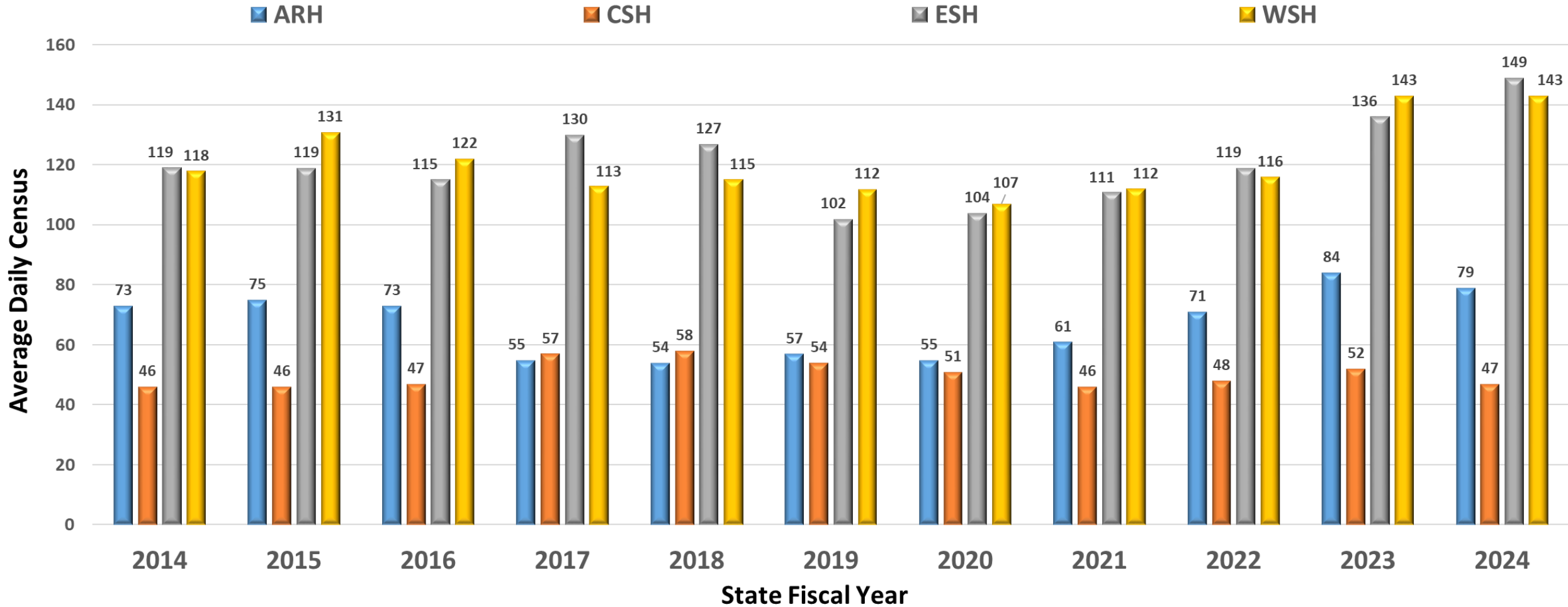


State Psychiatric Hospital: Hospital Admissions by Year

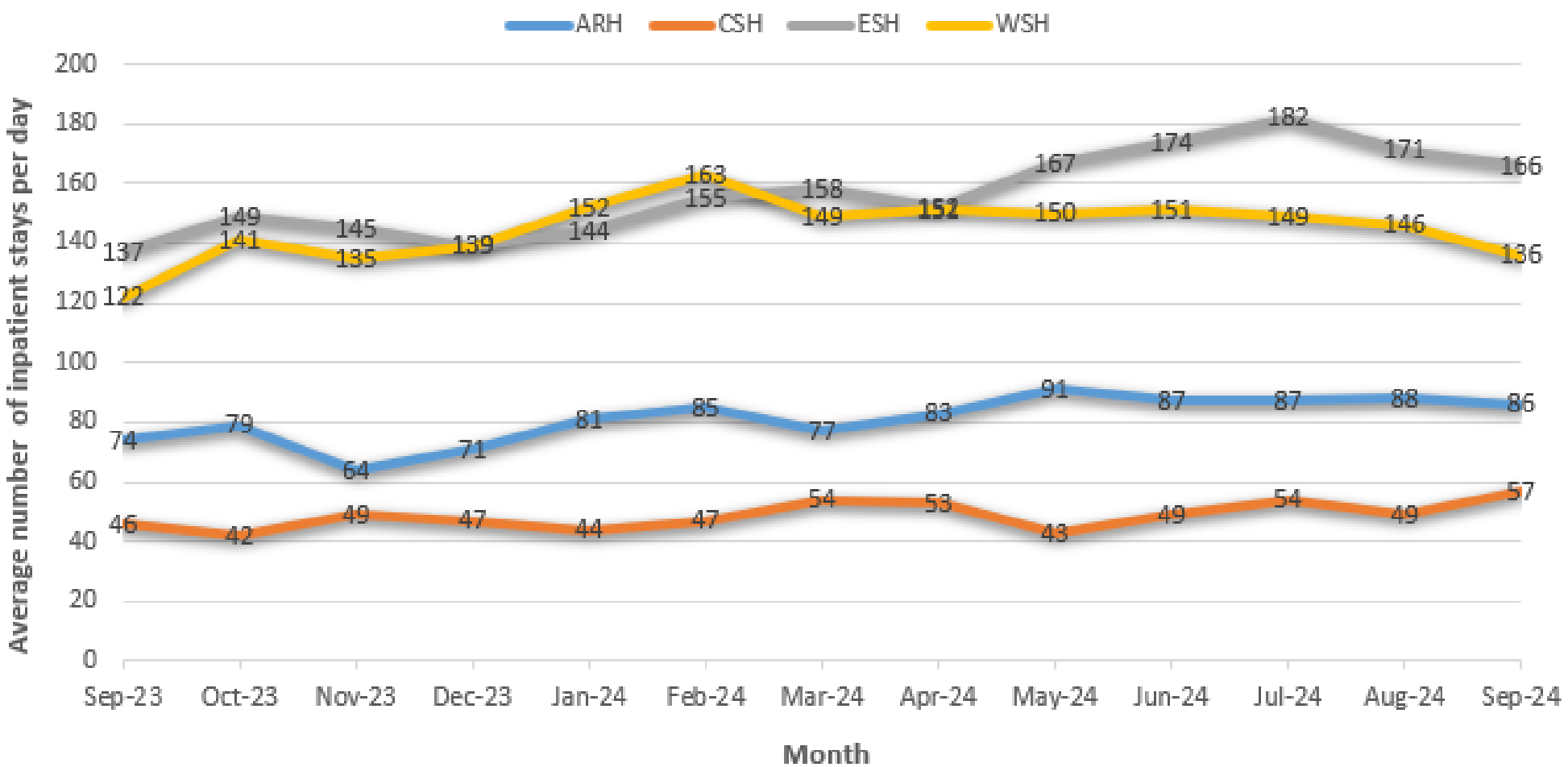
ARH CSH ESH WSH



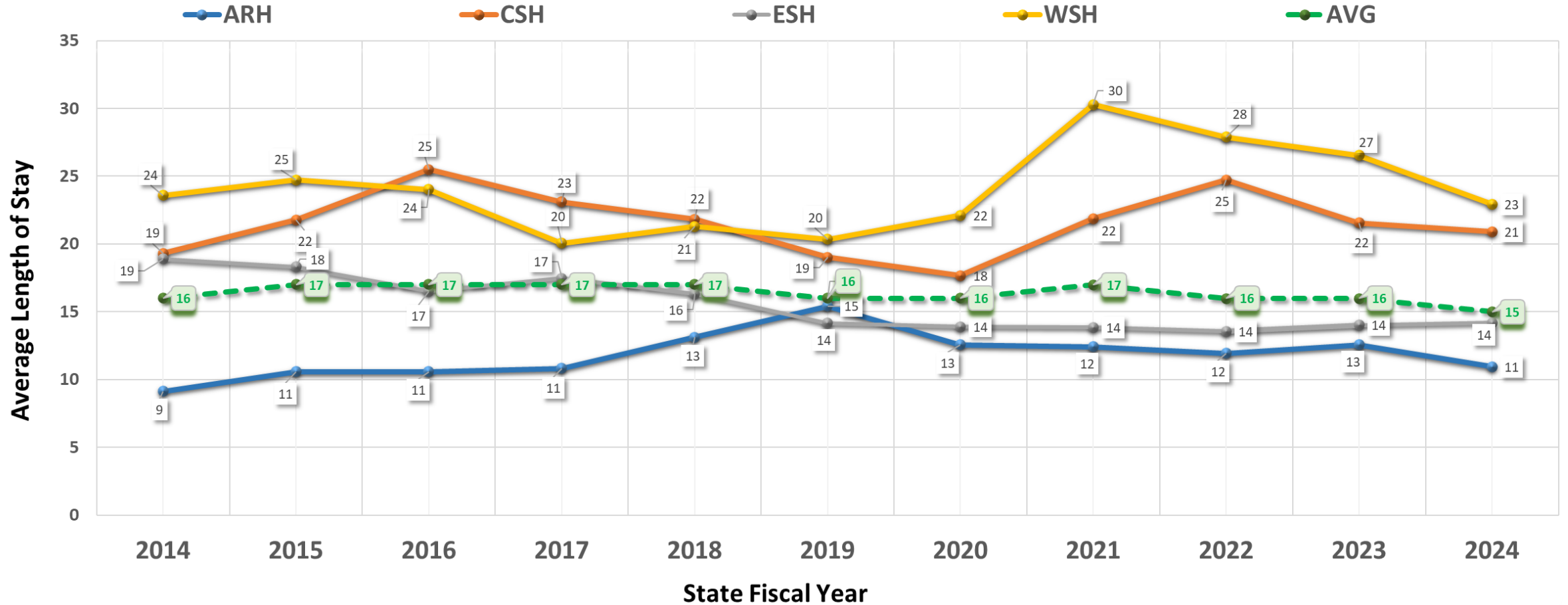
State Psychiatric Hospital: Average Daily Census (Year)



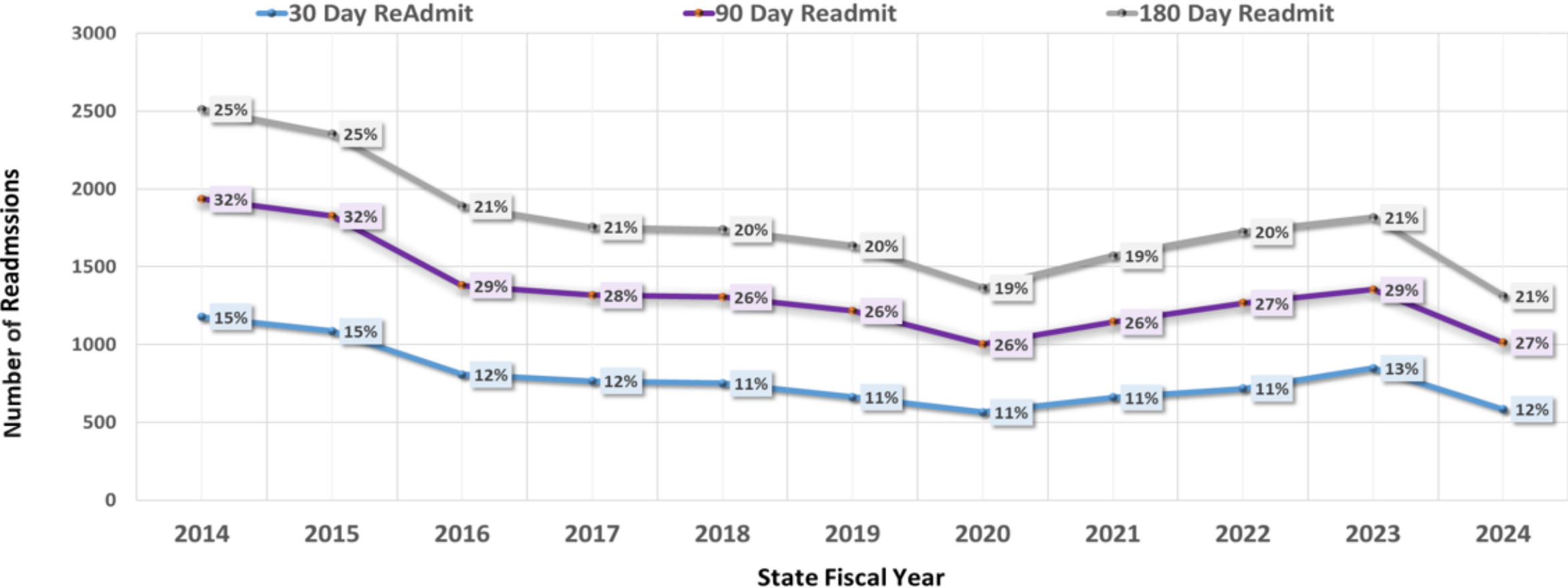
State Psychiatric Hospital: Average Daily Census (Month)



State Psychiatric Hospital: Average Length of Stay



State Psychiatric Hospitals: Average Readmission Rate



State Psychiatric Hospitals: Annual Expenditures

Hospital	Expenditures FY 2023	Expenditures FY 2024	Budget FY 2025
Central State Hospital	\$24,042,440	\$26,881,545	\$26,343,900
Eastern State Hospital	\$69,378,599	\$69,723,185	\$73,156,300
Western State Hospital	\$55,401,311	\$59,361,845	\$57,580,900
Appalachian Regional Hospital	\$6,960,429	\$7,997,921	\$14,600,000
Total	\$155,782,779	\$163,964,496	\$171,681,100

State-Owned Psychiatric Hospitals: Staffing

Staffing	FY 2023	FY 2024
Central State Hospital	227	268
Eastern State Hospital	403	427
Western State Hospital	468	527
Total	1,098	1,222

State-Owned Psychiatric Hospital Fund Sources

Fund Sources (FY 2023 – 2024)	Percent
General Fund	60%
Disproportionate Share Hospital (DSH)	21%
Managed care organizations	9%
Medicare	7%
Private insurance/Payors	1%
Federal	Less than 1%
Medicaid	2%

Kentucky Correctional Psychiatric Center (KCPC)

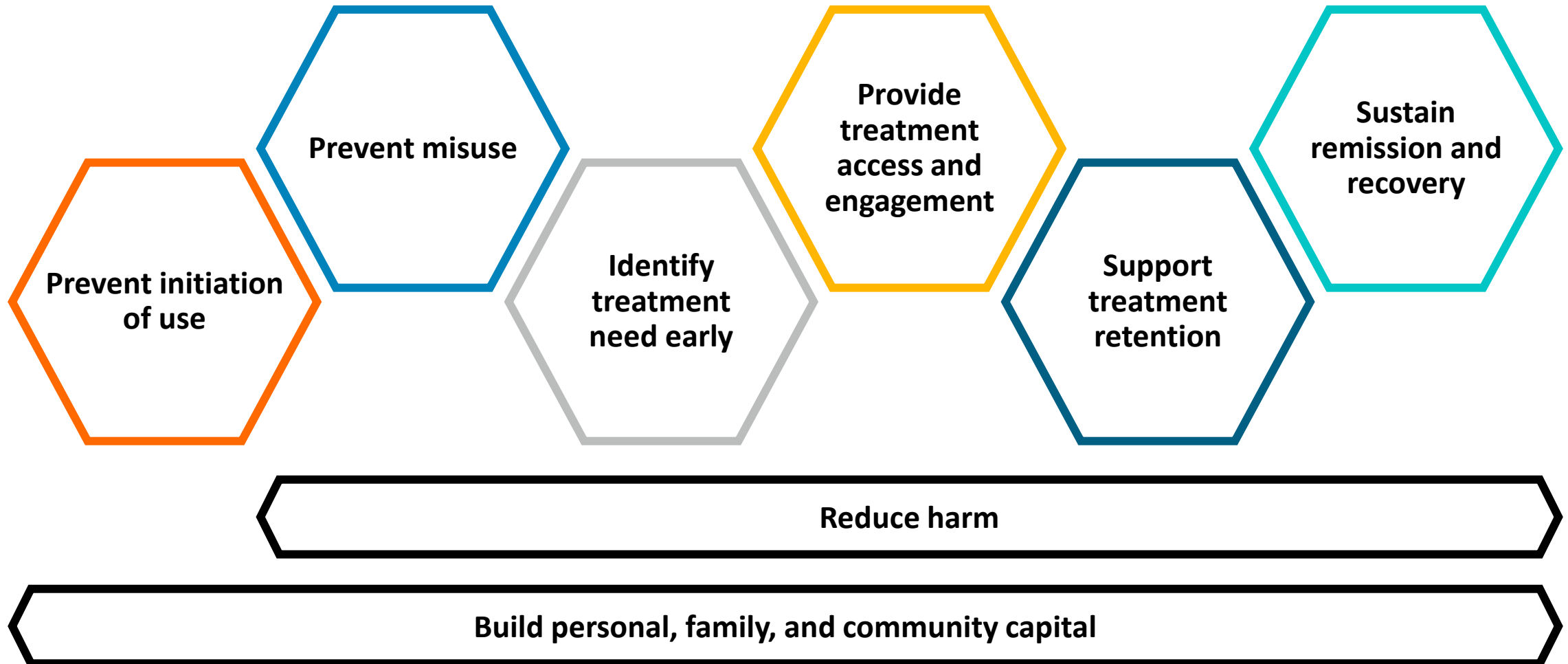
- Forensically-secure psychiatric hospital
 - Competency and criminal responsibility pre-trial evaluations
 - Provides inpatient treatment for competency restoration
 - Provides inpatient treatment for patients committed under KRS 202C
-
- Increased average daily census from 34 in FY 2023 to 44 in FY 2024
 - Staff increase from 135 in FY 2023 to 154 in FY 2024
 - Expenditure increase from \$11.5 million in FY 2023 to \$17.2 million in FY 2024

Substance Use Prevention, Treatment, and Recovery

Substance Use Disorder Funding

Fund	FY25
General Fund	\$ 7,986,700
Tobacco	\$ 5,424,200
State Opioid Response Grant IV	\$ 37,220,300
Substance Use Prevention, Treatment, & Recovery Block Grant	\$ 21,295,600
Other federal grants	\$ 6,700,400
SB 90 Conditional Dismissal Program	\$ 10,500,000
Office of Drug Control Policy	\$ 6,000,000
Driving under the influence (DUI Fees)	\$ 1,100,000
Total	\$ 96,227,200

Cascade of Care Framework



Prevention + Harm Reduction Strategies



Children and Youth Behavioral Health

Behavioral Health Promotion and Substance Use Prevention



33,774,932

universal prevention intervention **touch points** aimed at reducing substance use and improving community education, health and wellbeing

Reduction in past 30-day substance use among 10th graders from 2010 to 2021:
(KY Incentives for Prevention (KIP) survey)

↓ 43% decrease in past 30-day cannabis use

↓ 50% decrease in past 30-day alcohol use

↓ 79% decrease in past 30-day cigarette use

Youth and Family Peer Support

700
first-time visitors

to the **12** Transition-Age Youth Launching Realized Dreams (**TAYLRD**) drop-in centers



116%
increase



in # of individuals receiving Youth Peer Support at CMHCs

Service Members Veterans and their Families

92

Kentucky schools awarded the Purple Star designation



107

Purple Star Liaisons

145

Individuals have completed the "Military Youth in Kentucky's Schools" training

3

"All Purple" counties



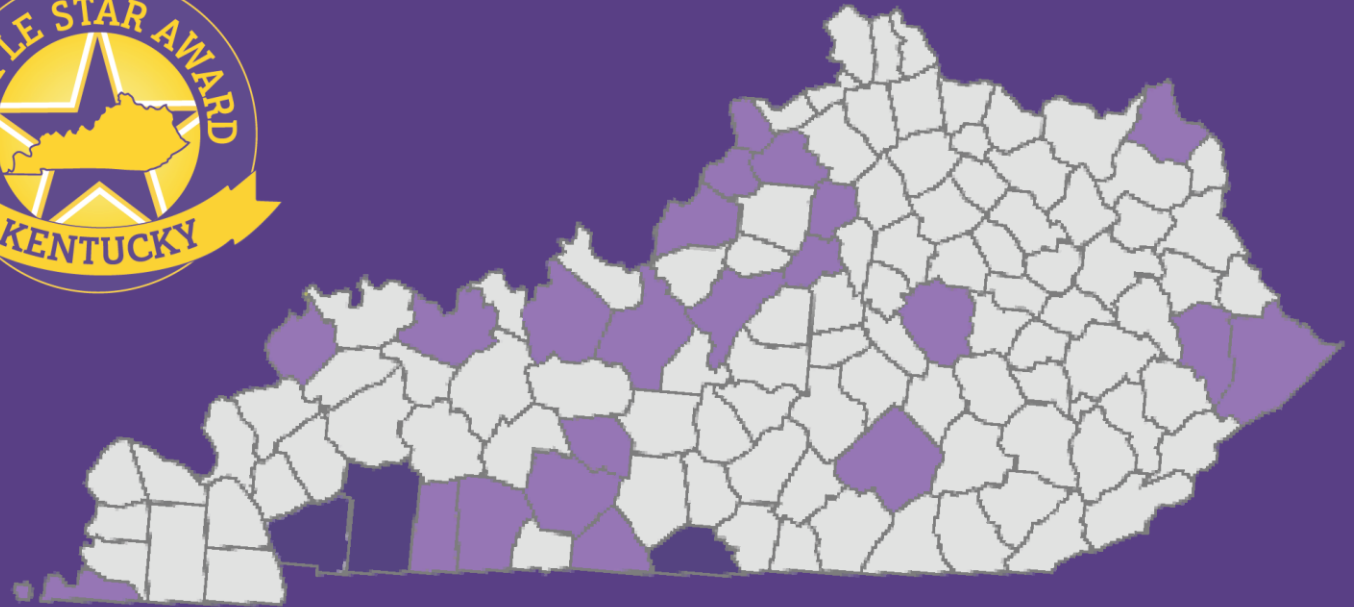
Counties where all schools in at least one public school district have received the Purple Star Award



County contains at least one Purple Star school



No current Purple Star schools



Pregnant and Parenting Families



KY-Moms

Maternal Assistance
Towards Recovery

2,899 activities were conducted focused on pregnant/postpartum substance use prevention services/messages with **49,910** persons reached



605 new residential beds made available to pregnant and parenting women

11 grants totaling **\$2,984,000** awarded to treatment agencies to prevent and address neonatal abstinence syndrome and support family attachment and reunification



- Reduce stigma by:
 - Increasing knowledge about opioid use disorder
 - Improving attitudes toward those living with and/or in recovery from opioid use disorder
 - Increasing awareness of resources and services
- Reduce overdose by:
 - Increasing awareness of fentanyl
 - Increasing knowledge about overdose prevention

**SHATTER
PROOF™**
STRONGER THAN ADDICTION



Statewide Suicide and Crisis Lifeline

SHORTER NUMBER. BROADER MISSION.

988 is up and running in Kentucky

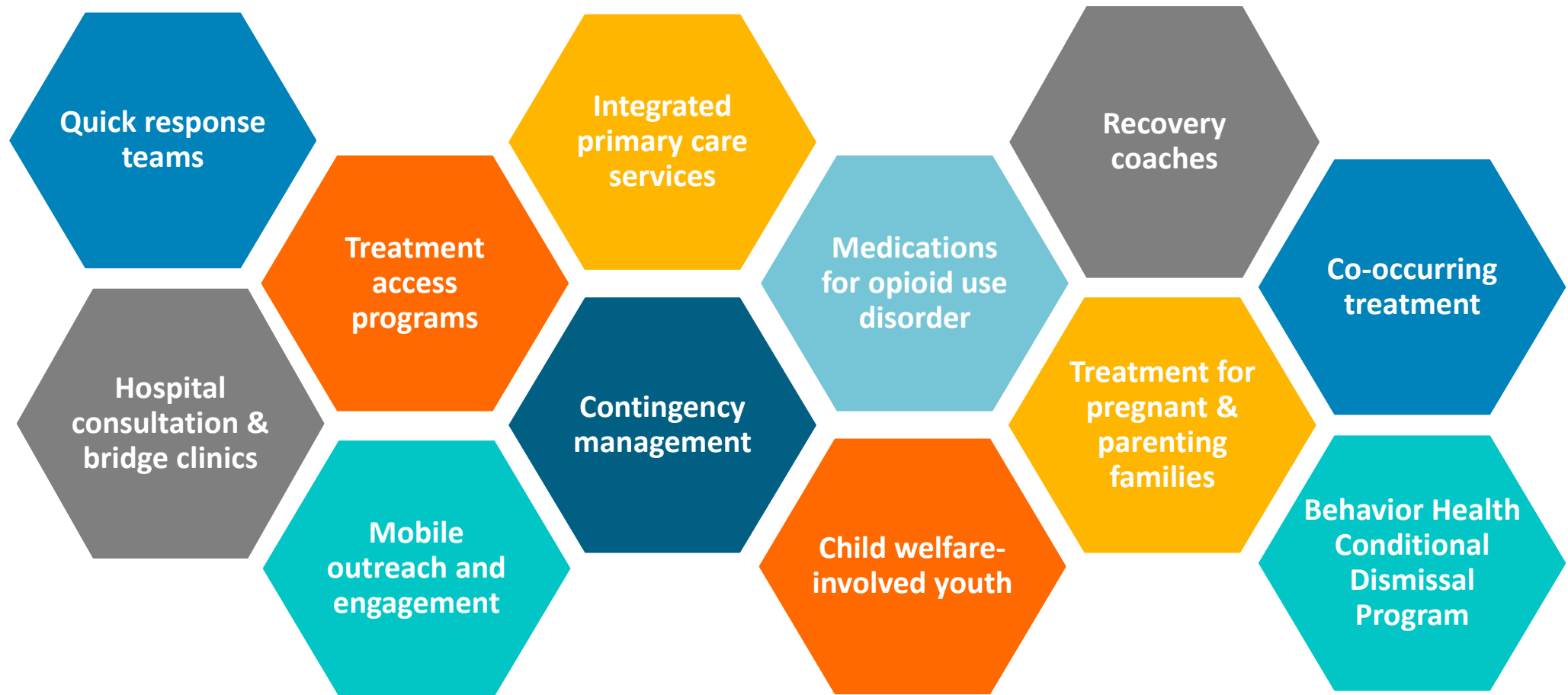
Kentuckians in crisis can now connect with suicide prevention, mental health, and substance use counselors using a nationwide, easier-to-dial phone number – 988. Phone service providers will now direct 988 calls to the existing national lifeline with its 13 Kentucky call centers. And connection to additional crisis services will be provided if necessary.

If you or someone you know is in crisis, someone to talk to is just a click away.



Treatment Strategies

Outreach, Engagement, Access, Retention



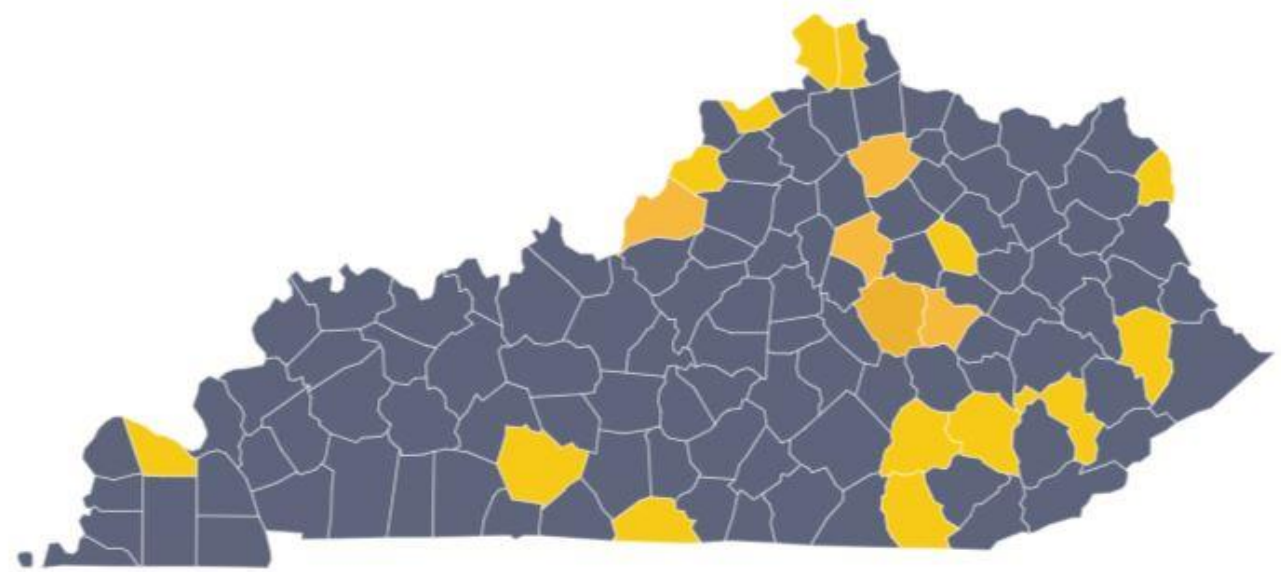
Hospital service models create a bridge to treatment

Bridge Navigator

Bridge Clinic (lower volume)

Bridge Clinic (higher volume)

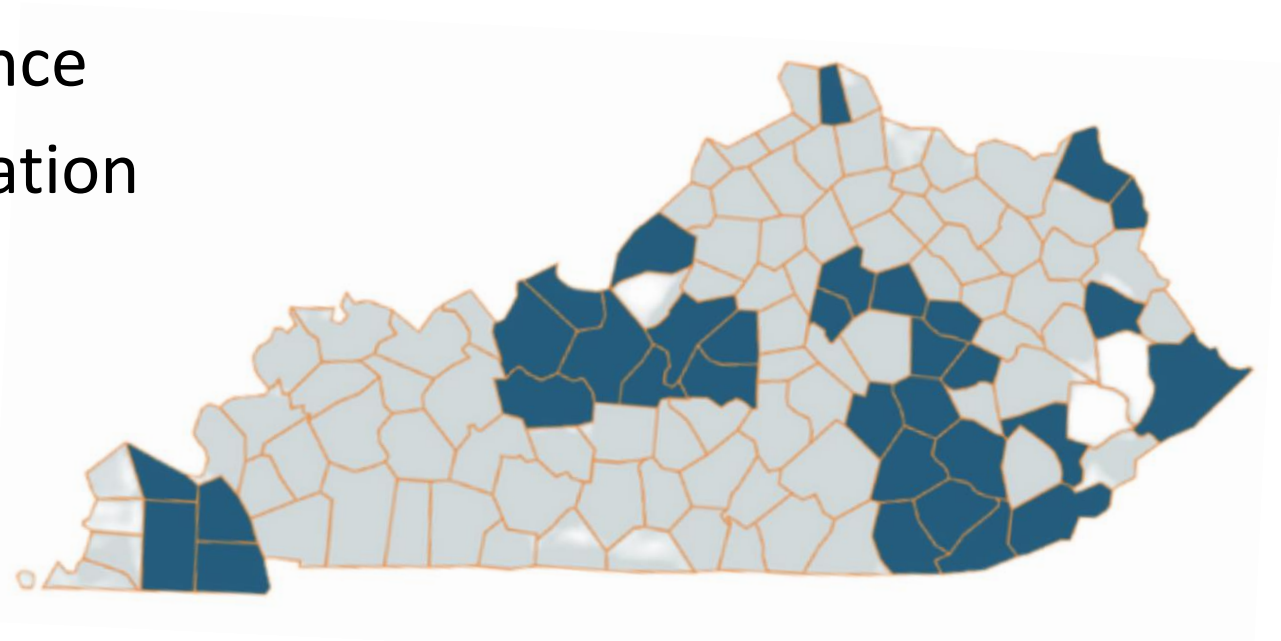
University hospital hub



Quick Response Teams

provide assertive outreach to overdose survivors

- Non-judgmental, non-coercive outreach to survivors and family
- Lived experience driven
- Home visits + community presence
- Harm reduction services + education
- Treatment linkage
- Ongoing follow-up
- Naloxone box installation



FindHelpNow.org/KY

Start Here To Find Treatment and Recovery Openings

Use this website to find facilities and providers who are actively taking new clients. We work with hundreds of mental health treatment, substance use disorder treatment, naloxone, and recovery housing organizations in Kentucky to bring you up-to-date and accurate information and available openings.

Experiencing a Crisis? Call or text [988](tel:988) or [Live Chat](#).

Need help finding substance use disorder treatment? Have questions about treatment or recovery? Contact our partners at the KY HELP Statewide Call Center to speak with a screening and referral specialist Monday through Friday from 8:30 am to 10:00 pm and Saturday and Sunday from 8:30 am to 5:30 pm EST/EDT at [1-877-318-1871](tel:1-877-318-1871).

Mental Health Treatment



Start Your Search

Substance Use Disorder Treatment



Start Your Search

Recovery Housing



Start Your Search

Naloxone



Start Your Search

Recovery Capital

supports remission and sustains long-term recovery

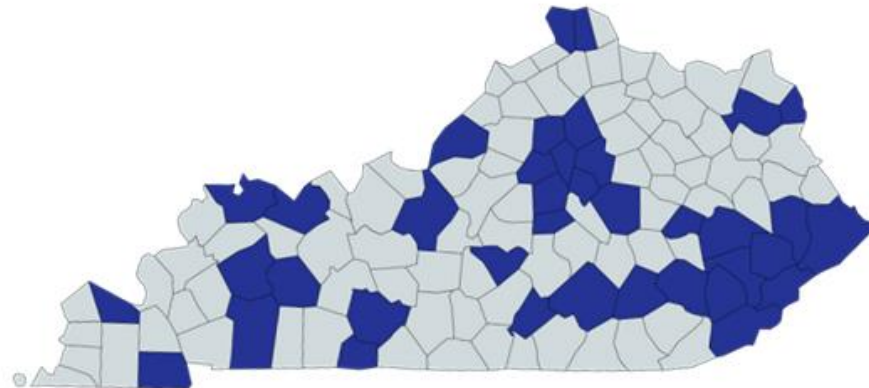


Kentucky Recovery Housing Network

- National Alliance for Recovery Residence (NARR) standards
- Technical assistance to meet the NARR standard
- Education on best practices
- Community Advisory Board

 256 Residences

 3,550 beds



Kentucky Opioid Response Effort (KORE) FY 2023

KORE contracted with **70** entities to operate >150 programs and initiatives



18,082

Individuals received
treatment services



14,632

Individuals received
recovery services



96,786

Naloxone units
distributed



5,124

Overdose reversals or
replacement requests

Behavioral Health Licensure & Certification

Alcohol and other drug entity (AODE) licensure

Narcotic treatment programs

Peer Support Specialist curriculum

Targeted case management curriculum

DUI program monitoring

Questions?

