

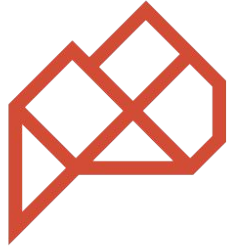


LOJIC



A Very
"Spatial Partnership"

www.lojic.org



LOJIC *Our Partners...*



Louisville Metro Government



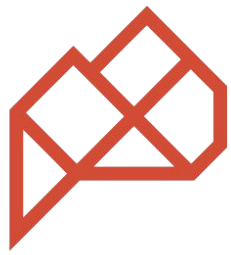
Metropolitan Sewer District



Jefferson County PVA



Louisville Water Company



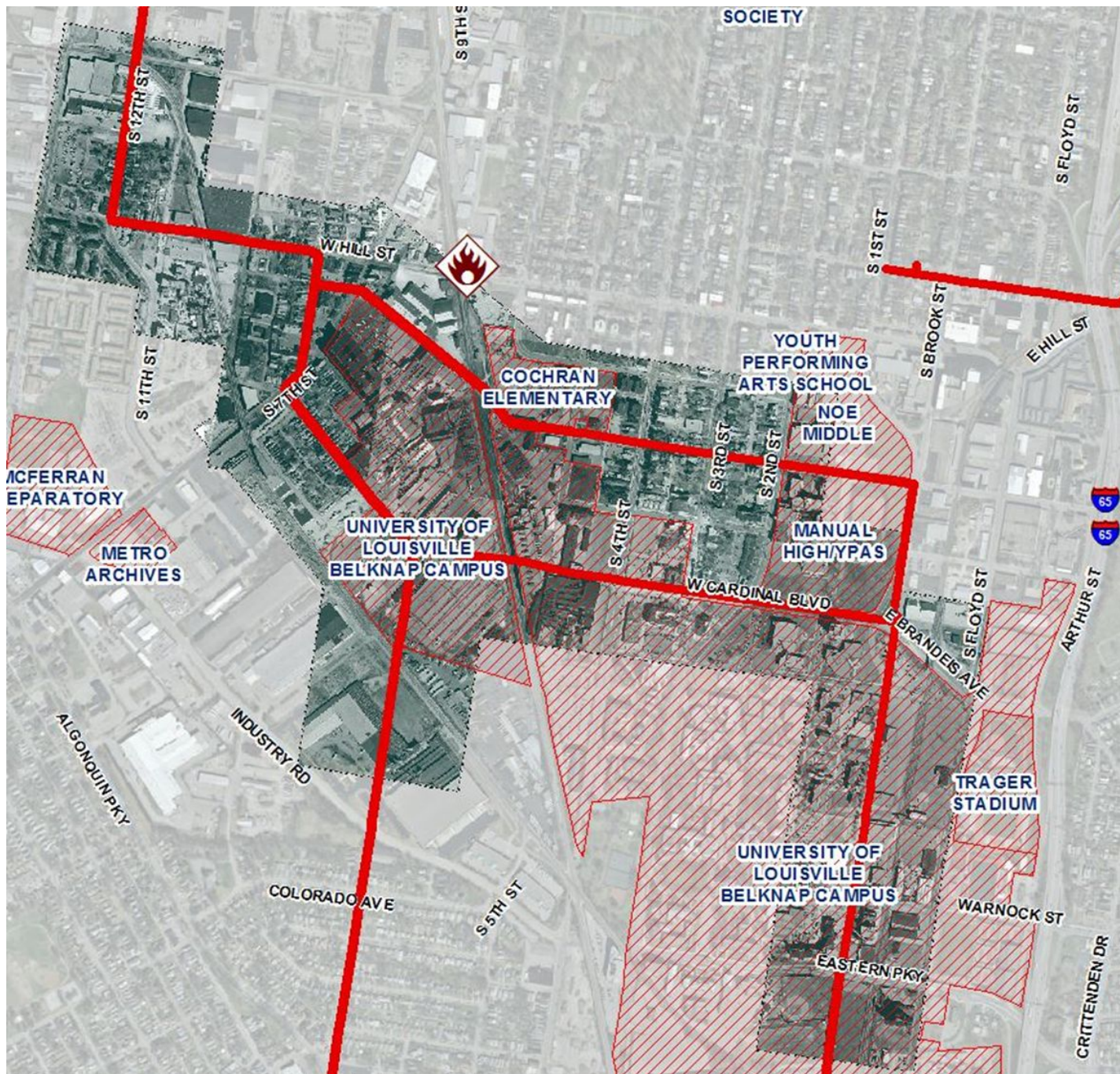
LOJIC

Participant Licensees...

- Anchorage-Middletown Fire EMS
- Bullitt County
- Oldham County
- Center for Neighborhoods
- City of Jeffersontown
- Lou. U.S. Corps of Engineers
- Jefferson County Public Schools
- Kentucky Transportation Cabinet
- KIPDA
- LG&E-KU
- Louisville Metro Housing Authority
- Pleasure Ridge Park Fire
- TARC
- University of Louisville



“We need a shared mapping system!”
Old Louisville Sewer Explosion Feb. 13, 1981

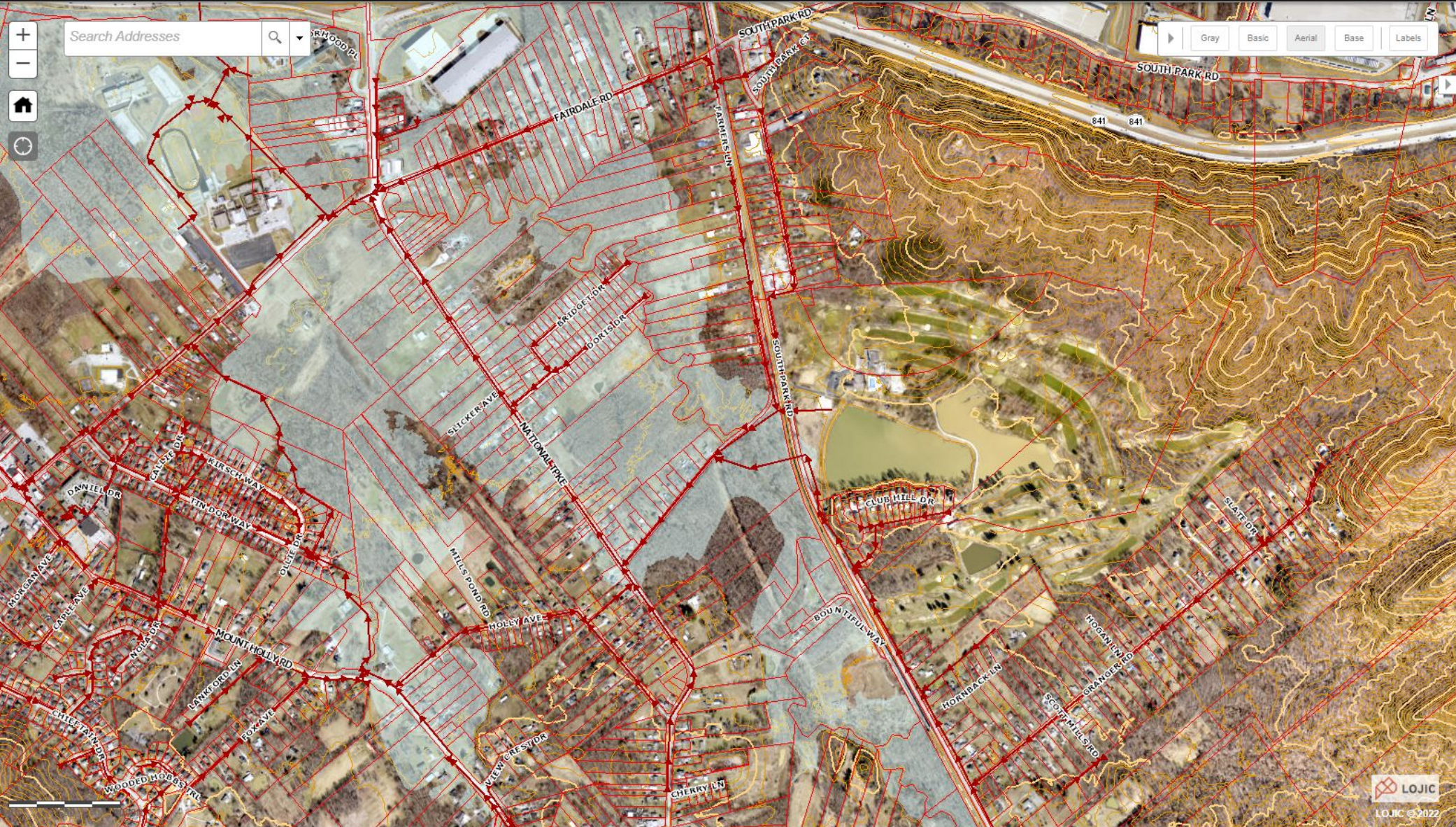


Old Louisville Sewer Explosion

Approximately 13 miles of old combined sewer lines were damaged or destroyed.

Thankfully there were no fatalities. Residents reported “manhole covers flying through the air like frisbies.”

MSD and City officials began talking about digital mapping technologies to facilitate infrastructure data sharing.



Search Addresses

Gray Basic Aerial Base Labels

Layers Tools Reports

- Transportation
- Taxing Districts
- Environmental
- Preservation
- Floodplain
 - Jefferson FEMA FIRM Map Panels
 - Jefferson Local Regulatory Floodplain/Conveyance Zones
 - Floodplain
 - Conveyance Zone
 - Jefferson Combined Sewer Floodprone Areas
 - Jefferson FEMA 100 Year (1% Annual) Review Zones
 - Floodplain
 - Floodway
- Planning
- Open Spaces
- Elevation
 - Bullitt Spot Heights
 - + Spot Heights
 - Jefferson Spot Heights
 - + Spot Heights
 - Oldham Spot Heights
 - + Spot Heights
 - Bullitt 2 foot Contours (2,400+)
 - Intermediate Contours
 - Intermediate Depressions

Search Addresses



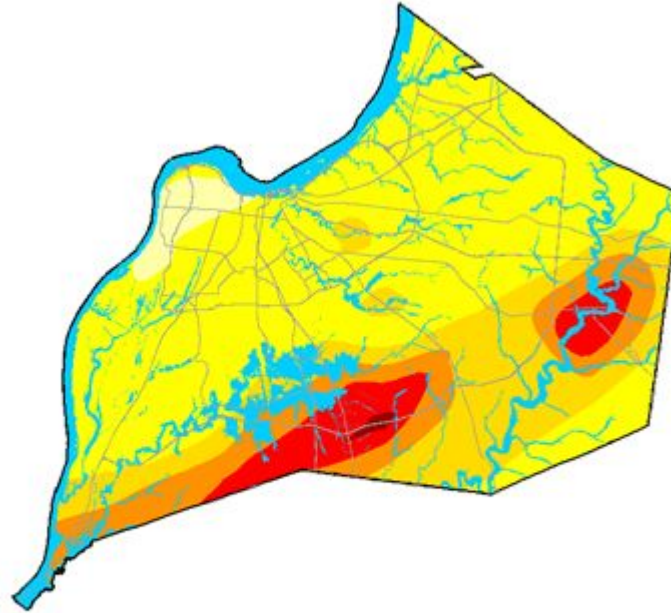
Map style selector: Gray, Basic, Aerial, Base, Labels

Layers Tools Reports



- Transportation
- Taxing Districts
- Environmental
- Preservation
- Floodplain
 - Jefferson FEMA FIRM Map Panels
 - Jefferson Local Regulatory Floodplain/Conveyance Zones
 - Floodplain
 - Conveyance Zone
 - Jefferson Combined Sewer Floodprone Areas
 - Jefferson FEMA 100 Year (1% Annual) Review Zones
 - Floodplain
 - Floodway
- Planning
- Open Spaces
- Elevation
 - Bullitt Spot Heights
 - + Spot Heights
 - Jefferson Spot Heights
 - + Spot Heights
 - Oldham Spot Heights
 - + Spot Heights
 - Bullitt 2 foot Contours (2,400+)
 - Intermediate Contours
 - Intermediate Depressions

1997 Ohio River Flood

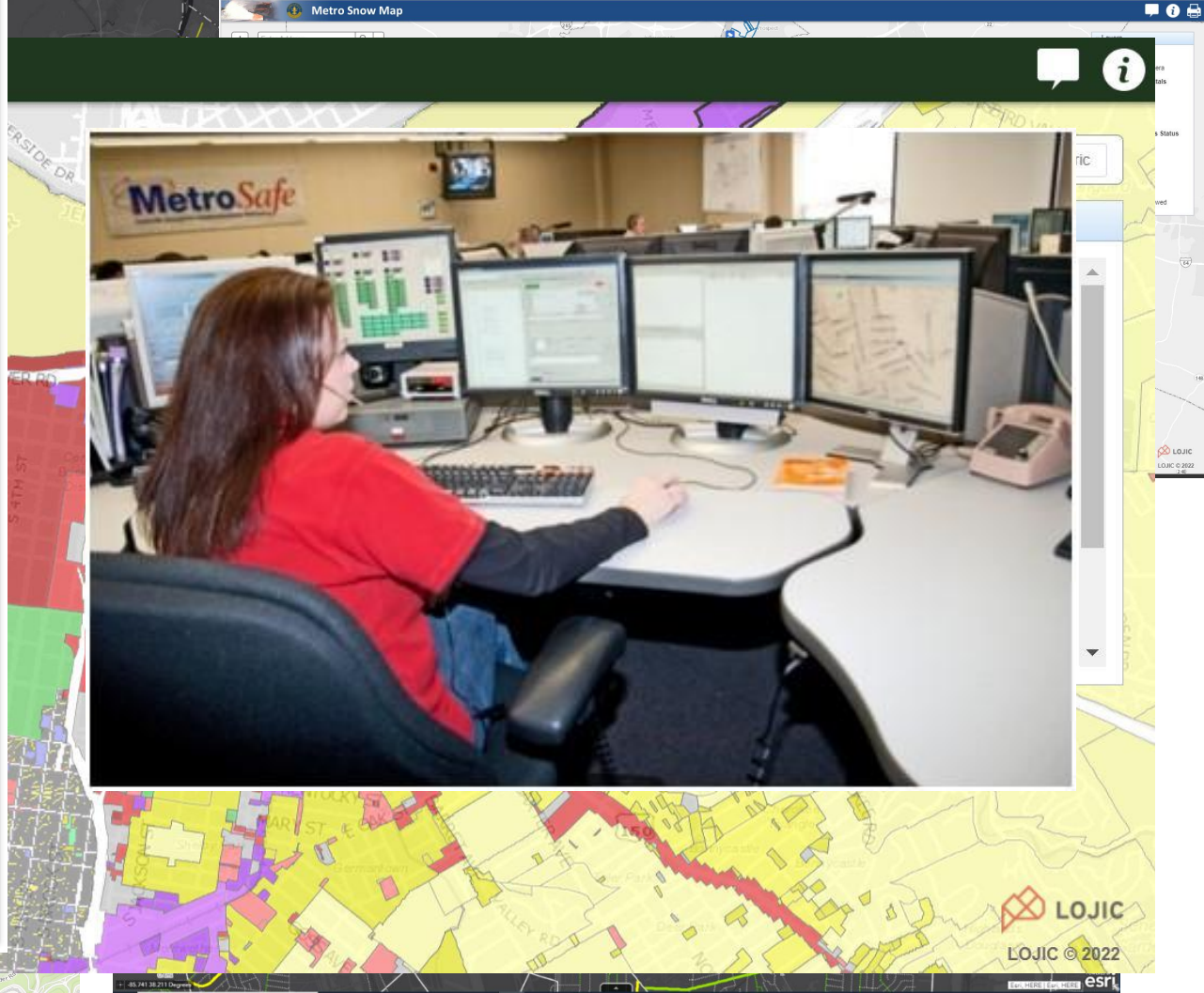
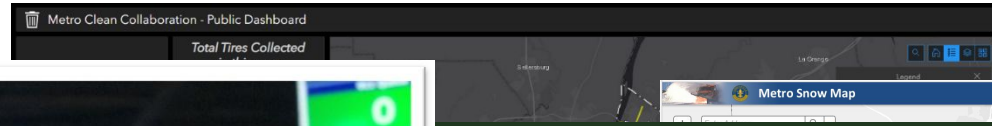
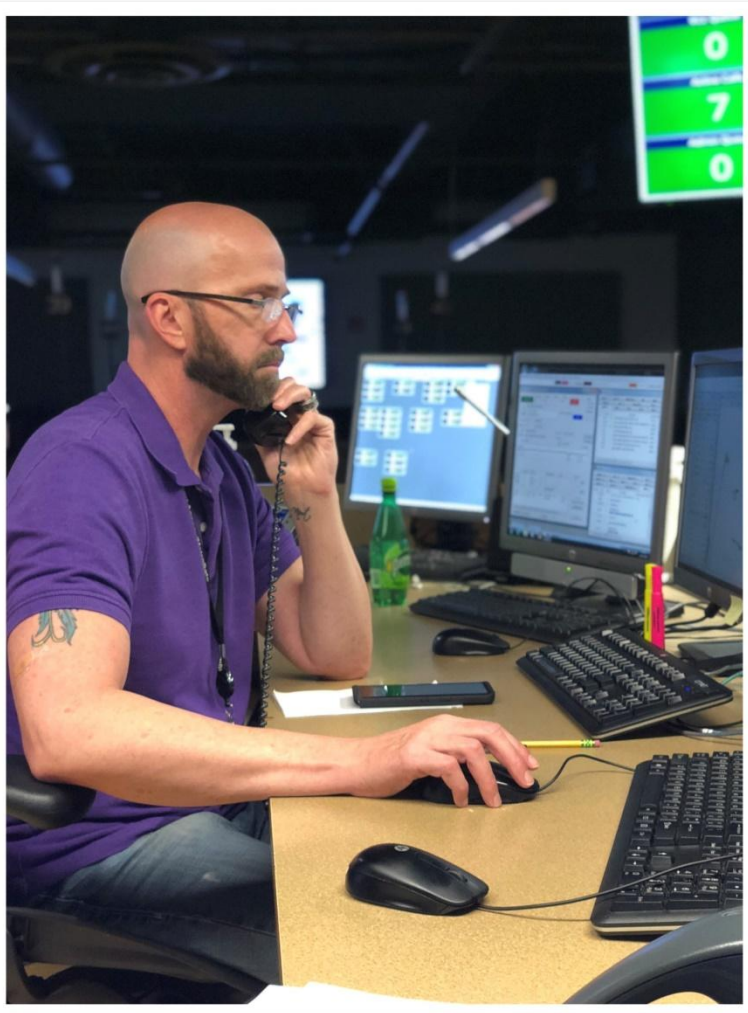
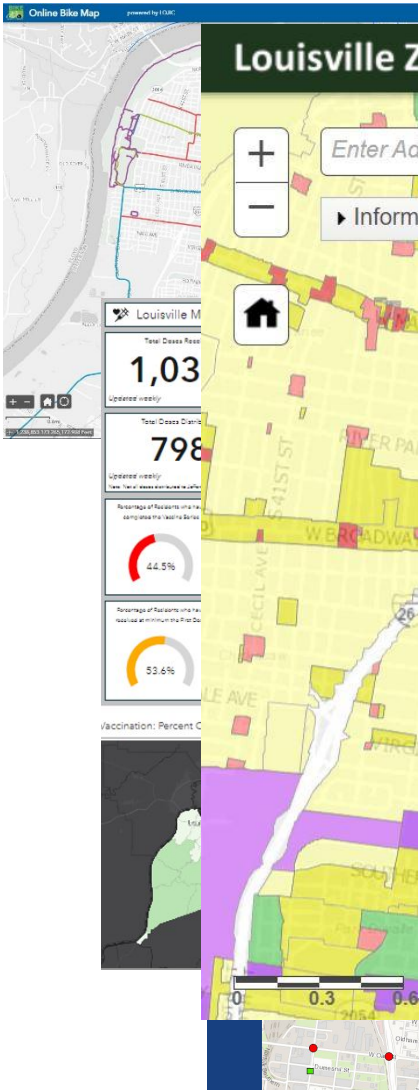


Up to 12.5 inches of rain fell in Louisville Metro from February 28 - March 1, 1997 causing widespread flooding, especially in the southern portions of the county.





LOJIC Metro uses GIS for..





LOJIC

Jefferson County PVA uses GIS for...

Parcel Administrator - Jefferson_PBA

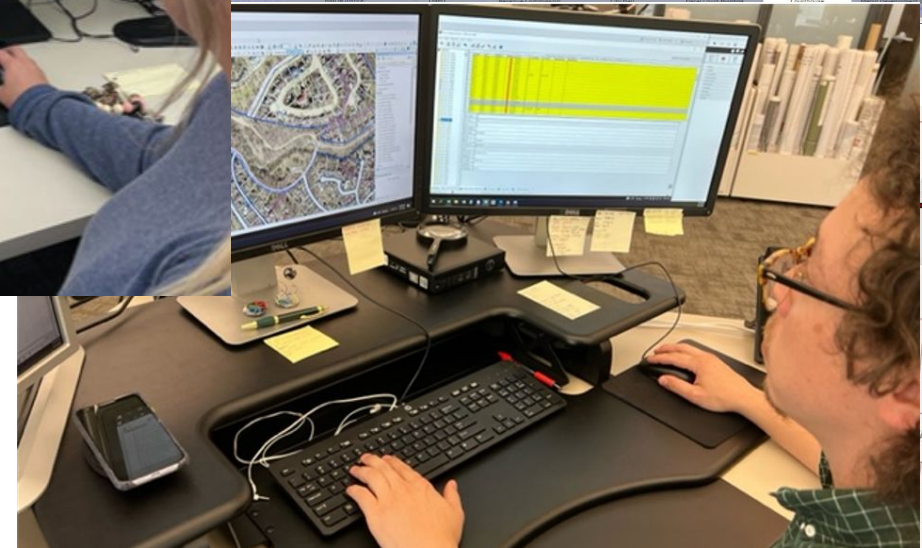
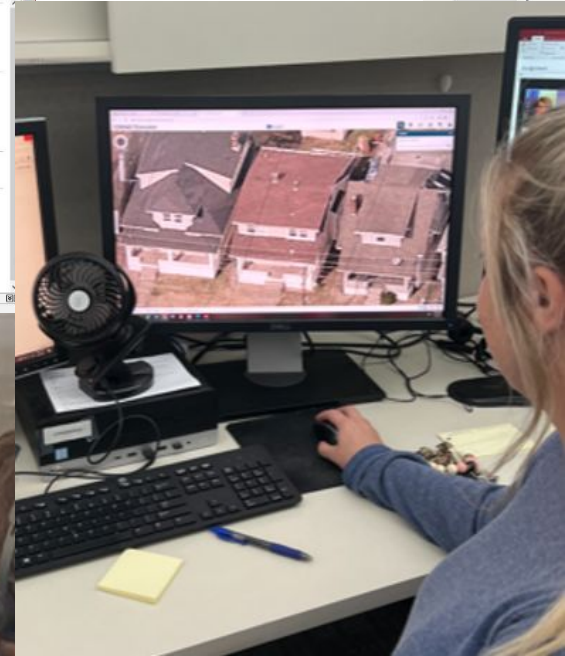
BLOCK	LOT	BLK/LOT	History	LINKS	TRACTS	TOTFRFT	DEEDBOOK	DEEPPAGE
4044								
4046								
4047								
4048								
4049								
4050								
4051								
4052								
4053								
4054								
4055								
4056								
4057								
4058								
4059								

Commercial Land Sales through September 2020

Downtown Government Buildings

Courthouse
527 W. Jefferson Street

City Departments:
Mayor's Office
County Clerk
Deed Unit



Shawnee Today

Shawnee is a neighborhood in West Louisville with approximately 13,000 residents.

Grand homes near Shawnee park along with bungalow and cottage-style houses on tree-lined streets give the area a great deal of charm.





LOJIC MSD uses GIS for...

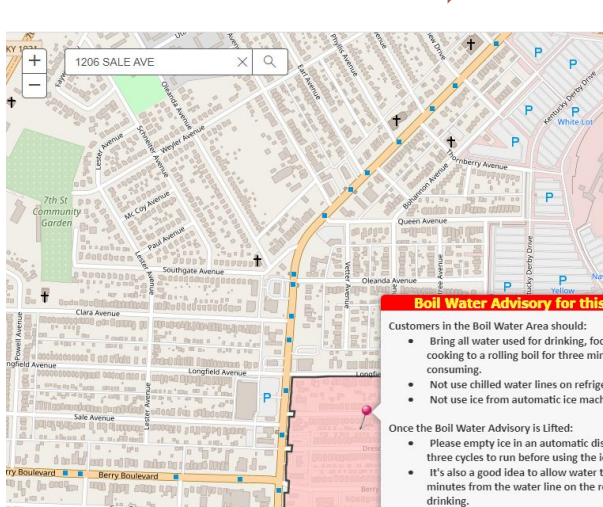
The collage illustrates various GIS applications in water management:

- Community Benefits Dashboard:** A web-based interface showing a map with various colored overlays and a legend on the right.
- MSD Flood Protection System and Major Assets:** A detailed map of a river system with various flood protection structures and assets labeled.
- Workstation:** A woman wearing a headset is seated at a desk with multiple computer monitors displaying GIS data and spreadsheets.
- GIS Map:** A large, colorful GIS map showing terrain, infrastructure, and various data layers.
- Field Work:** A man in a cap and shirt is shown in a field, examining a pipe or structure, likely related to water management.
- Switch Basemap:** A small interface element showing a 'Switch Basemap' button and a thumbnail of a different map view.



LOJIC

LWC uses GIS for...



Water Quality Field Act...

Heat Map

Remark Report

Breaks and Leaks

BoilWaters

Creation Date: 1/1/2019 - 12/31/2020

10

Field Activities

Activity

- ET - Air in Line
- ET - Low Pressure
- ET - Low Pressure - High Priority
- Water Quality - Cross Connection Compliant
- Water Quality Customer Wants General Info
- Water Quality Discolored Water
- Water Quality Event
- Water Quality Illness and Health
- Water Quality Lead Test
- Water Quality Participant of LCR EPA test
- Water Quality Taste and Odor
- Water Quality Turbidity/Cloudy/Particles

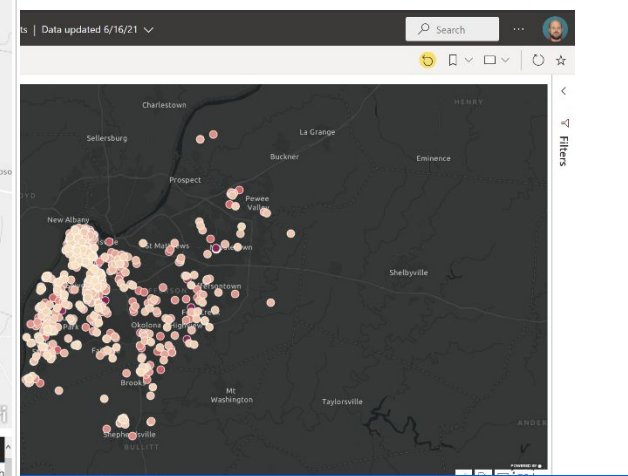
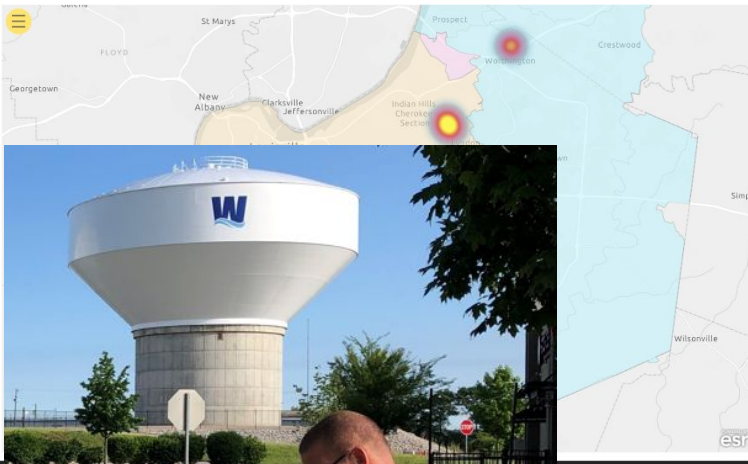
Category

- Customer Related
- LWC Related
- Non-Compliant
- Outside Entity

Status

- C
- P

CRE_DTTM	ENTITY_NAME
8/20/2019 7:22:43 AM	
9/25/2020 12:13:26 PM	
8/13/2019 8:46:51 AM	
4/13/2020 10:07:16 AM	



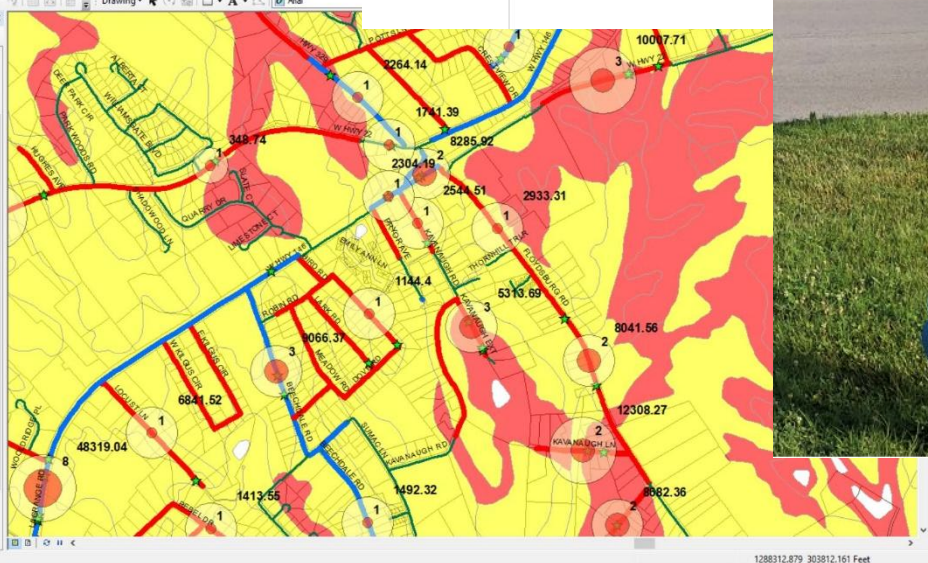
MRPP-2020 - ArcMap

File Edit View Bookmarks Insert Selection Geoprocessing Customize Windows Help

Editor 1:3,407

Table of Contents

- Past MRPPs
- JeffCoPavementConditions
- Mains_w_LeakServiceCount
- MainBreakLeakMerge
- Mains_w_ServiceCount
- LateralLineFittings_Model
- PressurizedMainsDissolve2
- < all other values >
- Pipe_Type**
 - Asbestos Cement
 - Cement Lined Delavaud Cast
 - Cement Lined Sand Cast Iron
 - Cleaned and Cement Lined
 - Undesignated Cast Iron
 - Unlined Delavaud Centrifig
 - Unlined Sand Cast Iron
- Breaks-Leaks
- Centerlines
- JeffCoCenterlines
- OldhamCoCenterlines
- BullittCoCenterlines
- Soils
- JeffCoSoils
- OldhamCoSoils
- CORR_STL
- MODERATE
- LOW
- NA
- BullittShelbyCoSoils
- LWC AMPM
- Jefferson Co Info
- Oldham Co Info



structure Network

BRIDLE GATE DR. 8" PVC

VALVE ISOLATION

Values Mains Services Hydrants Customers

Export: [Icons]

Facility ID	Valve Key	Size	SubHypo Code	Turns	Type	V. M
SV000004143	G14191801	8	1	26	G	U S PIP
SV000006396	G14192001	8	1	26	G	U S PIP

Showing 1 to 2 of 2 entries

Previous 1 Next

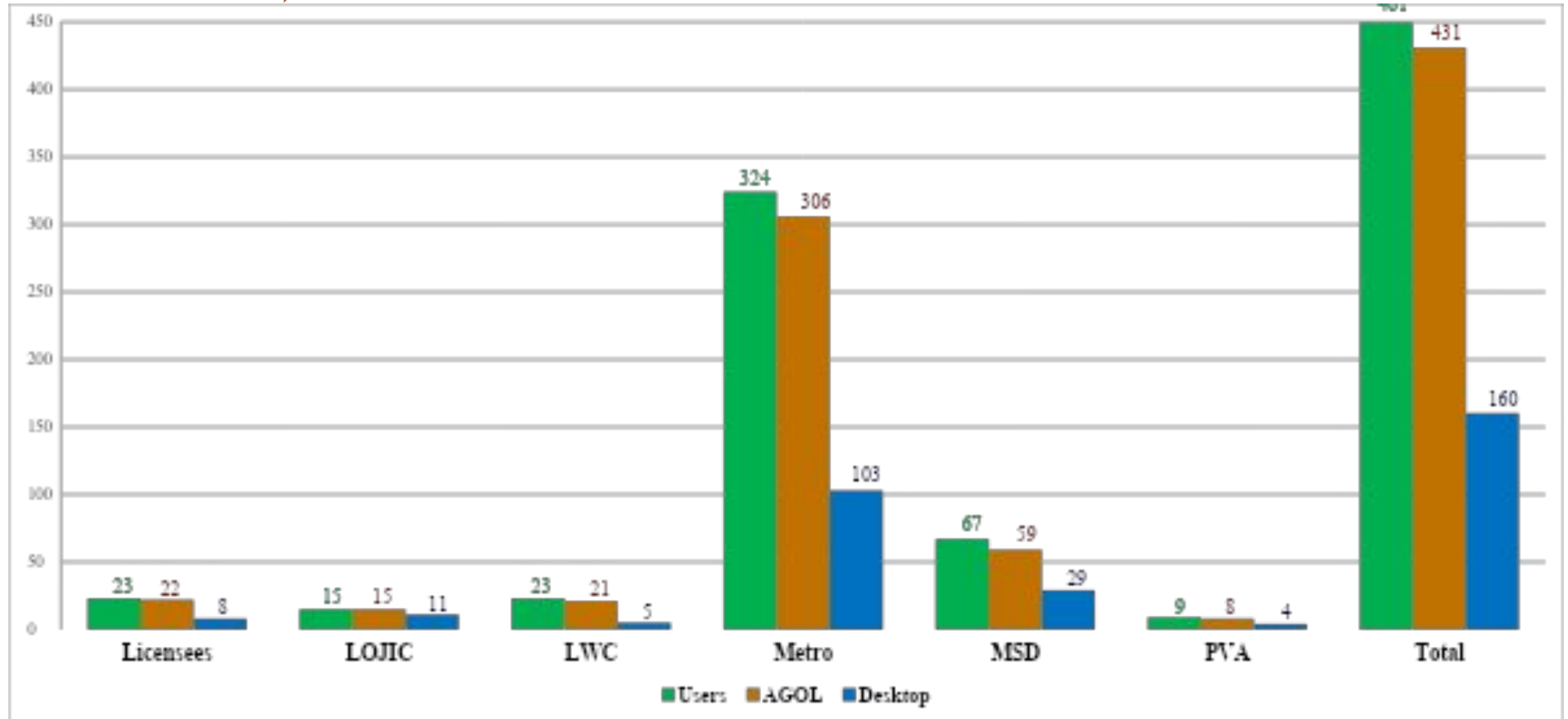
Clear

Map Scale: 1:1200

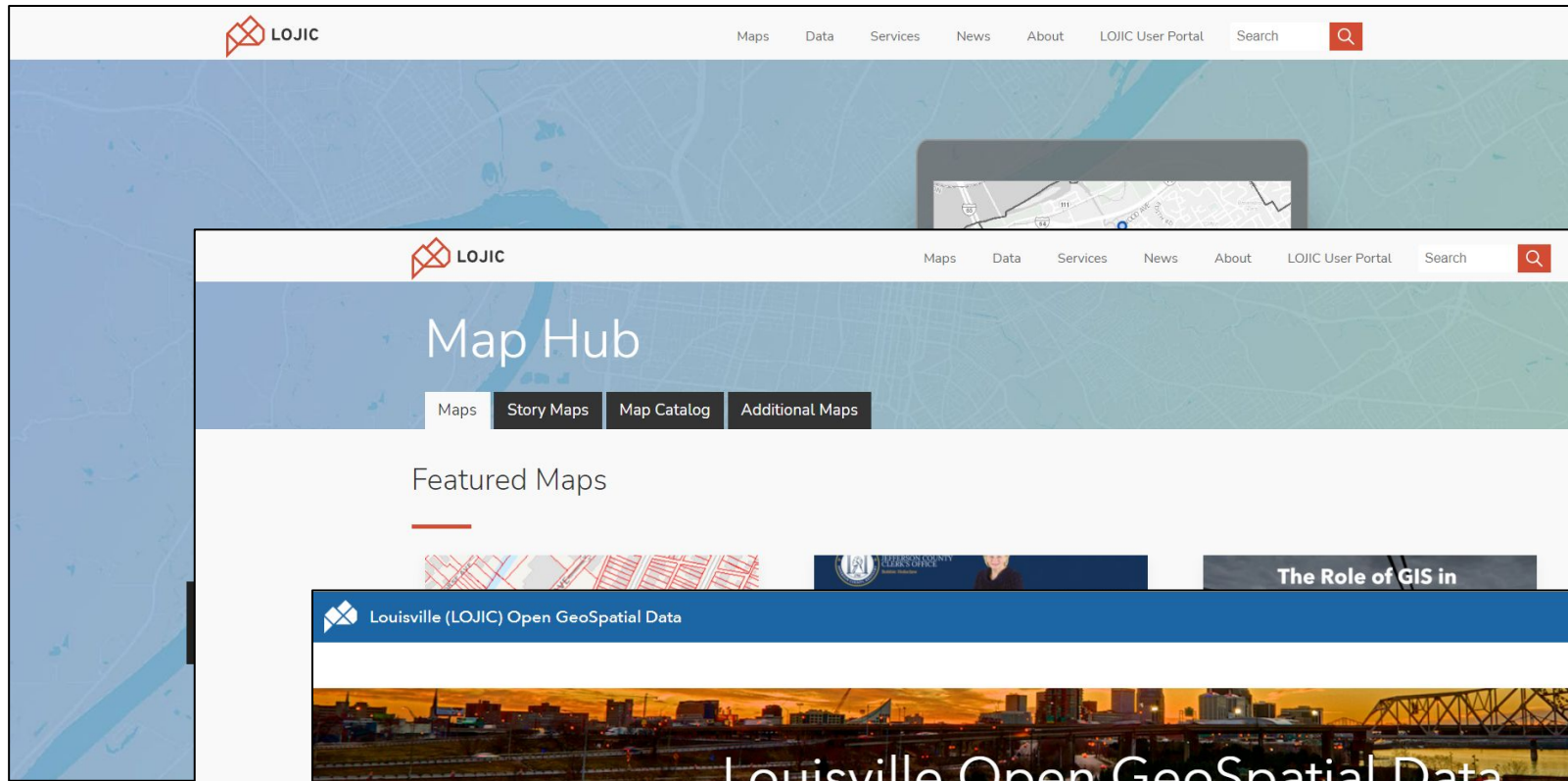


LOJIC

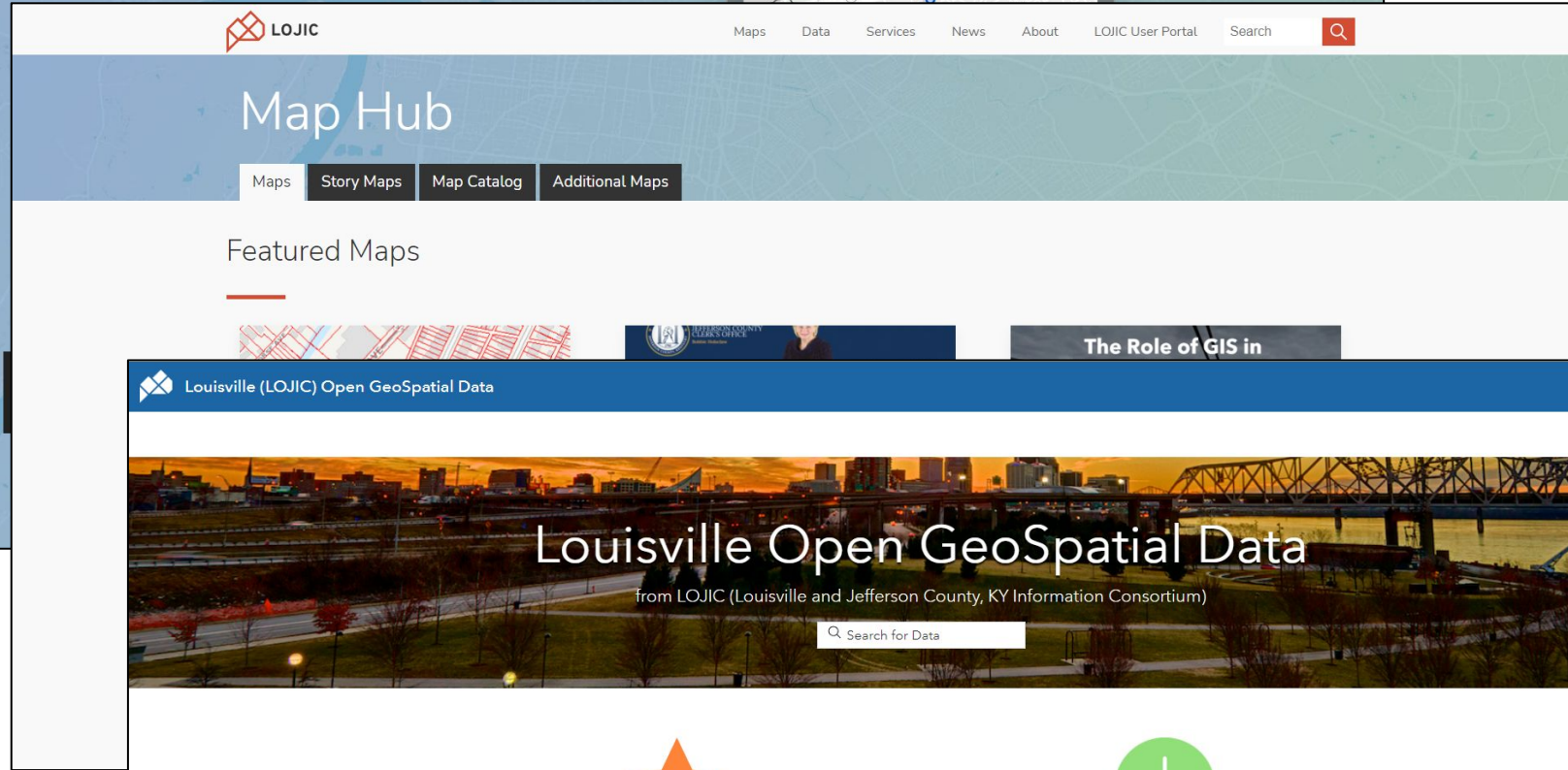
User Community



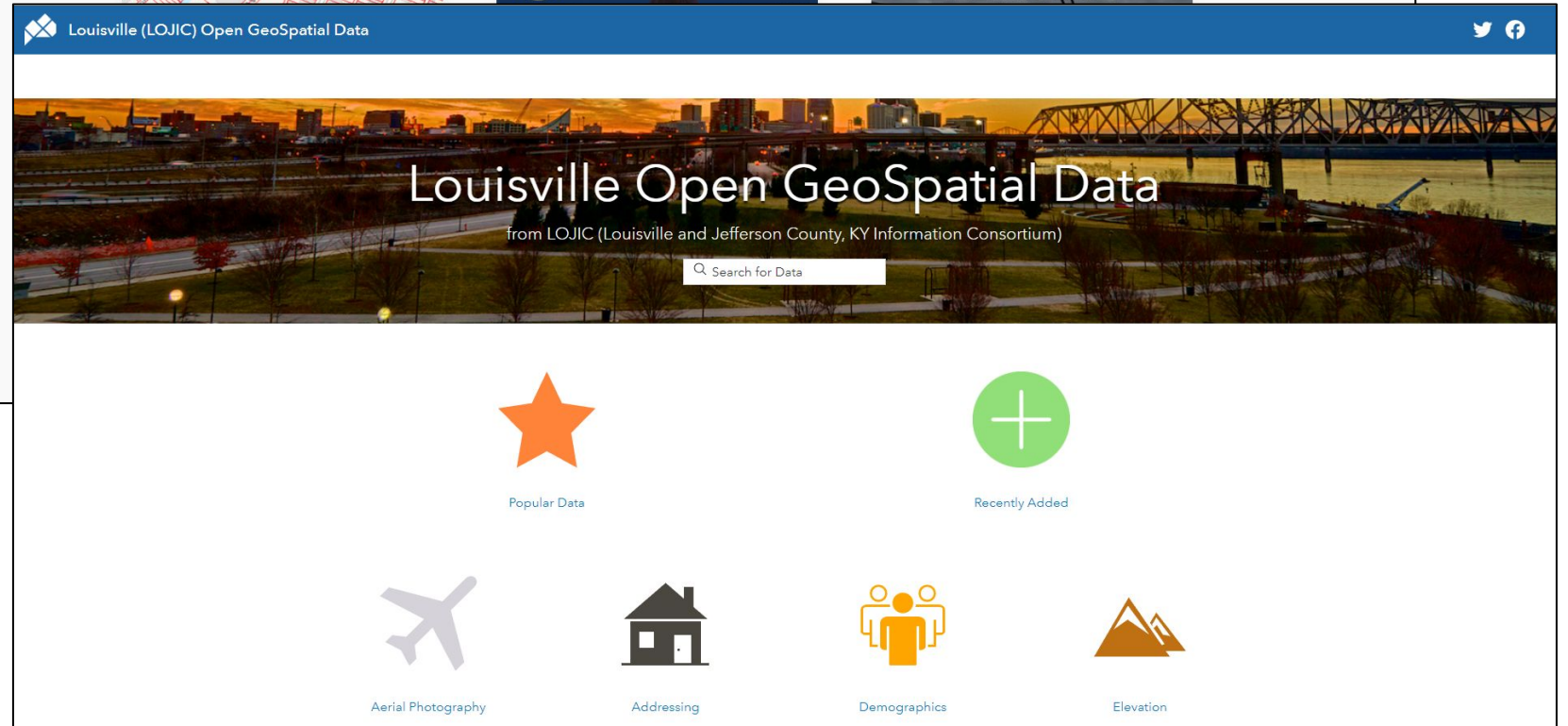
LOJIC.org



Map Hub



Open Data Portal





LOJIC



**Thanks for listening.
Questions?**

**Curt Bynum, GISP
LOJIC Director
curt.bynum@lojic.org**