

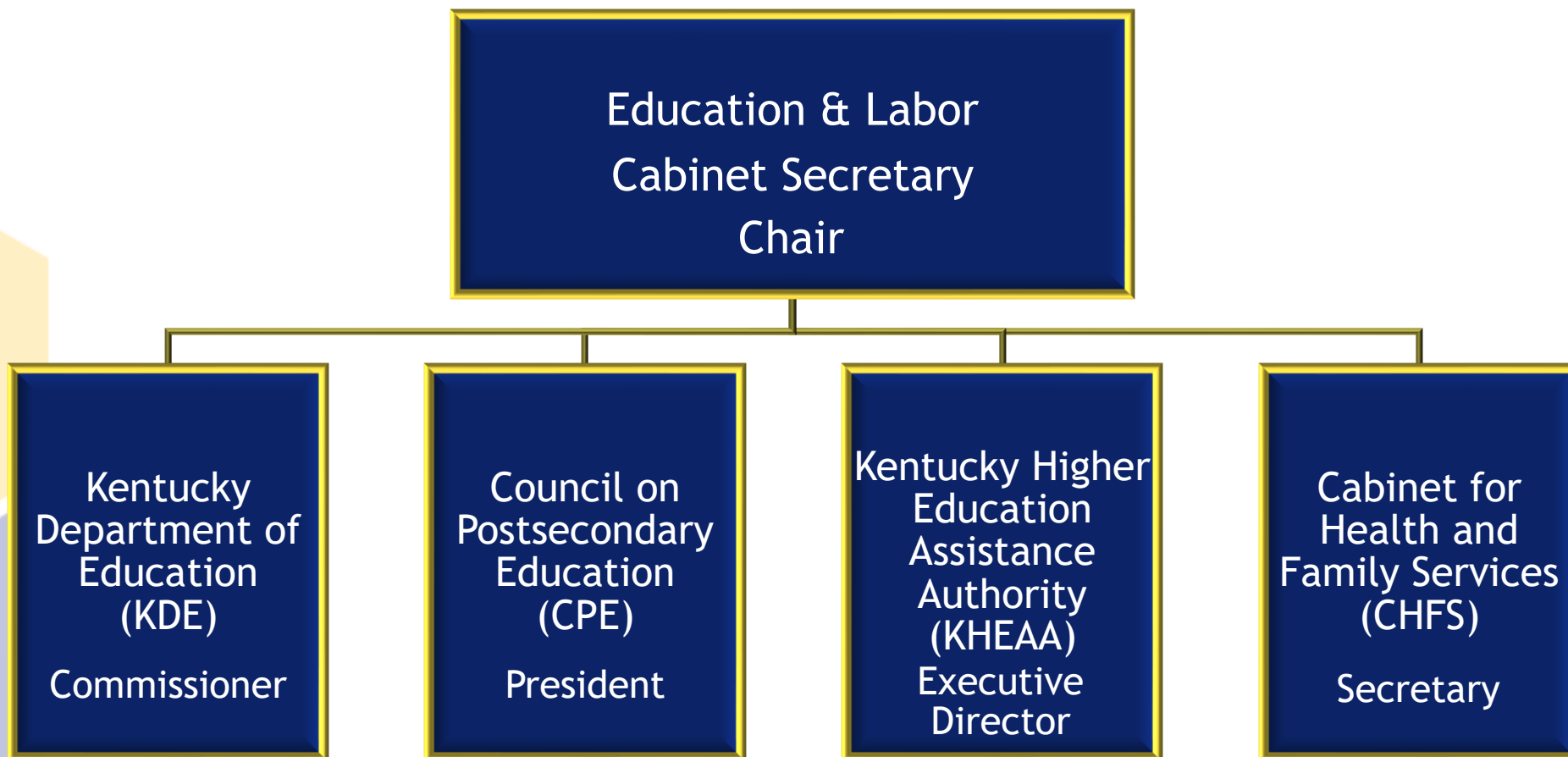
Kentucky Center for Statistics

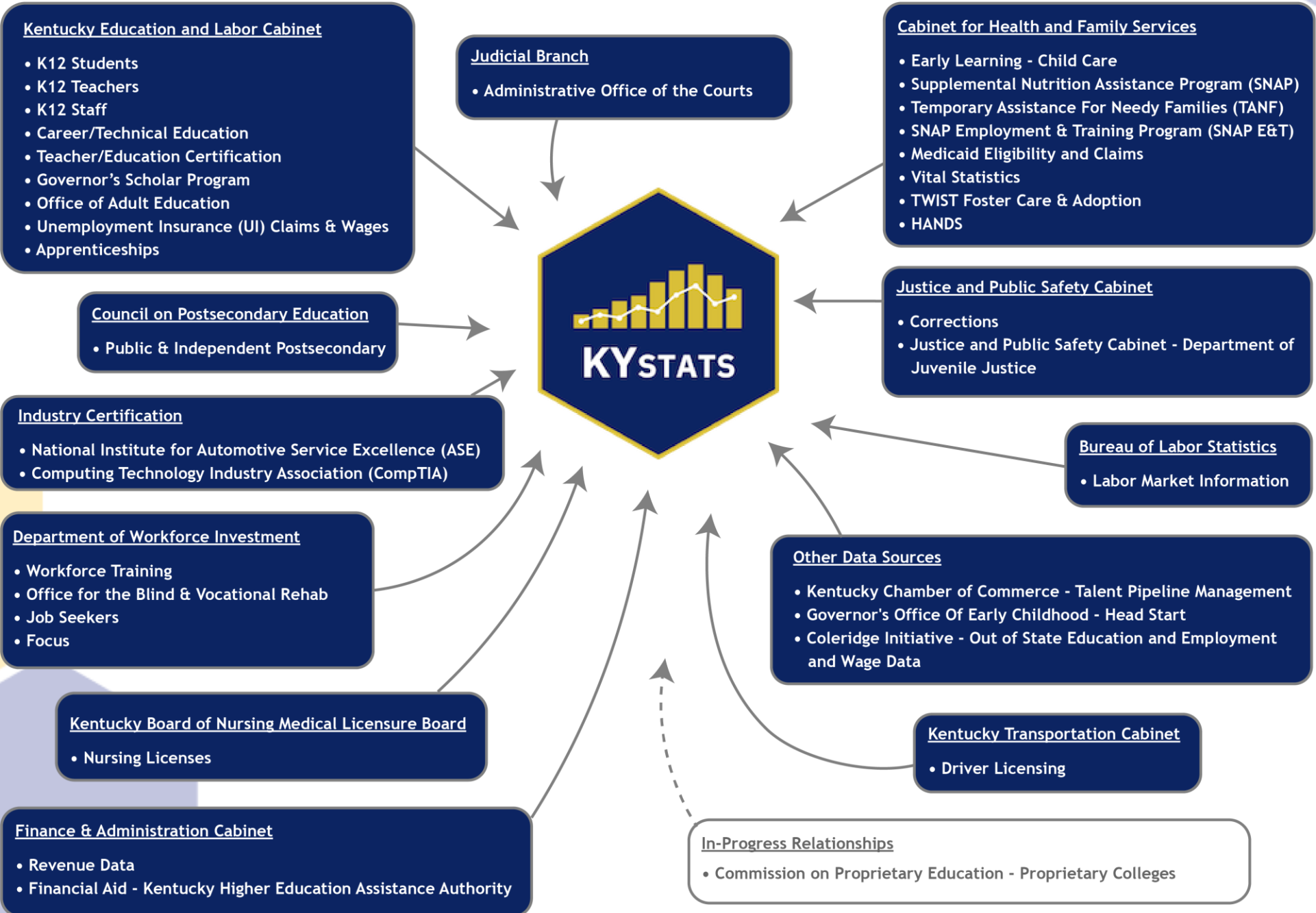


Uniting our data.
Informing our Commonwealth.



KYSTATS GOVERNING BOARD





DATA DE-IDENTIFICATION

Data Submission

- K-12
- Career Tech Ed.
- Teacher Licensure
- Adult Ed.
- UI Claims & Wages
- Apprenticeships
- Postsecondary
- Workforce Training
- Revenue
- Financial Aid
- Early Childhood
- SNAP/TANF
- SNAP E&T
- Vital Statistics
- Corrections
- Labor Market Info

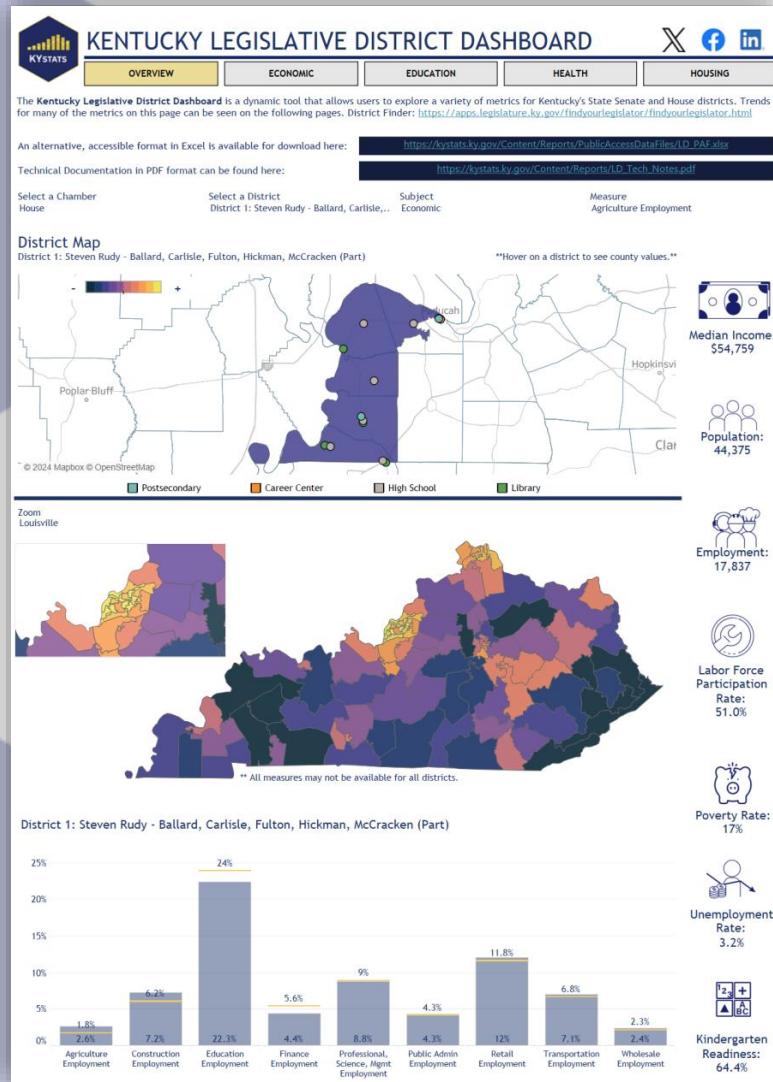
Kentucky SLDS



Data Uses

- Reports
- Analyses
- Evaluations
- Data Requests
- What Ifs
- Matched Comparisons

KENTUCKY LEGISLATIVE DISTRICT DASHBOARD



Scan the QR code to view this report



<https://kystats.ky.gov/Latest/LD>

LEGISLATIVE DISTRICT DASHBOARD

This interactive report displays data for legislative districts. Users are able to compare legislative districts and counties. Trends are displayed for many metrics for legislative districts.

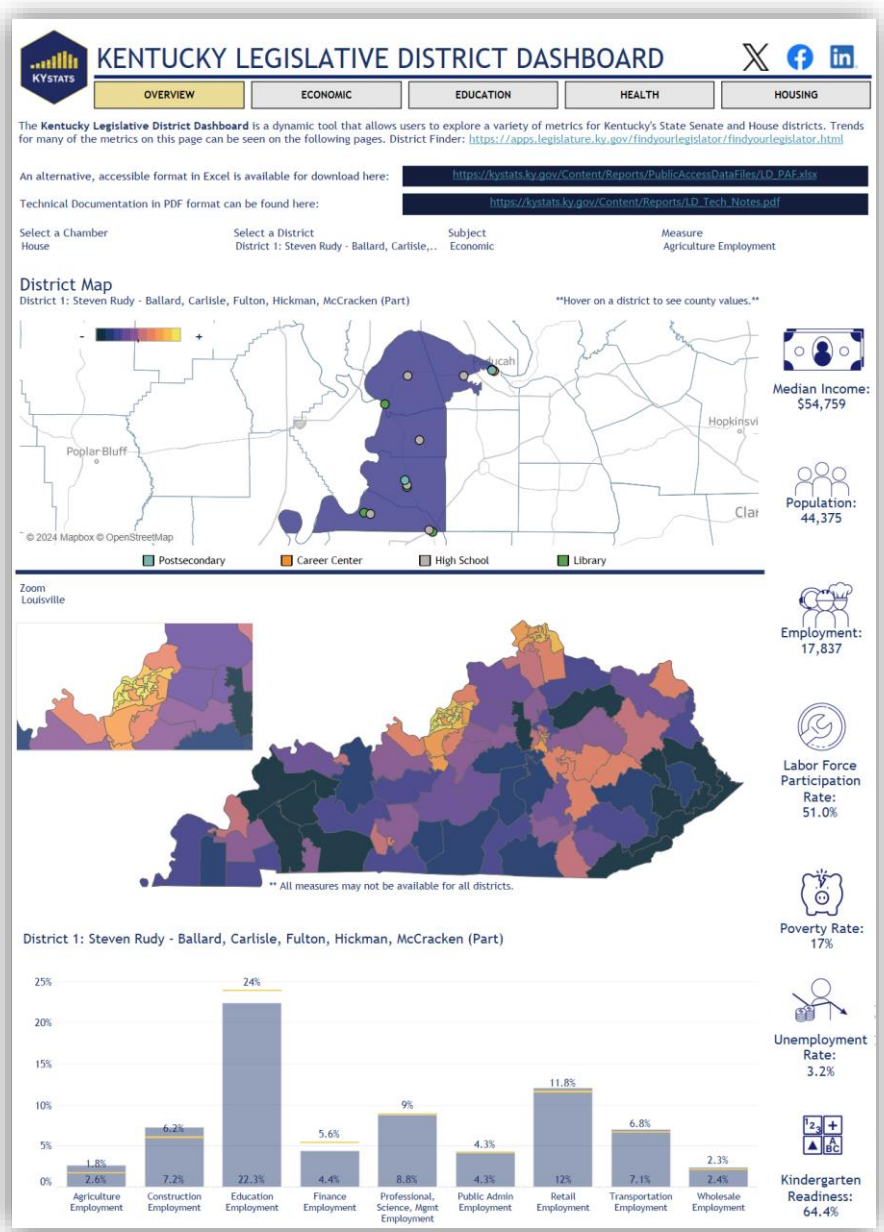
Topics covered include:

ECONOMIC

EDUCATION

HEALTH

HOUSING



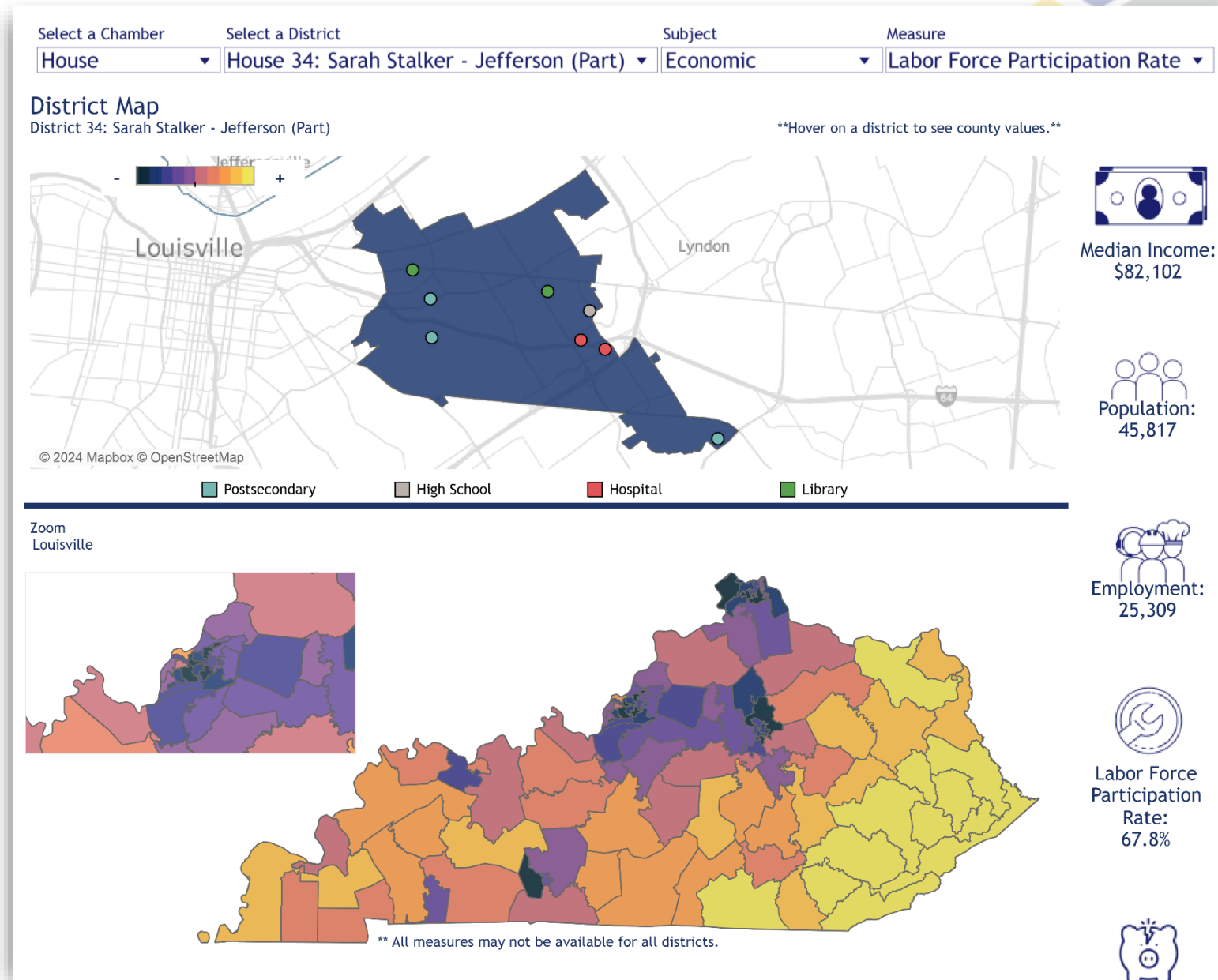
LEGISLATIVE DISTRICT DASHBOARD - OVERVIEW

Overview - District Map

The first section of the Overview page contains district maps for both the House and Senate with numerous metrics for each of the four subjects; **Economic, Education, Housing, and Health.**

Filters include:

- Chamber
- District
- Subject
- Measure

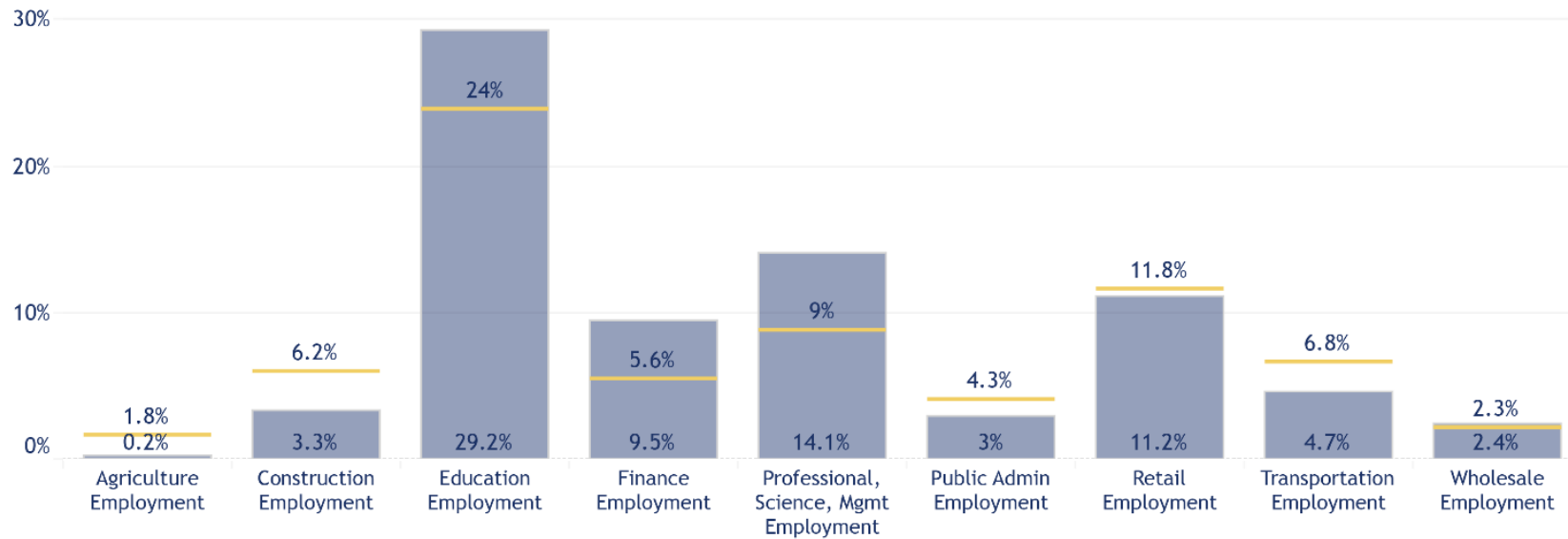


LEGISLATIVE DISTRICT DASHBOARD - OVERVIEW

Overview - Bar Chart

The second section of the Overview page contains a bar chart for each district of both the House and Senate which can be filtered by the four subjects; Economic, Education, Housing, and Health.

District 34: Sarah Stalker - Jefferson (Part)



Median Income:
\$82,102



Population:
45,817



Employment:
25,309



Labor Force
Participation
Rate:
67.8%



Poverty Rate:
7%



Unemployment
Rate:
3.7%



Kindergarten
Readiness:
61.5%

Additional call out metrics to the right of the page include:

- Median Income
- Population
- Employment
- Labor Force Participation Rate
- Poverty Rate
- Unemployment Rate
- Kindergarten Readiness

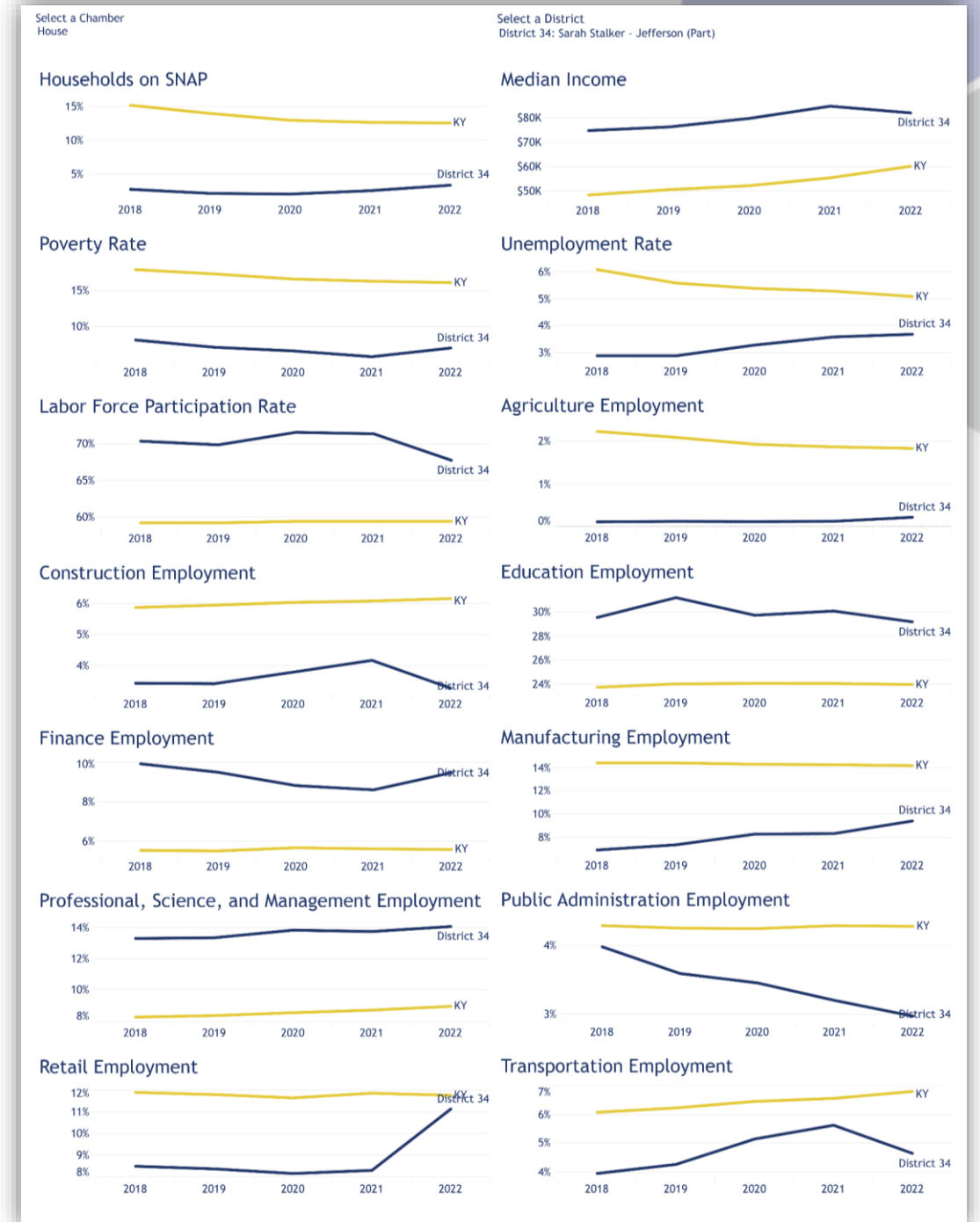
LEGISLATIVE DISTRICT DASHBOARD - ECONOMIC

Economic - Trends

This page displays historical trends for economic measures for each district for both the House and Senate and the Commonwealth average for comparison.

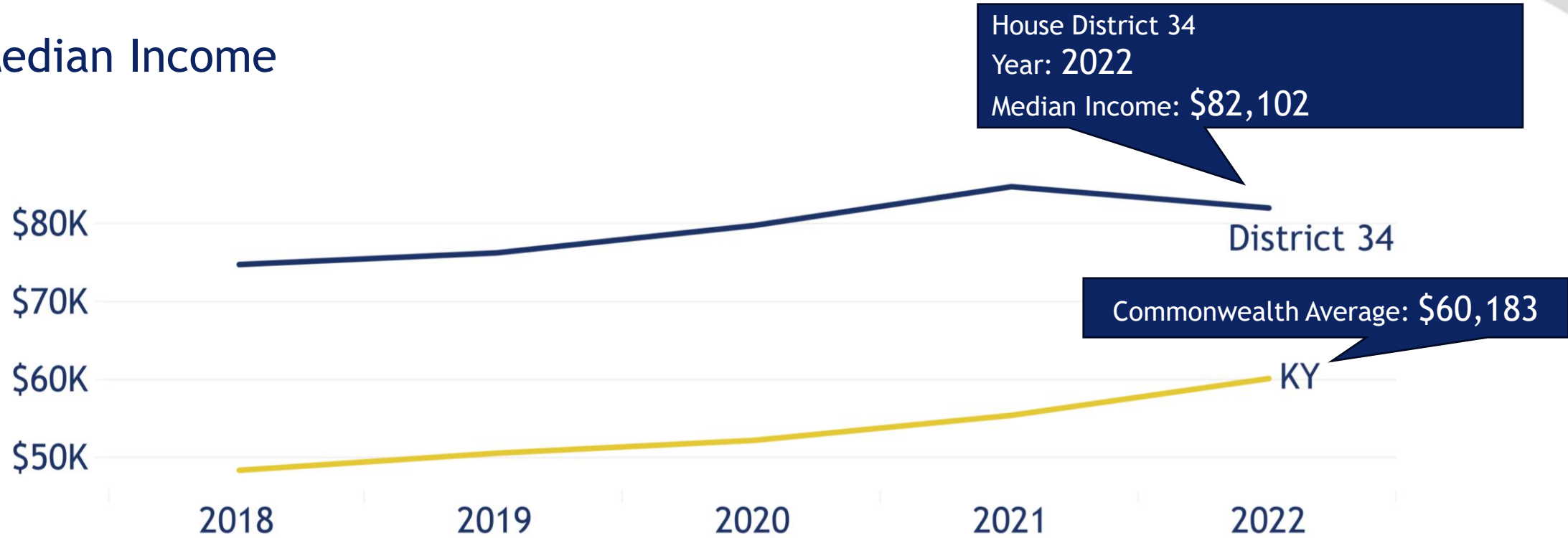
Measures include:

- Households on SNAP
- Median Income
- Poverty Rate
- Unemployment Rate
- Labor Force Participation Rate
- Agriculture Employment
- Construction Employment
- Education Employment
- Finance Employment
- Finance Employment
- Manufacturing Employment
- Professional, Science, & Management Employment
- Public Administration Employment
- Retail Employment
- Transportation Employment



LEGISLATIVE DISTRICT DASHBOARD ECONOMIC

Median Income



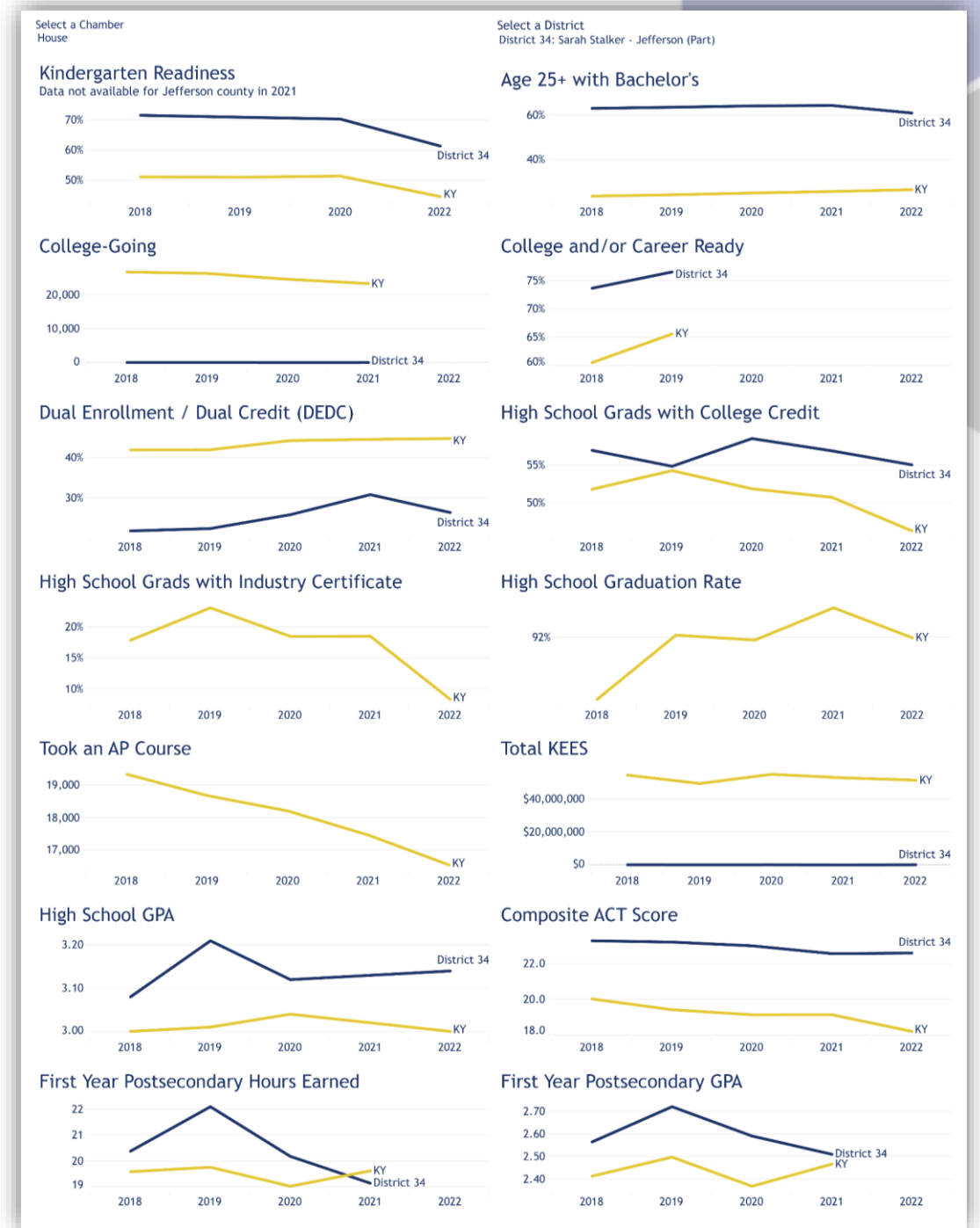
LEGISLATIVE DISTRICT DASHBOARD - EDUCATION

Education - Trends

This page displays historical trends for economic measures for each district for both the House and Senate and the Commonwealth average for comparison.

Measures include:

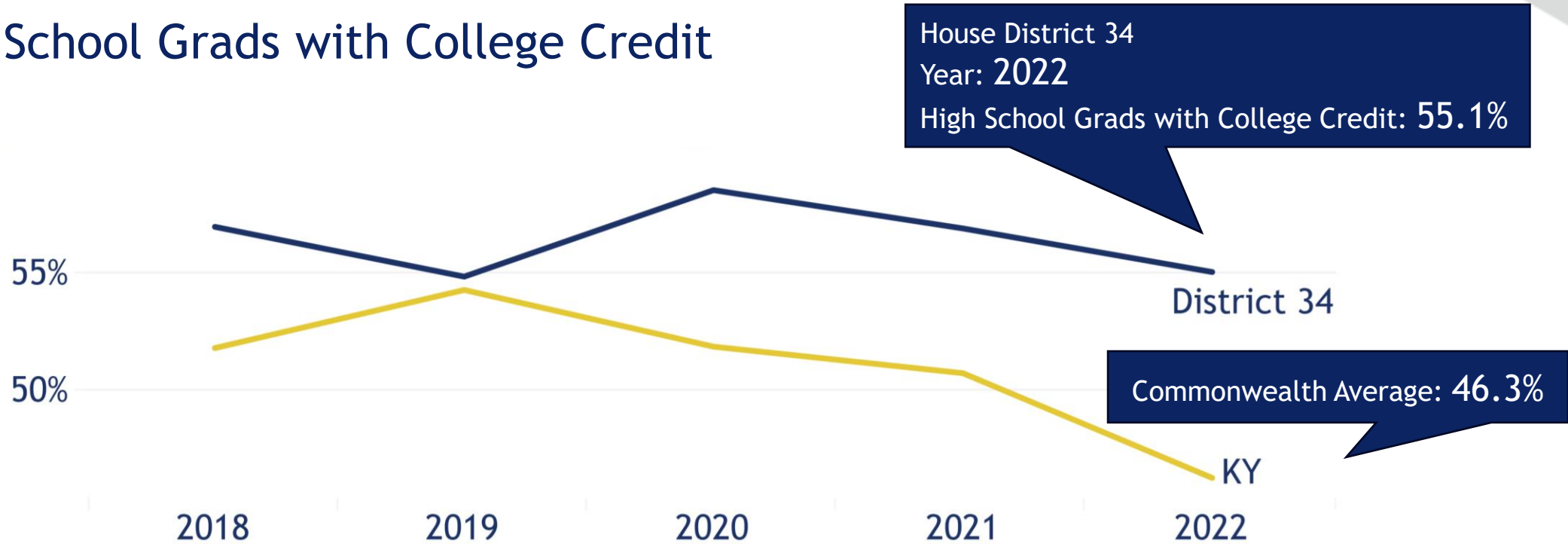
- **Kindergarten Readiness**
- **Age 25+ with Bachelor's**
- **College-Going**
- **College or Career Ready**
- **Dual Enrollment/Dual Credit (DEDC)**
- **High School Grads with College Credit**
- **High School Grads with Industry Certificate**
- **High School Graduation Rate**
- **Took an AP Course**
- **Total KEES**
- **High School GPA**
- **Composite ACT Score**
- **1st Yr Postsecondary Hours Earned**
- **1st Yr Postsecondary GPA**



LEGISLATIVE DISTRICT DASHBOARD

EDUCATION

High School Grads with College Credit



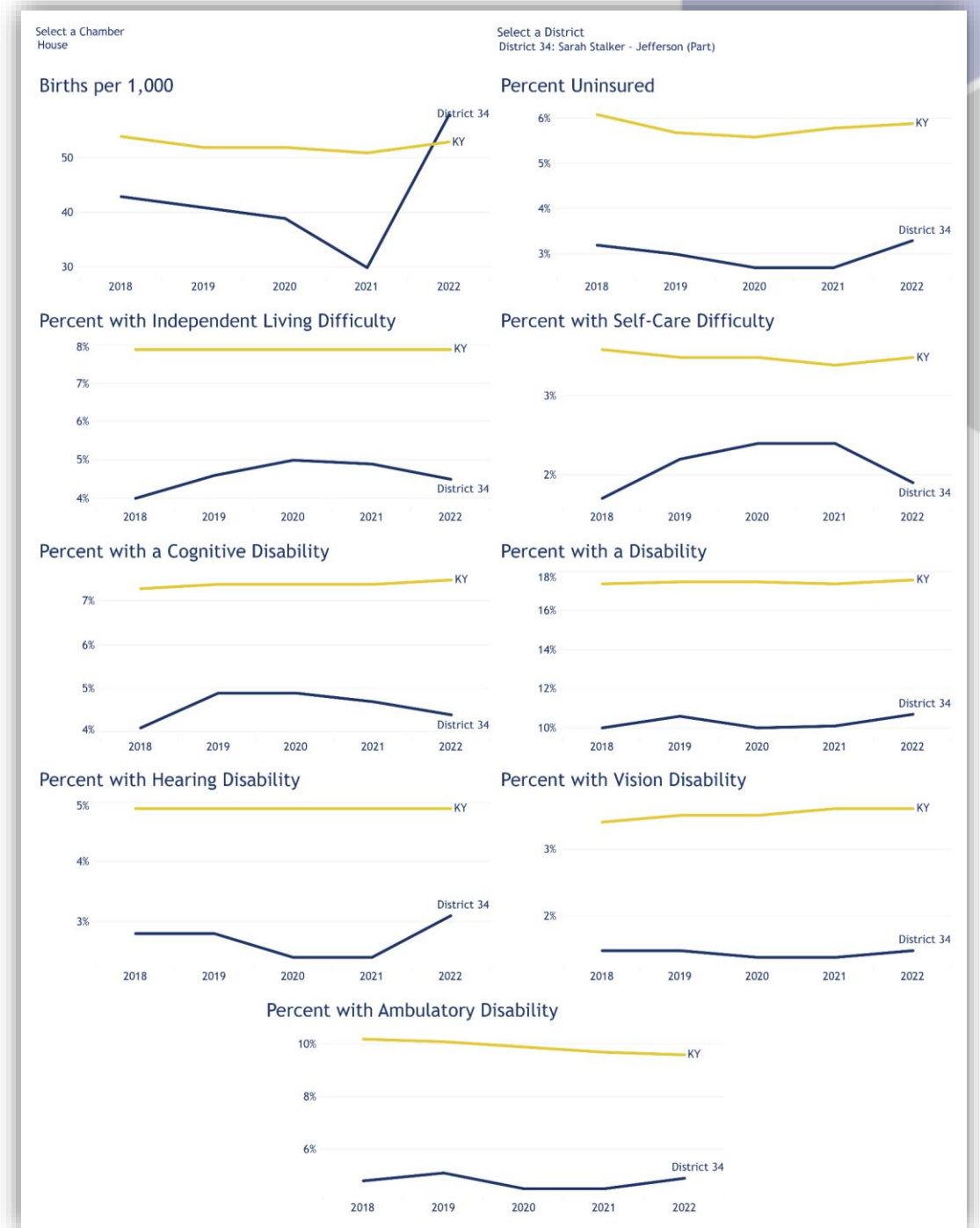
LEGISLATIVE DISTRICT DASHBOARD - HEALTH

Health - Trends

This page displays historical trends for economic measures for each district for both the House and Senate and the Commonwealth average for comparison.

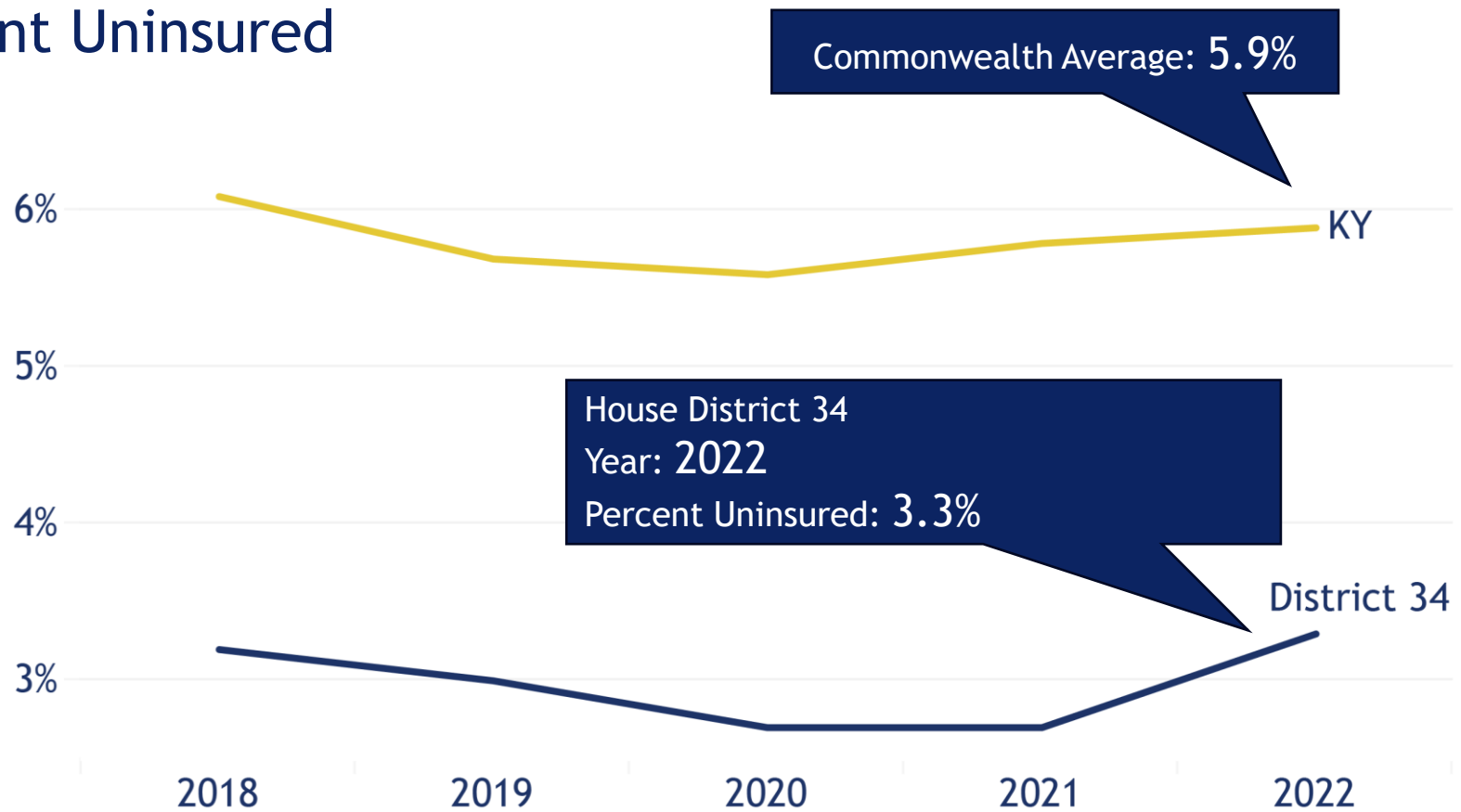
Measures include:

- Births per 1,000
- Percent Uninsured
- Percent with Independent Living Difficulty
- Percent with Self-Care Difficulty
- Percent with a Cognitive Disability
- Percent with a Disability
- Percent with a Hearing Disability
- Percent with a Vision Disability
- Percent with an Ambulatory Disability
- Percent with a Disability
- Percent with a Hearing Disability
- Percent with a Vision Disability
- Percent with an Ambulatory Disability



LEGISLATIVE DISTRICT DASHBOARD HEALTH

Percent Uninsured



LEGISLATIVE DISTRICT DASHBOARD - HOUSING

Housing - Trends

This page displays historical trends for economic measures for each district for both the House and Senate and the Commonwealth average for comparison.

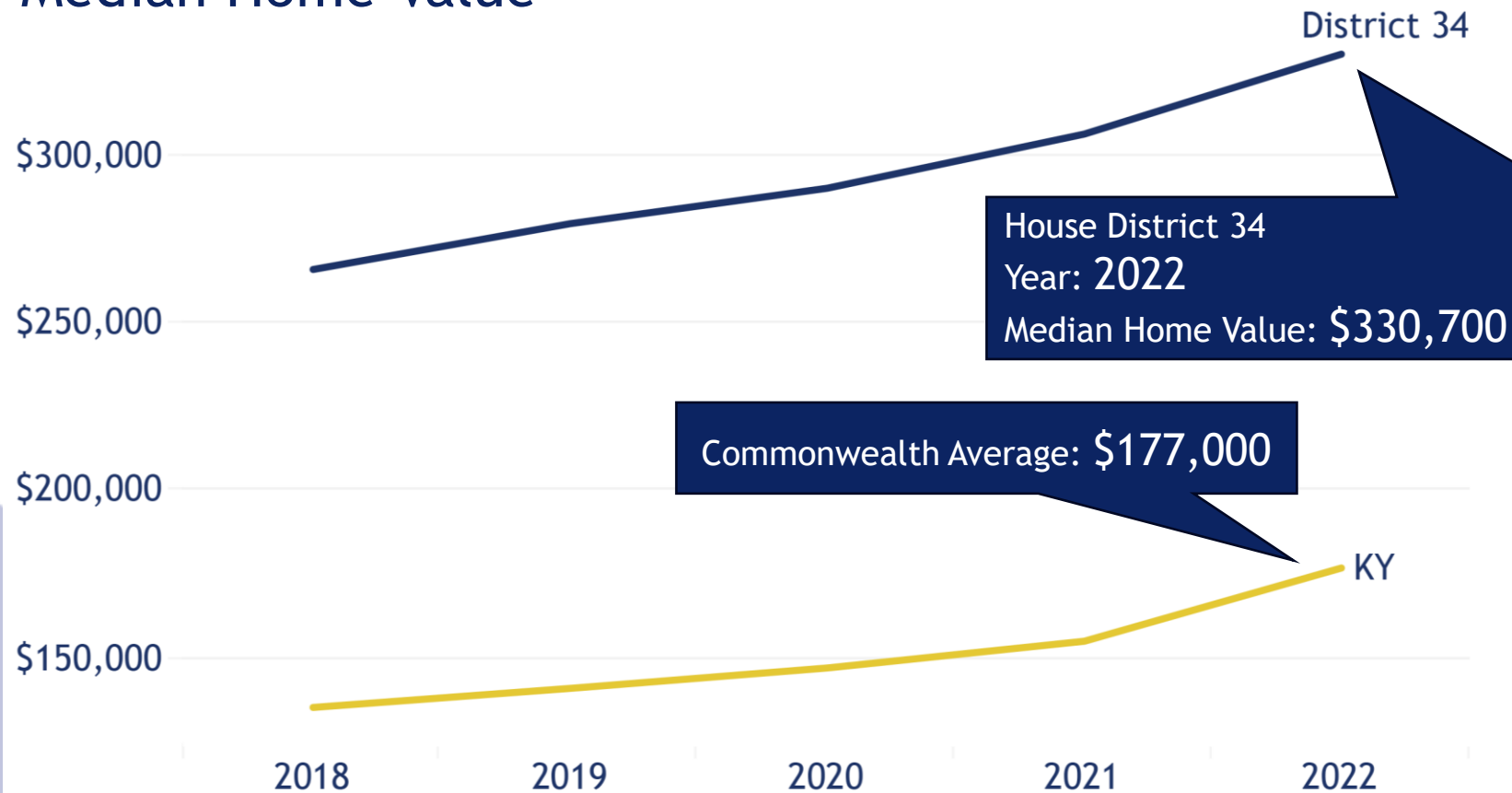
Measures include:

- Median Rent
- Median Home Value
- Median Housing Cost/: Units with a Mortgage
- Median Housing Cost/Month: Units with no Mortgage
- Owner Units
- Rental Units
- Vacant Units
- Percent with Internet

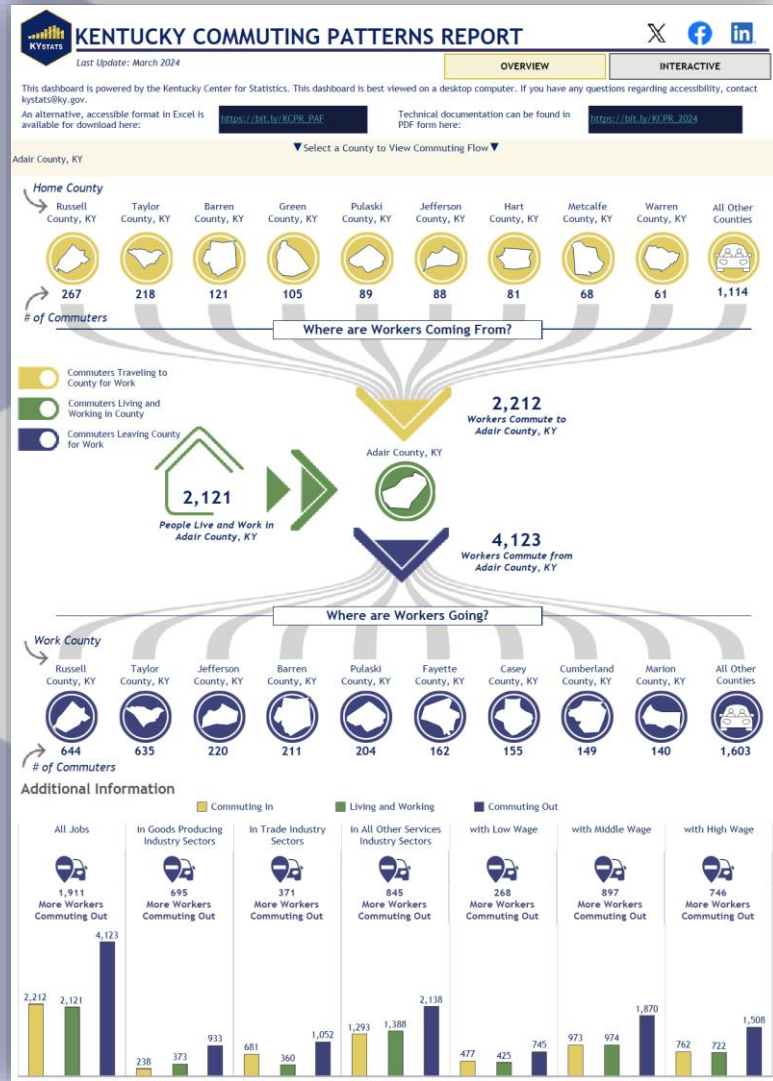


LEGISLATIVE DISTRICT DASHBOARD HOUSING

Median Home Value



KENTUCKY COMMUTING PATTERNS REPORT



Scan the QR code to view this report

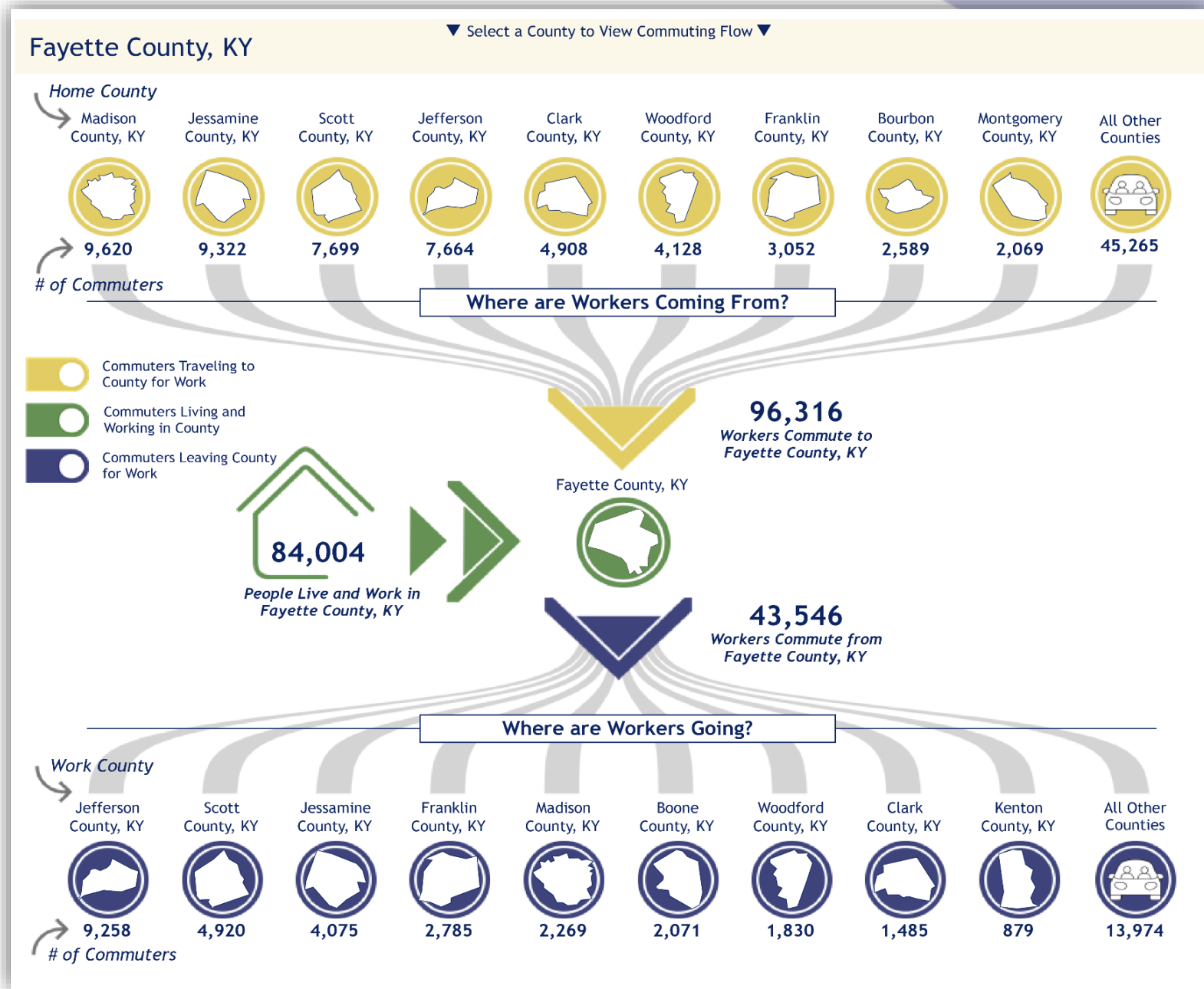


<https://kystats.ky.gov/Latest/KCPR>

COMMUTING PATTERNS

County: Fayette

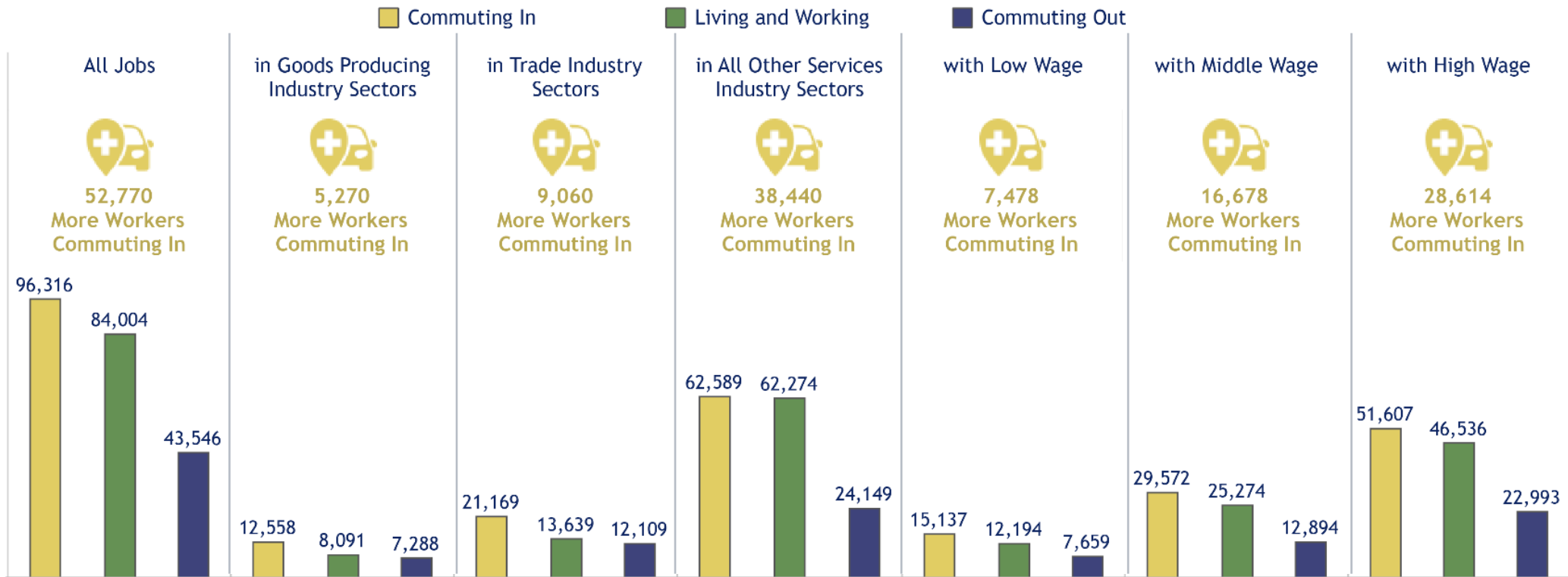
- ➔ 96,316 workers commute to Fayette Co
- ➔ 84,004 workers live & work in Fayette Co
- ➔ 43,546 workers commute from Fayette Co



COMMUTING PATTERNS

County: Fayette

Additional Information



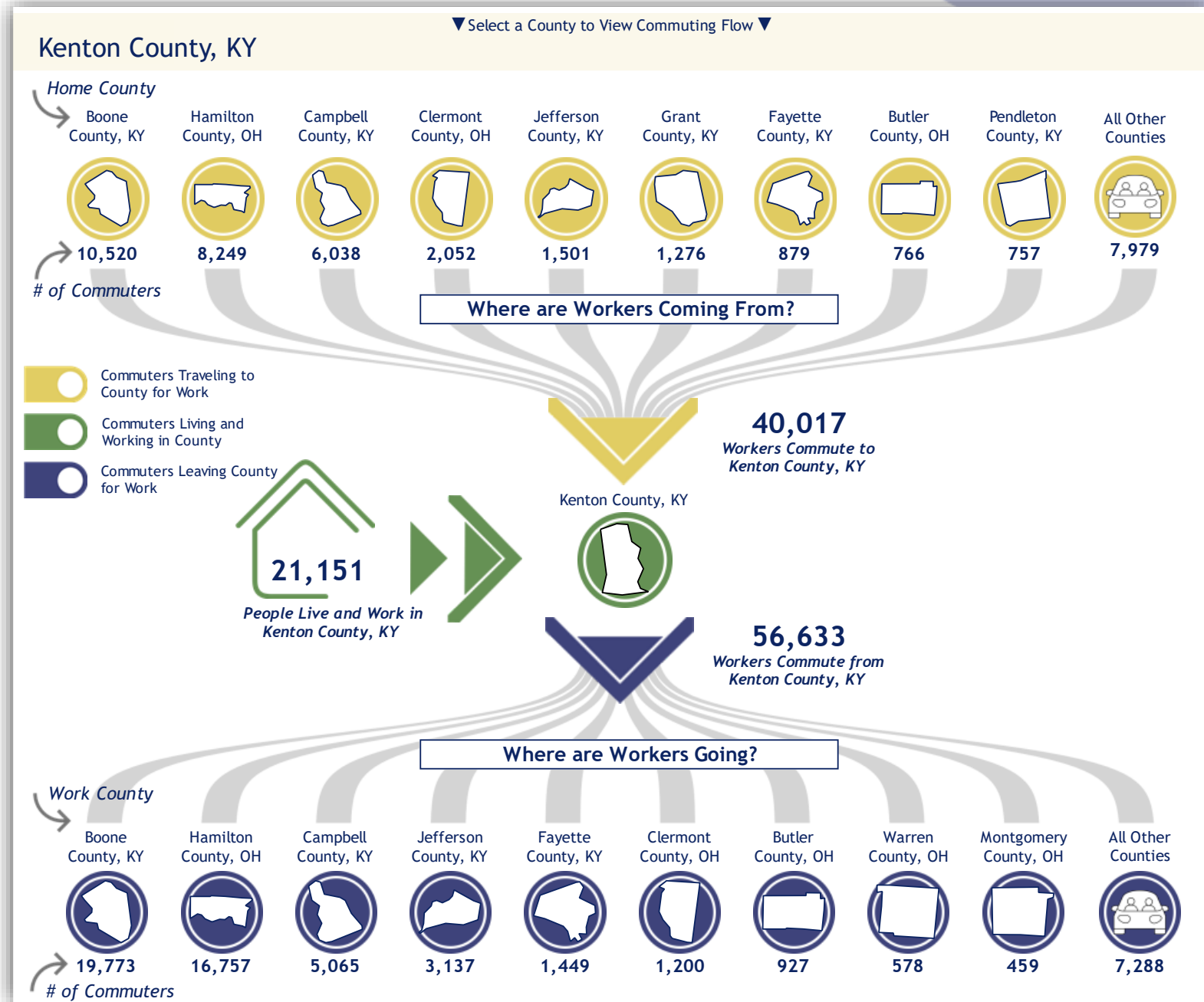
COMMUTING PATTERNS

County: Kenton

➔ 40,017 workers commute to Kenton Co

➔ 21,151 workers live & work in Kenton Co

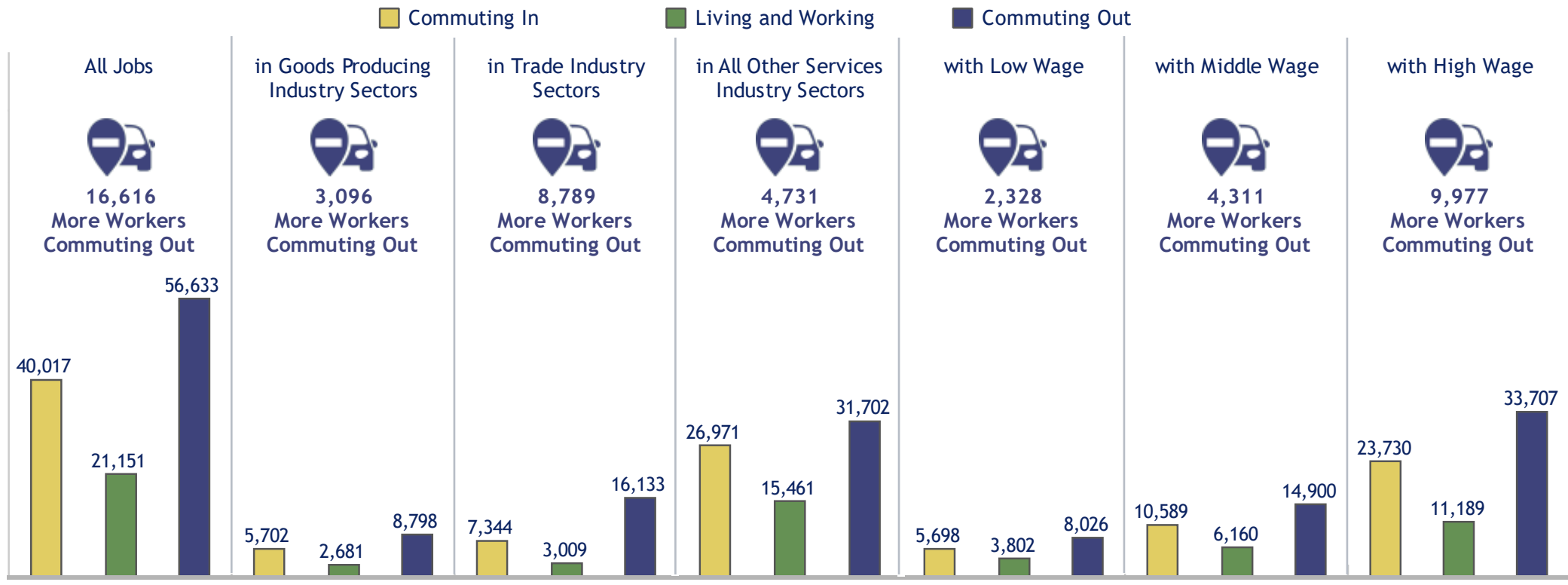
➔ 56,633 workers commute from Kenton Co



COMMUTING PATTERNS

County: Kenton

Additional Information



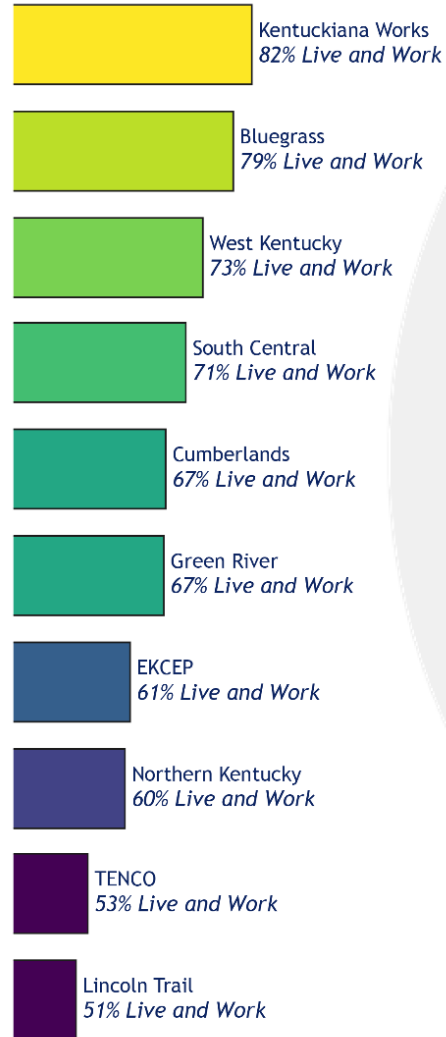
COMMUTING PATTERNS

➔ 127,550 workers live in Fayette county

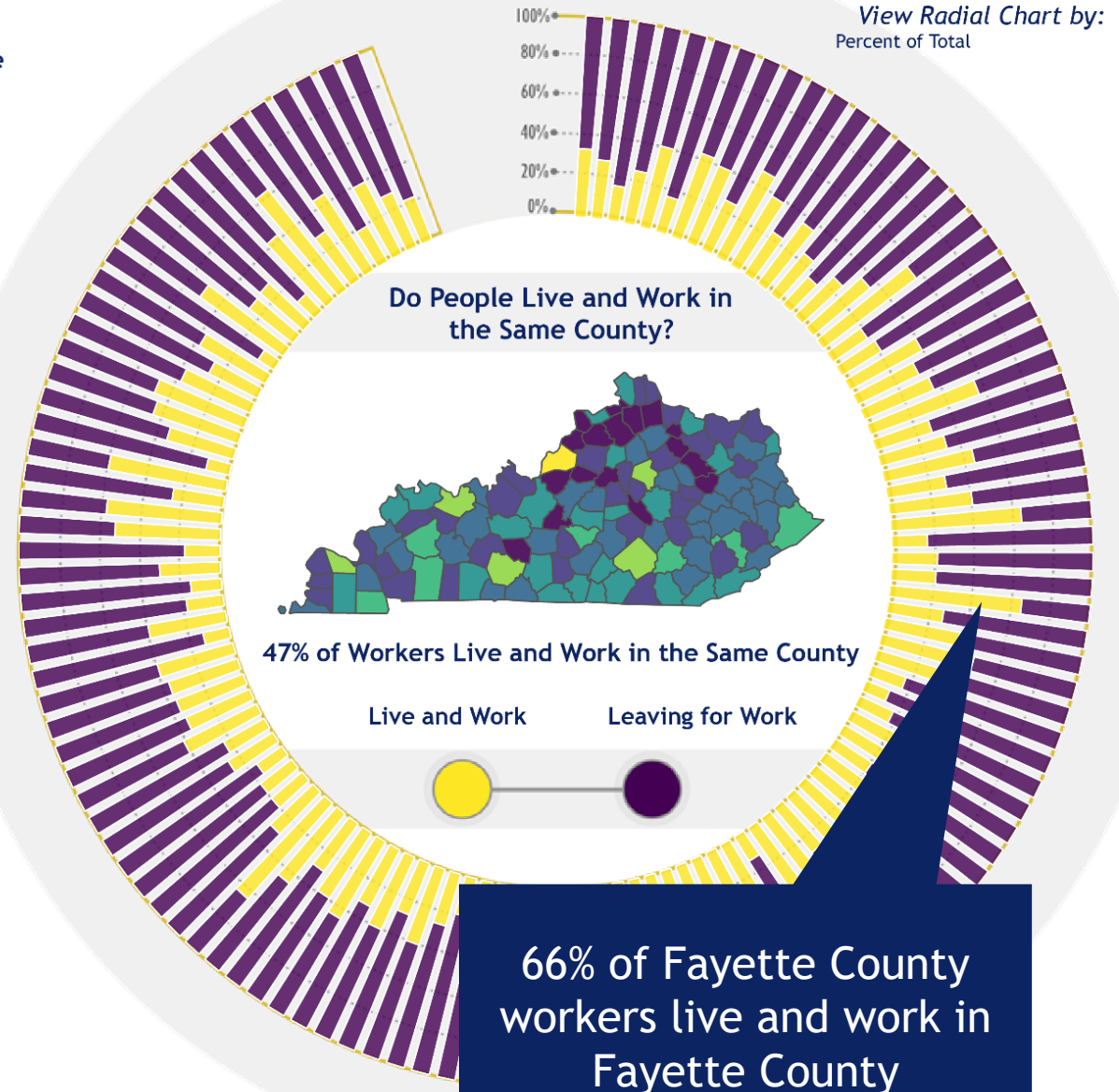
➔ 84,004 live & work in Fayette county

➔ 43,546 commute to another county for work

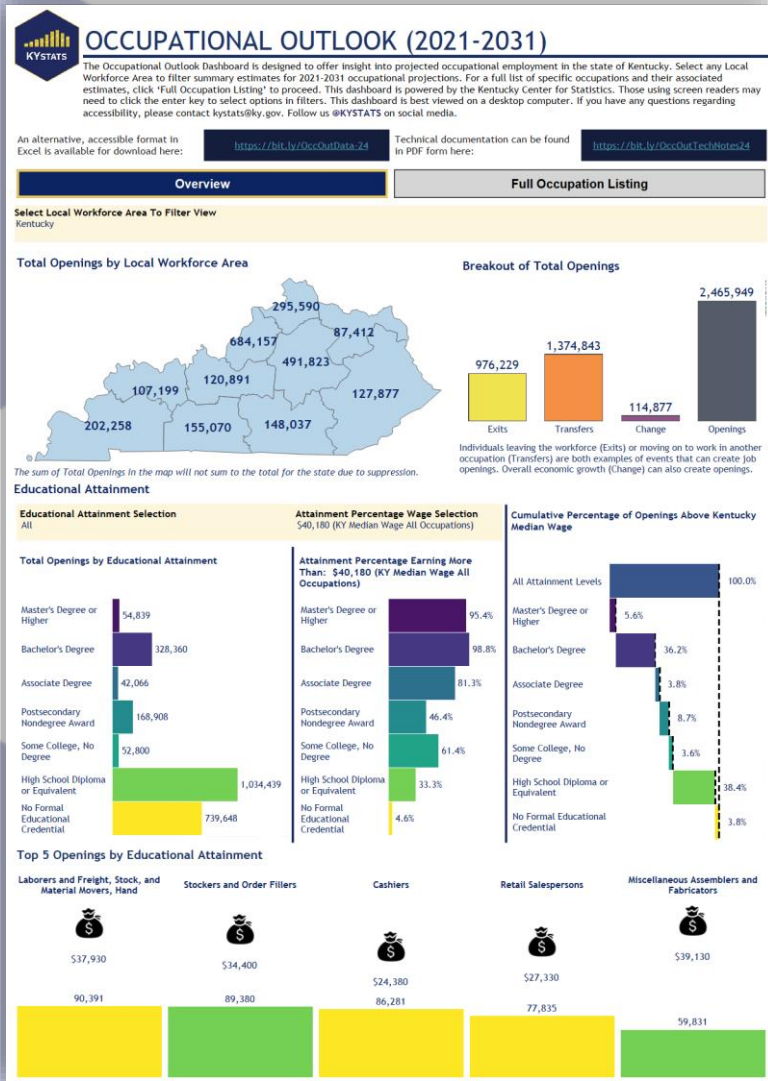
Do People Live and Work in the Same LWA?



Do People Live and Work in the Same County?



OCCUPATIONAL OUTLOOK (2021-2031)



Scan the QR code to view this report



<https://kystats.ky.gov/Latest/OCC>

OCCUPATIONAL OUTLOOK - OVERVIEW

This dashboard is intended to harness occupational employment projections to inform decisions made by Kentucky's students, job seekers, counselors, economic development professionals, market analysts, and any other individuals interested in the future of Kentucky's job market.

Map - Total Openings by Local Workforce Area

- estimate summaries for the state & each local workforce area (LWA)

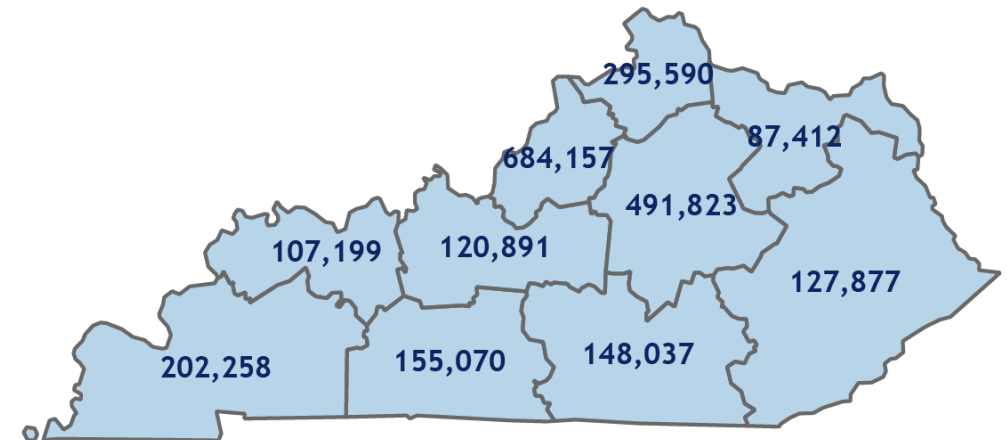
Bar Graph - Breakout of Total Openings

- total number of projected job openings for a specific area in the next ten years
- projected levels of each type of event that can produce an opening (Exits, Transfers, and Change)

Select Local Workforce Area To Filter View

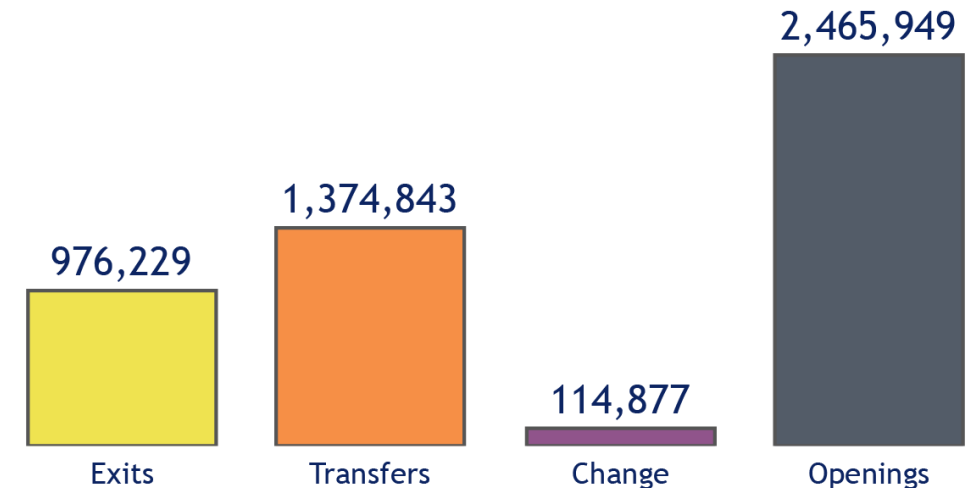
Kentucky

Total Openings by Local Workforce Area



The sum of Total Openings in the map will not sum to the total for the state due to suppression.

Breakout of Total Openings



Individuals leaving the workforce (Exits) or moving on to work in another occupation (Transfers) are both examples of events that can create job openings. Overall economic growth (Change) can also create openings.

OCCUPATIONAL OUTLOOK - OVERVIEW

Educational Attainment

Total Openings & Top 5 Openings by Educational Attainment

- filterable by educational attainment level

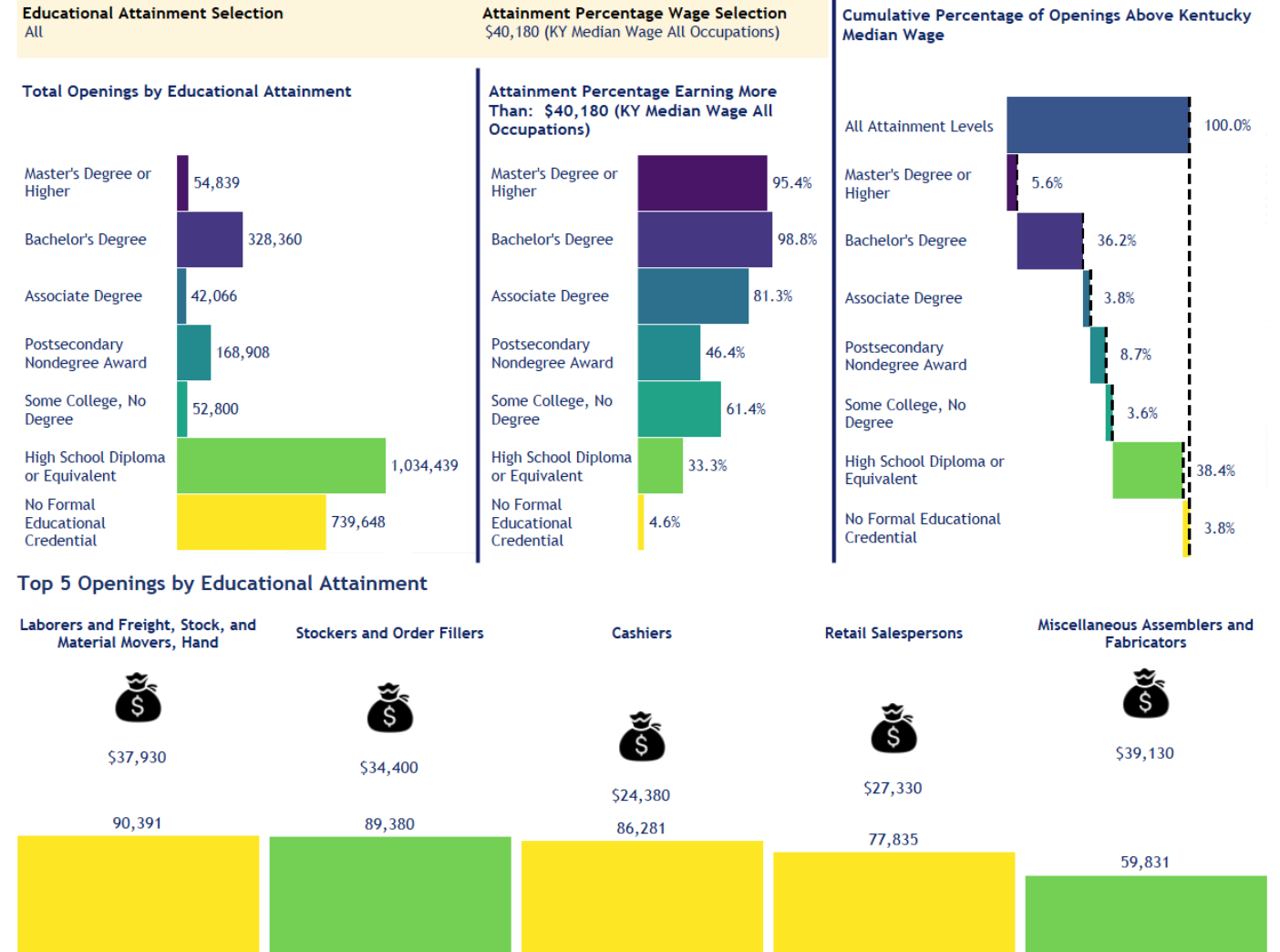
Attainment Percentage Earning More Than:

- filterable by attainment percentage wage selection

Cumulative Percentage of Openings Above Kentucky Median Wage

- \$40,180 wage for All Occupations

Educational Attainment



OCCUPATIONAL OUTLOOK - OVERVIEW

Educational Attainment Selected:

- High School Diploma or Equivalent
- Bachelor's Degree

Educational Attainment Selection

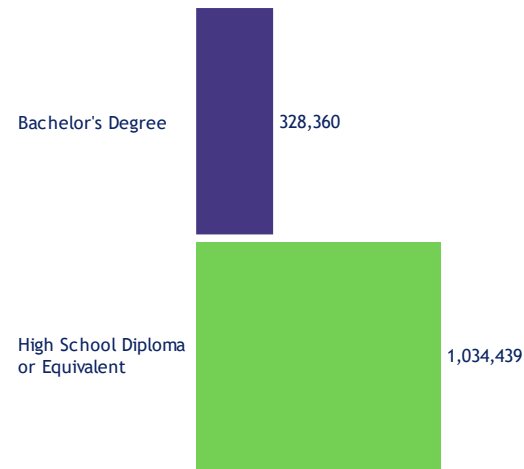
(Multiple values)

- (All)
- Associate Degree
- Bachelor's Degree
- High School Diploma or Equivalent
- Master's Degree or Higher
- No Formal Educational Credential
- Postsecondary Nondegree Award
- Some College, No Degree

Educational Attainment

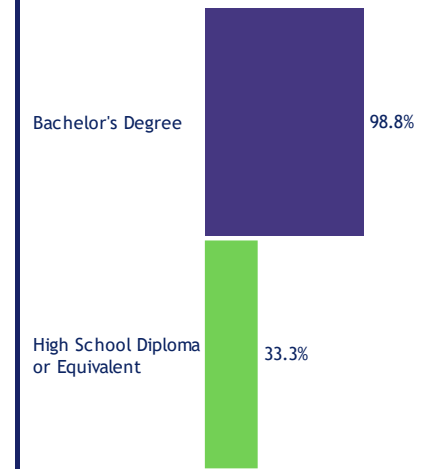
Educational Attainment Selection
Multiple values

Total Openings by Educational Attainment

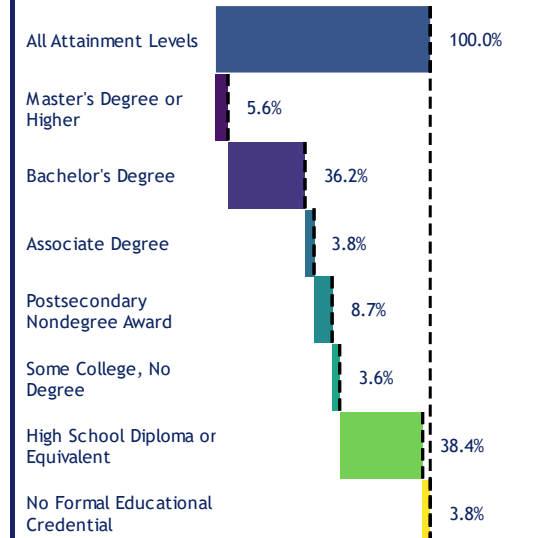


Attainment Percentage Wage Selection
\$40,180 (KY Median Wage All Occupations)

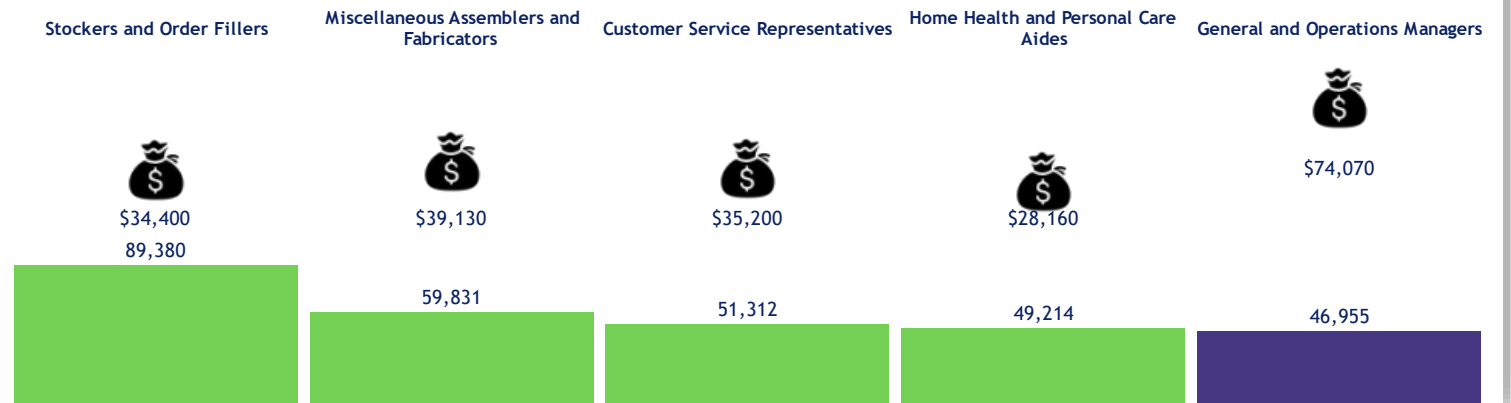
Attainment Percentage Earning More Than: \$40,180 (KY Median Wage All Occupations)



Cumulative Percentage of Openings Above Kentucky Median Wage



Top 5 Openings by Educational Attainment



OCCUPATIONAL OUTLOOK – FULL OCCUPATION LISTING

Occupation Table

- Filterable by
 - Local Workforce Area
 - Typical Education Required
 - Occupation Group
 - Includes Keyword search
- Table displays
 - Estimated Employment
 - Projected Employment
 - Change
 - Percent Change
 - Exits
 - Transfers
 - Openings
 - Median Wage
 - Typical Education Required
 - Typical Work Experience
 - Typical Job Training
 - Grow Rate

Local Workforce Area	Typical Education Required	Group	Keyword										
Kentucky	All	All											
<i>The three tables below provide the categories and definitions for education, experience, and training columns in the Occupation Table.</i>													
Typical Education 1 Doctoral or professional degree 2 Master's degree 3 Bachelor's degree 4 Associate degree 5 Postsecondary nondegree award 6 Some college, no degree 7 High school diploma or equivalent 8 No formal educational credential		Typical Experience 1 5 years or more 2 Less than 5 years 3 None											
		Typical Training 1 Internship/residency 2 Apprenticeship 3 Long-term on-the-job training 4 Moderate-term on-the-job training 5 Short-term on-the-job training 6 None											
The level of educational attainment typically required for entry into an occupation.		Related work experience typically required for entry into an occupation.											
		On-the-job-training typically needed to reach competency within an occupation.											
Occupation Table													
		Estimated Employment	Projected Employment	Change	Percent Change	Exits	Transfers	Openings	Median Wage	Typical Education as a Number	Work Experience as Number	Typical on Job Training Number	Grow Rate
00-0000	Total All Occupations	1,988,295	2,103,172	114,877	5.78%	976,229	1,374,843	2,465,949	\$40,180				0.56%
11-0000	Management Occupations	128,855	140,232	11,377	8.83%	36,832	74,796	123,005	\$83,970				0.85%
11-1011	Chief Executives	3,727	3,467	-260	-6.98%	1,115	1,487	2,342	\$157,790	3	1	6	-0.72%
11-1021	General and Operations Managers	47,798	51,655	3,857	8.07%	11,422	31,676	46,955	\$74,070	3	1	6	0.78%
11-2011	Advertising and Promotions Managers	373	404	31	8.31%	74	307	412	\$61,390	3	2	6	0.80%
11-2021	Marketing Managers	2,369	2,586	217	9.16%	564	1,585	2,366	\$117,980	3	1	6	0.88%
11-2022	Sales Managers	7,933	8,331	398	5.02%	1,858	4,813	7,069	\$103,190	3	2	6	0.49%
11-2032	Public Relations Managers	444	472	28	6.31%	123	250	401	\$99,010	3	1	6	0.61%
11-2033	Fundraising Managers	202	212	10	4.95%	56	113	179	\$92,710	3	1	6	0.48%
11-3012	Administrative Services Managers	2,395	2,580	185	7.72%	817	1,236	2,238	\$97,360	3	2	6	0.75%
11-3013	Facilities Managers	1,148	1,222	74	6.45%	345	616	1,035	\$81,160	3	2	6	0.63%
11-3021	Computer and Information Systems M..	2,500	2,843	343	13.72%	493	1,463	2,299	\$121,170	3	1	6	1.29%
11-3031	Financial Managers	6,351	7,382	1,031	16.23%	1,684	3,428	6,143	\$113,800	3	1	6	1.52%

OCCUPATIONAL OUTLOOK - FULL OCCUPATION LISTING

Group
Healthcare Practitioners and Technical Occupations
All
Management Occupations
Business and Financial Operations Occupations
Computer and Mathematical Occupations
Architecture and Engineering Occupations
Life, Physical, and Social Science Occupations
Community and Social Service Occupations
Legal Occupations
Education, Training, and Library Occupations
Arts, Design, Entertainment, Sports, and Media Occupations
Healthcare Practitioners and Technical Occupations
Healthcare Support Occupations
Protective Service Occupations
Food Preparation and Serving Related Occupations
Building and Grounds Cleaning and Maintenance Occupations
Personal Care and Service Occupations
Sales and Related Occupations
Office and Administrative Support Occupations
Farming, Fishing, and Forestry Occupations
Construction and Extraction Occupations
Installation, Maintenance, and Repair Occupations
Production Occupations
Transportation and Material Moving Occupations

Occupation Table

		Estimated Employment	Projected Employment	Change	Percent Change	Exits	Transfers	Openings	Median Wage	Typical Education as a Number	Work Experience as Number	Typical on Job Training Number	Grow Rate
29-0000	Healthcare Practitioners and Technical Occupations	137,383	149,077	11,694	8.51%	43,673	42,202	97,569	\$64,540				0.82%
29-1011	Chiropractors	658	709	51	7.75%	145	50	246	\$72,580	1	3	6	0.75%
29-1021	Dentists, General	1,445	1,513	68	4.71%	304	111	483	\$135,390	1	3	6	0.46%
29-1022	Oral and Maxillofacial Surgeons	123	128	5	4.07%	26	9	40		1	3	1	0.40%
29-1023	Orthodontists	57	60	3	5.26%	12	4	19		1	3	1	0.51%
29-1029	Dentists, All Other Specialists	151	154	3	1.99%	31	11	45		1	3	1	0.20%
29-1031	Dietitians and Nutritionists	1,182	1,280	98	8.29%	424	388	910	\$61,910	3	3	1	0.80%
29-1041	Optometrists	488	529	41	8.40%	104	44	189	\$121,380	1	3	6	0.81%
29-1051	Pharmacists	5,215	5,549	334	6.40%	1,147	959	2,440	\$129,690	1	3	6	0.62%
29-1071	Physician Assistants	1,170	1,476	306	26.15%	284	454	1,044	\$105,840	2	3	6	2.35%
29-1081	Podiatrists	66	66	0	0.00%	12	4	16	\$132,160	1	3	1	0.00%

Filters Used

- Local Workforce Area: KENTUCKY
- Typical Education Required: ALL
- Group: HEALTHCARE PRACTITIONERS & TECHNICAL OCCUPATIONS

Occupation Table

		Estimated Employment	Projected Employment	Change	Percent Change	Exits	Transfers	Openings	Median Wage	Typical Education as a Number	Work Experience as Number	Typical on Job Training Number	Grow Rate
29-0000	Healthcare Practitioners and Technical Occupations	137,383	149,077	11,694	8.51%	43,673	42,202	97,569	\$64,540				0.82%
29-1141	Registered Nurses	46,105	48,889	2,784	6.04%	15,228	11,794	29,806	\$75,800	3	3	6	0.59%
29-2061	Licensed Practical and Licensed Vocational Nurses	10,563	11,193	630	5.96%	4,341	4,430	9,401	\$49,210	5	3	6	0.58%
29-2052	Pharmacy Technicians	7,808	8,044	236	3.02%	2,849	4,290	7,375	\$35,230	7	3	4	0.30%
29-1171	Nurse Practitioners	4,656	6,696	2,040	43.81%	1,291	1,617	4,948	\$104,630	2	3	6	3.70%
29-2010	Clinical Laboratory Technologists and Technicians	5,553	5,847	294	5.29%	1,813	2,112	4,219	\$50,080	3	3	6	0.52%
29-2072	Medical Records Specialists	4,264	4,617	353	8.28%	1,613	1,550	3,516	\$42,640	5	3	6	0.80%
29-1051	Pharmacists	5,215	5,549	334	6.40%	1,147	959	2,440	\$129,690	1	3	6	0.62%
29-2056	Veterinary Technologists and Technicians	1,774	2,213	439	24.75%	648	1,288	2,375	\$30,750	4	3	6	2.24%
29-1127	Speech-Language Pathologists	2,694	3,222	528	19.60%	813	957	2,298	\$78,490	2	3	1	1.81%
29-1123	Physical Therapists	3,517	4,115	598	17.00%	930	738	2,266	\$85,710	1	3	6	1.58%

Ready to Learn More?

kystats.ky.gov

Matt Berry, Ph.D.
Executive Director

matt.berry@ky.gov

Beth Kelly, Ph.D.
Research Director

beth.kelly@ky.gov



  
[@kystats](https://www.kystats.gov)

Join our mailing list!

