

UNIVERSITY OF PIKEVILLE

Dr. Lori Werth
Executive Vice President
University of Pikeville

Laura Damron
Assistant Vice President
University of Pikeville

Greg May
CEO/President
Utility Management Group

Friday, November 21, 2025

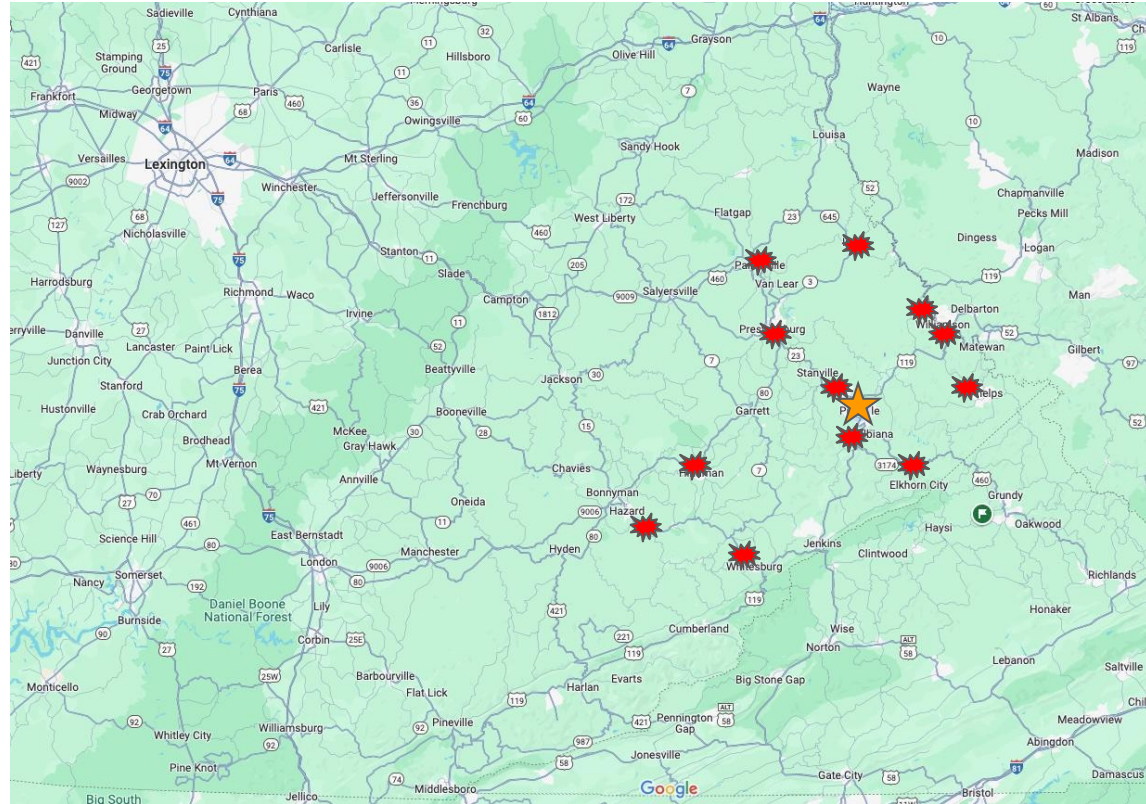
East Kentucky Disaster Relief Center at Bear Mountain



Pikeville



Major flooding in the last three years





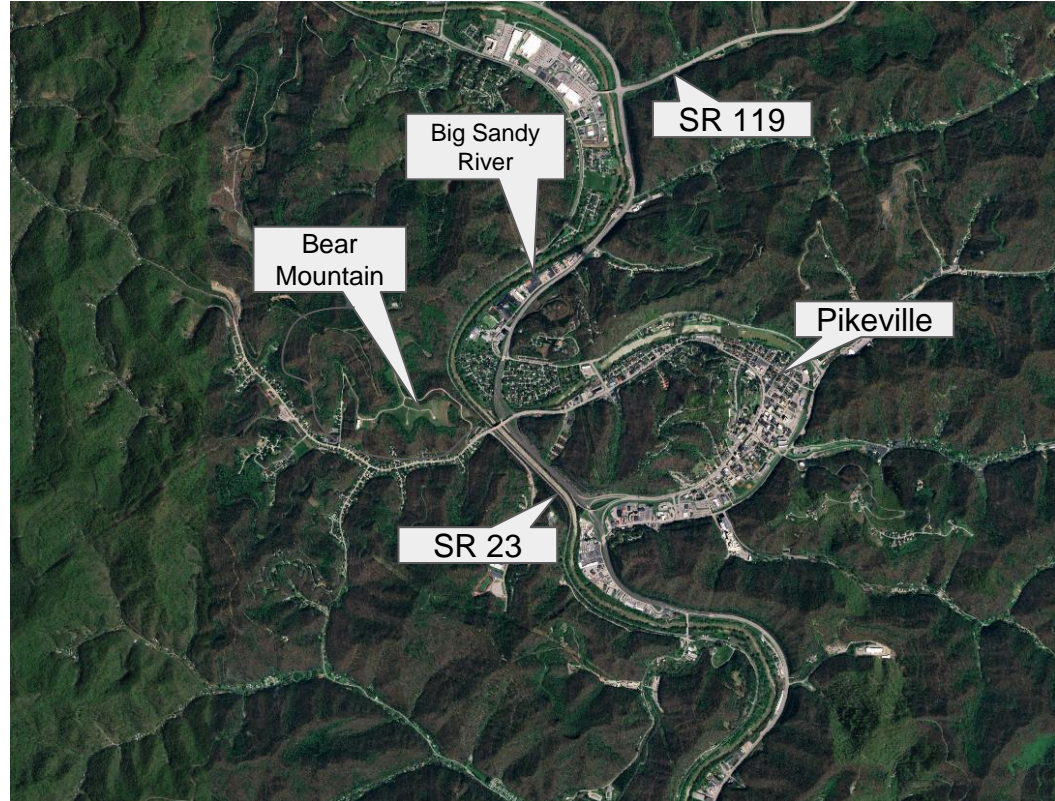
FLOODING IN EASTERN KENTUCKY

SEVERE WEATHER



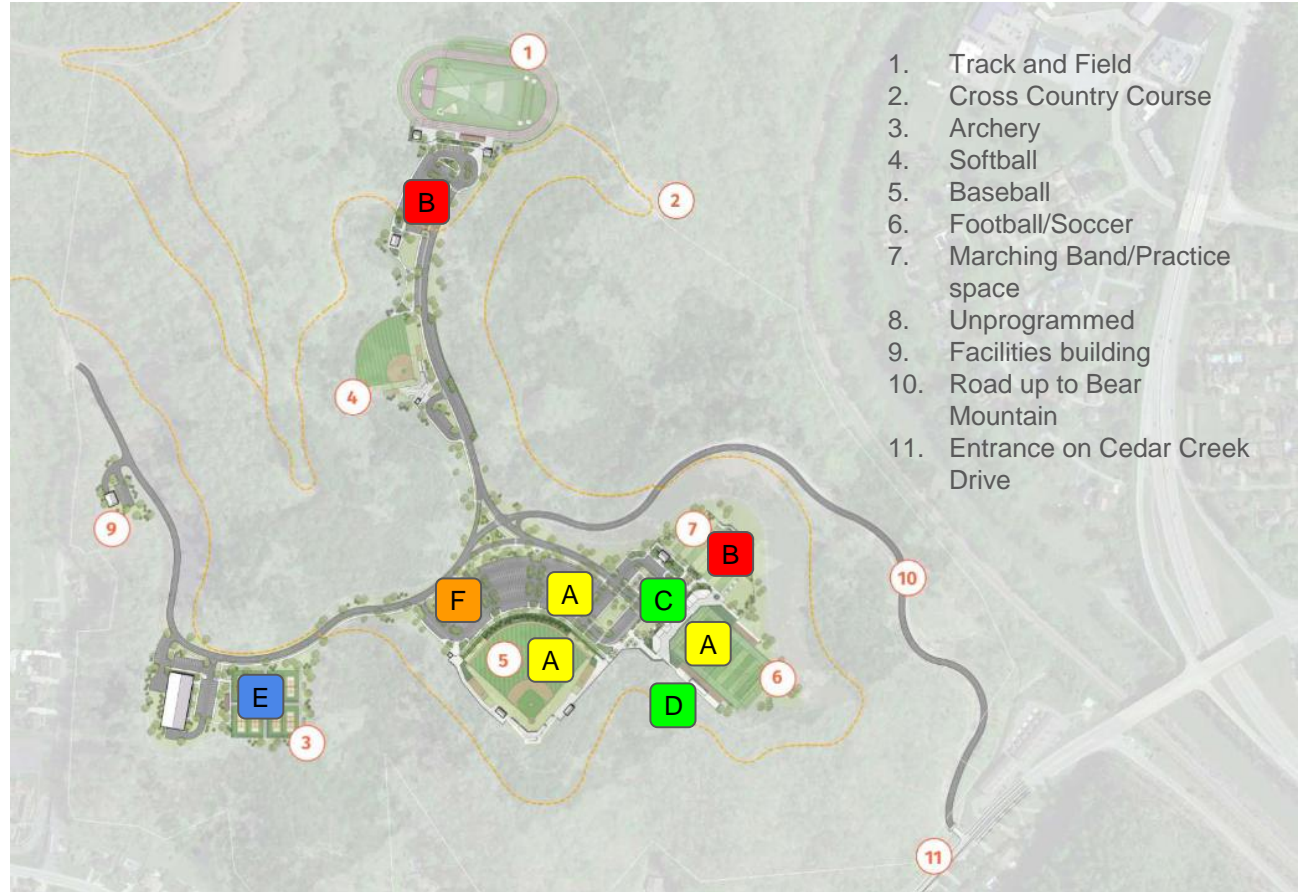
Location and Access

- Bear Mountain is across the river from Pikeville, KY
- The entrance is approximately 200 feet from SR 23.
- Bear Mountain elevation is around 1,100 feet
- River level is around 680 feet
- SR23 and SR119 intersect less than 1 mile from Bear Mountain



Bear Mountain Master Plan with Disaster Relief Center Overlay

- A. Helicopter Landing Sites
- B. RV Hook-ups
- C. Command Center
- D. Communication Center
- E. Distribution Facility
- F. Parking for Relief Vehicles



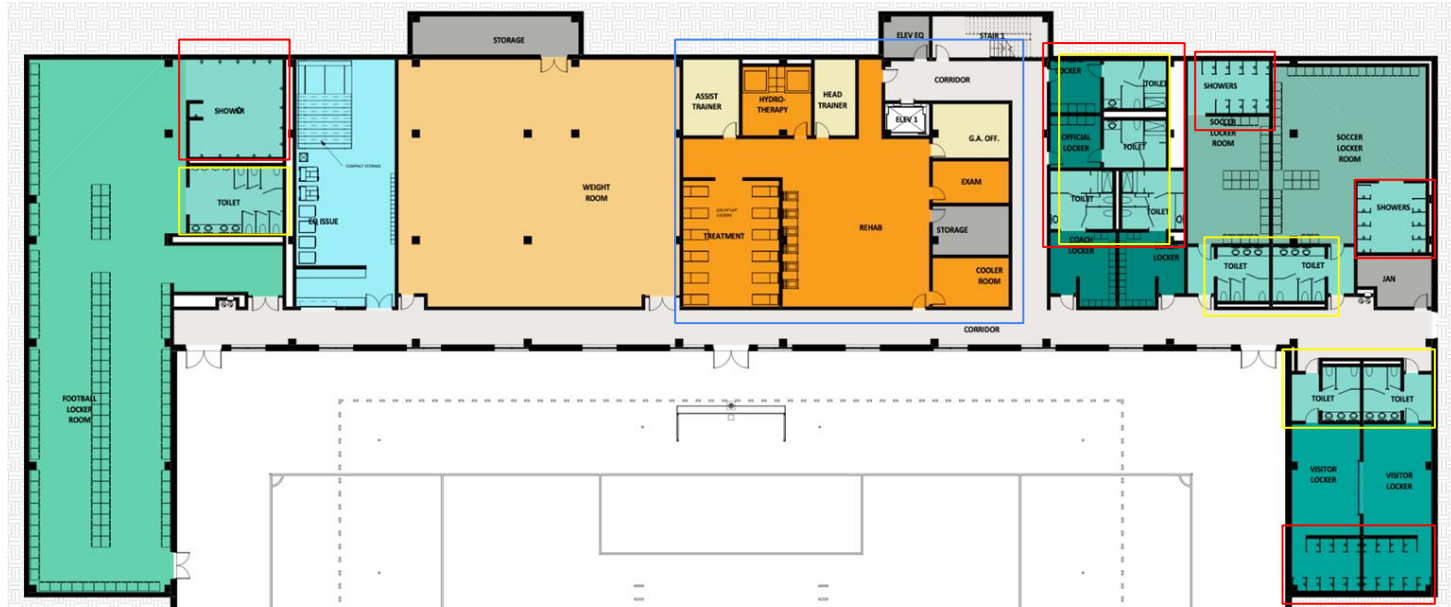
Spaces planned for Bear Mountain that could be outfitted for a Disaster Relief Center:

- Planned three story football, soccer complex with multiple spaces. (see following slides)
- Planned press box complex with several suites (see following slides)



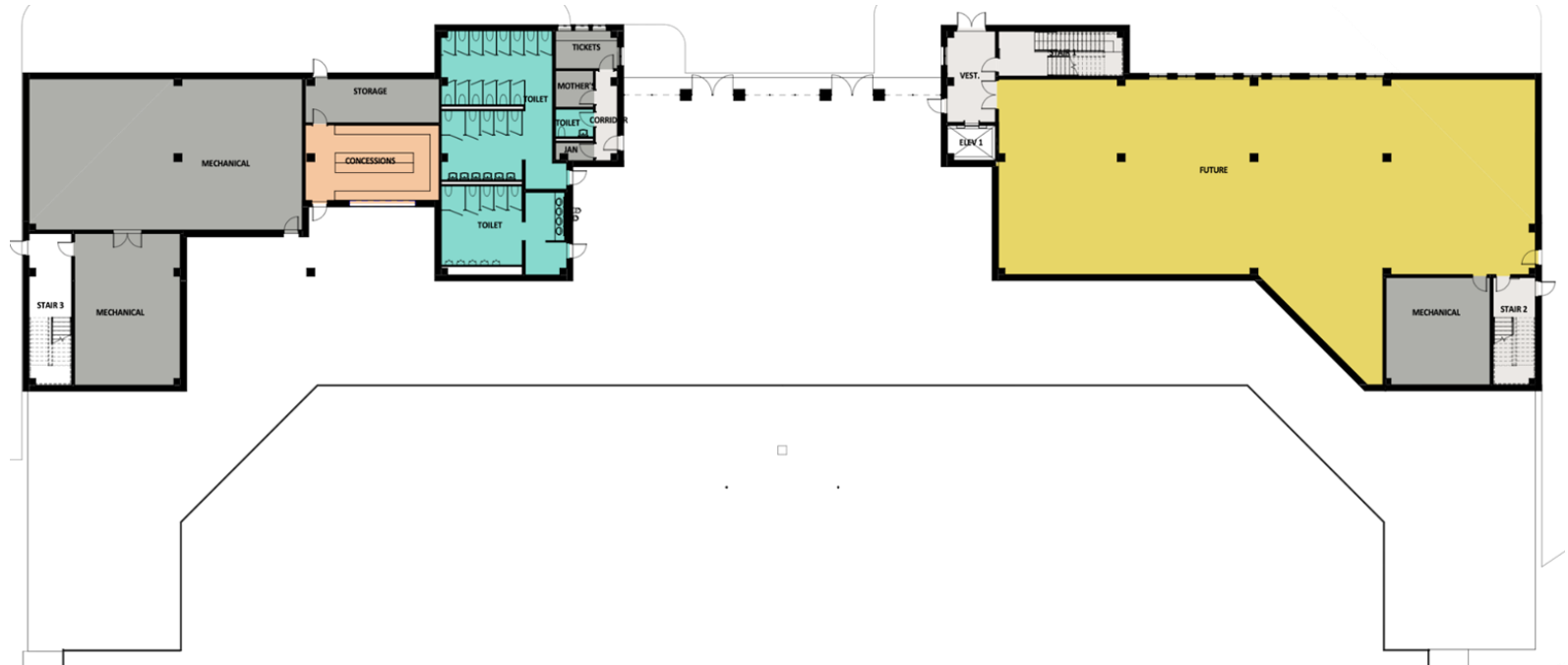
Disaster Relief Command Center - Lower level

- Possible clinic space (outlined in blue) - athletic training space, equipped with basic first aid supplies, etc.
- 56 showers (outlined in red)
- 26 toilets or urinals (outlined in yellow)



Disaster Relief Command Center - Street level

- Emergency shelter space ~ 12K ft² ~ 250 cots (mustard yellow)
- 30 toilets or urinals (green)
- Food delivery - (peach)



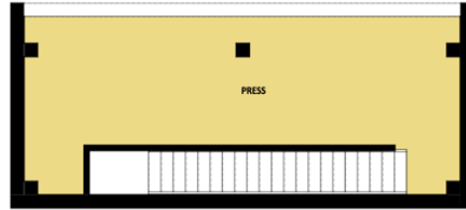
Disaster Relief Command Center - Upper level

- Dining room (mustard yellow)
- Catering - (peach)
- Coaches office space has meeting rooms that could also be used during an emergency.



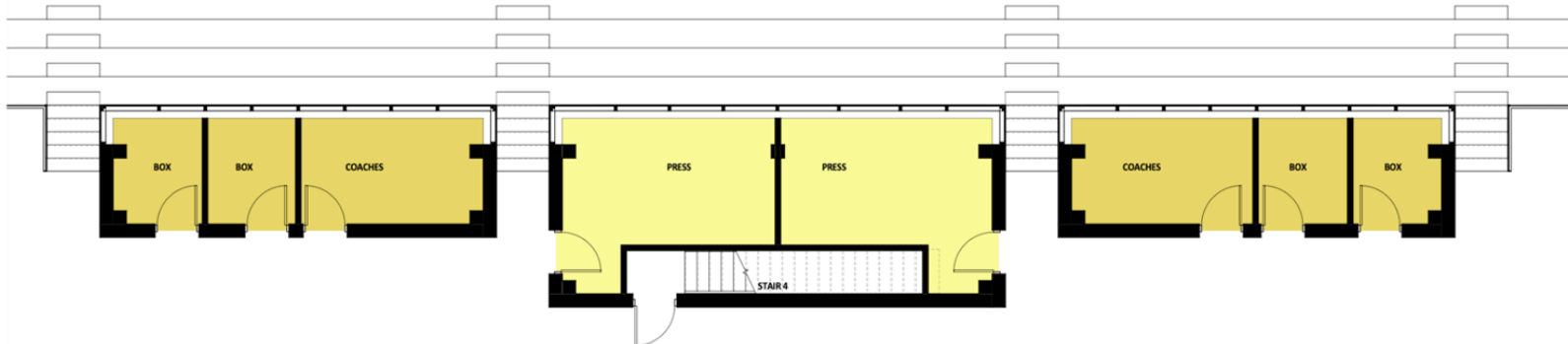
Disaster Relief Center - Communications Center

Each of these spaces can be used for communication. They will have high capacity internet, telecom equipment, video broadcasting equipment, and power.



- Level 2 is up a short flight of steps.
- Level 1 is at the same level as the parking lot.

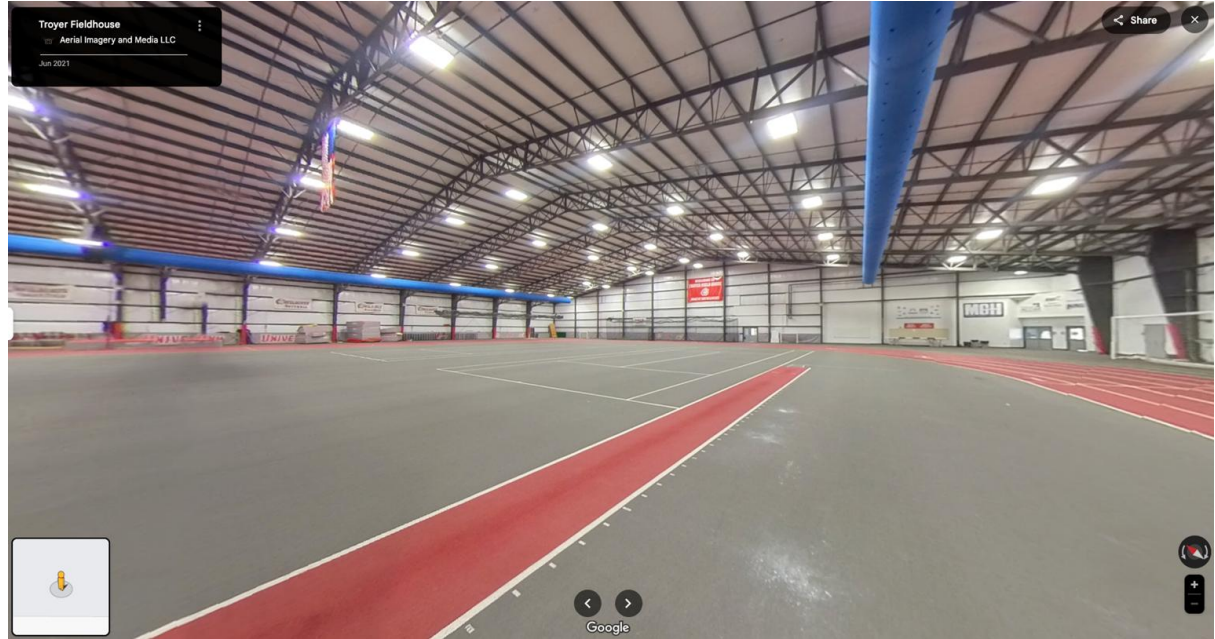
② Press Boxes - Level 2
SCALE 1/4" = 1'-0"



Disaster Relief Center - Distribution Center - New Building

Though it is not a part of our current plan for the Bear Mountain Complex, an indoor track facility would meet the needs of the region and could easily be used as a distribution center during times of disaster. Pictured is the [Troyer Fieldhouse at Indiana Wesleyan University](#).

We estimate \$2.5 to \$3.5M for construction of the shell and site work. Interior finishes related to athletic use (indoor track, etc) would be at the university's expense.



Category	Description	Estimated Cost
Disaster Relief Communications and Center	Two levels of space - 1,500 sq. ft. facility with operations room, comms, backup power, staff offices, and a dining facility where catering is available. They will have high capacity internet, telecom equipment, video broadcasting equipment, and power.	\$1,500,000
Disaster Relief Center and Distribution Center	Constructing 70,000 sq. ft. Disaster Relief and Distribution Center at Bear Mountain is not just timely—it is essential. During a crisis, communities need immediate access to supplies, shelter, medical aid, and coordination. This climate-controlled facility (220 ft. x 320 ft.).	\$3,500,000
50 Camper & RV Hook-up	30-amp service (120V) and several 50-amp service (240V split phase), weatherproof electrical pedestal, proper circuit breakers and grounding, electrical conduit/wiring from panel.	\$500,000
Emergency Shelter & Medical Station	Emergency shelter space that is approximately 12,000 sq. ft. (250 cots), 30 toilets and urinals, 56 showers, and triage clinic.	\$4,000,000
Training/Education Center	Multi-use space for workshops, simulations, and outreach	\$1,500,000
TOTAL Costs		\$11,000,000

Thank you!

Thank you for your thoughtful consideration. A [comprehensive proposal](#) is also available should you wish to review it further. If you have any questions or would like additional information, please feel free to contact:

Dr. Lori Werth

University of Pikeville

Cell: (606) 794-3967

Email: LoriWerth@upike.edu