



---

# **KENTUCKY'S STATE UNIVERSITY TEACHING HOSPITAL**

## **MEDICAID DIRECTED PAYMENT PROGRAM**

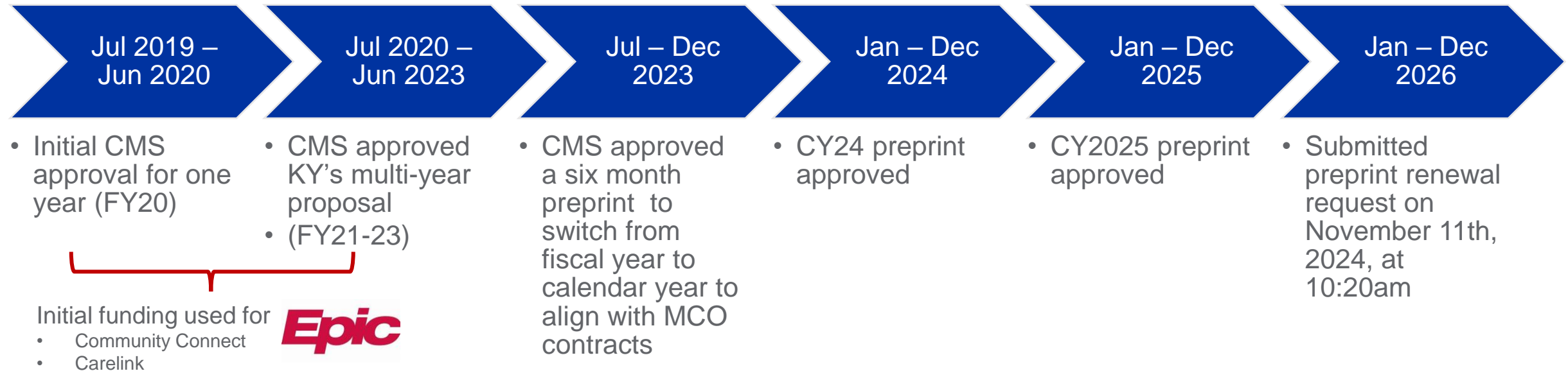
Presentation to: Medicaid Oversight and Advisory Board (MOAB)  
*September 9, 2025*

*A NATIONAL MODEL TO MAKE AMERICA HEALTHY AGAIN*

Mark D. Birdwhistell, Senior Vice President, Health and Public Policy

# KENTUCKY'S STATE UNIVERSITY TEACHING HOSPITAL MEDICAID DIRECTED PAYMENT PROGRAM

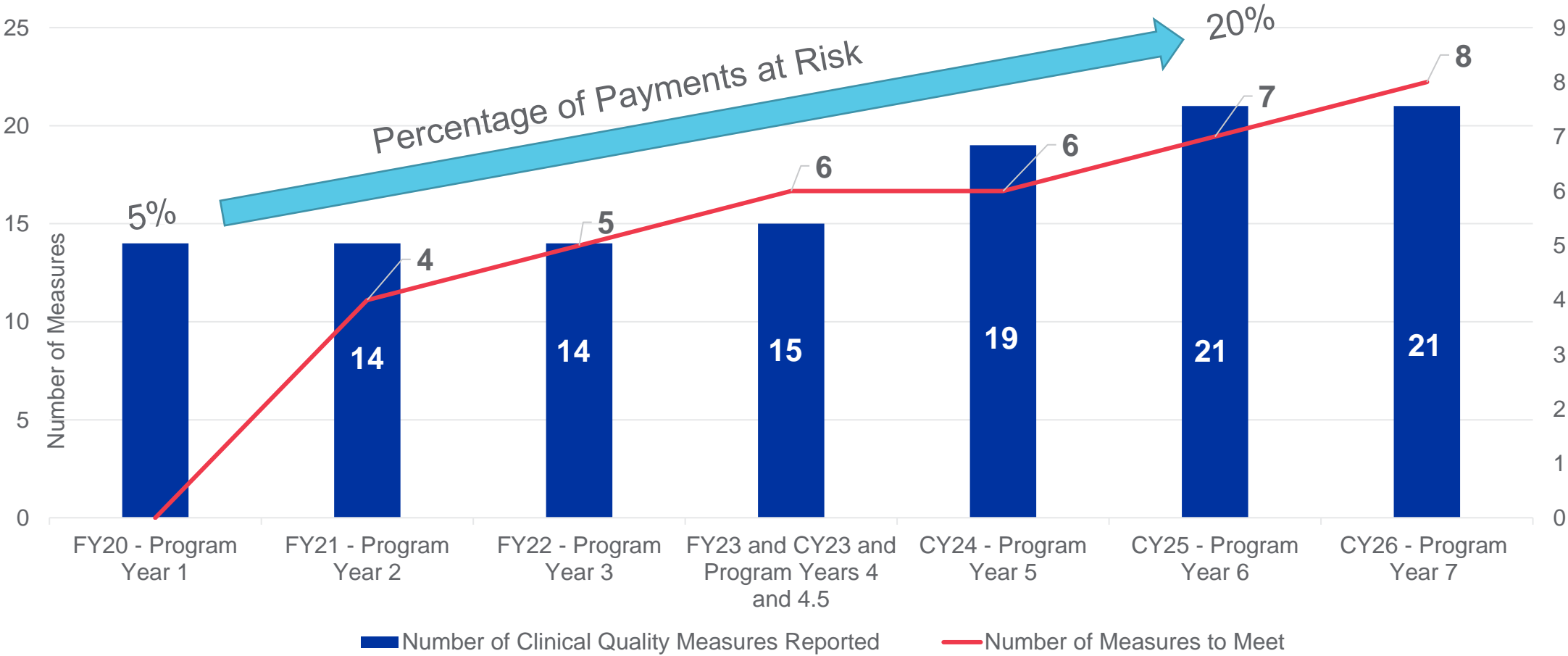
President Donald Trump  
2017 – 2021



**Requirements** - Medicaid Directed Payments must be tied to:

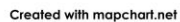
- **Accountability** - Utilization and delivery of services to Medicaid patients
- **Targets** - Quality and Value Metrics must improve access and health outcomes for the Medicaid population
- **Risk** - 20% of funding at risk (all or nothing)

# SUBSTANTIAL INCREASE IN QUALITY PROGRAM REQUIREMENTS



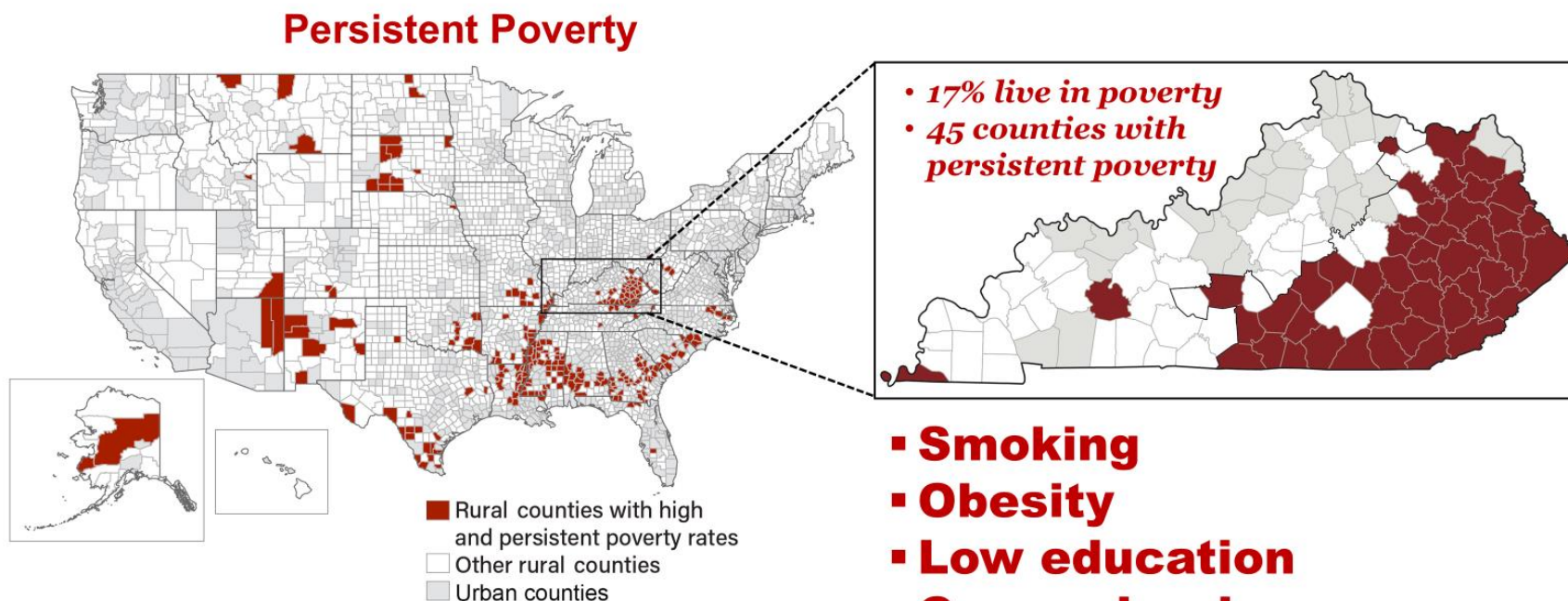
	<u>2019</u>	<u>2024</u>	<u>Increase</u>
Days	93,465	106,238	+13K
CPT Volume	878,178	1,16M	+300K

# Quality and risk component



# Kentucky's Health Challenges

- High burden of smoking, obesity, and cancer
- Significant disparities in rural and Appalachian regions
- Vulnerability Index highlights systemic risk factors



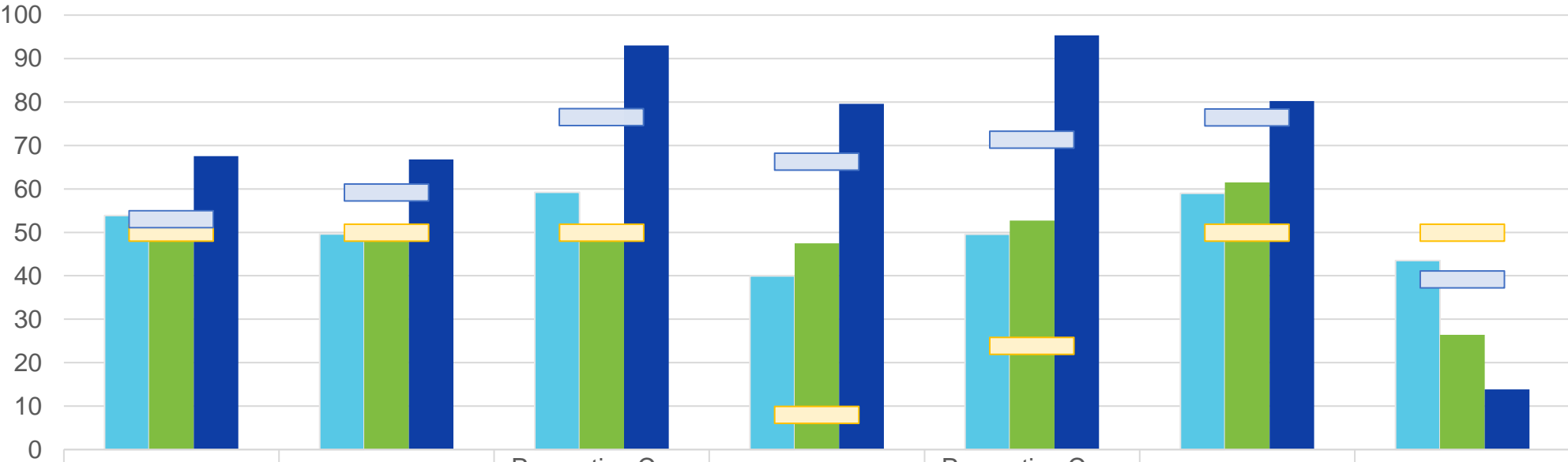
# UNIVERSITY OF KENTUCKY MDP QUALITY MEASURES WITH PERFORMANCE AND THRESHOLDS CY24-26

	Measure Name (blue shading indicates a measure impacting child health)	UK CY24 Performance	Approved Targets CY25	Proposed Targets CY26
1	Breast Cancer Screening	67.6%	54.1%	55.2%
2	Colorectal Cancer Screening	66.8%	60.3%	61.6%
3	Tobacco Use: Screening and Cessation Intervention	93.0%	78.0%	79.6%
4	Screening for Clinical Depression and Follow Up Plan	79.6%	67.6%	69.0%
5	Diabetes Care: Hemoglobin (HbA1c) Poor Control (>9%) ( <i>lower is better</i> )	13.9%	38.4%	37.6%
6	Controlling High Blood Pressure (Hypertension)	71.4%	57.2%	58.4%
7	Statin Therapy for Patients with Cardiovascular Disease	67.4%	83.2%	84.9%
8	Body Mass Index (BMI) Screening and Follow-Up	95.3%	72.8%	74.3%
9	Medication Reconciliation Post-Discharge	96.4%	72.8%	74.3%
10	30-Day All Cause Readmissions ( <i>lower is better</i> )	12.56%	11.0%	10.8%
11	Use of Opioids at High Dosage ( <i>lower is better</i> )	2.3%	=<1.5%	=<1.5%
12	Childhood Immunization Status ( <i>Combo 7 in 2025-26</i> )	37.8%	TBD	TBD
13	Well Child Visits : Age 3 – 6 years	88.3%	90.0%	90.0%
14	Well Child Visits: Rate 1: 0-15 Months	80.2%	78.0%	79.6%
15	Well Child Visits: Rate 2:15-30 Months	86.6%	81.8%	TBD
16	Screening for Depression and Follow-Up Plan: Ages 12 to 17	60.2%	77.7%	TBD
17	Body Mass Index (BMI) Screening and Follow-Up: Ages 12 to 17	90.4%	61.5%	TBD
18	Post-Partum Depression Screening	94.6%	77.8%	TBD
19	Social Determinants of Health Screening	64.2%	19.9%	TBD
20	Childhood Immunization Status (Combo 10)	N/A	Monitoring Measure	Monitoring Measure
21	Immunizations for Adolescents	N/A	Reporting Only	Reporting Only



# UNIVERSITY MDP QUALITY MEASURE PERFORMANCE VS. NATIONAL BENCHMARKS

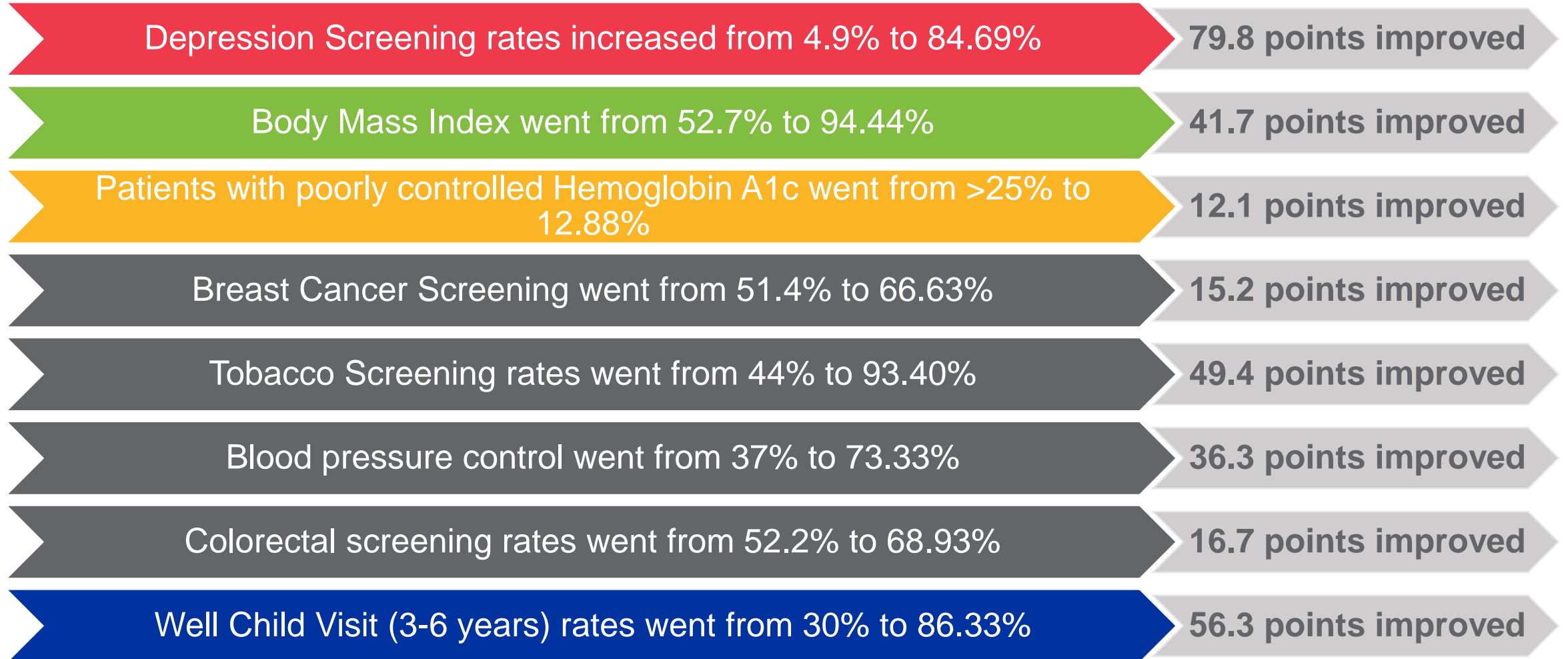
These are not cupcake measures



	Breast Cancer Screening	Colorectal Cancer Screening	Preventive Care and Screening: Tobacco Use: Screening and Cessation Intervention	Preventive Care and Screening: Screening for Depression and Follow-Up Plan	Preventive Care and Screening: Body Mass Index (BMI) Screening and Follow-Up Plan	Well Child Visits: 0-15 Months	Diabetes: Hemoglobin A1c (HbA1c) Poor Control (>9%) - Lower is Better
2024 National Average	53.86	49.64	59.2	39.95	49.56	59	43.53
FY2020 MDP Performance	54.8	51.4	50.1	47.5	52.7	61.5	26.4
CY2024 MDP Performance	67.56	66.77	93.03	79.59	95.32	80.2	13.87
FY2021 MDP Target	50	50	50	8.04	23.89	50	50
CY2024 MDP Target	53	59.2	76.5	66.3	71.4	76.5	39.2

2024 National Average FY2020 MDP Performance CY2024 MDP Performance FY2021 MDP Target CY2024 MDP Target

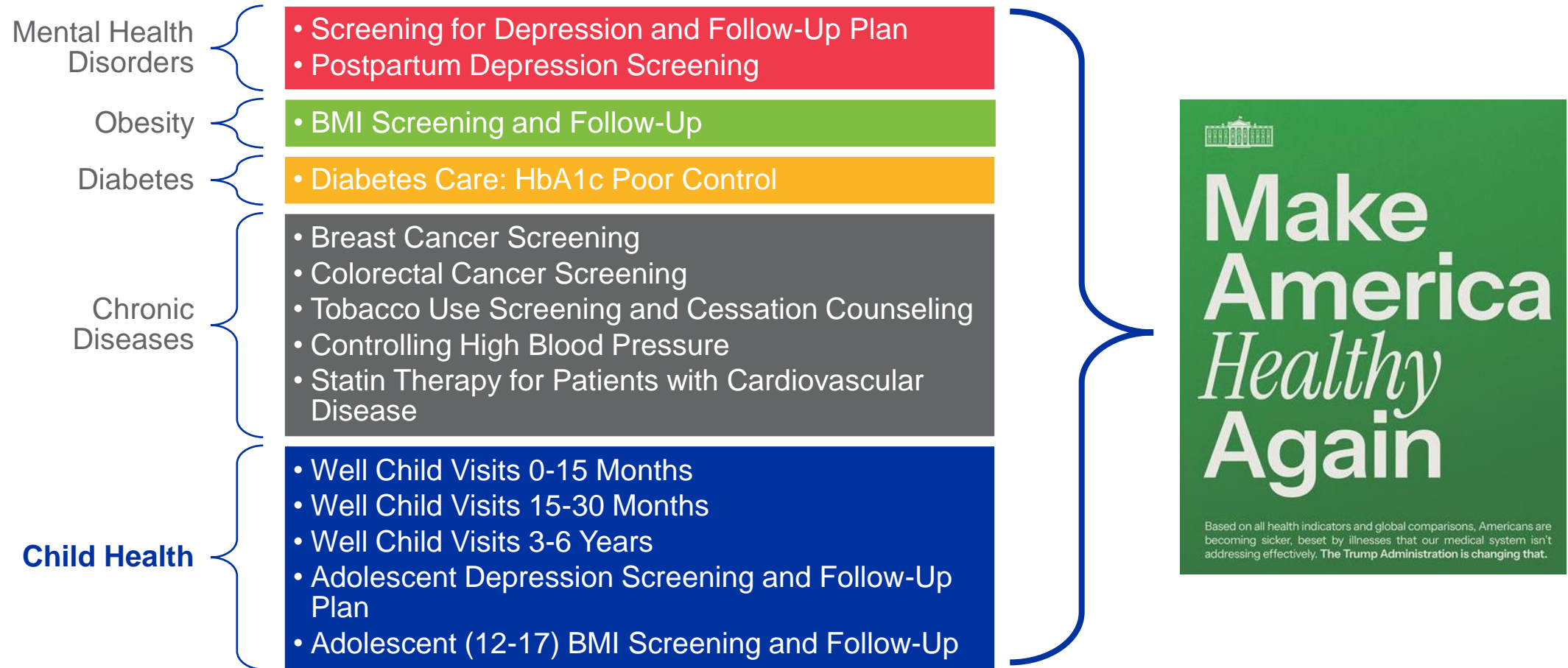
## UK HEALTHCARE IMPROVEMENTS FROM 2019 TO 2025 UNDER THE UNIVERSITY MEDICAID DIRECTED PAYMENT PROGRAM





## PROPOSED AND ANTICIPATED ACTIONS

### The University of Kentucky's alignment with Make America Healthy Again priorities



# Health is improving in Kentucky

Kentucky ranks #37 in the nation  
and #3 in the Southeast Region



Note: Southeast region includes AL, AR, FL, GA, KY, LA, MS, NC, SC, TN, VA, WV.

National Health Rankings		
2014	2024	2025
47 <sup>th</sup>	41 <sup>st</sup>	37 <sup>th</sup>

Key Improvement Areas

Blood tests for Adults with Diabetes | Adults with Substance Use disorder | Children’s mental healthcare

Source: Commonwealth Fund 2025 Scorecard on State Health System Performance





# UK HealthCare

