

What does this modality/product claim to do?

Cosmetic?

- A preparation, such as powder or a skin cream, designed to beautify the body by direct application or cover a defect.
- Serving to beautify the body, especially the face and hair.
- Serving to modify or improve the appearance of a physical feature, or irregularity.

STOP

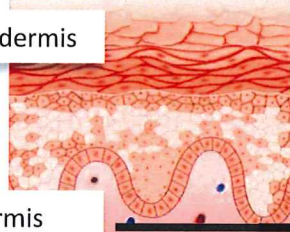
Medical?

Preventing or alleviating or curing diseases and injuries, penetration or removal of tissues with in or on the body

What layer of the skin is directly affected?



Epidermis



Dermis

STOP

Estheticians cannot apply products or use modalities that directly penetrate the dermis.

On what part of the body will this be used or applied?
Is that body part listed in my state statute as an approved area?

Is this modality/product type approved in state rules?

NO

YES

NO

Do I have training in this modality/product based on professional best practices?

YES

NO

Do I have practical experience with this modality?

YES

NO

Do I understand the contraindications and how to keep my client safe?

YES

NO

Do I have insurance coverage in case something happens?

YES



You are good to perform this modality or use this product with in manufacturer guidelines. Remember when in doubt check with your state board.

Is it prohibited in state rules?

YES

NO

STOP

Can this modality/product be proven to cause harm if used/applied incorrectly?

YES

NO

Do not proceed until written approval is given by your state board. Your liability insurance may not cover this. You can be facing possible enforcement action and it is likely the board will disallow this practice.

STOP

Is this modality/product recognized in a widely accepted professional textbook?

YES

NO

DO NOT use a modality or products on your client that you do not have adequate knowledge and skill using.



Use Caution! You are responsible for the safety of your treatments and products.



It's best to get a formal interpretation from your state board before purchasing. You will be liable for all risk and face a possible enforcement action if the board disallows this at a later date.