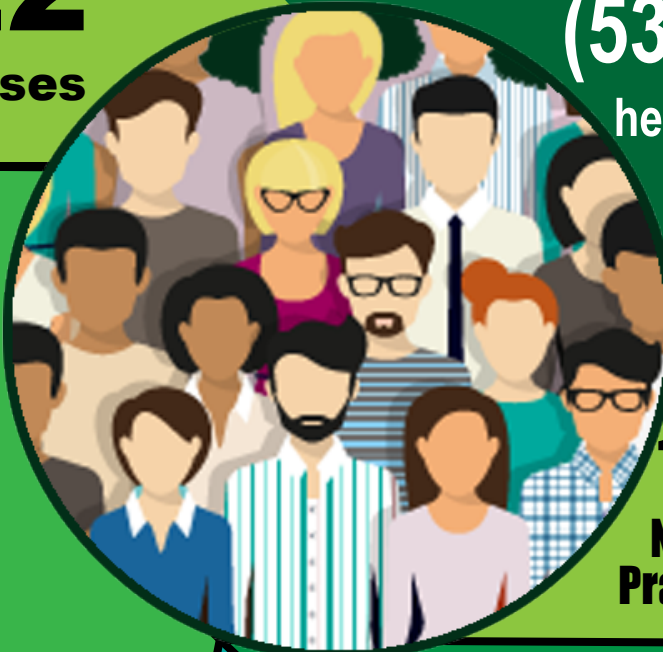


Kentucky's Nursing Workforce

90,022
Kentucky Nurses

Nurses make up more than half
(53%) of the
healthcare workforce
(ANA, 2021).



The October 2021
KNA survey indicated

25%

of nurses reported
being likely/
extremely likely
to leave their job in
the next 3 months.



12,600
Nurse
Practitioners 

The October 2021 KNA Survey, **(26%)**
of respondents cited physical
exhaustion as a reason for the nursing
shortage.

The average age of a nurse is

42.

Many are leaving due
to retirement.



**Other
Professional
Groups in Kentucky**



Teachers
42,769



Physicians **6,709**



EMTs
4500

