



# The Passport Difference: Working Together for a Healthier Kentucky

Interim Joint Committee on  
Health & Welfare & Family Services

January 23, 2019



# Passport Health Plan: A Leader in Medicaid for 20+ Years



Provider-  
Sponsored



Non-profit and  
Mission-driven

21 YEARS

Nationally Recognized and  
Committed Kentucky  
Corporate Citizen

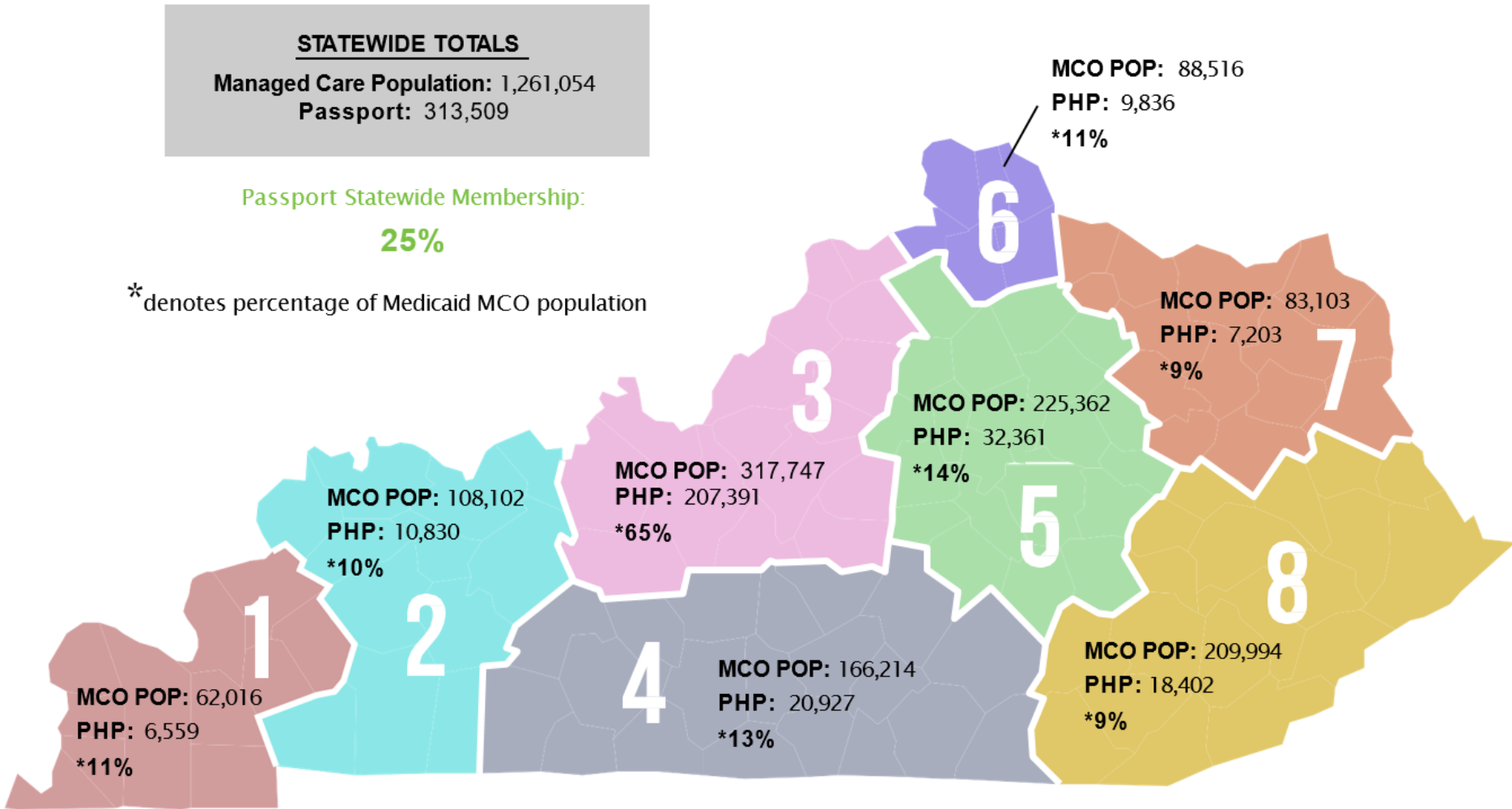
310K

Members  
in 120 Kentucky  
Counties



**PASSPORT**  
HEALTH ★ PLAN 

# Passport Market Share of Total MCO Membership by Region



“Source: KY Data Warehouse Weekly Membership Counts (as of 12/31/18)”

# Passport Health Plan: A Leader in Medicaid for 20+ Years

An Essential Partner for Kentucky: **Passport has added value to the Commonwealth for over 20 years.**

Managed care has been a tremendous value for Kentucky, significantly driving down the cost of Medicaid compared to the old fee for service model. Passport has been at the forefront of these cost-savings for more than 20 years.

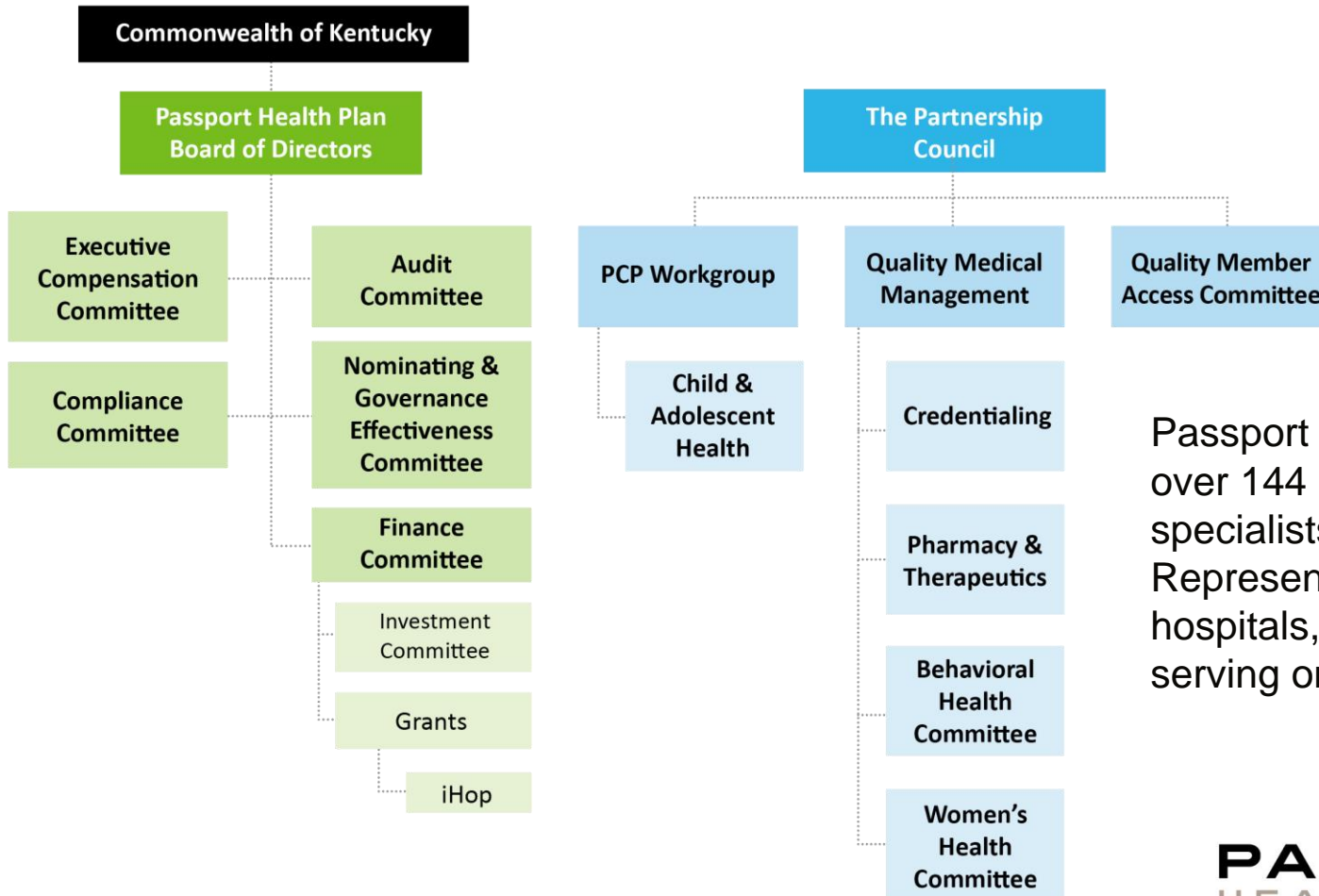
**Provider Sponsored: Our Provider partners and sponsors are critical in driving the direction of Passport**

- University of Louisville Physicians
- Louisville/Jefferson County Primary Care Association
- Norton Healthcare, Inc.
- Jewish Heritage Fund for Excellence (Formerly Jewish Hospital)
- University Medical Center, Inc.

# The Passport Difference: Working Together for a Healthier Kentucky



## Organizational Structure



Passport currently has over 144 members, PCPs, specialists, Pharmacists, Representatives from hospitals, and Advocates serving on its committees.

# The Passport Difference: Ensuring the Most Effective Use of Taxpayer Dollars

For every Medicaid dollar sent to an MCO:

## PASSPORT

Passport has operated with less than a 1% margin over our 20-year history.



PASSPORT PUTS MORE TOWARD MEDICAL CARE

## FOR-PROFIT MCOs



FOR-PROFIT MCOs PAID NEARLY \$1 BILLION TO SHAREHOLDERS IN 2017.

**PASSPORT**  
HEALTH ★ PLAN 

# Passport Health Plan: Clinical Program Engagement

Year To Date As of 12/1/2018

Program	Assessed/Identified <sup>1</sup>	Engagement Rate <sup>2</sup>	Cost Avoidance (per member)	Potential Savings
<b>Catastrophic Care</b>	324/716	45%	\$2,178	\$705,672
<b>Complex Care</b>	1,700/3,638	47%	\$6,525	\$11,092,500
<b>Condition Care</b>	1,075/3,123	34%	\$405	\$435,375
<b>Transition Care</b>	316/535	59%	\$3,709	\$1,172,044
<b>Total:</b>				<b>\$13,405,591</b>

1 Data from Identifi Engagement waterfall for dates 01.01.2018 through 11.30.2018; N= number of cases with completed/submitted assessment; D= total number of cases identified for the program.

2 N= Number of cases with completed/submitted assessment; D= total number of cases identified for the program

# The Passport Difference: Value Added Programs

## Foster Care: Intensive Care Management Pilot Program

- 60 high risk children between 4 – 17.5 years of age, three or more placements in 24 months.
- Focused on a team decision-making structure that promoted youth and family choice.
- Participants increased their placement with natural or adoptive families compared to pre-intervention placements and decreased institutional settings for services.
- Total managed care costs for the youth in the nine months post-intervention were greatly reduced compared to pre-intervention.
- Dr. Liz McKune, VP of Health Integration was lead on this pilot.

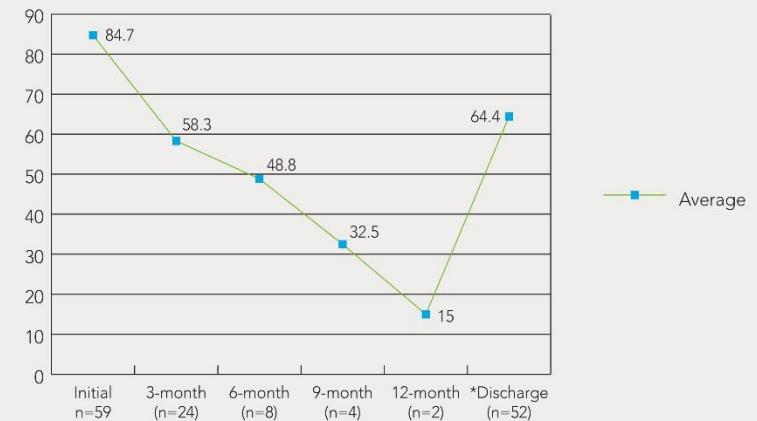
Table 2

Total Cost of Care



Table 6

CAFAS Total Score Over Time





# Kentucky State Police Grant for Fentanyl Protection

Passport provided a \$25,000 grant to the Kentucky State Police (KSP) Foundation, to purchase fentanyl response kits that will help KSP troopers avoid contact with dangerous drugs.



At Passport, our mission is to improve the health and quality of life of all Kentuckians. With this donation we hope that we can help all the brave troopers . . . We consider this call to action our contribution to the thin gray line.”

- Carl Felix, Chief Operating Officer

# Operation Bobcat Partnership with DLG



Passport community engagement representatives logged over 250 hours in a resource center hosted by the Department of Local Government in Estill, Owsley, Breathitt, and Lee Counties over an eight day period.

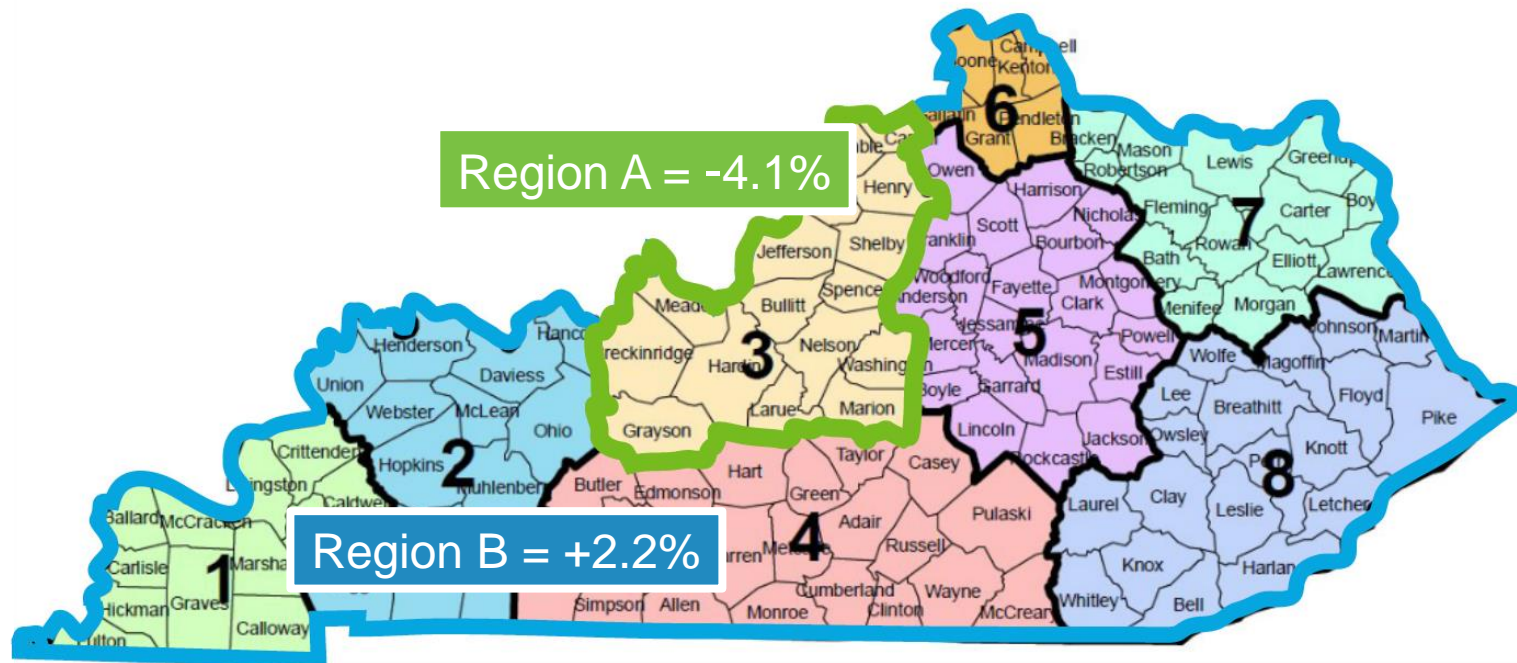


# Passport Health Plan: Historical Rate Changes

	Traditional	Expansion
Jul – 2010	-0.03%	
Jul – 2011	-1.61%	
Jul – 2012	3.00%	
Jan – 2013	-1.05%	
Jul – 2014	2.43%	
Jul – 2015	0.06%	-7.19%
Jul – 2016	-3.68%	-7.11%
Jan – 2017	5.39%	4.30%
Jul – 2017	2.33%	2.99%
Jan – 2018	-0.41%	-0.36%
Jul – 2018	-2.45%	-3.72%

# Rate Development Overview

- Rates were consolidated to two ratings regions
  - Rating Region A: Region 3
  - Rating Region B: Regions 1,2,4,5,6,7 and 8



PHP market share: Region A (65%) & Region B (11%)



# The Passport Difference: Working Together for a Healthier Kentucky

## Contact Information

- Mark Carter, Chief Executive Officer,  
mark.carter@passporthealthplan.com
- Carl Felix, VP & Chief Operating Officer,  
carl.felix@passporthealthplan.com
- Learn more at: <http://passporthealthplan.com/members/health-and-wellness-programs/>

# Questions

