



CHFS

KENTUCKY
Cabinet *for Health and*
Family Services

Overview

The Cabinet for Health & Family Services is the primary state agency responsible for protecting and promoting the well-being of Kentuckians through the delivery of health and human services. From birth (certificates) to death (certificates) and everything in between, someone in Kentucky utilizes a service provided by CHFS.

- CHFS is the largest cabinet in state government
- More than 400 locations
- 6,700 full-time employees and around 1,400+ contractors
- Employees located in all 120 Kentucky counties
- CHFS budget is \$14.4 billion – 33% of the total state operating budget of \$33.4 billion

Office of the Secretary

- Office of the Secretary
- Office of Legal Services
- Office of the Inspector General
- Office of Public Affairs
- Office of the Ombudsman and Administrative Review
- Office of Administrative Services
- Office of Application Technology Services
- Office of Finance and Budget
- Office of Legislative and Regulatory Affairs
- Office of Human Resource Management

Cabinet Agencies

- Department for Public Health
- Department for Medicaid Services
- Department for Community Based Services
- Department for Income Support
- Division of Family Resources & Youth Services Centers
- Serve Kentucky
- Department for Aging & Independent Living
- Office for Children with Special Health Care Needs
- Office of Health Data and Analytics
- Department for Behavioral Health, Developmental & Intellectual Disabilities

CHFS In Action: Major Initiatives

- Transforming Medicaid with Kentucky HEALTH 1115 waiver & 1915c waiver
- Child Welfare System Transformation to make Kentucky's foster & adoption programs the best in the nation
- Leading Kentucky's collaborative and strategic approach to combat our opioid/addiction crisis
- Public Health Transformation



Department for Community Based Services (DCBS)

Eric Clark, Commissioner

Major Areas of Focus/Opportunity

- Child welfare transformation
 - House Bill 1 implementation
 - Family First Prevention Services Act implementation
- Adult protective services
 - Investigate and provide protective services to individuals who are reported to be alleged victims of abuse, neglect, or exploitation pursuant to KRS 209
 - Services preserve a vulnerable adult's independence to the maximum degree possible, recognizing the inherent right to self-determination
 - Actively partner with investigative or prosecuting entities that have the responsibility to respond to the abuse, neglect, or exploitation of adults
- Child care
 - Provided child care subsidies for 26,428 families (47,675 children) in SFY19
 - Monitors and supports approximately 2,200 child care centers and family child care homes
 - Provide professional development supports and background checks for 40,631 child care workers since February 2018
- Public assistance
 - Improvements in program integrity and accuracy
 - Enhanced workforce development and supports through human-centered design



DCBS Service Populations

Total Kentucky Population: 4.5 million

**Kentucky Families:
1.75 million**

**Kentucky Children:
1 million**

**Kentucky
families in
poverty:
813,000**

**Households
receiving
SNAP:
233,300**

**Families on
KTAP:
14,252**

**Families
receiving
child care
subsidy:
26,428**

**Children on
KTAP:
26,911**

**Children in
out-of-
home care:
9,660**

Programs/Grants Administered

- Supplemental Nutrition Assistance Program or SNAP (formerly known as the Food Stamp Program)
- State Supplementation Program for persons who are aged, blind or have a disability
- Temporary Assistance for Needy Family Block Grant (K-TAP, KY Works, supportive services);
- Child Care Assistance Program
- Low Income Home Energy Assistance Program (LIHEAP)
- Promoting Safe and Stable Families
- Child maltreatment prevention
- Child protective services
- Foster care and public agency adoption
- Chafee Foster Care Independence Program and Educational and Training Voucher
- Community Based Child Abuse Prevention Grant
- Child Abuse Prevention and Treatment Basic State Grant
- Social Services Block Grant
- Community Services Block Grant and standards for Kentucky's Community Action Network
- Family Violence Prevention and Services Grant and regulation of state-funded domestic violence shelters
- Adult protective services, general adult services, and alternate care services
- Designation of the state rape crisis centers and children's advocacy centers
- Regulation of day care, private child care, and domestic violence batterer intervention providers
- Eligibility determinations for Medicaid and health insurance affordability options
- Child care provider professional development and quality-rating system
- Children's Justice Act Grant



Department for Medicaid Services (DMS)

Carol Steckel, Commissioner

Kentucky Medicaid at a Glance

- Approximately 1,385,788 eligibles (SFY2019 monthly average)
 - 88,928 children covered under KCHIP
 - 452,183 covered under Medicaid expansion (ACA)
 - 844,677 covered under traditional (Non-ACA)
 - 90.64% of total eligibles are enrolled in managed care (approximately 1,256,038)
- Over 46,000 enrolled providers-
Approximately 92% of Kentucky's providers are enrolled with the Department for Medicaid Services (DMS).
- \$10.64 billion in total SFY2019 expenditures (administrative and benefits combined)

Department for Medicaid Services

- **Division of Community Alternatives**
Administers 6 HCBS 1915(c) waivers (SCL, Michelle P., HCB, Model Waiver II, and ABIs)
- **Division of Fiscal Management**
Administers the Medicaid budget
- **Division of Policy & Operations**
Administers eligibility, enrollment, and specific DMS initiatives
- **Division of Program Integrity**
Conducts provider enrollment, audits, and investigations for fraud, waste, and abuse
- **Division of Program Quality & Outcomes**
Provides oversight of the MCOs and MCO contracts

Medicaid Ongoing Initiatives

- 1115 Waiver-Kentucky HEALTH
- 1915c Home and Community Based Waivers Redesign
- Development and implementation of a Medicaid Enterprise Management System (MEMS)
- Partner portal for provider online enrollment and maintenance
- Electronic Visit Verification—mandated by federal law (21st Century Cures Act)
- CHIP—Reauthorization of grant

1115 Waiver

Kentucky HEALTH Goals

Helping to Engage and Achieve Long Term Health

- Improve health outcomes while ensuring fiscal sustainability for the program
- Engage beneficiaries in their healthcare
- Connect beneficiaries to robust resources to facilitate health and economic independence
- Implement delivery system reforms to improve quality and outcomes



Department for Behavioral Health, Developmental and Intellectual Disabilities (BHDID)

Wendy Morris, Commissioner

Department Overview

- BHDID administers state and federally funded mental health, substance use disorder, developmental and intellectual disability programs and services throughout the commonwealth.
- Mission: To provide leadership, in partnership with others, prevent disability, build resilience in individuals and their communities, and facilitate recovery for people whose lives have been affected by mental illness, substance abuse, intellectual disability, or developmental disability.

Central Office

Hospitals:

- Appalachian Regional Healthcare
- Central State Hospital
- Eastern State Hospital
- Kentucky Correctional Psychiatric Center
- Western State Hospital

Specialty Clinics:

- Hazelwood Specialty Clinic
- Lee Specialty Clinic
- Oakwood Specialty Clinic

Community-Based Residential Substance Abuse Programs:

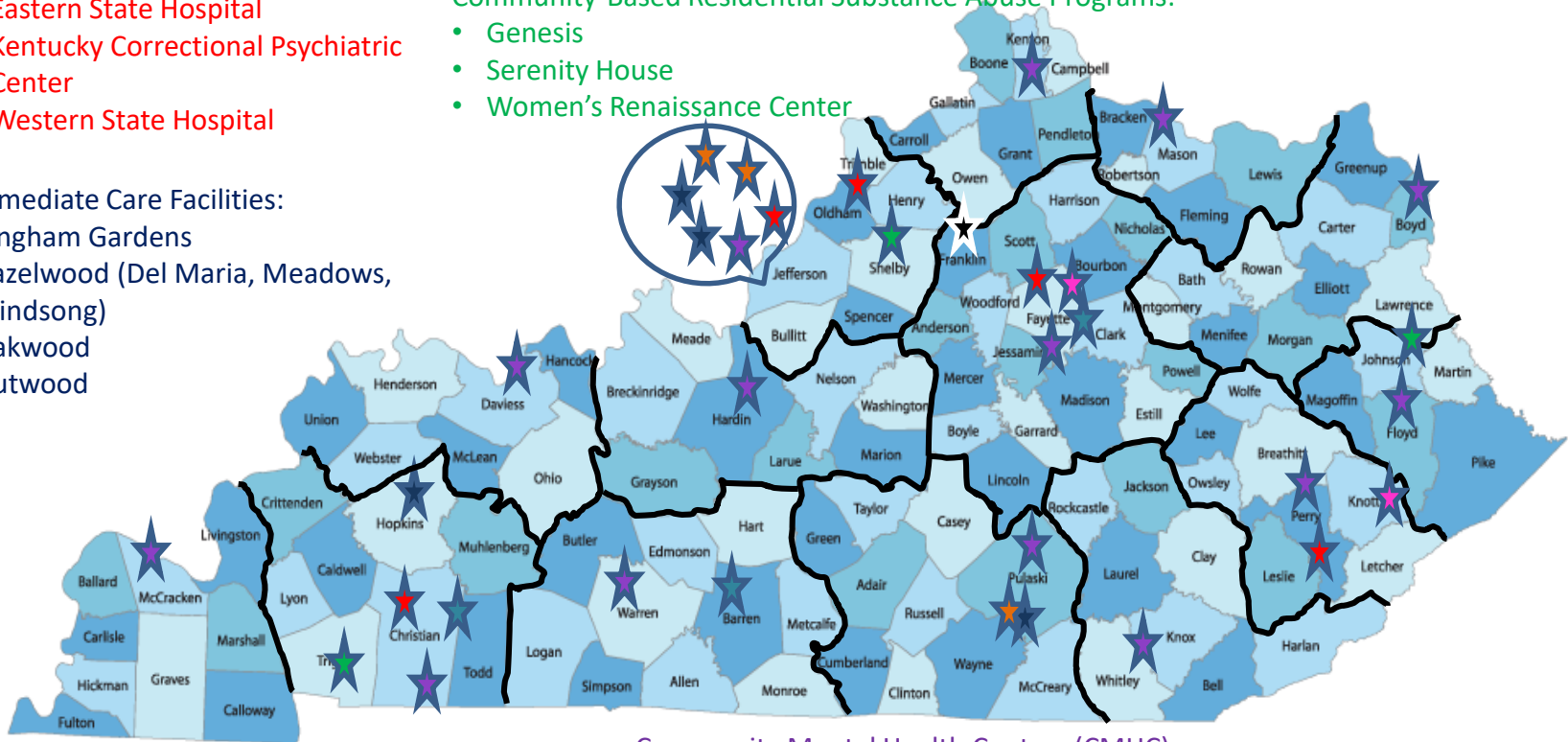
- Genesis
- Serenity House
- Women's Renaissance Center

Personal Care Homes

- Central Kentucky Recovery Center

Intermediate Care Facilities:

- Bingham Gardens
- Hazelwood (Del Maria, Meadows, Windsong)
- Oakwood
- Outwood



Long Term Care:

- Glasgow State Nursing Facility (GSNF)
- Western State Nursing Facility (WSNF)

Community Mental Health Centers (CMHC)

- Adanta
- New Vista/Bluegrass
- Communicare
- Comprehend, Inc.
- Cumberland River
- Four Rivers Behavioral Health
- Kentucky River Community Care
- Lifeskills
- Mountain Comprehensive Care
- NorthKey
- Pathways
- Pennyroyal Regional Center
- RiverValley Behavioral Health
- Seven Counties Services

Preserve and Enhance the Behavioral Health Safety Network

- Supporting implementation of evidence-based behavioral health practices for adults and children through funding, technical assistance, and performance based contracts
- Ensuring access to meaningful, trauma-informed services for at-risk and underserved populations
- Promoting efforts to decriminalize mental illness by diverting and transitioning people from criminal justice system and into treatment
- Reducing state's reliance on institutions (e.g., lead agency transitioning adults with serious mental illness currently residing in personal care homes to the community with appropriate supports in response to Settlement Agreement with P & A)
- Building developmentally-appropriate services and supports for transition-age youth (e.g., TAYLRD grant and KY Employment Partnership for Youth with Significant Disabilities)
- Creating health promotion programming for individuals with mobility limitations and intellectual disabilities (e.g., Project CHEER)

Expand the Recovery-Oriented System of Care to Address the Opioid Crisis

- Leading CHFS opioid response utilizing federal SAMHSA funds and state funding
- Facilitating training and educational opportunities to promote implementation of evidence-based practices, including medication-assisted treatment
- Expanding access to a continuum of high-quality, evidence-based care from prevention to treatment to recovery support services
- Increasing services and supports for pregnant and parenting women with substance use disorders, persons who have experienced an overdose, and children, youth, and families impacted by opioid use disorder
- Partnering with Justice and Public Safety Cabinet to divert and transition individuals with substance use disorders involved with the criminal and juvenile justice systems to treatment and recovery supports



Department for Public Health

Dr. Angela T. Dearing, Commissioner

Divisions

- Administration and Financial Management
- Epidemiology and Health Planning
- Laboratory Services
- Maternal and Child Health
- Public Health Protection and Safety
- Prevention and Quality Improvement
- Women's Health

Programs and Services

Infectious Diseases (HIV/AIDS, STD, TB, Hepatitis)	Cancer Programs (Colon, Breast and Cervical, Lung)	Women, Infants and Children (WIC) Food and Nutrition	Newborn Screenings
Emergency Preparedness	HANDS In-home Parenting	Family Planning	Adolescent Health
Breastfeeding	Immunizations	Tobacco Cessation	Oral Health
Radiation Safety	Lead	Rabies	Vital Statistics
Onsite Sewage Inspections	Swimming Pool Inspections	Food Manufacturing Inspections	Milk Producing Facility Insp.
School, Hotel and Restaurant Inspections	Prescription Drug Assistance	Chronic Diseases (Asthma, Diabetes, Arthritis, Obesity, Heart/Stroke, COPD)	Substance Abuse and Harm Reduction
Local Health Personnel	Bio and Chemical Terrorism Testing	J-1 Visa and Healthcare Shortage	Early Childhood Development



Department for Aging and Independent Living

Shannon Gadd, Commissioner

Programs and Services

Populations Served – Older adults, adults with physical disabilities, and individuals under state guardianship

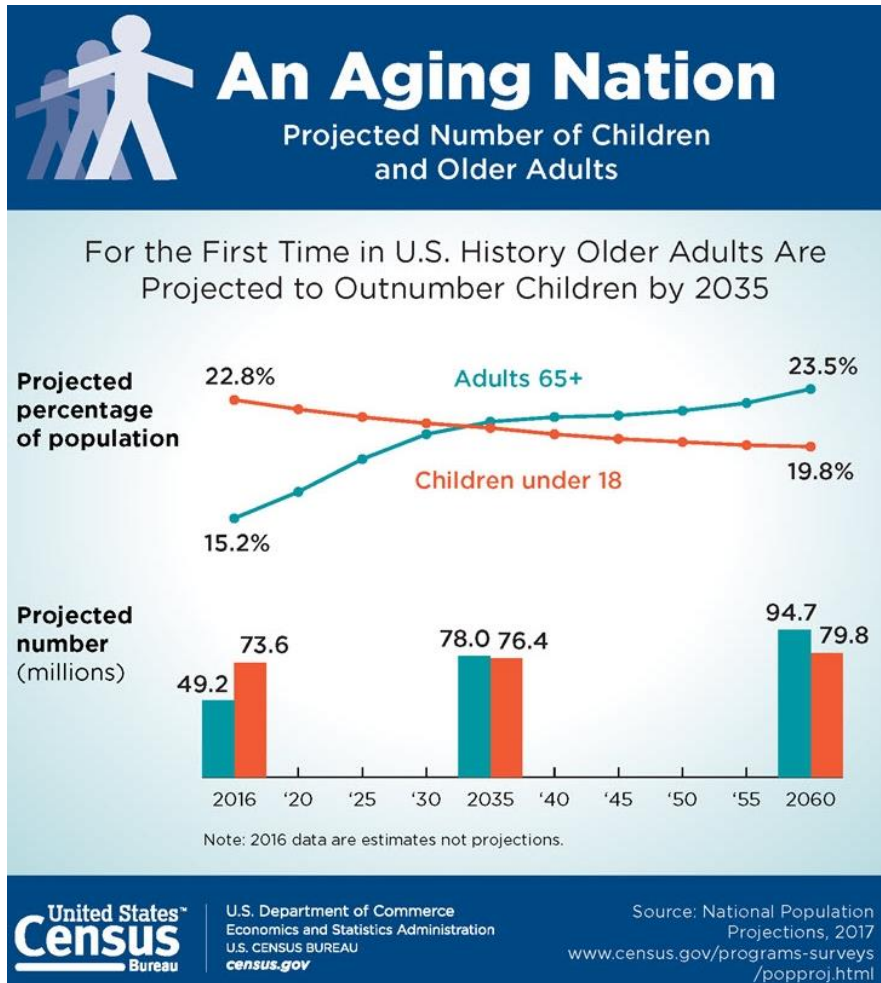
Federally Funded

- Aging and Disability Resource Center
- Caregiver Support Services
- Health Promotion and Disease Prevention
- Long-Term Care Ombudsman
- Legal Assistance
- Congregate and Home-Delivered Nutrition
- Senior Community Service Employment Program
- State Health Insurance Assistance Program
- In-home services

State Funded

- Assisted Living Certification
- Hart-Supported Living
- Homecare Program
- Personal Care Attendant Program
- KY Caregiver
- State Guardianship
- Traumatic Brain Injury Trust Fund
- Traumatic Brain Injury Behavioral Program

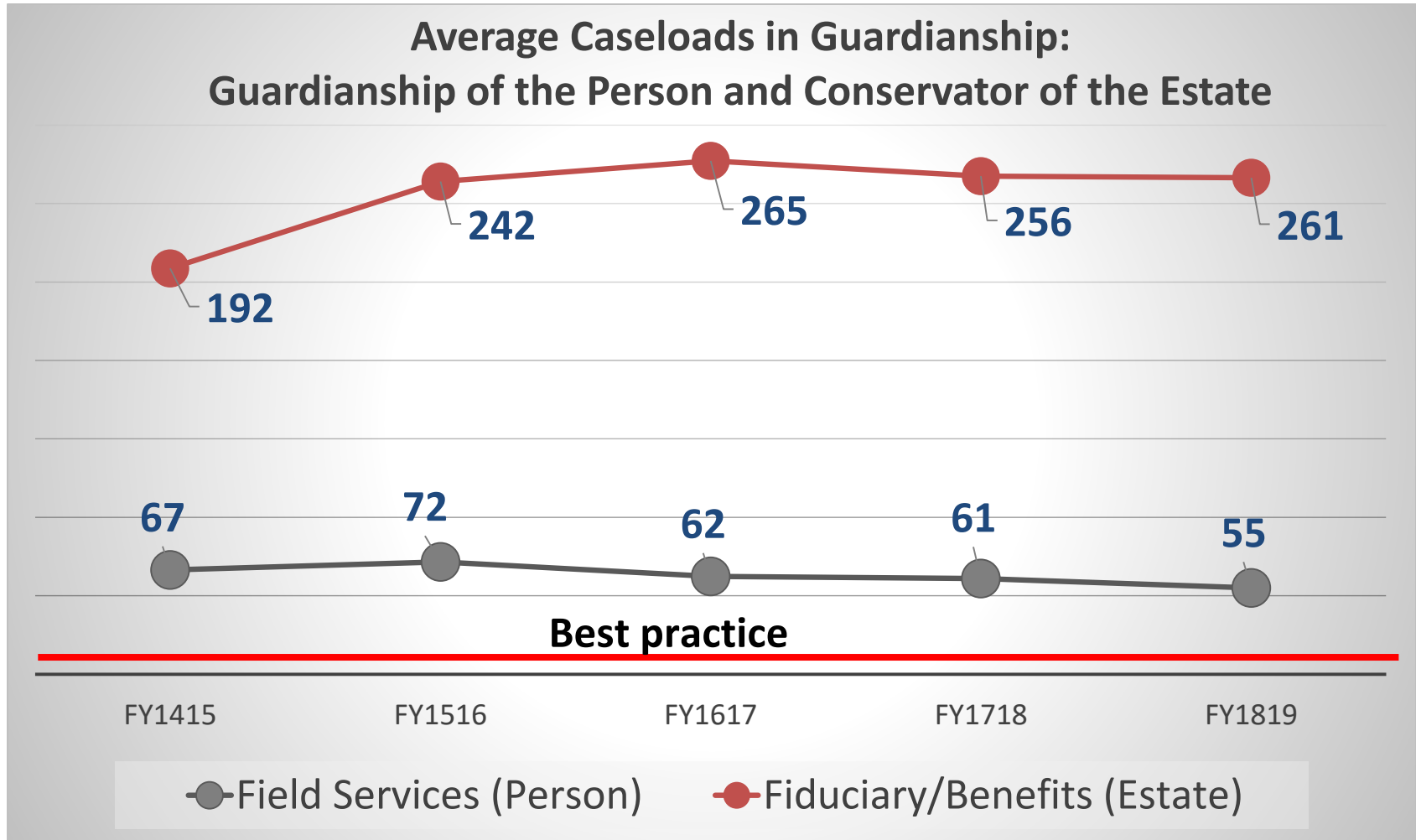
Current Issues: Aging and Independent Living



United Health Rankings Senior Report 2018: Kentucky

Overall Health Ranking	49 th
Preventable Hospitalizations	50 th
Frequent Mental Distress	49 th
Physical Inactivity	49 th
Smoking	49 th
Community Support	47 th
Home Delivered Meals	46 th

Current Issues: State Guardianship





INVESTIGATION

OFFICE OF INSPECTOR GENERAL

Steven D. Davis, Inspector General

Functions

- Licenses and regulates:
 - Health facilities and health services, including long-term care facilities
 - Child care providers
 - Child adoption/placement agencies
- Serves as the State Survey Agency (SSA) under contractual agreement with the Centers for Medicare and Medicaid Services (CMS) to monitor health facilities that participate in Medicare and/or Medicaid
- Administers the certificate of need (CON) program

Functions

- Investigates:
Fraud, waste, abuse, mismanagement, or misconduct by CHFS clients, employees, vendors, providers, and contractors
- Operates the Kentucky All Schedule Prescription Electronic Reporting (KASPER) Program and enforces applicable laws
- Houses the Kentucky National Background Check Program (NBCP) which utilizes the “KARES” system to facilitate fingerprint-supported state and national background checks on behalf of applicants seeking employment with certain providers licensed/regulated by CHFS



Office of Health Data and Analytics

Robert Putt, Executive Director

CHFS Privacy Program

The privacy program was created to develop, implement, and maintain policies and procedures to meet privacy requirements in compliance with federal and state laws, and manage privacy risks.

Kentucky Telehealth Program

Telehealth Services provides oversight and direction to telehealth providers implementing telehealth services by developing standards, guidelines, resources, and education to help expand telehealth adoption and increase access to healthcare services.

Division of Health Benefit Exchange

The Kentucky Health Benefit Exchange provides support and resources for Kentuckians to enroll in health coverage, learn what financial assistance they may be eligible for, and connect them to resources in their communities (assisters) who can help complete applications and/or find affordable, quality health coverage including qualified health plans or Medicaid coverage.

Division of Health Information

- Kentucky Health Information Exchange (KHIE) facilitates access to and retrieval of clinical data at the point of patient care to provide safe, timely, efficient, effective, equitable, patient-centered care in alignment with the CHFS mission.
- KHIE is a network of more than 100 hospitals and 2,500 ambulatory healthcare locations, representing 5,600 data feeds.
- Offers Event Notifications, Kentucky All Schedule Prescription Electronic Reporting (KASPER) integration, immunization query, and a customizable health record.
- KHIE is the data intermediary for public health reporting.

Division of Analytics

- Coordinates data analytic initiatives of agencies within the CHFS that regulate health care and social services
- Ensures policy is consistent with the long-term goals across the commonwealth
- Identifies best practices, conducts cabinet project and data governance, and performs comprehensive cross-cabinet need assessments

The consolidation of the oversight of policy and research matters of healthcare and social services allow the commonwealth to be more readily able to address systemic drivers impacting these program areas for its citizens.



Office for Children with Special Health Care Needs

Shellie A. May, BSN, Executive Director

Functions/Services

- Provides comprehensive care to children and youth with special health care needs (CYSHCN) who:
 - Are Kentucky residents
 - Are younger than 21 years of age
 - Meet medical eligibility
 - Meet financial eligibility
- One stop service for children with complex health needs
- Access to teams of medical specialists, RN care coordinators, social workers, therapists, nutritionists, and hearing experts who see patients in multidisciplinary setting
- Fill the gaps in services for CYSHCN
- Has 11 offices and 6 satellite locations throughout Kentucky

Office for Children with Special Health Care Needs

Locations & Services

Services provided at eleven regional offices & six satellite locations:

- Specialty medical clinics
- Financial assistance
- First-Steps (Louisville)
- Audiology
- Therapy services:
 - Physical
 - Occupational
 - Speech
 - Dietician





Department for Income Support

W. Bryan Hubbard, Commissioner

Disability Determination Services

The Disability Determination Services (DDS) program determines medical eligibility for residents of Kentucky who apply for Social Security or SSI Disability benefits. The criteria for eligibility is set by the Social Security Administration (SSA). SSA contracts with states to administer the determinations process.

Child Support Enforcement

The Child Support Enforcement program establishes paternity, child and medical support, modifies support obligations, and enforces and collects child and medical support for individuals who request child support services or are receiving public assistance.



Division of Family Resource and Youth Services Centers (FRYSC)

Melissa Goins, Executive Director

FRYSC

Mission Statement

To enhance students' ability to succeed in school by developing and sustaining partnerships that promote:

- Early learning and successful transition to school;
- Academic achievement and well-being; and
- Graduation and transition into adult life.

FRYSC

- Provides administrative support, technical assistance and training to local school-based Family Resource and Youth Services Centers (FRYSC).
- Each FRYSC center:
 - Strives to remove non-academic barriers to learning as a means to enhance student academic success;
 - Offers a unique blend of programs and services determined by the needs of the population being served, available resources, location and other local characteristics.



Serve Kentucky

Joe Bringardner, Executive Director

Serve Kentucky

Mission Statement

To engage Kentuckians in volunteerism and service to positively impact our communities.

Serve Kentucky

National Service in Kentucky

- 900 local service sites
- 6,400 SeniorCorps & AmeriCorps members
- \$29.2 million CNCS and local funding
- \$47.4 million AmeriCorps scholarships earned since 1994



For assistance with legislative or regulatory affairs, please contact:

Jim Musser, Executive Director of OLRA

(502) 564-7042, ext. 3420

Jim.Musser@ky.gov