



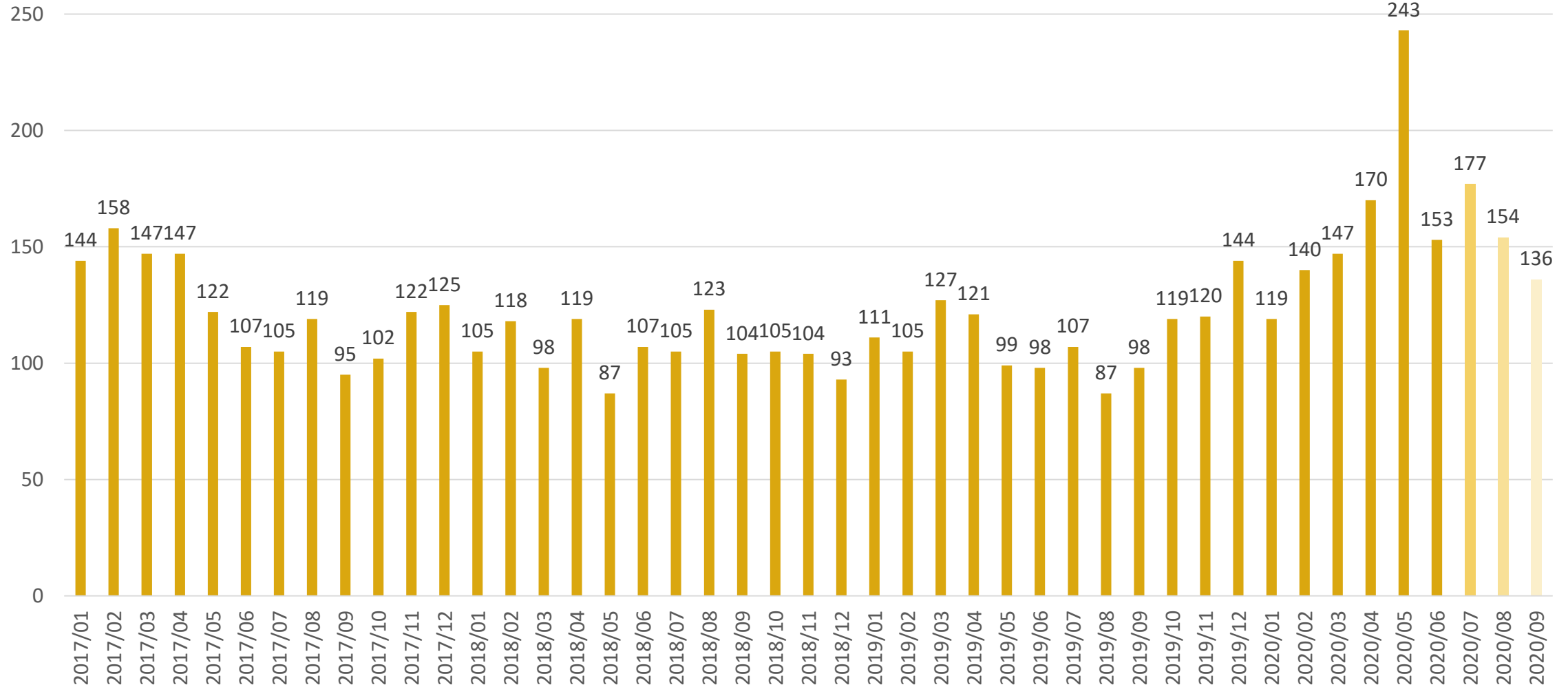
Van Ingram

Executive Director, Office of Drug Control Policy

Drug Overdose Deaths
Health & Welfare Committee
December 15, 2020

Kentucky Resident Drug Overdose Deaths, January 2017 to September 2020

(Data as of November 17, 2020; Data are provisional; Data for July - September 2020 are incomplete)

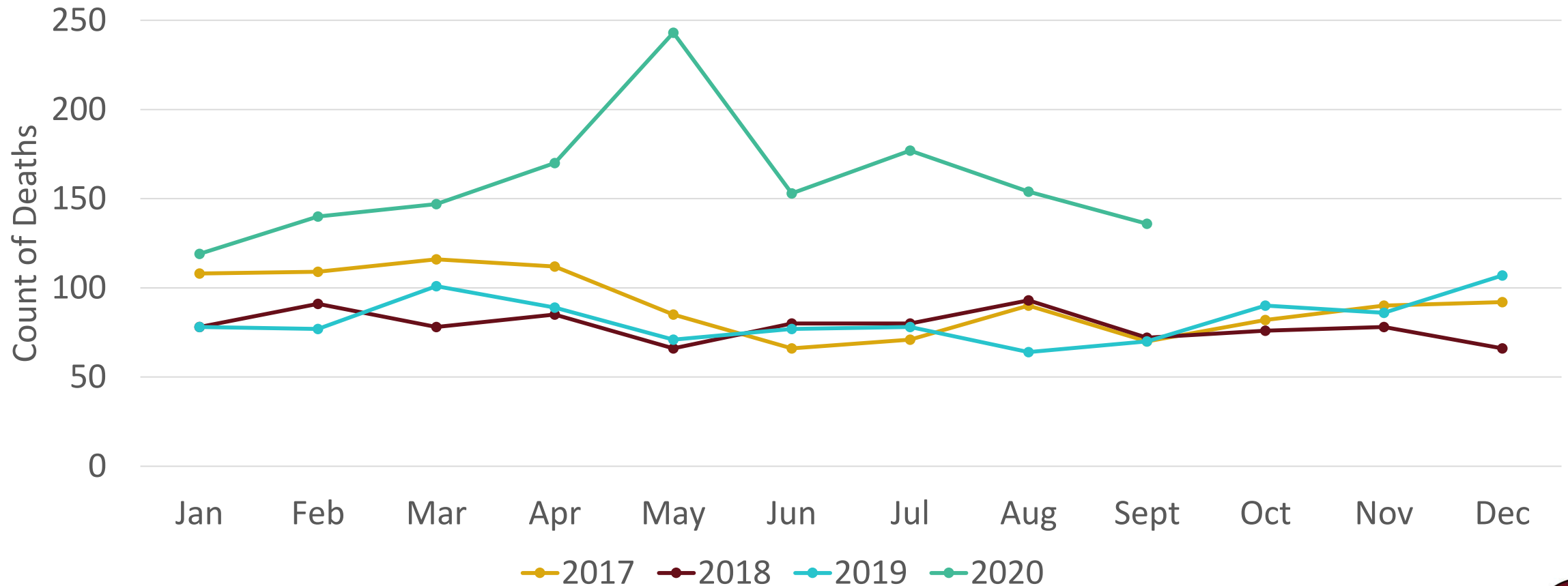


Source: KY Office of Vital Statistics. Data as October 26, 2020. Data are provisional and subject to change. Produced by the Kentucky Injury Prevention and Research Center, University of Kentucky.



Kentucky Residents Drug Overdose Deaths, January 2017- September 2020

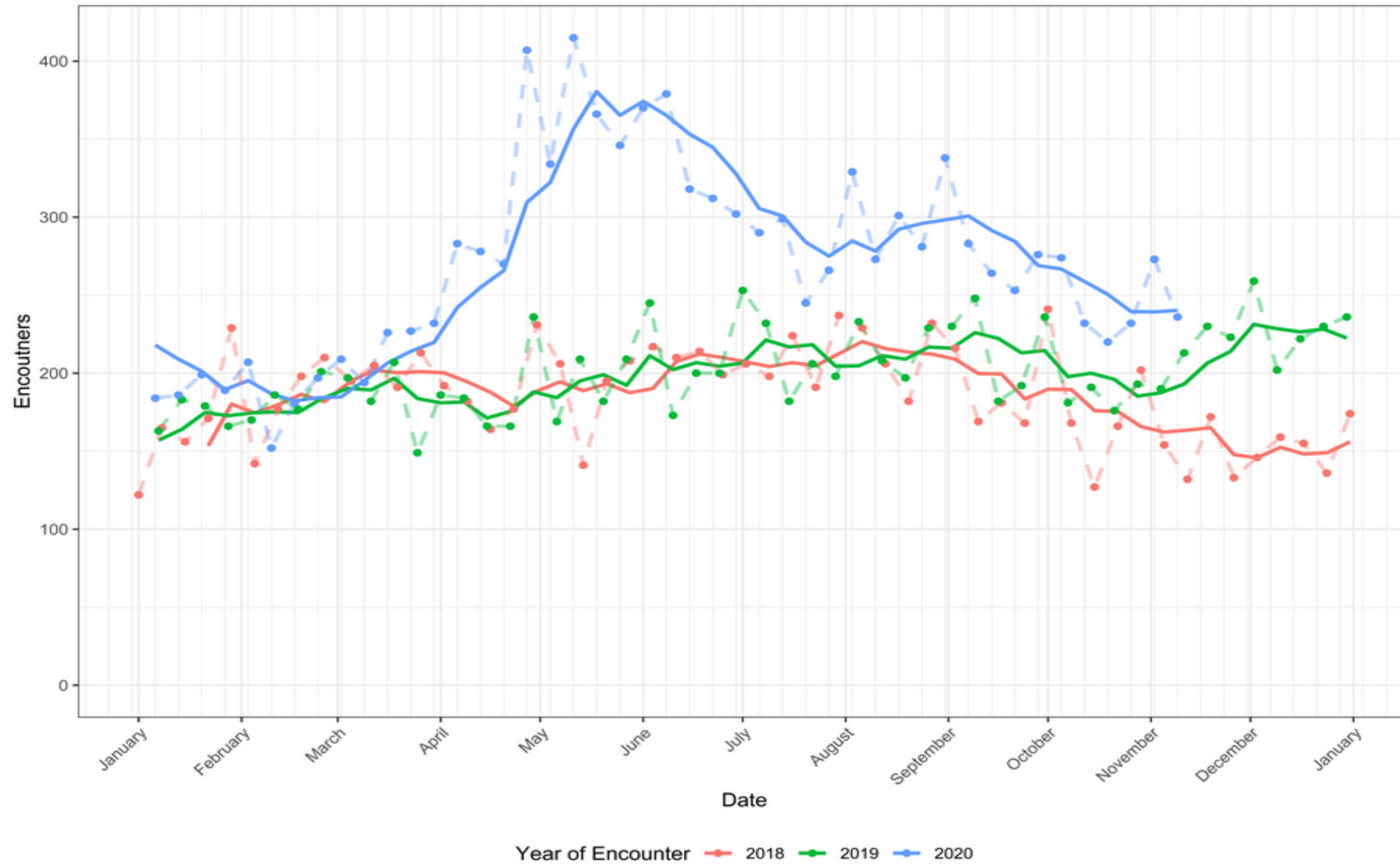
(Data as of November 17, 2020; Data for 2017-2020 are provisional; Data are incomplete for July to September 2020)



Source: KY Office of Vital Statistics. Data as October 26, 2020. Data are provisional and subject to change. Produced by the Kentucky Injury Prevention and Research Center, University of Kentucky.



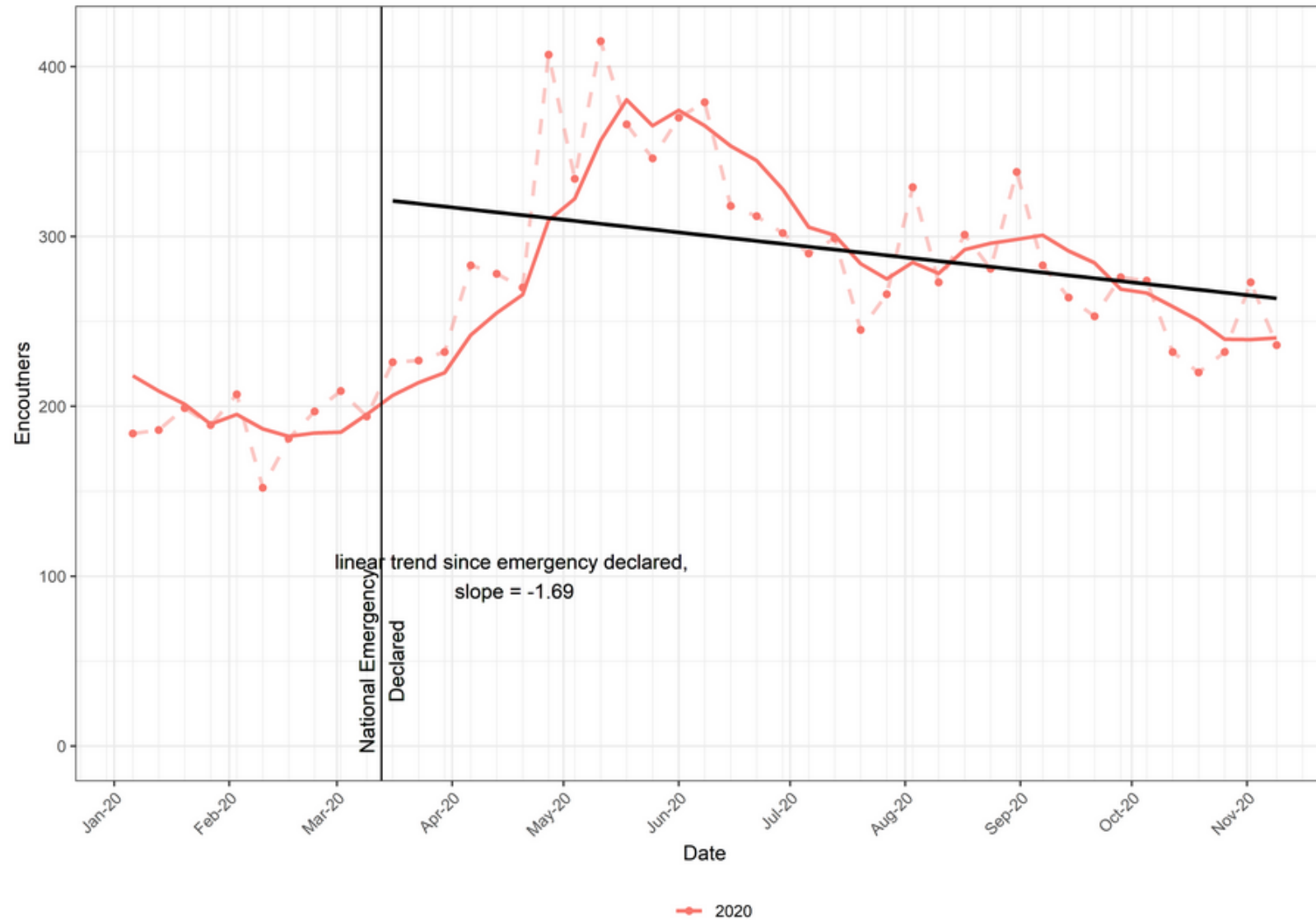
EMS Opioid Overdoses Related Encounters, Aggregated by Week,
2018-2020 (current)



Solid lines represent 4-week rolling average of Opioid Overdose EMS Encounters.
Points and dashed lines represent raw counts of records.



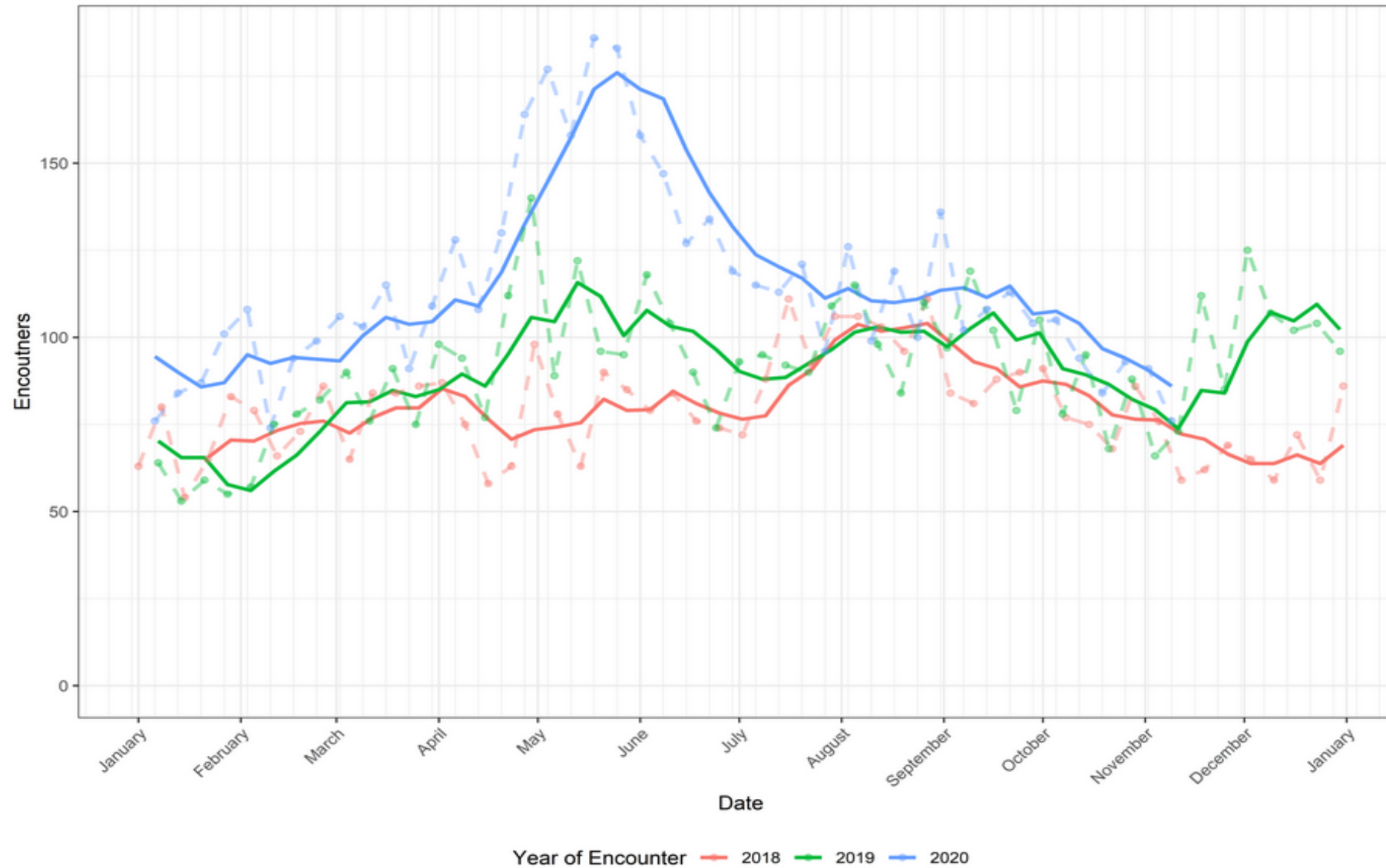
EMS Opioid Overdoses Aggregated by Week 2020-Current, with Linear Trend



Solid lines represent 4-week rolling average of Opioid Overdose EMS Encounters.
Points and dashed lines represent raw counts of records.
Simple linear trend represents average change per week since the National Emergency Declaration.



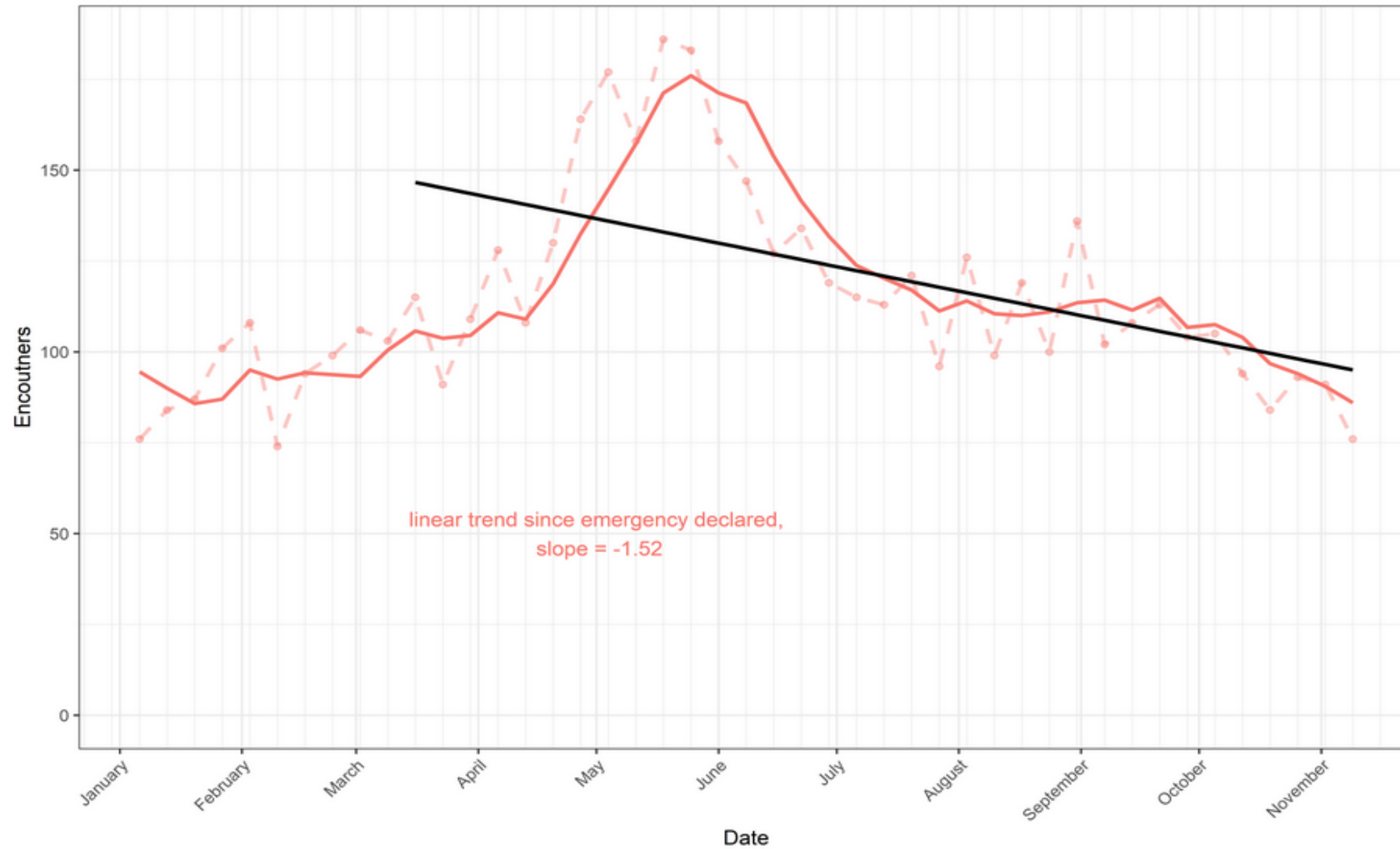
SyS Opioid Overdoses Related Encounters, Aggregated by Week, Limited Hospitals*



Solid lines represent 4-week rolling average of Opioid Overdose SyS Encounters.
 Points and dashed lines represent raw counts of records.
 *Hospitals limited to those facilities connected in January 2020; new facilities onboarding influence counts.



SyS Opioid Overdoses Related Encounters, Aggregated by Week, Limited Hospitals*



linear trend since emergency declared,
slope = -1.52

Year of Encounter 2020

Solid lines represent 4-week rolling average of Opioid Overdose SyS Encounters.
Points and dashed lines represent raw counts of records.

*Hospitals limited to those facilities connected in January 2020; new facilities onboarding influence counts.

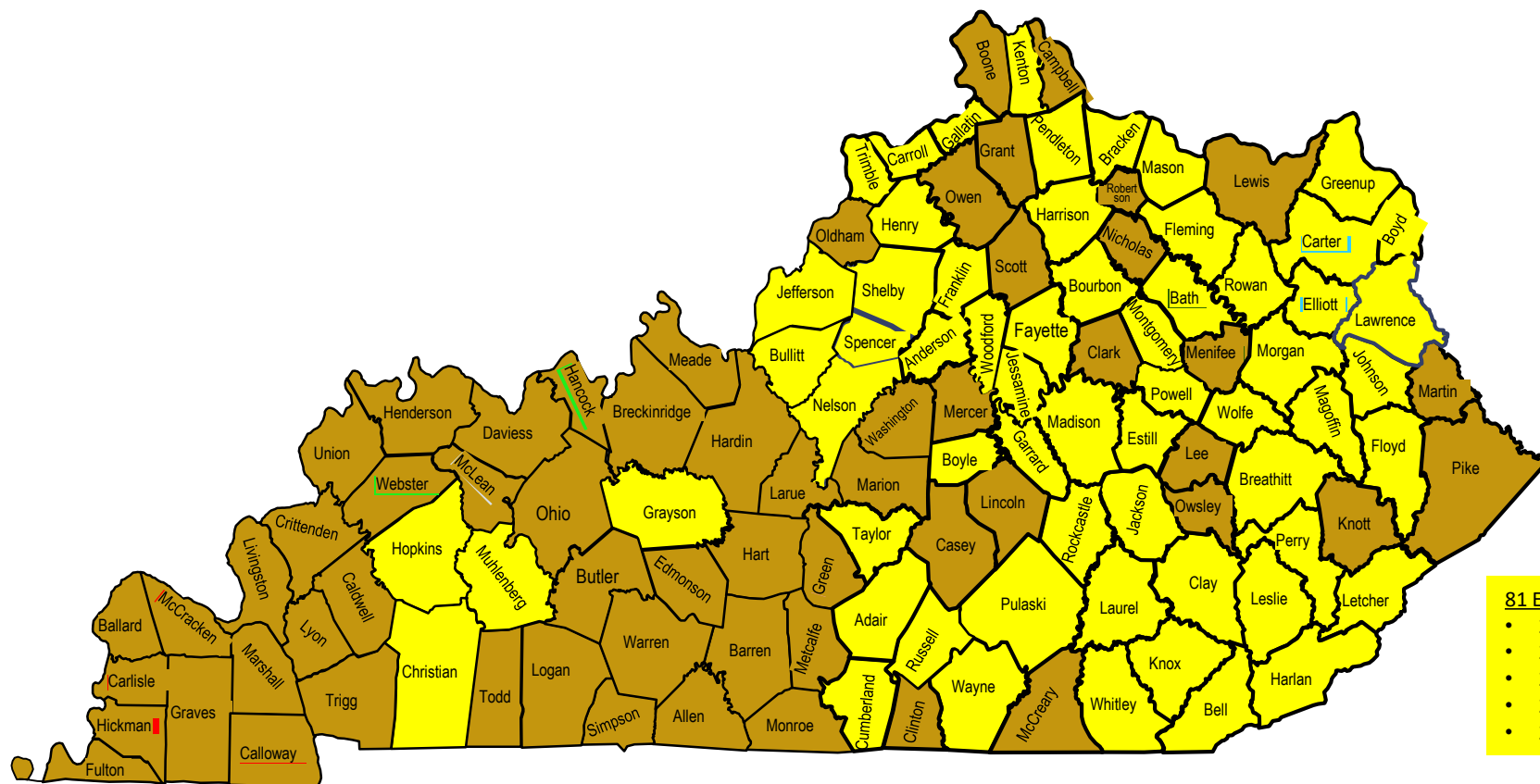




Kentucky Department of Public Health

Kentucky Pharmacists Association

November 18, 2016 – November 10, 2020



81 Events in 61 Counties

- 2016 – 02
- 2017 – 28
- 2018 – 21
- 2019 – 21
- 2020 - 9



Removing the Barriers

KY HELP
Call Center

1-833-8KY-HELP
(1-833-859-4357)



Major Treatment Projects

- Treatment Stipend Program
- Bridge Clinics
- Quick Response teams
- KSP Angel Program
- Strategic Initiative for Transformational Employment (SITE)
- Kentucky Chamber Foundation Project
- DOC Hiring Specialists



Supporting Recovery Housing

- Grants for Transitional Housing (MOUD supportive)
- Oxford House Model
- CMHC grants for Sober Living
- NAS grants to support transitional housing



Prevention





KENTUCKY JUSTICE &
PUBLIC SAFETY CABINET

Van Ingram

Executive Director

Kentucky Office of Drug Control Policy

125 Holmes Street

Frankfort, KY 40601

Office: 502.564.8291

Cell: 502.229.7171

Keep up with ODCP:

www.odcp.ky.gov

www.facebook.com/kydrugcontrol/

<https://findhelpnowky.com/>

833.8KY-HELP or text HOPE to 96714

