

Perinatal Care in Kentucky

Connie Gayle White, MD, MS, FACOG
Deputy Commissioner of Clinical Affairs

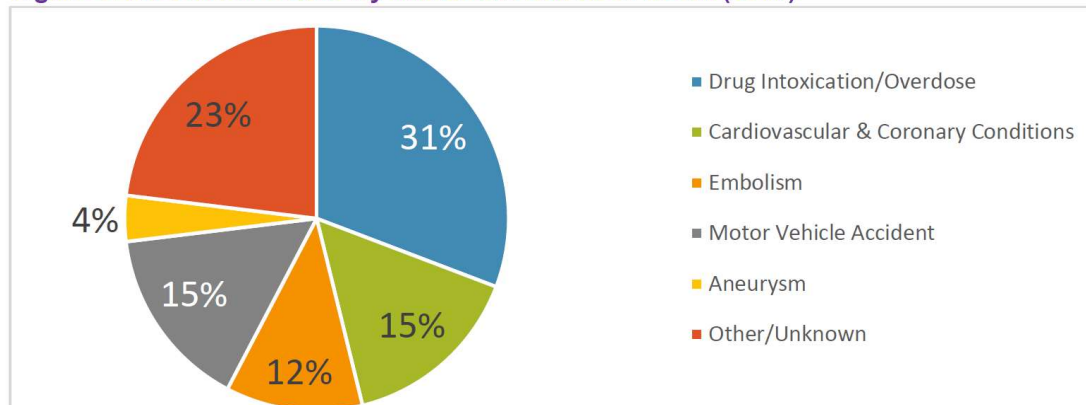
June 16, 2021

Interim Joint Committee of Health, Welfare, and Family Services



Preliminary Data from the Maternal Mortality Review Committee- 2017 Deaths

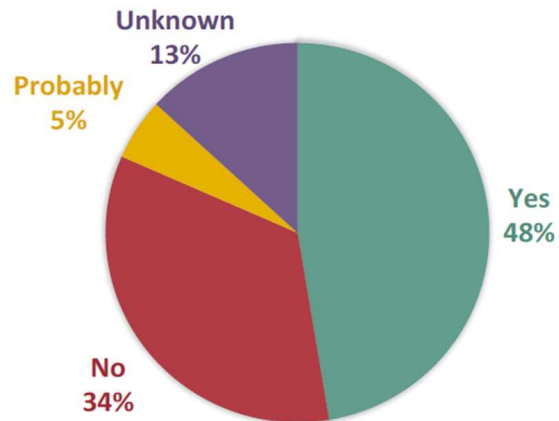
Figure 9: Percent of Deaths by Immediate Cause of Death (2017)



Data Source: Kentucky maternal mortality review committee decision form 2017

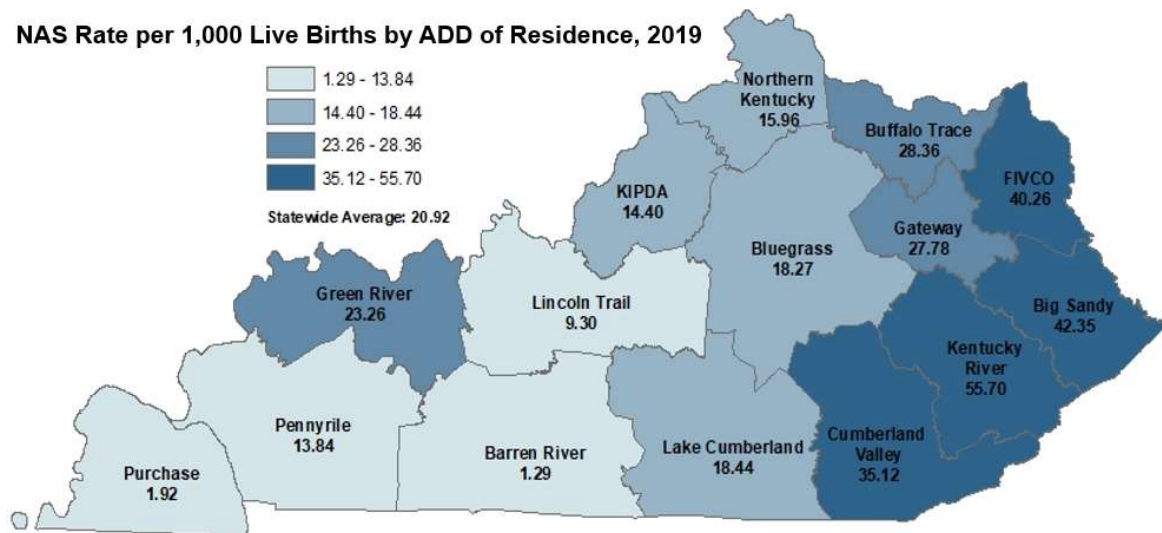
Substance Use Disorder (SUD) and Maternal Mortality in Kentucky-2018

Substance Use Contributing to Death



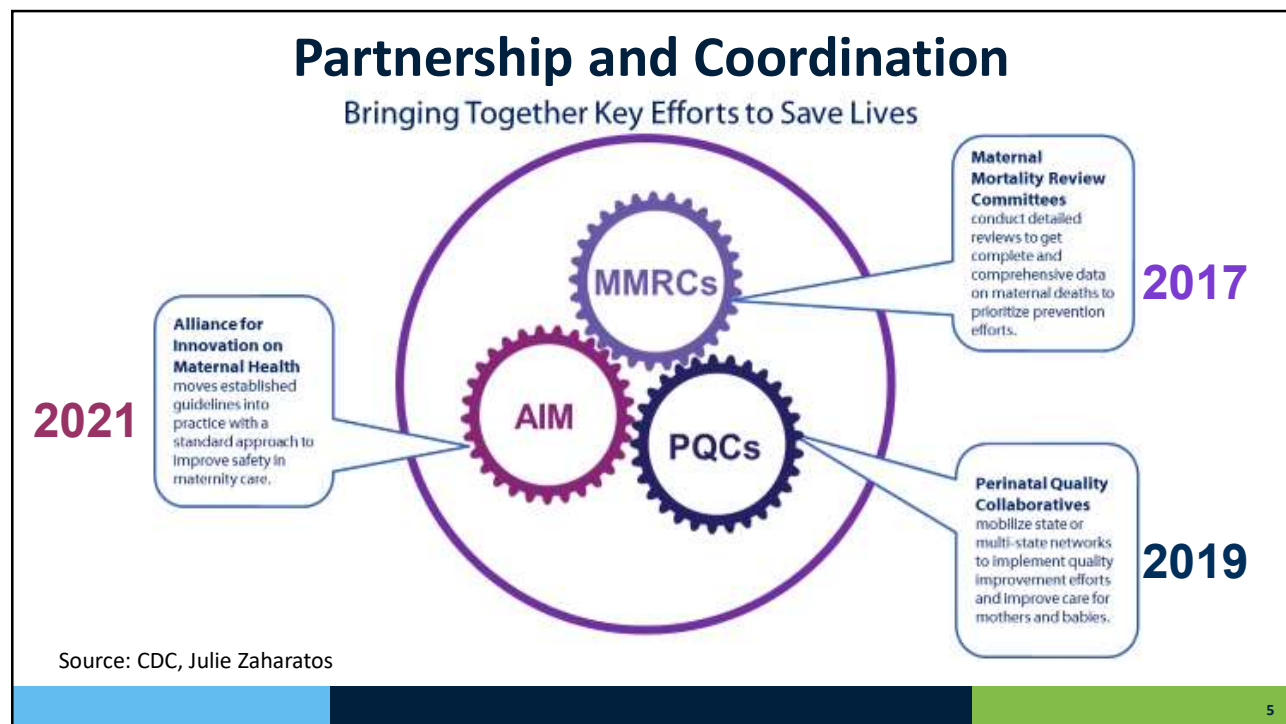
3

NAS Rate per 1,000 Live Births by ADD of Residence, 2019



September 3, 2020
 Data Source: Neonatal Abstinence Syndrome Reporting Registry; Kentucky Certificate of Live Birth.
 Shapefiles from Kentucky Geography Network.
 Mapped by Emily Ferrell, MPH, CPH

4



5

Members of the Kentucky MMRC

- OBs and MFMs across Kentucky
- Neonatologists
- Chief Medical Examiner
- Kentucky State Police
- DCBS-Adult Protective Services
- DBHDID-Behavioral Health Provider
- ACOG representative
- AAP representative
- AWHONN representative
- Human Trafficking Expert
- Domestic Violence Advocate
- Certified Nurse Midwife
- OB Anesthesia
- Women's Cardiologist
- Medicaid Services
- DPH Staff**
- MCH Epidemiologists
- MCH Prenatal Program Nurse and Nurse Abstractor
- MCH Division Director
- DPH Deputy Commissioner

6

Kentucky OMNI

Opioid Use, Maternal Outcomes, and Neonatal Abstinence Syndrome Initiative



- Department for Public Health (DPH) Commissioner's Office - CHFS*
- Maternal Child Health Division - DPH - CHFS
- Department for Behavioral Health, Developmental and Intellectual Disabilities - CHFS
- Department for Medicaid Services - CHFS
- Kentucky Hospital Association
- Kentucky Primary Care Association
- *Department for Community Based Services - CHFS*

*Cabinet for Health and Family Services

7

Background of the Kentucky Perinatal Quality Collaborative (KyPQC)

- Perinatal Quality Collaboratives describe statewide networks of stakeholders to improve the quality of care during pregnancy, delivery, and throughout the first year of life
- Housed at the Kentucky Department for Public Health (KDPH)
- The goal of the KyPQC is to reduce rates of maternal mortality and neonatal abstinence syndrome and improve maternal and infant health outcomes throughout the commonwealth



8



Founding members of the KyPQC



Kentucky Coalition of
Nurse Practitioners
& Nurse-Midwives



Kentucky
Hospital
Association



KPCA
KENTUCKY PRIMARY CARE
ASSOCIATION

9



March 1, 2021- Kentucky is an AIM State

AIM STRATEGIES



Broad Partnership



Tools & Technical Assistance



Implementation Training



Data Visualization



Build on Existing Initiatives



Incremental Bundle
Adoption

10

KyPQC vision statement:



***Working together to
make Kentucky a
great place for every
woman to have a
baby and a great
place for every baby
to be born!***

11

connie.white@ky.gov



12