

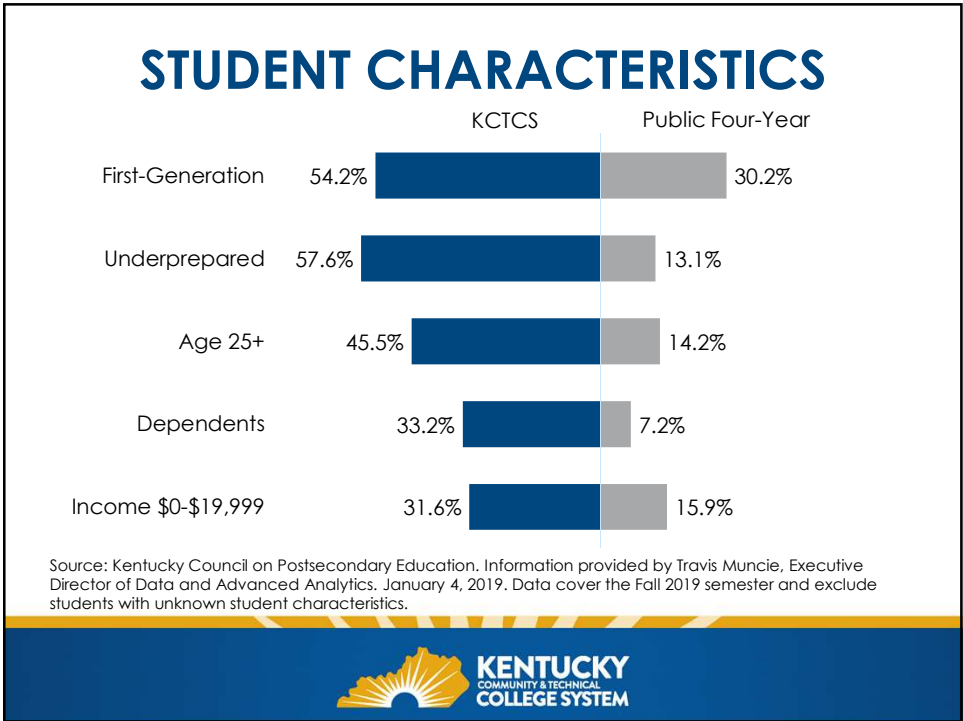
## WHO WE ARE

Our mission is to improve the quality of life and employability of Kentuckians by serving as the primary provider of college and workforce readiness, transfer education, and workforce education and training. (KRS 164.580)

- 115 Academic Programs (95% are Technical Programs)
- Open Access Institutions—a place for everyone, including those needing a GED, Dual Credit, College Credentials, Continuing Education







# KCTCS

Awards **98%** of all short-term certificates in Kentucky

Awards **66%** of Kentucky's nursing and other health program credentials

Partners with employers on apprenticeships and work and learn programs



## KCTCS CREDENTIALS

### Stackable Credential

Associate Degree

**Terminal Degree—skills plus general employability education courses/ may transfer to university**

Diploma

**Higher Level Skills Training**

Certificate

**Short-term specific groupings of skills in demand by employers**



## KCTCS.edu/ FindYourCareer

KCTCS recruits students via social media, web presence and searches, recruiters, and events such as OCTC's "Experience Nursing Day"

Find Your Career

FIND THE CAREER FOR YOU

If you have a career in mind, but you need some extra training, we're here to help. Select a career path below and explore the training options our colleges have to offer.

Help Me Choose



Advanced Manufacturing

Focus on production planning and control, maintenance and manufacturing, and process engineering.



Agriculture

Love the idea of working with crops, animals and resources that contribute to the worldwide food supply? Pursuing a career in agriculture will provide a rewarding and fulfilling future.



Business

Focus on organizing people, planning activities, working with numbers, and directing productive business operations.



Construction & Trades

Focus on designing, planning, managing, building and maintaining the built environment.



Health Sciences

Focus on providing therapeutic and diagnostic services, health informatics, support services, and biotechnology.



Information Technology

Focus on the design, development, support and management of hardware, software and systems integration services.




## WORK READY KENTUCKY SCHOLARSHIP

Industry Sector	2017-18			2018-19			2019-20		
	Number of Awardees	Dollars Awarded	Avg. Dollar Amount Awarded	Number of Awardees	Dollars Awarded	Avg. Dollar Amount Awarded	Number of Awardees	Dollars Awarded	Avg. Dollar Amount Awarded
Advanced Manufacturing	239	\$625,880	\$2,619	495	\$1,404,265	\$2,837	671	\$2,013,316	\$3,000
Business & IT Service	277	\$600,883	\$2,169	503	\$1,240,636	\$2,466	772	\$1,880,218	\$2,436
Construction	100	\$255,107	\$2,551	192	\$530,565	\$2,763	332	\$993,715	\$2,993
<b>Healthcare</b>	<b>256</b>	<b>\$554,383</b>	<b>\$2,166</b>	<b>632</b>	<b>\$1,327,224</b>	<b>\$2,100</b>	<b>1,082</b>	<b>\$2,177,421</b>	<b>\$2,012</b>
Transportation & Logistics	63	\$146,880	\$2,331	107	\$308,014	\$2,879	202	\$540,606	\$2,676
Undetermined	8	\$12,508	\$1,564	55	\$30,688	\$558	101	\$39,437	\$390
<b>KCTCS TOTAL</b>	<b>943</b>	<b>\$2,195,641</b>	<b>\$2,328</b>	<b>1,984</b>	<b>\$4,841,392</b>	<b>\$2,440</b>	<b>3,160</b>	<b>\$7,644,713</b>	<b>\$2,419</b>

Source: Official Type A file as reported to CPE. Sector or designations were determined by the most recent term in which a student was enrolled within that financial aid year.

Healthcare participation has gone from **256 awardees** in 2017-18 to **1,082 awardees** in 2019-2020

*Thanks to legislators for your continuing support of these scholarships*



## HEALTHCARE TRAINING FUNDS



KCTCS supports companies investing in their workforce by offsetting the cost of training up to 75% through legislatively directed KCTCS budget funds we call TRAINS funding

### For HEALTHCARE in 2020-2021

- Total TRAINS dollars invested against industry investment = **\$682,086**
- Total companies served through customized solutions = **73**
- Companies can call their **College's Workforce Solutions** for support

## WHAT WE OFFER

### Associate Degrees

Biomedical Technology Systems  
Biotechnology Laboratory Technician  
Dental Hygiene  
Diagnostic Medical Sonography  
Emergency Medical Services – Paramedic  
Health Information Technology  
Health Science Technology  
Healthcare Facilities Leadership  
Medical Assisting  
Medical Information Technology  
Medical Laboratory Technician  
Nursing (leads to Registered Nurse)  
Occupational Therapy Assistant  
Orthotics and Prosthetics Technology  
Physical Therapy Assistant  
Radiography  
Respiratory Therapist  
Surgical Assisting  
Surgical Technology



## WHAT WE OFFER

### Diplomas

Dental Assisting  
Medical Administrative Assistant  
Medical Records Specialist  
Pharmacy Technology  
Practical Nursing

### Certificates

Advanced Imaging in Radiography  
Advanced Nursing Assistant  
Electrocardiographic and Cardiac  
Monitoring Technician  
Electronic Health Records Specialist  
Emergency Medical Technician (EMT)  
EMS – Paramedic  
Kentucky Medication Aide  
Medicaid Nurse Aide  
Medical Interpreter  
Medical Office Insurance Billing and  
Coding  
Medical Transcriptionist  
Phlebotomist



## KCTCS GRADUATES



2020-21, KCTCS awarded 8,598 healthcare industry credentials to **6,886 graduates**



**ROI:** A recent CPE report on 2011 high school graduates found **median annual salaries** after 8 years of work:

- High school only = \$29,478
- Certificate/Diploma = **\$37,369**
- Associate's Degree = **\$38,368**
- Bachelor's Degree = \$41,915

### KENTUCKY'S TALENT PIPELINE: HEALTHCARE

**KENTUCKIANA WORKS**

- BAPTIST HEALTH
- Christian Care Communities
- HOSPARUS HEALTH
- MASONIC COMMUNITIES
- Signature Healthcare
- TRIOLOGY

**NORTHERN KENTUCKY**

- Children's Children's
- MERCY HEALTH
- St Elizabeth
- TriHealth
- Health

**TENCO**

- St. Joseph's Hospital
- HOSPITAL+HOFER
- St. Elizabeth
- St. Joseph's Hospital
- STERLING Health Solutions

**LINCOLN TRAIL**

- BAPTIST HEALTH
- KentuckyOne Health Elbert Memorial Hospital
- LANDMARK
- Leath

**WEST KENTUCKY**

- BAPTIST HEALTH
- ARcare
- LHHS LIVINGSTON HOSPITAL & HEALTHCARE SERVICES, INC.
- Marshall County Hospital
- MERCYHEALTH
- Stonycreek

**BLUEGRASS**

- BAPTIST HEALTH
- BAPTIST HEALTH
- BOURBON COMMUNITY HOSPITAL
- CHI Saint Joseph Health
- Clark Regional
- Frankfort Regional Medical Center
- Lexington Clinic
- TRIOLOGY

**KENTUCKY**  
COMMUNITY & TECHNICAL  
COLLEGE SYSTEM

### WORKFORCE BARRIERS IDENTIFIED THROUGH TPM HEALTHCARE PIPELINES

**Childcare Issues** 60%

**Transportation in rural areas** 60%

**Retention due to lower wages** 60%

**Food Security** 40%

**Lack of specialty training in rural areas** 40%

**Internet Bandwidth** 20%

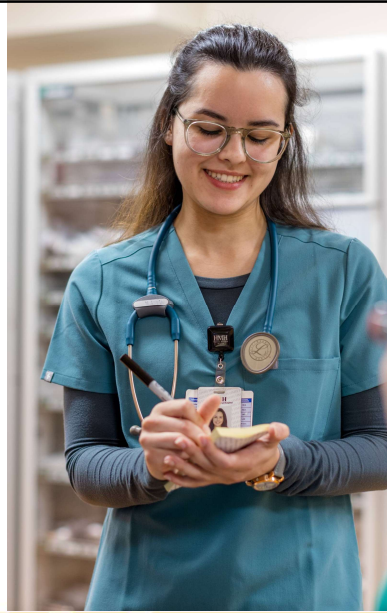
**Limited Clinical Rotation Sites** 60%

\*Percentage indicates weighting of TPM employer collaboratives focused on identified barriers

**KENTUCKY**  
COMMUNITY & TECHNICAL  
COLLEGE SYSTEM

## OTHER BARRIERS

- Inability for Colleges to Compete with Industry Salaries for Faculty
- Competition for Clinical Sites
- Lower Applicant Pool Numbers for Some Programs or Locations
- Student Concerns on Taking Algebra as a Pre-Requisite



## FLEXIBLE PROGRAM EXAMPLES

Apprenticeships for LPN, RN

Nursing Pathways

- Dual Credit
- Paramedic to RN
- SRNA to LPN to RN
- RN to BSN





## COMPETITIVE WORKFORCE

**Funding is needed to support:**

- Competitive Faculty Salaries
- Specialized Equipment & Simulators
- Wraparound Student Support Services
- Deferred Maintenance/ Asset Preservation
- Capital Projects

