



KENTUCKY JUDICIAL COMMISSION ON **MENTAL HEALTH**

Kentucky Court of Justice

KENTUCKY JUDICIAL COMMISSION ON MENTAL HEALTH



Mental Health and the Court System

- Serious mental illness (SMI) is 4 to 6 times higher in jail than in the general population.
- Roughly 1 in 7 men and 1 in 3 women in jail struggle with SMI.

General Population

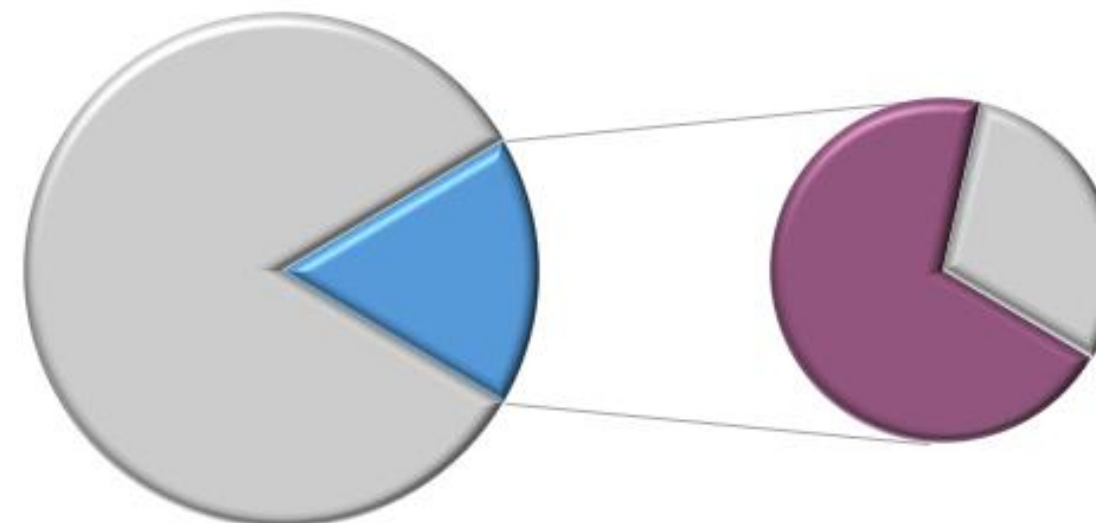
4% Serious Mental Illness



Jail Population

17% Serious Mental Illness

72% Co-Occurring Substance Use Disorder



Data provided by the Vera Institute of Justice and SAMHSA GAINS.



KENTUCKY JUDICIAL COMMISSION ON MENTAL HEALTH



Commission Overview

Established August of 2022, the commission's goals are to explore, recommend, and implement transformational changes to improve system wide responses to justice-involved individuals experiencing mental health, substance use, and/or intellectual disabilities.



KENTUCKY JUDICIAL COMMISSION ON MENTAL HEALTH



Commission Membership

- Supreme Court Order 2022-53
- 76 appointed members
- Wide representation of state and community leaders, including:
 - Judges, legislators, law enforcement, prosecutors, jailers, hospital representatives, private and nonprofit organizations, service providers, and faith-based organizations

KENTUCKY JUDICIAL COMMISSION ON MENTAL HEALTH



Commission Structure

Criminal Justice

- Juvenile Justice Workgroup
- Competency Workgroup
- Prearrest/Diversion Workgroup

Civil and Family Justice

- Dependency, Neglect and Abuse Workgroup
- Guardianship and Commitment Workgroup
- Domestic Violence Workgroup

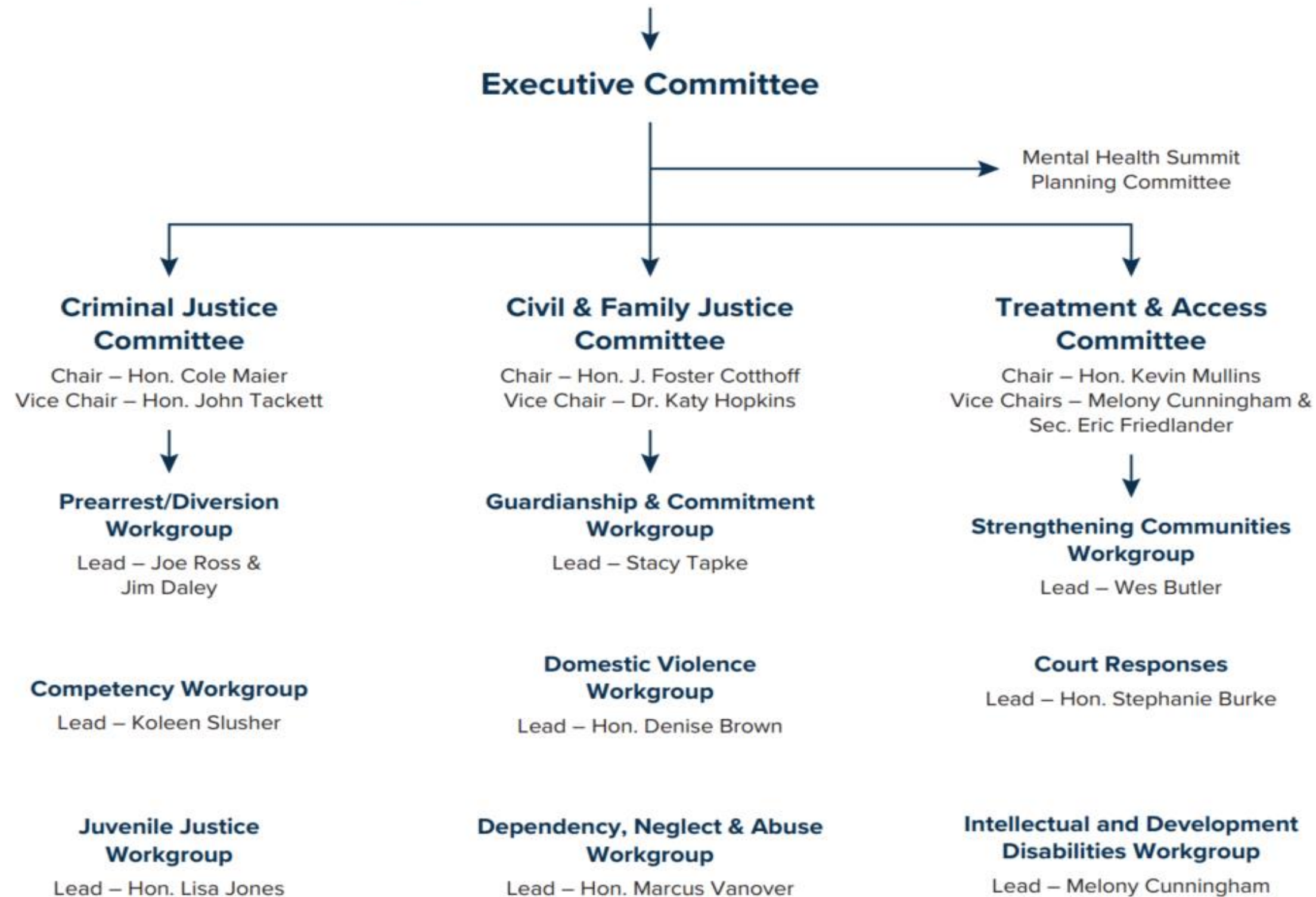
Treatment and Access

- Court Responses Workgroup
- Strengthening Community Response Workgroup
- Intellectual and Developmental Disabilities

KENTUCKY JUDICIAL COMMISSION ON MENTAL HEALTH



Kentucky Judicial Commission on Mental Health



KENTUCKY JUDICIAL COMMISSION ON MENTAL HEALTH



Sequential Intercept Model



INTERCEPT 4
Resources • prison to pipeline

- Halfway Housing^{RKC+} (Re-entry Service) centers
- KYAE (13 of 14 DOC facilities)
- 26 local provider networks
- Re-entry coordinators
- Re-entry employment coordinators
- Social Service clinicians (addiction)
- KYRAS (Risk Assessment System)
- Sex offender treatment programs
- Technology (tablets)/Phone App
- Existing relationships SPC (specialty courts)
- ID project
- Transportation pilot

Who is missing?
Jail services

INTERCEPT 4
Gaps and Opportunities

- Medication Facilitation
- Continuum of Care
- Educational Resource
- Expongement Clinics/community partners
- Technology
- Cross Agency connections + ideas - child welfare
- Those who served out, don't get case management
- Transition communication (facility reputation)
- Jail/Prison disconnection + consistency of services
- Cross system data sharing
- Non-felony assistance

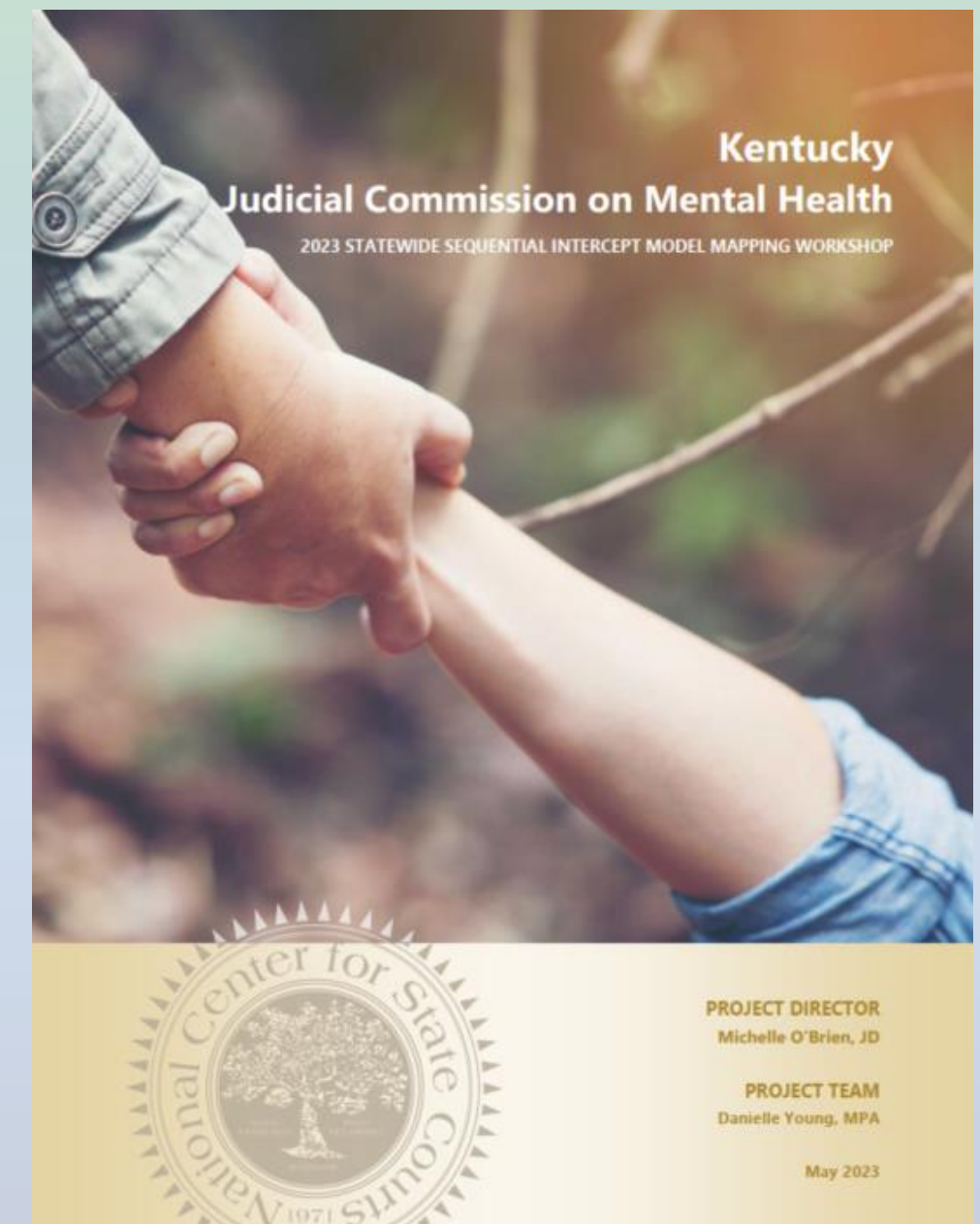


KENTUCKY JUDICIAL COMMISSION ON MENTAL HEALTH



Statewide SIM Mapping Event

- Courts as Conveners and Leaders
- Education and Training
- Data-Driven Decisions
- Behavioral Health Continuum of Care
- Peers, Individuals with Lived Experience, and Families



KENTUCKY JUDICIAL COMMISSION ON MENTAL HEALTH



Mental Health Summit

- May 31 - June 2, 2023
- 1000+ attendees from all 120 counties
- National and state experts
- Sessions incorporated the 11
State Courts Leading Change
recommendations



KENTUCKY JUDICIAL COMMISSION ON MENTAL HEALTH



"I was able to make connections with people who work in my county, that I would've otherwise never been able to make. These connections are sure to foster professional relationships that will promote growth and strength for the justice-involved individuals that we serve."



"I have learned to be less judgmental of the ones suffering with mental health issues. That there are many factors that are out of the person's control. I have gained compassion."



KENTUCKY JUDICIAL COMMISSION ON MENTAL HEALTH



DNA

Competency

IDD



KENTUCKY JUDICIAL COMMISSION ON MENTAL HEALTH



Town Hall Meetings



KENTUCKY JUDICIAL COMMISSION ON MENTAL HEALTH



Town Hall Meetings

We want to hear from you!

The Kentucky Judicial Commission on Mental Health is hosting town hall meetings across the state to address how the justice system handles cases involving people with mental illness, substance use disorder and/or intellectual and developmental disabilities. We want to hear directly from citizens and/or their families who have dealt with mental health issues, particularly if they were involved with the justice system. Additionally, we welcome school personnel, business owners, civic leaders and anyone else with an interest in mental health. Findings will be used to help guide the work of the commission and improve the state court system.

Meetings will take place from 6-8 p.m. local time.

Aug. 30	Owensboro	Owensboro Convention Center 501 W. 2nd St.
Sept. 6	Covington	Northern Kentucky Convention Center 1 W. Rivercenter Blvd.
Sept. 13	Ashland	Delta Marriott Downtown 1441 Winchester Ave.
Sept. 27	London	London Community Center 529 S Main St.
Oct. 11	Lexington	Central Bank Center 430 W. Vine St.
Oct. 25	Paducah	Paducah McCracken County Convention & Expo Center 415 Park Ave.
Nov. 8	Louisville	Kentucky International Convention Center 221 S. 4th St.
Nov. 15	Pikeville	Appalachian Wireless Arena 126 Main St.
Nov. 29	Bowling Green	Sloan Convention Center 1021 Wilkinson Trace

Can't attend a meeting or have accessibility and/or language needs for a meeting?
Email JCMH@kycourts.net. ASL interpreters will be on hand at every meeting.



WANT TO KNOW MORE?
SCAN THE QR CODE WITH YOUR PHONE OR USE THE SHORT LINK
kcoj.info/KJCMHtownhalls.

Remaining Events:

November 8 – Louisville
November 15 – Pikeville
November 29 – Bowling Green

KENTUCKY JUDICIAL COMMISSION ON **MENTAL HEALTH**



Legislative Recommendations

- Competency evaluations to stand trial
- Responsible parties authorized to make health care decisions

KENTUCKY JUDICIAL COMMISSION ON **MENTAL HEALTH**



Future Goals of the Commission

- Continued Statewide Efforts
- Regional Training
- Local Efforts
- Establishment of the Reentry Workgroup

KENTUCKY JUDICIAL COMMISSION ON **MENTAL HEALTH**



For more information:

Email JCMH@kycourts.net

Webpage kycourts.gov/kjcmh