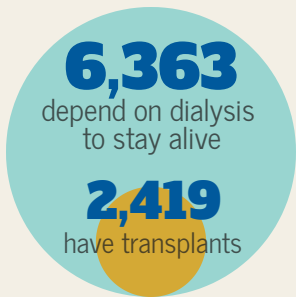


# Kidney failure (ESRD) in Kentucky

# 2020

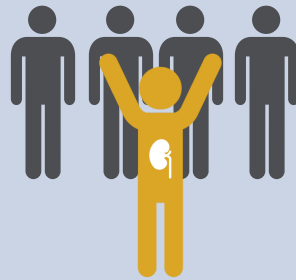
**8,782**  
**Kentucky residents**

are living with end-stage renal disease (ESRD, or kidney failure). Without treatment—dialysis or a transplant—ESRD is fatal.



SOURCE: U.S. Renal Data System 2019 Annual Data Report

Only about 1 in 5 Kentucky patients on the waiting list got a kidney transplant in 2019.



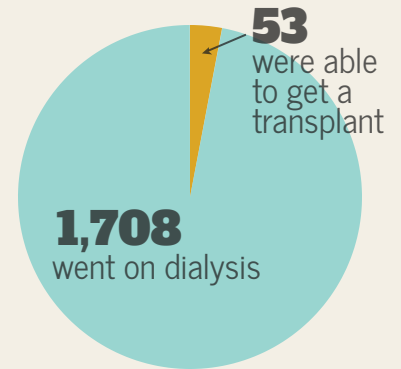
**748** are on the waiting list for a kidney transplant

**174** kidney transplants were performed in Kentucky in 2019

SOURCE: Organ Procurement and Transplantation Network

**1,761**

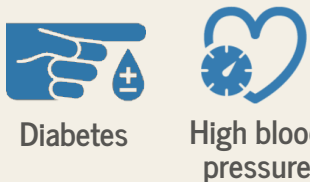
**New cases of kidney failure** were diagnosed in Kentucky in 2017 (the most recent data available).



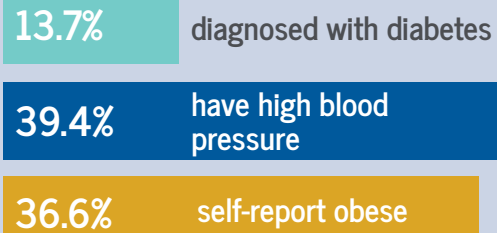
SOURCE: U.S. Renal Data System 2019 Annual Data Report

## Kentuckians are at risk for kidney disease

**Leading causes of kidney failure**



**KY AT RISK:**



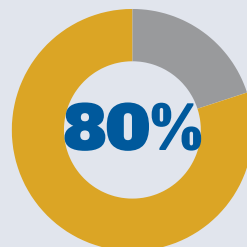
SOURCE: Centers for Disease Control and Prevention Behavioral Risk Factor Surveillance System

## Why ESRD patients depend on charitable assistance

**1,103** Kentucky residents on dialysis and with transplants received grants from AKF in 2019 to pay for their insurance premiums and other health care-related costs not covered by insurance.

**\$3.2 million** in charitable assistance from AKF ensured that low-income Kentucky dialysis and transplant patients could afford their lifesaving health care.

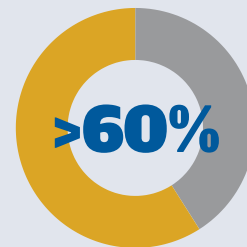
**Most dialysis patients too sick to work**



**ESRD IS A DISABILITY**

Dialysis is life support. Treating kidney failure and its comorbidities is more consuming than a full-time job: more than 80% of patients cannot work

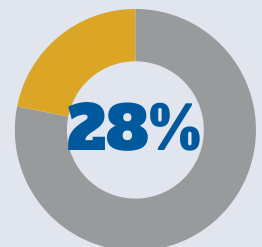
**Most patients AKF helps are minorities**



**MINORITIES ARE MORE AFFECTED BY ESRD**

Of the patients AKF helps, 34.7% are Black, 20.9% Hispanic/Latino, 5.2% Native American/Asian/Pacific Islander

**Ratio of out-of-pocket to income is stunning**



**FINANCIAL HARDSHIP COMES WITH ESRD**

Average income of patients AKF helps is < \$25,000, yet average out-of-pocket costs for dialysis patients is >\$7,000/yr

9th leading cause of death in the U.S.

# The facts about kidney disease

Kidneys are vital organs—just like the heart, lungs and liver. They clean the blood, help control blood pressure, help make red blood cells, and keep bones healthy.

- Chronic kidney disease is an increasingly common but usually preventable condition. **More than 37 million Americans have kidney disease** and millions more are at risk.
- According to the CDC, 96% of people with early kidney disease don't know they have it because it **usually has no symptoms until the late stages**. Simple blood and urine tests can tell how well the kidneys are working.
- Diabetes and high blood pressure are the **two leading causes of kidney disease**. Kidney disease can lead to heart attack, stroke, kidney failure and death.
- Kidney disease can be treated. If it's caught and treated early, it's often **possible to slow or stop the progress of kidney disease**.
- Besides diabetes and high blood pressure, other **common risks** for kidney disease include:
  - Having a **family history of kidney disease**
  - Being **Black, Asian American, Native American, or Hispanic**
  - Being **over 60**
- Black Americans are **nearly 4 times more likely than whites** to develop kidney failure, and Hispanics are **1.6 times more likely than non-Hispanics** to develop kidney failure.

Kidney disease is a silent killer



- There are more than **746,000 people with kidney failure** in the United States—an **increase of 91% since 2000**.
  - About 524,000 are on dialysis and nearly 223,000 are living with kidney transplants.
  - Each month, **about 10,000 new cases of kidney failure** are diagnosed.
- In 2017, Medicare spending for ESRD beneficiaries was **\$35.4 billion—7.2% of Medicare costs**—though **ESRD patients make up less than 1%** of the total Medicare population.
- A patient on hemodialysis costs Medicare **nearly \$91,000 per year**.
- For each kidney disease patient who does not reach kidney failure, **Medicare saves an estimated \$250,000**.
- **One third** of people who were diagnosed with kidney failure in 2017 received **little or no pre-ESRD care**.

Costly to patients, employers and taxpayers

