



February 7, 2024

RE: Water fluoridation

Dear Members of the General Assembly

Fluoridation is the process of adding fluoride to water. KRS 211.190 requires enforcement of water fluoridation by the public health department. 902 KAR 115:010 specifies the fluoride level to be maintained. During this legislative session, House Bill 141 decision to add fluoride in the hands of water producers' governing bodies. We urge you to support this initiative in the upcoming session.

We are dedicated to providing drinking water of the highest quality. Adding fluoride does nothing to improve water quality; however, it adds a significant safety hazard for our workers. On skin contact fluoride additive penetrates tissue very fast and can cause severe toxic systemic effects. Inhalation can cause pulmonary edema and life-threatening cardiac arrhythmia. Please review concentrated fluoride handling warnings provided by Solvay, a major fluoride additive manufacturer.

Many of our customers, your constituents, have expressed concern about fluoridation. The adverse effects of fluoridation may outweigh potential benefits. The mandate to add fluoride was originally passed in 1954. Since then, research has been published by The American Medical Association, Harvard School of Public Health, University of California San Francisco, NYU, and the Mt. Sinai School of Medicine connecting fluoride consumption with adverse health effects. These include neurotoxicity, renal system damage, thyroid dysfunction, bone disease, and tooth disease. Please review the attached resource list.

We urge your support of Representative Hart's effort to change fluoridation from a mandate to a choice. It is not the place of Utilities to medicate consumers.

Thank you for your support. Please contact us if we can provide additional information.

Respectfully submitted,

A handwritten signature in black ink that reads 'Stephen Whitaker'. The signature is written in a cursive, flowing style.

Stephen Whitaker
Superintendent / Manager
McCreary County Water District

**Research Published Since the Enactment of Mandated Fluoridation
Demonstrating Adverse Health Effects of Drinking Fluoride**

- Journal of the American Medical Association:

Association Between Maternal Fluoride Exposure During Pregnancy and IQ Scores in Offspring in Canada

doi:10.1001/jamapediatrics.2019.1729

- Harvard School of Public Health:

Is Fluoridated Drinking Water Safe?

https://www.hsph.harvard.edu/magazine/magazine_article/fluoridated-drinking-water/

- University of California:

Maternal and fetal exposures to fluoride during mid-gestation among pregnant women in northern California

<https://www.ncbi.nlm.nih.gov/pmc/articles/PMC7132865/>

- New York University School of Dentistry:

Study Reveals How Too Much Fluoride Causes Defects in Tooth Enamel

<https://stke.sciencemag.org/content/13/619/eaay0086>

<https://www.nyu.edu/about/news-publications/news/2020/february/fluorosis.html>

- Mount Sinai Hospital, New York

Fluoride exposure and kidney and liver function among adolescents in the United States: NHANES, 2013–2016

<https://am.dental-tribune.com/news/fluoride-may-negatively-affect-kidney-and-liver-function-in-adolescents/>

The US Department of Transportation requires that the following pictogram be prominently displayed on any container holding concentrated fluoride additive:



The following warnings are provided by Solvay Chemical, a major manufacturer of the concentrated fluoride additive:

IF INHALED: Remove person to fresh air and keep comfortable for breathing. Immediately call a POISON CENTER/doctor. IF IN EYES: Rinse cautiously with water for several minutes. Remove contact lenses, if present and easy to do. Continue rinsing. Immediately call a POISON CENTER/doctor.

HF exposures are unique. Serious and potentially life threatening effects can occur immediately or up to 24 hours after exposure. - Always decontaminate exposure victims before applying first aid or medical treatment. - Rescuers should wear PPE during rescue and decontamination of victims. –

In case of skin contact: Symptoms - Causes severe burns. - metabolic imbalances - Life threatening cardiac arrhythmia

Effects - HF penetrate very fast any tissue it comes in contact with, and do not remain on its surface. - Initially, the substances will be locally burning, and afterwards they will penetrate into deeper tissues and might cause the following significant complications: - In case of lower concentrations, symptoms can be delayed and might appear even 48h after the exposure. - It is completely absorbed into the body, where it causes acute and severe toxic systemic effects, mainly attributable to a rapid development of serum hypocalcaemia and hypomagnesaemia and to enzymes blocking.

In case of eye contact: Symptoms - Causes severe burns. – Blindness

See more at: https://www.solvay.us/en/binaries/P01-28861-USA_CN_EN-237517.pdf



February 7, 2024

Dear Members,

These pictures show the fluoride room and the effects fluoride has on the surrounding area. This room is dedicated to fluoride. Keep in mind that the equipment in this room has **NOT** come in direct contact with fluoride. The white discoloration on everything is etching and the result of vapor fumes from the opening of fluoride drums and transferring to the day tank. This etching of the equipment, doors, glass, and concrete comes from the fumes. The drums are vented to the outside while in use, however there is a time when the materials inside this room including the operators are exposed to the fumes when they must change drums.

Fluoride is very corrosive and harmful to the people that must use it in the water treatment plants and the people who drink it. If we did not feed fluoride in public water supplies, how would we dispose of it and what procedures would be required to do so? It does not make sense to continue to medicate consumers with such a harmful chemical when it has no water quality benefit and considering the science about how harmful it is. These pictures show what the fumes of fluoride can do. How about prolong consumption? The risk reward ratio is not in favor to continue to feed fluoride.

Sincerely,

Manger, Superintendent
McCreary County Water District

DANGER

CORROSIVE LIQUID
WEAR ACID GLOVES
AND GOGGLES

DANGER

CORROSIVE LIQUID
WEAR ACID GLOVES
AND GOGGLES









DA

DANGER

**CORROSIVE LIQUIDS
WEAR ACID GLOVES
AND GOGGLES**

MSDS: 1-800-455-6238 www.chemicals.com

11/11/11



WARNING
24 HR
SURVEILLANCE

ADULTS ONLY
No Alcohol or Drugs
No Smoking

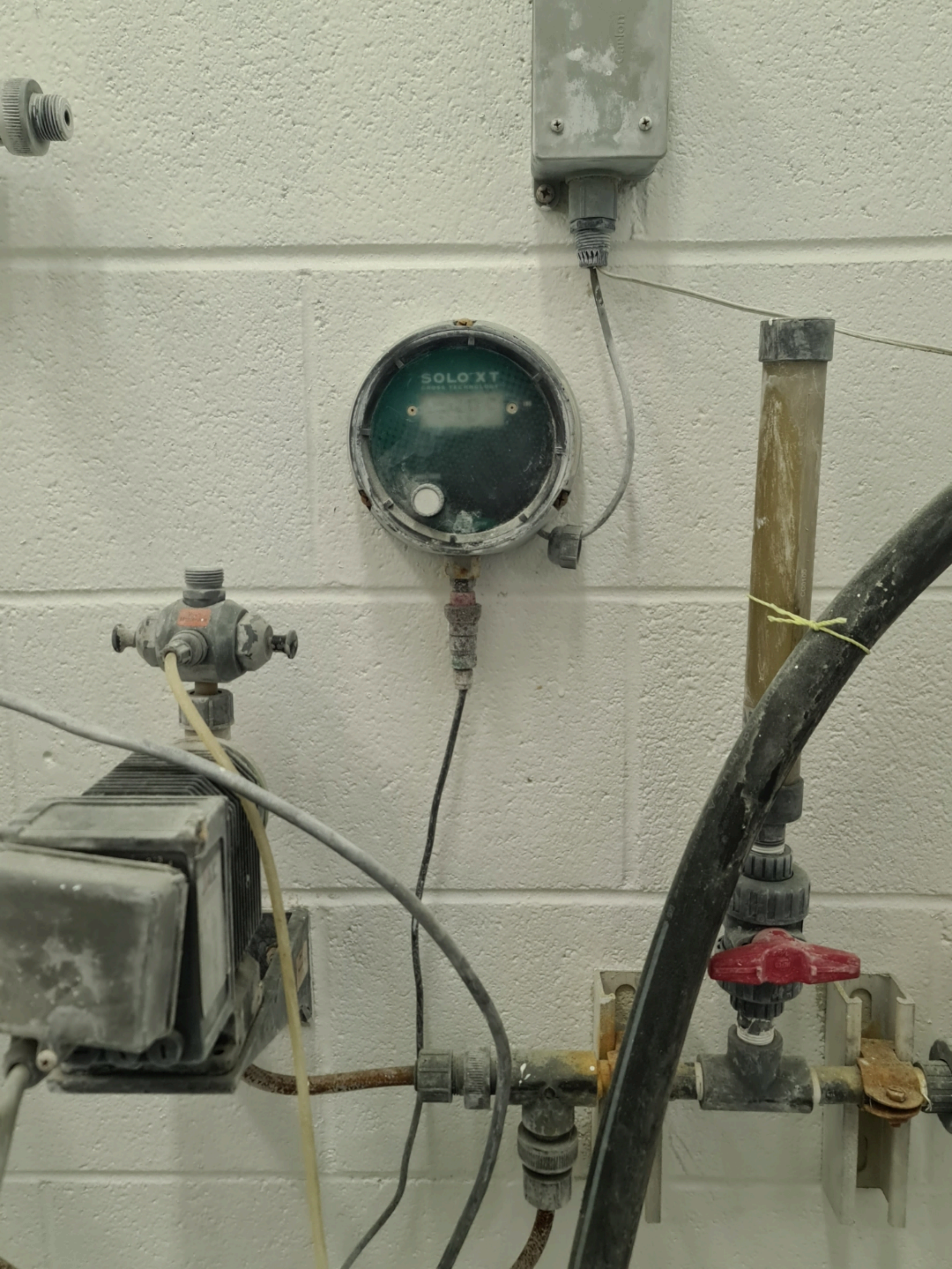
DANGER
CHLORINE GAS

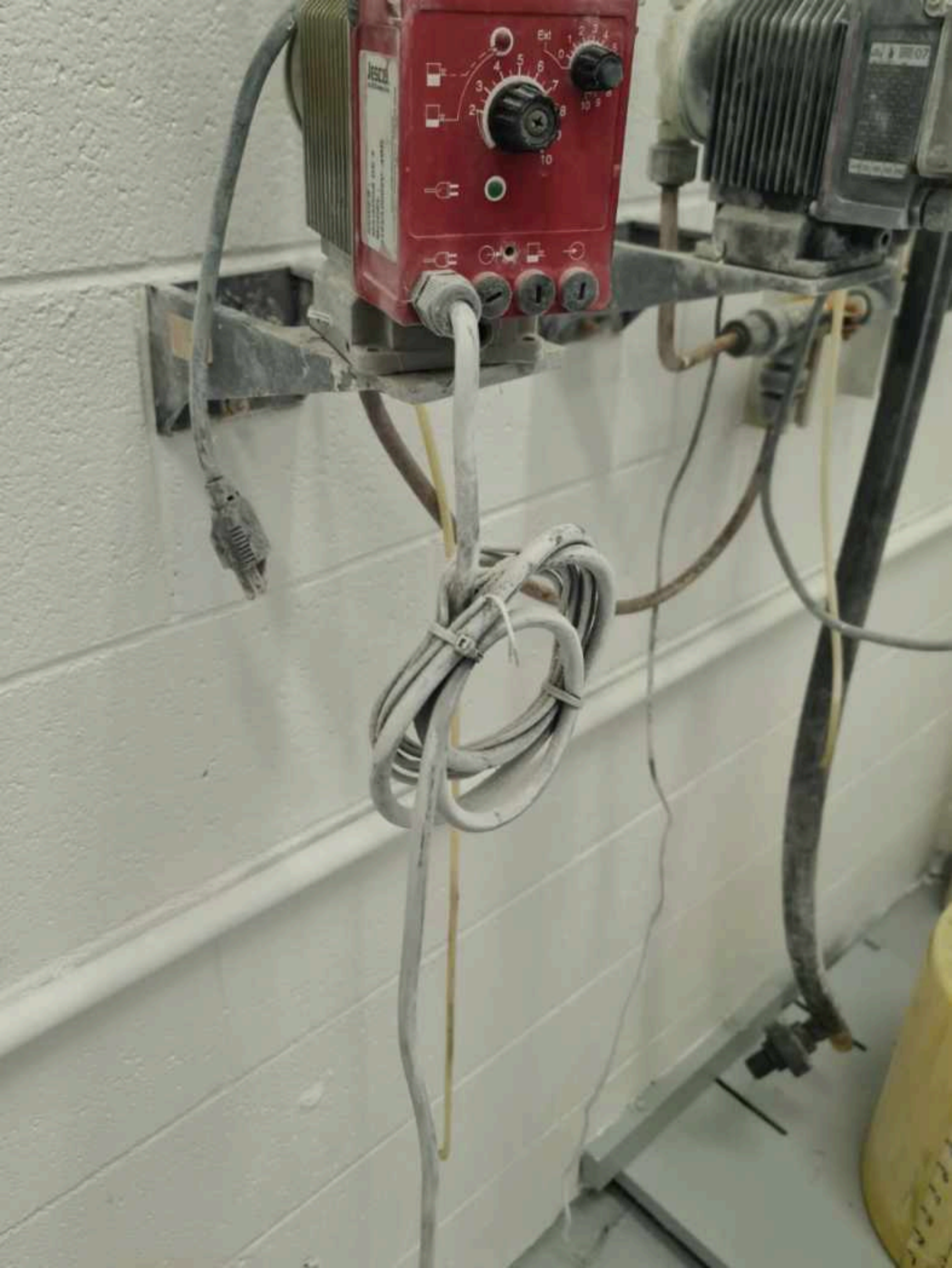


A photograph of a wet floor in a utility room. A blue line is drawn on the floor, starting from a drain and extending towards the left. A green corrugated hose is connected to a machine on the right. A white sign with red text is placed on the floor near the blue line. The floor is wet and reflective. A white bucket is visible on the left side of the frame.

WET
PAINT










FLUORIDE CONTROL
PUMPS

 *Control*



