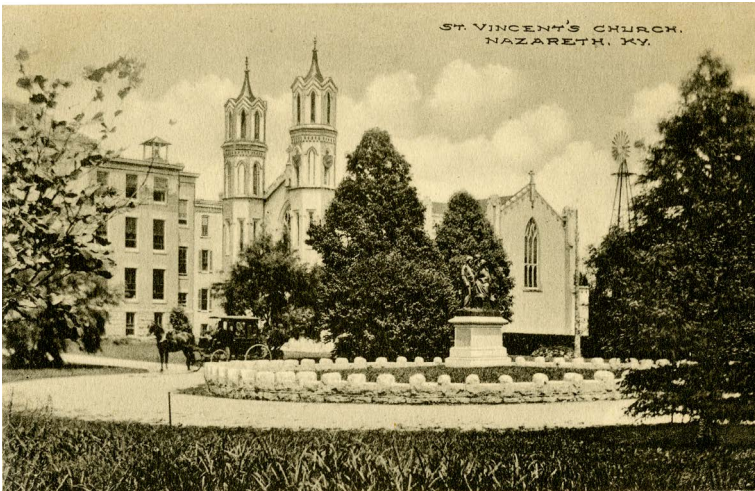


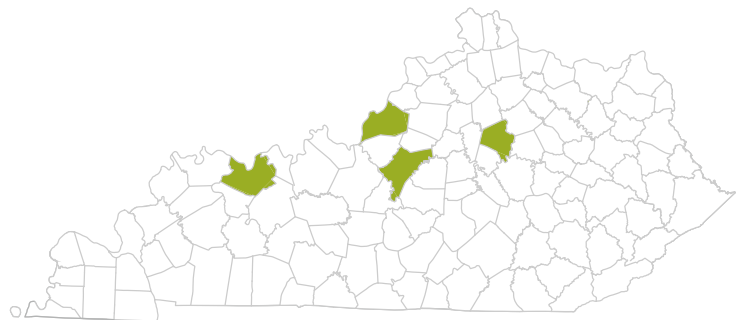
THE KentuckyHistoricalSociety PRESENTS

LEADERSHIP & LEGACY IN KENTUCKY HISTORY  
CATHERINE SPALDING | 1793-1858



*St. Vincent's Church is a visible example of Mother Catherine Spalding's legacy. (Graphic5\_Box14\_27 Ronald Morgan Kentucky Postcard Collection, Kentucky Historical Society)*

**SOCIAL WORK** – Rescuing orphans who were abandoned on the Louisville wharf was just part of Catherine Spalding's work. An orphanage, several schools and an infirmary for cholera victims were physical manifestations of her belief in helping people in need. The co-founder and the first leader of the Sisters of Charity of Nazareth in Nelson County, Spalding's leadership continues to make a difference through the work of modern-day members of the Sisters of Charity and the institutions that trace their start to her.



Nelson County, Jefferson County, Daviess County, Fayette County

KentuckyHistoricalSociety



100 W. Broadway | Frankfort, KY 40601 | 502-564-1792 | [www.history.ky.gov](http://www.history.ky.gov)

The Kentucky Historical Society is an agency of the Tourism, Arts and Heritage Cabinet.