



Presented by



100 W. Broadway, Frankfort KY

The Kentucky Historical Society (KHS) educates and engages the public through Kentucky's history in order to confront the challenges of the future.

KHS, an agency of the Tourism, Arts and Heritage Cabinet, is fully accredited by the American Alliance of Museums and is a Smithsonian affiliate.



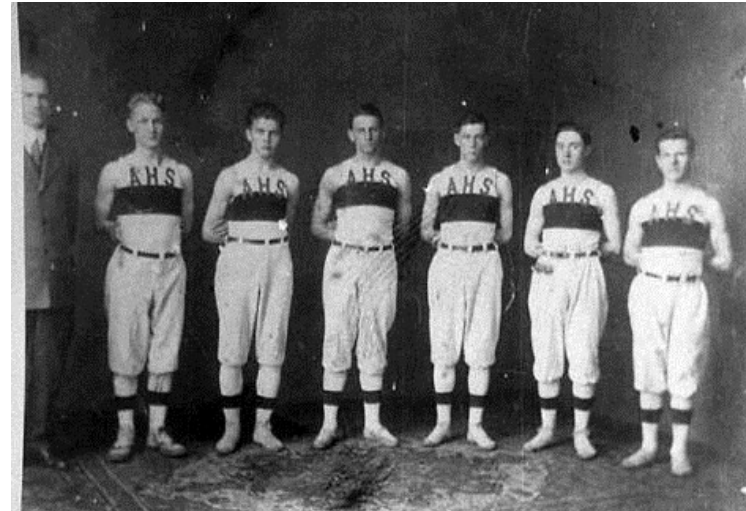
Have Team. Must Travel.



High schools often had to cross county and even state lines to find competition in the early days of Kentucky high school basketball.

“The Kentucky High School Basketball Encyclopedia” lists only nine boys’ teams for 1912, ranging in location from Ashland to Paducah and Covington to Monticello. Teams like Louisville High School had to find opponents across the Ohio River in Indiana.

As late as 1921, Ashland’s Paul Blazer High School reported to KHSAA that transportation issues made it easier to play teams in West Virginia and Ohio, and that its basketball team would not play more than two or three Kentucky teams.



Paul Blazer High School Tomcats in 1916. It was easier for teams, like the Tomcats, to play against high schools in neighboring states than to travel across Kentucky. (*Ohio River Portrait Project, Kentucky Historical Society.*)