

Kentucky's Airports Investing in the Future

Dan Mann, A.A.E.
Executive Director
Louisville Regional Airport Authority



Leading the Way Louisville Muhammad Ali International Airport

A Logistics Leader | UPS Worldport

3rd Busiest Cargo Airport in North
America and 5th in the World

Projected to be **No. 1** in North
America

Most Aircraft Traffic

SDF sees **180,000+** total aircraft
operations annually

Setting Records

SDF celebrated its best year yet in
2024 with **four of its Top 5** busiest
years yet since 2018



LOUISVILLE
MUHAMMAD ALI
INTERNATIONAL AIRPORT

A Centerpoint of Aviation Bowman Field

Leading the State

No. 1 Busiest General Aviation airport in the Commonwealth with 140,000+ annual operations

Life-Saving Transport Team

Norton Healthcare 'Just for Kids' helicopter **provides critical care**

Investing in Tomorrow

In recent years, substantial **airfield investments** were made including over \$6.5 million in pavement rehabilitation

Preparing Future Aviation Leaders

Various flight schools **train future pilots** and **aviation professionals**

Historical Significance

Longest, continuously operating general aviation airport





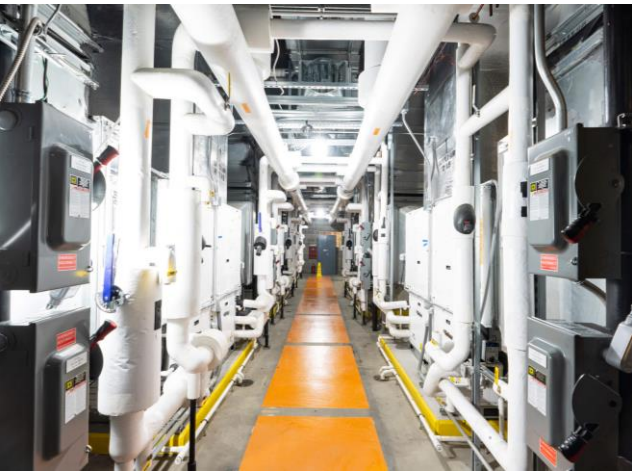
Powering the Regional Economy

\$12.8 Billion
in Economic Impact

\$551 Million
contributed to State and
Local Taxes

\$1 of every \$6
in Louisville Metro tax revenue
from Airport Operations

90,000 Jobs
1 in 8 jobs in Louisville Metro from
Airport Operations



SDF Next Program

Airfield and Terminal Completed Projects

\$338M invested



Kentucky Funding Support Leads to Strong ROI

SDF Security Checkpoint Expansion

Total Project Cost: \$45 million

\$5 million

KY House Bill 1 Investment

\$17.5 million

Federal Funding

\$22.5 million

LRAA Investment

Significant return on the state's investment



LOUISVILLE
MUHAMMAD ALI
INTERNATIONAL AIRPORT



Future Investment
SDF Airfield

\$180M

Expected Federal Grant Funding:
\$146.7 million

LRAA Responsibility:
\$33.3 million

Improvements for SDF to remain a
global cargo leader and
major economic engine in the
Commonwealth





Future Investment
SDF Terminal

\$542M

Expected Federal Grant Funding:
\$248.2 million

LRAA Responsibility:
\$293.8 million

Customer experience improvements to support continued **passenger growth** including a Federal Inspection Services (FIS) Facility for **international flights**

Thank You

Dan Mann, A.A.E.
Executive Director

Louisville Regional Airport Authority
(502) 363-8501 office | (502) 558-5967 cell
Dan.Mann@FlyLouisville.com

